

Converting Colors

XYZ(29.8922, 26.9853, 25.1059)

Have a look what the booklet for
XYZ(29.8922, 26.9853, 25.1059)
contains.

XYZ(29.8922, 26.9853, 25.1059)	3
<i>Conversions</i>	4
<i>Details</i>	6
<i>Harmonies</i>	12
<i>Previews</i>	24
<i>Color Blindness Simulation</i>	28
<i>CSS Examples</i>	31

Color

**XYZ(29.8922, 26.9853,
25.1059)**

Conversions

Conversions Part 1

Format	Color
Hex	AF8383
RGB	175, 131, 131
RGB Percent	69%, 51%, 51%
CMY	0.3137, 0.4863, 0.4863
CMYK	0.00, 0.25, 0.25, 0.31
HSL	0°, 22%, 60%
HSV	0°, 25%, 69%
XYZ	29.8922, 26.9853, 25.1059
YIQ	144.1560, 26.2240, 9.3280

Conversions

Conversions Part 2

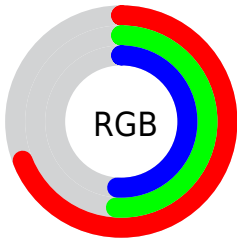
Format	Color
R_{YB}	175, 131, 131
Decimal	11502467
CIE _{Lab}	58.96, 16.92, 6.60
CIE _{LCh}	59, 18.160, 21.317
Yxy	26.9853, 0.3646, 0.3292
Android (android.graphics.Color)	4289692547 (0xFFAF8383)
YUV	144.1560, -6.4859, 27.0502
Hunter-Lab	51.9474, 11.8068, 7.7086

Details

The XYZ color **29.8922, 26.9853, 25.1059** is a dark color, and the websafe version is hex **CC9999**. A complement of this color would be **32.4273, 38.5790, 46.2948**, and the grayscale version is **26.5907, 27.9754, 30.4653**.

A 20% lighter version of the original color is **58.7472, 54.7306, 52.8151**, and **12.4915, 10.6316, 9.3764** is the 20% darker color. If you saturate the color by 10%, you get **26.6499, 22.2411, 18.6594**, and if you desaturate by 10%, it is **33.7333, 32.6060, 32.7410**.

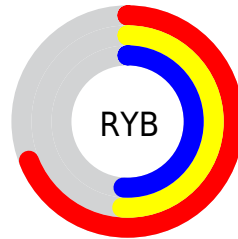
Distribution



Red (69%)

Green (51%)

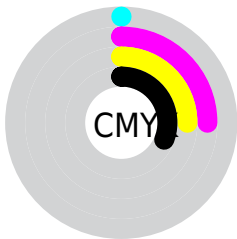
Blue (51%)



Red (69%)

Yellow (51%)

Blue (51%)

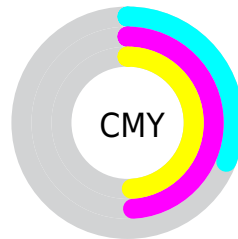


Cyan (0%)

Magenta (25%)

Yellow (25%)

Black (31%)



Cyan (31%)

Magenta (49%)

Yellow (49%)

Brightness & Saturation Gradients

These gradients show how the XYZ color 29.8922, 26.9853, 25.1059 changes by changing the brightness by 10 percent. The first figure shows a shift by +10% for each color and the second figure -10%.

Similar to the brightness gradients but the following saturation gradients show a change of the XYZ color 29.8922, 26.9853, 25.1059 by changing the saturation by 10% instead.

■ 29.8922, 26.9853,
25.1059

■ 29.8922, 26.9853,
25.1059

293.3205,
287.5859, 291.8295

■ 19.9044, 17.5622,
15.9362

■ 58.8795, 54.8603,
52.7952

■ 12.4335, 10.6361,
9.3252

■ 78.6097, 74.0809,
72.1520

■ 7.1139, 5.8227,
4.8542

■ 102.3181, 97.3362,
95.7415

■ 3.5804, 2.7376,
2.1047

130.3700,
125.0105, 123.9823

■ 1.4676, 0.9963,
0.6186

163.1309,
157.4883, 157.2929

■ 0.3036, 0.0000,
0.0000

200.9660,

■ 0.0000, 0.0000,

195.1538, 196.0920

0.0000

244.2408,
238.3916, 240.7980

■ 29.8922, 26.9853,
25.1059

■ 29.8922, 26.9853,
25.1059

■ 26.6499, 22.2411,
18.6594

■ 33.7333, 32.6060,
32.7410

■ 23.9741, 18.3257,
13.3402

■ 38.1987, 39.1402,
41.6184

■ 21.8331, 15.1927,
9.0840

■ 43.3155, 46.6274,
51.7906

■ 20.1909, 12.7895,
5.8195

■ 49.1083, 55.1037,
63.3067

■ 19.0071, 11.0573,
3.4665

■ 55.6003, 64.6032,
76.2131

■ 18.2354, 9.9280,
1.9325

■ 62.8138, 75.1585,
90.5540

■ 17.8182, 9.3174,
1.1034

■ 70.7702, 86.8007,
106.3717

■ 17.6794, 9.1143,
0.8274

■ 71.4892, 87.8540,
107.7974

Harmonies

Analogous

The Analogous color harmony consists of three colors that are next to each other on the color wheel.



30.1658, 26.9853, 31.2922



29.8922, 26.9853, 25.1059



28.4478, 26.9853, 20.7356

Triad

The Triadic color harmony groups three colors that are evenly spaced from another and form a triangle on the color wheel.



29.8922, 26.9853, 25.1059



22.4187, 26.9853, 22.3011



25.0014, 26.9853, 43.4056

Complementary

The Complementary color scheme is a pair of colors which are on the opposite of each other on the color wheel.



29.8922, 26.9853, 25.1059



32.4273, 38.5790, 46.2948

Split Complementary

Split-complementary colors differ from the complementary color scheme. The scheme consists of three colors, the original color and two neighbors of the complement color.



23.0396, 26.9853, 40.1502



29.8922, 26.9853, 25.1059



21.6067, 26.9853, 27.5520

Square

The Square scheme is like the rectangle color scheme, but the four colors are evenly spaced on the color wheel.



29.8922, 26.9853, 25.1059



24.1085, 26.9853, 19.2885



21.8271, 26.9853, 34.1189



27.2532, 26.9853, 42.4970

Rectangle

The Rectangle color scheme consists of four colors that form a rectangle on the color wheel.



29.8922, 26.9853, 25.1059



27.0592, 26.9853, 19.1418



21.8271, 26.9853, 34.1189



24.2882, 26.9853, 42.7465

Sweetspot

The Sweet Spot groups the original color and five complimentary colors.



29.8929, 26.9866, 25.1065



65.8963, 66.4167, 69.5346



33.5335, 28.4420, 44.2799



14.3772, 14.3682, 14.9200



84.5950, 89.0005, 96.9216



16.2198, 17.0645, 18.5832

Same Dimension

The Same Dimension uses a secret algorithm to generate beautiful new colors.



29.8929, 26.9866, 25.1065



50.2850, 43.5732, 38.4997



33.1673, 33.5353, 26.1979



8.0053, 8.0155, 8.3386



12.6608, 6.5271, 0.5926



0.3522, 0.1816, 0.0165

Inverse Universe

The Inverse Universe completely reimagines the original color for something new.



32.4273, 38.5790, 46.2948



55.5833, 67.8080, 82.7956



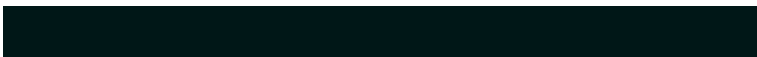
28.4894, 30.7031, 44.9822



8.2363, 9.0720, 10.2697



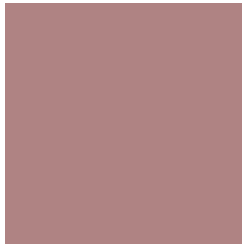
16.5175, 24.1689, 32.8390



0.4595, 0.6724, 0.9136

Previews

White Background



This preview shows how the XYZ color 29.8922, 26.9853, 25.1059 looks on a white background.

Color Contrast Check

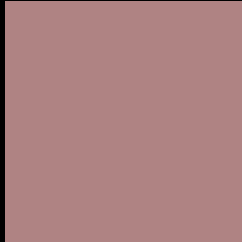
Large Text (above 18pt) WCAG AA ✓ Pass

Any Text WCAG AA ✗ Fail

Large Text (above 18pt) WCAG AAA ✗ Fail

Any Text WCAG AAA ✗ Fail

Black Background



This preview shows how the XYZ color 29.8922, 26.9853, 25.1059 looks on a black background.

Color Contrast Check

Large Text (above 18pt) WCAG AA ✓ Pass

Any Text WCAG AA ✓ Pass

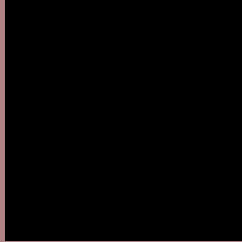
Large Text (above 18pt) WCAG AAA ✓ Pass

Any Text WCAG AAA × Fail

If you want to check with other color combinations, try the [Color Contrast Checker](#).

XYZ 29.8922, 26.9853, 25.1059

Background



This preview shows how black text looks on a background with the XYZ color 29.8922, 26.9853, 25.1059.



This preview shows how white text looks on a background with the XYZ color 29.8922, 26.9853,

Color Blindness Simulation

Color vision deficiency is a very complex topic, and I could not describe the different causes any better than Wikipedia does, so if you want to learn more, you should check out their [article about color blindness](#).

Dichromacy



Original Color

29.8922, 26.9853, 25.1059

Protanopia

26.0424, 27.2631, 27.5566

Deuteranopia

27.4721, 26.9766, 24.8782



Tritanopia

30.6208, 27.0888, 28.4257

Trichromacy



Original Color

29.8922, 26.9853, 25.1059

Protanomaly

27.3663, 27.0943, 26.7090

Deuteranomaly

28.2103, 26.9390, 24.8320

Tritanomaly

30.4025, 27.0015, 27.2763

Monochromacy



Original Color

29.8922, 26.9853, 25.1059

Achromatopsia

26.5089, 27.8894, 30.3716

Achromatomaly

27.4104, 27.2979, 28.2504

CSS Examples

Text

The CSS property to change the color of the text to XYZ 29.8922, 26.9853, 25.1059 is called "color". The color property can be set on classes, ids or directly on the HTML element.

This example shows how text in the color `rgb(175, 131, 131)` looks like.

```
.text, #text, p{  
    color:rgb(175, 131, 131)  
}
```

If you want to add a text shadow in that color use the text-shadow property, you can generate a text shadow directly with our [CSS Text Shadow Generator](#).

Here you see how black text with a 4 pixel rgb(175, 131, 131) colored shadow looks like.

```
.shadow{ text-shadow: 4px 4px 2px rgb(175, 131, 131) }
```

Border

The CSS property to change the border of an element to XYZ 29.8922, 26.9853, 25.1059 is called "border". The border property can be set on classes, ids or directly on the HTML element.

This example shows the color as border, it can be applied via the CSS property "border" or "border-color".

```
.border, #border, table{ border:4px solid rgb(175, 131, 131) }
```


If only the border color should be changed use the property `border-color`.

```
.border{ border-color:rgb(175, 131, 131) }
```

If you want to add a box shadow in that color use:

Here you see how a box with a 4 pixel `rgb(175, 131, 131)` colored shadow looks like.

```
.boxshadow{ -moz-box-shadow:4px 4px 4px  
4px rgb(175, 131, 131); -webkit-box-  
shadow:4px 4px 4px 4px rgb(175, 131, 131);  
box-shadow:4px 4px 4px 4px rgb(175, 131,  
131) }
```

Background

The CSS property to change the background color of an element to XYZ 29.8922, 26.9853, 25.1059 is called "background". The background property can be set on classes, ids or directly on the HTML element.

```
.background, #background, body{  
background: rgb(175, 131, 131) }
```

If only the background color should be changed can be used:

```
.background{ background-color: rgb(175,  
131, 131) }
```

This example shows the color as background, it is applied via the CSS property "background".

To optimize and compress your CSS code, you can use our [online CSS compressor and optimizer](#) based on csstidy. If you want to create a linear or radial gradient as background or border, check our [CSS Gradient Generator](#).

Hey! You found this booklet interesting? Support Converting Colors with the new Membership Option!

The pro membership hides all ads, plus gives you double the colors in the color bucket, and more awesome pro features!

[Learn more, Memberships starting at \\$2.50/m!](#)

**Follow me
on Twitter!**

@ConvertingColor