

Converting Colors

XYZ(29.9077, 27.9657, 27.5402)

Have a look what the booklet for
XYZ(29.9077, 27.9657, 27.5402)
contains.

XYZ(29.8971, 27.9605, 27.4881)	3
<i>Conversions</i>	4
<i>Details</i>	6
<i>Harmonies</i>	12
<i>Previews</i>	24
<i>Color Blindness Simulation</i>	28
<i>CSS Examples</i>	31

Color

**XYZ(29.8971, 27.9605,
27.4881)**

Conversions

Conversions Part 1

Format	Color
Hex	AA8889
RGB	170, 136, 137
RGB Percent	67%, 53%, 54%
CMY	0.3333, 0.4667, 0.4627
CMYK	0.00, 0.20, 0.19, 0.33
HSL	358°, 17%, 60%
HSV	358°, 20%, 67%
XYZ	29.8971, 27.9605, 27.4881
YIQ	146.2800, 19.9430, 7.5190

Conversions

Conversions Part 2

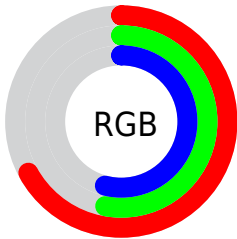
Format	Color
R_{YB}	170, 136, 137
Decimal	11176073
CIE _{Lab}	59.85, 13.09, 4.38
CIE _{LCh}	60, 13.803, 18.492
Yxy	27.9605, 0.3503, 0.3276
Android (android.graphics.Color)	4289366153 (0xFFAA8889)
YUV	146.2800, -4.5750, 20.8024
Hunter-Lab	52.8777, 8.3881, 6.1929

Details

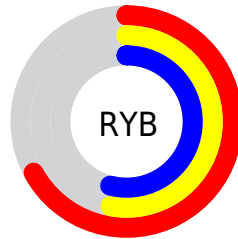
The XYZ color **29.8971, 27.9605, 27.4881** is a dark color, and the websafe version is hex **CC9999**. A complement of this color would be **31.6906, 36.8490, 42.9802**, and the grayscale version is **27.4496, 28.8791, 31.4493**.

A 20% lighter version of the original color is **58.8559, 56.2816, 56.4766**, and **12.3842, 11.1256, 10.5116** is the 20% darker color. If you saturate the color by 10%, you get **26.5956, 23.1090, 20.9874**, and if you desaturate by 10%, it is **33.7610, 33.6465, 35.0701**.

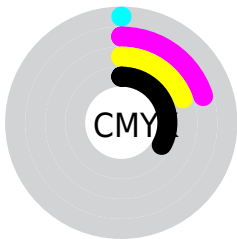
Distribution



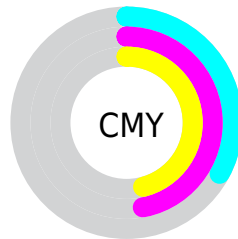
- Red (67%)
- Green (53%)
- Blue (54%)



- Red (67%)
- Yellow (53%)
- Blue (54%)



- Cyan (0%)
- Magenta (20%)
- Yellow (19%)
- Black (33%)



- Cyan (33%)
- Magenta (47%)
- Yellow (46%)

Brightness & Saturation Gradients

These gradients show how the XYZ color 29.8971, 27.9605, 27.4881 changes by changing the brightness by 10 percent. The first figure shows a shift by +10% for each color and the second figure -10%.

Similar to the brightness gradients but the following saturation gradients show a change of the XYZ color 29.8971, 27.9605, 27.4881 by changing the saturation by 10% instead.

■ 29.8971, 27.9605,
27.4881

■ 29.8971, 27.9605,
27.4881

293.3430,
292.2781, 303.8473

■ 19.9082, 18.2959,
17.7045

■ 58.8872, 56.4214,
56.6793

■ 12.4362, 11.1626,
10.5708

■ 78.6190, 75.9864,
76.9240

■ 7.1158, 6.1763,
5.6685

■ 102.3292, 99.6204,
101.4928

■ 3.5816, 2.9526,
2.5791

130.3831,
127.7077, 130.8043

■ 1.4683, 1.1070,
0.8816

163.1461,
160.6327, 165.2769

■ 0.3041, 0.0000,
0.0000

200.9835,

■ 0.0000, 0.0000,

198.7799, 205.3293

0.0000

244.2607,
242.5336, 251.3799

■ 29.8971, 27.9605,
27.4881

■ 29.8971, 27.9605,
27.4881

■ 26.5956, 23.1090,
20.9874

■ 33.7610, 33.6465,
35.0701

■ 23.8280, 19.0491,
15.5171

■ 38.2093, 40.1996,
43.7777

■ 21.5672, 15.7400,
11.0249

■ 43.2657, 47.6553,
53.6548

■ 19.7822, 13.1357,
7.4532

■ 48.9520, 56.0461,
64.7424

■ 18.4392, 11.1851,
4.7382

■ 55.2886, 65.4027,
77.0795

■ 17.4995, 9.8303,
2.8081

■ 62.2954, 75.7545,
90.7035

■ 16.9181, 9.0031,
1.5796

■ 69.9896, 87.1269,
105.6497

■ 16.6051, 8.5571,
0.9198

■ 70.3877, 87.2861,
107.7458

■ 16.6050, 8.5570,
0.9196

Harmonies

Analogous

The Analogous color harmony consists of three colors that are next to each other on the color wheel.



30.0120, 27.9605, 32.4081



29.8971, 27.9605, 27.4881



28.8692, 27.9605, 23.7812

Triad

The Triadic color harmony groups three colors that are evenly spaced from another and form a triangle on the color wheel.



29.8971, 27.9605, 27.4881



24.1340, 27.9605, 24.4924



25.9098, 27.9605, 40.9003

Complementary

The Complementary color scheme is a pair of colors which are on the opposite of each other on the color wheel.



29.8971, 27.9605, 27.4881



31.6906, 36.8490, 42.9802

Split Complementary

Split-complementary colors differ from the complementary color scheme. The scheme consists of three colors, the original color and two neighbors of the complement color.



24.4069, 27.9605, 38.2483



29.8971, 27.9605, 27.4881



23.4121, 27.9605, 28.5614

Square

The Square scheme is like the rectangle color scheme, but the four colors are evenly spaced on the color wheel.



29.8971, 27.9605, 27.4881



25.5223, 27.9605, 22.1871



23.5097, 27.9605, 33.6050



27.6575, 27.9605, 40.5314

Rectangle

The Rectangle color scheme consists of four colors that form a rectangle on the color wheel.



29.8971, 27.9605, 27.4881



27.8288, 27.9605, 22.3279



23.5097, 27.9605, 33.6050



25.3606, 27.9605, 40.3217

Sweetspot

The Sweet Spot groups the original color and five complimentary colors.



29.8979, 27.9618, 27.4887



64.2657, 65.4809, 69.5277



32.3942, 28.9321, 41.9076



14.2209, 14.4395, 15.2883



82.5889, 86.8899, 94.6231



15.4596, 16.2647, 17.7123

Same Dimension

The Same Dimension uses a secret algorithm to generate beautiful new colors.



29.8979, 27.9618, 27.4887



51.4646, 46.6441, 44.4040



32.2289, 32.7378, 27.9145



7.5397, 7.5457, 7.8932



12.2184, 6.2961, 0.6958



0.3000, 0.1543, 0.0311

Inverse Universe

The Inverse Universe completely reimagines the original color for something new.



29.8979, 27.9618, 27.4887



51.4646, 46.6441, 44.4040



28.9878, 31.2929, 42.5428



7.5397, 7.5457, 7.8932



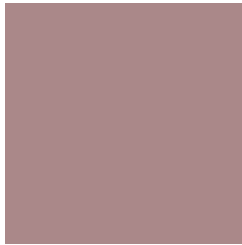
12.2184, 6.2961, 0.6958



0.3000, 0.1543, 0.0311

Previews

White Background



This preview shows how the XYZ color 29.8971, 27.9605, 27.4881 looks on a white background.

Color Contrast Check

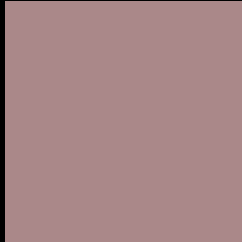
Large Text (above 18pt) WCAG AA ✓ Pass

Any Text WCAG AA ✗ Fail

Large Text (above 18pt) WCAG AAA ✗ Fail

Any Text WCAG AAA ✗ Fail

Black Background



This preview shows how the XYZ color 29.8971, 27.9605, 27.4881 looks on a black background.

Color Contrast Check

Large Text (above 18pt) WCAG AA ✓ Pass

Any Text WCAG AA ✓ Pass

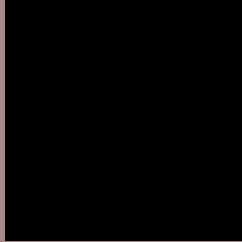
Large Text (above 18pt) WCAG AAA ✓ Pass

Any Text WCAG AAA × Fail

If you want to check with other color combinations, try the [Color Contrast Checker](#).

XYZ 29.8971, 27.9605, 27.4881

Background



This preview shows how black text looks on a background with the XYZ color 29.8971, 27.9605, 27.4881.



This preview shows how white text looks on a background with the XYZ color 29.8971, 27.9605,

Color Blindness Simulation

Color vision deficiency is a very complex topic, and I could not describe the different causes any better than Wikipedia does, so if you want to learn more, you should check out their [article about color blindness](#).

Dichromacy



Original Color

29.8971, 27.9605, 27.4881

Protanopia

26.9937, 28.1655, 29.2131

Deuteranopia

28.3745, 27.8199, 27.1668



Tritanopia

30.5694, 28.0302, 30.5873

Trichromacy



Original Color

29.8971, 27.9605, 27.4881

Protanomaly

27.9688, 28.0111, 28.7435

Deuteranomaly

28.8423, 27.8470, 27.1474

Tritanomaly

30.3410, 27.9389, 29.3848

Monochromacy



Original Color

29.8971, 27.9605, 27.4881

Achromatopsia

27.3213, 28.7441, 31.3023

Achromatomaly

28.1485, 28.2977, 29.9650

CSS Examples

Text

The CSS property to change the color of the text to XYZ 29.8971, 27.9605, 27.4881 is called "color". The color property can be set on classes, ids or directly on the HTML element.

This example shows how text in the color `rgb(170, 136, 137)` looks like.

```
.text, #text, p{  
    color:rgb(170, 136, 137)  
}
```

If you want to add a text shadow in that color use the text-shadow property, you can generate a text shadow directly with our [CSS Text Shadow Generator](#).

Here you see how black text with a 4 pixel rgb(170, 136, 137) colored shadow looks like.

```
.shadow{ text-shadow: 4px 4px 2px rgb(170, 136, 137) }
```

Border

The CSS property to change the border of an element to XYZ 29.8971, 27.9605, 27.4881 is called "border". The border property can be set on classes, ids or directly on the HTML element.

This example shows the color as border, it can be applied via the CSS property "border" or "border-color".

```
.border, #border, table{ border:4px solid rgb(170, 136, 137) }
```


If only the border color should be changed use the property `border-color`.

```
.border{ border-color:rgb(170, 136, 137) }
```

If you want to add a box shadow in that color use:

Here you see how a box with a 4 pixel `rgb(170, 136, 137)` colored shadow looks like.

```
.boxshadow{ -moz-box-shadow:4px 4px 4px  
4px rgb(170, 136, 137); -webkit-box-  
shadow:4px 4px 4px 4px rgb(170, 136, 137);  
box-shadow:4px 4px 4px 4px rgb(170, 136,  
137) }
```

Background

The CSS property to change the background color of an element to XYZ 29.8971, 27.9605, 27.4881 is called "background". The background property can be set on classes, ids or directly on the HTML element.

```
.background, #background, body{  
background: rgb(170, 136, 137) }
```

If only the background color should be changed can be used:

```
.background{ background-color: rgb(170,  
136, 137) }
```

This example shows the color as background, it is applied via the CSS property "background".

To optimize and compress your CSS code, you can use our [online CSS compressor and optimizer](#) based on csstidy. If you want to create a linear or radial gradient as background or border, check our [CSS Gradient Generator](#).

Hey! You found this booklet interesting? Support Converting Colors with the new Membership Option!

The pro membership hides all ads, plus gives you double the colors in the color bucket, and more awesome pro features!

[Learn more, Memberships starting at \\$2.50/m!](#)

**Follow me
on Twitter!**

@ConvertingColor