

# Converting Colors

XYZ(29.9950, 29.1547, 20.6725)

Have a look what the booklet for  
XYZ(29.9950, 29.1547, 20.6725)  
contains.

<b>XYZ(30.1328, 29.3094, 20.5921)</b> .....	3
<b><i>Conversions</i></b> .....	4
<b><i>Details</i></b> .....	6
<b><i>Harmonies</i></b> .....	12
<b><i>Previews</i></b> .....	24
<b><i>Color Blindness Simulation</i></b> .....	28
<b><i>CSS Examples</i></b> .....	31

# Color

**XYZ(30.1328, 29.3094,  
20.5921)**

# Conversions

## Conversions Part 1

<b>Format</b>	<b>Color</b>
Hex	AE8D74
RGB	174, 141, 116
RGB Percent	68%, 55%, 45%
CMY	0.3176, 0.4470, 0.5451
CMYK	0.00, 0.19, 0.33, 0.32
HSL	26°, 26%, 57%
HSV	26°, 33%, 68%
XYZ	30.1328, 29.3094, 20.5921
YIQ	148.0170, 27.6930, -0.7790

# Conversions

## Conversions Part 2

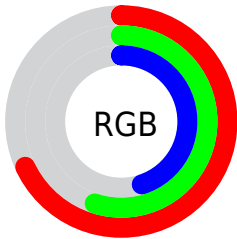
<b>Format</b>	<b>Color</b>
<b>RYB</b>	174, 160, 116
Decimal	11439476
CIELab	61.05, 8.81, 18.05
CIElCh	61, 20.084, 63.995
Yxy	29.3094, 0.3765, 0.3662
Android (android.graphics.Color)	4289629556 (0xFFAE8D74)
YUV	148.0170, -15.7844, 22.7871
Hunter-Lab	54.1382, 4.6097, 15.3450

# Details

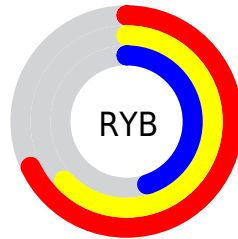
The XYZ color **30.1328, 29.3094, 20.5921** is a dark color, and the websafe version is hex **CC9999**. A complement of this color would be **25.5895, 28.2629, 44.1509**, and the grayscale version is **28.2117, 29.6809, 32.3225**.

A 20% lighter version of the original color is **59.2161, 58.6804, 45.2512**, and **12.5302, 11.8926, 7.1039** is the 20% darker color. If you saturate the color by 10%, you get **27.8192, 26.1530, 15.2865**, and if you desaturate by 10%, it is **32.7680, 32.8054, 26.9409**.

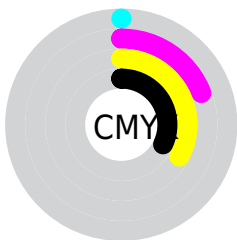
# Distribution



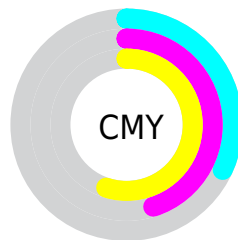
- Red (68%)
- Green (55%)
- Blue (45%)



- Red (68%)
- Yellow (63%)
- Blue (45%)



- Cyan (0%)
- Magenta (19%)
- Yellow (33%)
- Black (32%)




- Cyan (32%)
- Magenta (45%)
- Yellow (55%)


# Brightness & Saturation Gradients

These gradients show how the XYZ color 30.1328, 29.3094, 20.5921 changes by changing the brightness by 10 percent. The first figure shows a shift by +10% for each color and the second figure -10%.


Similar to the brightness gradients but the following saturation gradients show a change of the XYZ color 30.1328, 29.3094, 20.5921 by changing the saturation by 10% instead.




 30.1328, 29.3094,  
20.5921

 30.1328, 29.3094,  
20.5921

294.4217,  
298.6720, 267.8122

 20.0880, 19.3150,  
12.6378


 59.2573, 58.5683,  
45.2796

 12.5676, 11.8981,  
7.0519

 79.0677, 78.6016,  
62.8500

 7.2064, 6.6743,  
3.4156


 102.8640,  
102.7500, 84.4627

 3.6390, 3.2593,  
1.3106

131.0116,  
131.3978, 110.5365

 1.5000, 1.2685,  
0.0704

163.8758,  
164.9296, 141.4898

 0.3258, 0.1167,  
0.0000

201.8220,

 0.0000, 0.0000,

203.7296, 177.7411

0.0000

245.2155,  
248.1823, 219.7091

■ 30.1328, 29.3094,  
20.5921

■ 30.1328, 29.3094,  
20.5921

■ 27.8192, 26.1530,  
15.2865

■ 32.7680, 32.8054,  
26.9409

■ 25.8109, 23.3209,  
10.9652

■ 35.7357, 36.6472,  
34.3837

■ 24.0934, 20.8028,  
7.5664


■ 39.0487, 40.8463,  
42.9702


■ 22.6502, 18.5862,  
5.0201


■ 42.7187, 45.4121,  
52.7463


■ 21.4622, 16.6572,  
3.2464


■ 46.7568, 50.3538,  
63.7555


 20.5076, 15.0005,  
2.1497

 51.1735, 55.6801,  
76.0392

 19.9724, 14.0324,  
1.6559

 55.9787, 61.3996,  
89.6367

 61.1500, 67.5075,  
104.4150

 63.8285, 72.8645,  
105.3079

# Harmonies

## Analogous

The Analogous color harmony consists of three colors that are next to each other on the color wheel.



32.2613, 29.3094, 24.4852



30.1328, 29.3094, 20.5921



27.5071, 29.3094, 19.5425

# Triad

The Triadic color harmony groups three colors that are evenly spaced from another and form a triangle on the color wheel.



30.1328, 29.3094, 20.5921



23.1142, 29.3094, 32.9320



30.7800, 29.3094, 45.4798

# Complementary

The Complementary color scheme is a pair of colors which are on the opposite of each other on the color wheel.



30.1328, 29.3094, 20.5921



25.5895, 28.2629, 44.1509

# Split Complementary

Split-complementary colors differ from the complementary color scheme. The scheme consists of three colors, the original color and two neighbors of the complement color.



28.2113, 29.3094, 48.6384



30.1328, 29.3094, 20.5921



23.8742, 29.3094, 40.7088

# Square

The Square scheme is like the rectangle color scheme, but the four colors are evenly spaced on the color wheel.



30.1328, 29.3094, 20.5921



23.5580, 29.3094, 25.9783



25.7001, 29.3094, 46.7687



32.6511, 29.3094, 38.6888



# Rectangle

The Rectangle color scheme consists of four colors that form a rectangle on the color wheel.



30.1328, 29.3094, 20.5921



25.8527, 29.3094, 20.4323



25.7001, 29.3094, 46.7687



29.9638, 29.3094, 47.0461

# Sweetspot

The Sweet Spot groups the original color and five complimentary colors.



30.1336, 29.3108, 20.5927



66.6489, 68.8075, 67.0556



29.1927, 23.6864, 31.8173



14.6344, 15.0650, 14.4433



84.5950, 89.0005, 96.9216



16.2198, 17.0645, 18.5832



# Same Dimension

The Same Dimension uses a secret algorithm to generate beautiful new colors.



30.1336, 29.3108, 20.5927



51.5083, 48.8842, 30.0768



34.8270, 38.6976, 22.1572



8.2786, 8.5619, 8.4297



14.5429, 10.2913, 1.2199



0.4596, 0.3963, 0.0523



# Inverse Universe

The Inverse Universe completely reimagines the original color for something new.



25.5895, 28.2629, 44.1509



41.9828, 46.6790, 79.4341



21.6599, 20.4036, 42.8410



7.9428, 8.4849, 10.1718



8.8365, 8.8069, 30.2787

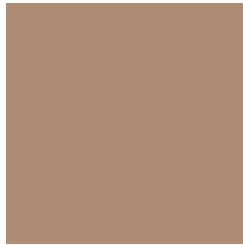


0.2988, 0.3509, 0.8600



# Previews

## White Background



This preview shows how the XYZ color 30.1328, 29.3094, 20.5921 looks on a white background.

## Color Contrast Check

Large Text (above 18pt) WCAG AA ✓ Pass

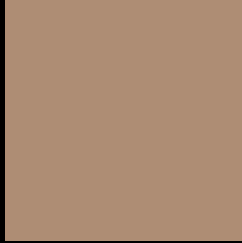
Any Text WCAG AA × Fail

Large Text (above 18pt) WCAG AAA × Fail

Any Text WCAG AAA × Fail



# Black Background



This preview shows how the XYZ color 30.1328, 29.3094, 20.5921 looks on a black background.

## Color Contrast Check

Large Text (above 18pt) WCAG AA ✓ Pass

Any Text WCAG AA ✓ Pass

Large Text (above 18pt) WCAG AAA ✓ Pass

Any Text WCAG AAA × Fail

If you want to check with other color combinations, try the [Color Contrast Checker](#).

**XYZ 30.1328, 29.3094, 20.5921**

## **Background**



This preview shows how black text looks on a background with the XYZ color 30.1328, 29.3094, 20.5921.



This preview shows how white text looks on a background with the XYZ color 30.1328, 29.3094,



# Color Blindness Simulation

Color vision deficiency is a very complex topic, and I could not describe the different causes any better than Wikipedia does, so if you want to learn more, you should check out their [article about color blindness](#).

## Dichromacy



### Original Color

30.1328, 29.3094, 20.5921

### Protanopia

27.6681, 29.3674, 21.6630

### Deuteranopia

29.8386, 29.3776, 20.6208



## Tritanopia

32.3436, 29.3450, 31.5632

# Trichromacy



## Original Color

30.1328, 29.3094, 20.5921

## Protanomaly

28.4997, 29.3453, 21.3017

## Deuteranomaly

30.0590, 29.4912, 20.6311

## Tritanomaly

31.4369, 29.1846, 27.2688

# Monochromacy



## Original Color

30.1328, 29.3094, 20.5921

## Achromatopsia

28.1479, 29.6138, 32.2495

## Achromatomaly

28.4740, 29.1965, 27.4273

# CSS Examples

## Text

The CSS property to change the color of the text to XYZ 30.1328, 29.3094, 20.5921 is called "color". The color property can be set on classes, ids or directly on the HTML element.

This example shows how text in the color `rgb(174, 141, 116)` looks like.

```
.text, #text, p{  
    color:rgb(174, 141, 116)  
}
```

If you want to add a text shadow in that color use the text-shadow property, you can generate a text shadow directly with our [CSS Text Shadow Generator](#).

Here you see how black text with a 4 pixel rgb(174, 141, 116) colored shadow looks like.

```
.shadow{ text-shadow: 4px 4px 2px rgb(174, 141, 116) }
```

## Border

The CSS property to change the border of an element to XYZ 30.1328, 29.3094, 20.5921 is called "border". The border property can be set on classes, ids or directly on the HTML element.

This example shows the color as border, it can be applied via the CSS property "border" or "border-color".

```
.border, #border, table{ border:4px solid rgb(174, 141, 116) }
```



If only the border color should be changed use the property border-color.

```
.border{ border-color:rgb(174, 141, 116) }
```

If you want to add a box shadow in that color use:

Here you see how a box with a 4 pixel rgb(174, 141, 116) colored shadow looks like.

```
.boxshadow{ -moz-box-shadow:4px 4px 4px  
4px rgb(174, 141, 116); -webkit-box-  
shadow:4px 4px 4px 4px rgb(174, 141, 116);  
box-shadow:4px 4px 4px 4px rgb(174, 141,  
116) }
```

# Background

The CSS property to change the background color of an element to XYZ 30.1328, 29.3094, 20.5921 is called "background". The background property can be set on classes, ids or directly on the HTML element.

```
.background, #background, body{  
background: rgb(174, 141, 116) }
```

If only the background color should be changed can be used:

```
.background{ background-color: rgb(174,  
141, 116) }
```

This example shows the color as background, it is applied via the CSS property "background".

To optimize and compress your CSS code, you can use our [online CSS compressor and optimizer](#) based on csstidy. If you want to create a linear or radial gradient as background or border, check our [CSS Gradient Generator](#).

Hey! You found this booklet interesting? Support Converting Colors with the new Membership Option!

The pro membership hides all ads, plus gives you double the colors in the color bucket, and more awesome pro features!

**[Learn more, Memberships starting at \\$2.50/m!](#)**

**Follow me  
on Twitter!**

@ConvertingColor