

Converting Colors

XYZ(30.0223, 29.5977, 21.3957)

Have a look what the booklet for
XYZ(30.0223, 29.5977, 21.3957)
contains.

XYZ(30.1057, 29.7236, 21.2900)	3
<i>Conversions</i>	4
<i>Details</i>	6
<i>Harmonies</i>	12
<i>Previews</i>	24
<i>Color Blindness Simulation</i>	28
<i>CSS Examples</i>	31

Color

**XYZ(30.1057, 29.7236,
21.2900)**

Conversions

Conversions Part 1

Format	Color
Hex	AC8F76
RGB	172, 143, 118
RGB Percent	67%, 56%, 46%
CMY	0.3255, 0.4392, 0.5373
CMYK	0.00, 0.17, 0.31, 0.33
HSL	28°, 25%, 57%
HSV	28°, 31%, 67%
XYZ	30.1057, 29.7236, 21.2900
YIQ	148.8210, 25.3090, -1.6270

Conversions

Conversions Part 2

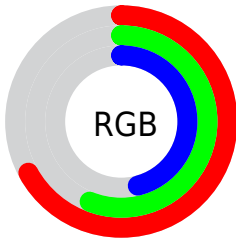
Format	Color
R _Y B	172, 165, 118
Decimal	11308918
CIE Lab	61.42, 7.15, 17.39
CIE LCh	61, 18.802, 67.661
Yxy	29.7236, 0.3711, 0.3664
Android (android.graphics.Color)	4289498998 (0xFFAC8F76)
YUV	148.8210, -15.1948, 20.3280
Hunter-Lab	54.5194, 3.1592, 15.0106

Details

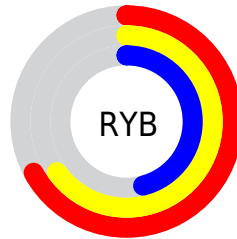
The XYZ color **30.1057, 29.7236, 21.2900** is a dark color, and the websafe version is hex **CC9999**. A complement of this color would be **25.3509, 27.6965, 43.0395**, and the grayscale version is **28.5468, 30.0335, 32.7065**.

A 20% lighter version of the original color is **59.2169, 59.3288, 46.3607**, and **12.6276, 12.1928, 7.4823** is the 20% darker color. If you saturate the color by 10%, you get **27.8456, 26.6927, 15.9455**, and if you desaturate by 10%, it is **32.6679, 33.0602, 27.6555**.

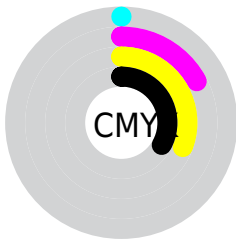
Distribution



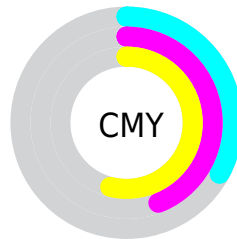
- Red (67%)
- Green (56%)
- Blue (46%)



- Red (67%)
- Yellow (65%)
- Blue (46%)



- Cyan (0%)
- Magenta (17%)
- Yellow (31%)
- Black (33%)



- Cyan (33%)
- Magenta (44%)
- Yellow (54%)

Brightness & Saturation Gradients

These gradients show how the XYZ color 30.1057, 29.7236, 21.2900 changes by changing the brightness by 10 percent. The first figure shows a shift by +10% for each color and the second figure -10%.

Similar to the brightness gradients but the following saturation gradients show a change of the XYZ color 30.1057, 29.7236, 21.2900 by changing the saturation by 10% instead.

■ 30.1057, 29.7236,
21.2900

■ 30.1057, 29.7236,
21.2900

294.2978,
300.6140, 271.6472

■ 20.0673, 19.6289,
13.1428

■ 59.2148, 59.2248,
46.4567

■ 12.5525, 12.1256,
7.3951

■ 79.0162, 79.4001,
64.3134

■ 7.1960, 6.8293,
3.6282

■ 102.8026,
103.7043, 86.2436

■ 3.6324, 3.3555,
1.4237

130.9394,
132.5219, 112.6659

■ 1.4963, 1.3201,
0.1601

163.7920,
166.2373, 143.9989

■ 0.3233, 0.1566,
0.0000

201.7257,

■ 0.0000, 0.0000,

205.2348, 180.6611

0.0000

245.1059,
249.8989, 223.0710

■ 30.1057, 29.7236,
21.2900

■ 30.1057, 29.7236,
21.2900

■ 27.8456, 26.6927,
15.9455

■ 32.6679, 33.0602,
27.6555

■ 25.8725, 23.9538,
11.5657

■ 35.5419, 36.7073,
35.0903

■ 24.1732, 21.4981,
8.0920

■ 38.7398, 40.6749,
43.6419

■ 22.7323, 19.3149,
5.4581

■ 42.2723, 44.9714,
53.3545

■ 21.5326, 17.3922,
3.5887

■ 46.1495, 49.6045,
64.2697

■ 20.5542, 15.7169,
2.3949

■ 50.3812, 54.5819,
76.4272

■ 19.8558, 14.4557,
1.7437

■ 54.9767, 59.9109,
89.8646

■ 59.8479, 65.5600,
104.1078

■ 62.2940, 70.4521,
104.9231

Harmonies

Analogous

The Analogous color harmony consists of three colors that are next to each other on the color wheel.



32.2031, 29.7236, 24.7060



30.1057, 29.7236, 21.2900



27.6195, 29.7236, 20.6133

Triad

The Triadic color harmony groups three colors that are evenly spaced from another and form a triangle on the color wheel.



30.1057, 29.7236, 21.2900



23.7777, 29.7236, 34.2217



31.2709, 29.7236, 44.4436

Complementary

The Complementary color scheme is a pair of colors which are on the opposite of each other on the color wheel.



30.1057, 29.7236, 21.2900



25.3509, 27.6965, 43.0395

Split Complementary

Split-complementary colors differ from the complementary color scheme. The scheme consists of three colors, the original color and two neighbors of the complement color.



28.8928, 29.7236, 47.8995



30.1057, 29.7236, 21.2900



24.6369, 29.7236, 41.4604

Square

The Square scheme is like the rectangle color scheme, but the four colors are evenly spaced on the color wheel.



30.1057, 29.7236, 21.2900



24.0604, 29.7236, 27.4388



26.4748, 29.7236, 46.7346



32.9029, 29.7236, 37.8457

Rectangle

The Rectangle color scheme consists of four colors that form a rectangle on the color wheel.



30.1057, 29.7236, 21.2900



26.0918, 29.7236, 21.6986



26.4748, 29.7236, 46.7346



30.5269, 29.7236, 46.0522

Sweetspot

The Sweet Spot groups the original color and five complimentary colors.



30.1065, 29.7250, 21.2906



65.7224, 68.1492, 66.9453



28.8134, 23.8564, 30.9789



14.1111, 14.5955, 14.0941



82.5889, 86.8899, 94.6231



15.4596, 16.2647, 17.7123

Same Dimension

The Same Dimension uses a secret algorithm to generate beautiful new colors.



30.1065, 29.7250, 21.2906



51.5766, 49.8640, 31.3815



34.5272, 38.5664, 22.7642



8.2994, 8.6036, 8.4366



14.8298, 10.8652, 1.3156



0.4676, 0.4124, 0.0550

Inverse Universe

The Inverse Universe completely reimagines the original color for something new.



25.3509, 27.6965, 43.0395



41.5091, 45.5663, 77.4132



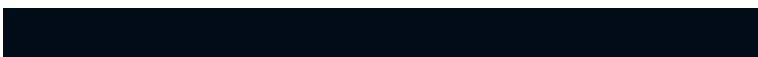
21.7189, 20.4324, 41.8288



7.9217, 8.4427, 10.1648



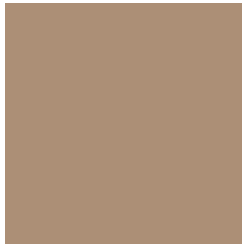
8.4679, 8.0697, 30.1558



0.2896, 0.3325, 0.8569

Previews

White Background



This preview shows how the XYZ color 30.1057, 29.7236, 21.2900 looks on a white background.

Color Contrast Check

Large Text (above 18pt) WCAG AA ✓ Pass

Any Text WCAG AA × Fail

Large Text (above 18pt) WCAG AAA × Fail

Any Text WCAG AAA × Fail

Black Background



This preview shows how the XYZ color 30.1057, 29.7236, 21.2900 looks on a black background.

Color Contrast Check

Large Text (above 18pt) WCAG AA ✓ Pass

Any Text WCAG AA ✓ Pass

Large Text (above 18pt) WCAG AAA ✓ Pass

Any Text WCAG AAA × Fail

If you want to check with other color combinations, try the [Color Contrast Checker](#).

XYZ 30.1057, 29.7236, 21.2900

Background



This preview shows how black text looks on a background with the XYZ color 30.1057, 29.7236, 21.2900.



This preview shows how white text looks on a background with the XYZ color 30.1057, 29.7236,

21.2900.

Color Blindness Simulation

Color vision deficiency is a very complex topic, and I could not describe the different causes any better than Wikipedia does, so if you want to learn more, you should check out their [article about color blindness](#).

Dichromacy



Original Color

30.1057, 29.7236, 21.2900

Protanopia

27.8847, 29.7040, 22.0331

Deuteranopia

30.3261, 29.8372, 21.3003



Tritanopia

32.3366, 29.7491, 32.4716

Trichromacy



Original Color

30.1057, 29.7236, 21.2900

Protanomaly

28.5089, 29.5711, 21.6580

Deuteranomaly

30.3261, 29.8372, 21.3003

Tritanomaly

31.4211, 29.5898, 28.1001

Monochromacy



Original Color

30.1057, 29.7236, 21.2900

Achromatopsia

28.5667, 30.0544, 32.7292

Achromatomaly

28.9258, 29.8705, 28.2858

CSS Examples

Text

The CSS property to change the color of the text to XYZ 30.1057, 29.7236, 21.2900 is called "color". The color property can be set on classes, ids or directly on the HTML element.

This example shows how text in the color `rgb(172, 143, 118)` looks like.

```
.text, #text, p{  
    color:rgb(172, 143, 118)  
}
```

If you want to add a text shadow in that color use the text-shadow property, you can generate a text shadow directly with our [CSS Text Shadow Generator](#).

Here you see how black text with a 4 pixel rgb(172, 143, 118) colored shadow looks like.

```
.shadow{ text-shadow: 4px 4px 2px rgb(172, 143, 118) }
```

Border

The CSS property to change the border of an element to XYZ 30.1057, 29.7236, 21.2900 is called "border". The border property can be set on classes, ids or directly on the HTML element.

This example shows the color as border, it can be applied via the CSS property "border" or "border-color".

```
.border, #border, table{ border:4px solid rgb(172, 143, 118) }
```


If only the border color should be changed use the property `border-color`.

```
.border{ border-color:rgb(172, 143, 118) }
```

If you want to add a box shadow in that color use:

Here you see how a box with a 4 pixel `rgb(172, 143, 118)` colored shadow looks like.

```
.boxshadow{ -moz-box-shadow:4px 4px 4px  
4px rgb(172, 143, 118); -webkit-box-  
shadow:4px 4px 4px 4px rgb(172, 143, 118);  
box-shadow:4px 4px 4px 4px rgb(172, 143,  
118) }
```

Background

The CSS property to change the background color of an element to XYZ 30.1057, 29.7236, 21.2900 is called "background". The background property can be set on classes, ids or directly on the HTML element.

```
.background, #background, body{  
background: rgb(172, 143, 118) }
```

If only the background color should be changed can be used:

```
.background{ background-color: rgb(172,  
143, 118) }
```

This example shows the color as background, it is applied via the CSS property "background".

To optimize and compress your CSS code, you can use our [online CSS compressor and optimizer](#) based on csstidy. If you want to create a linear or radial gradient as background or border, check our [CSS Gradient Generator](#).

Hey! You found this booklet interesting? Support Converting Colors with the new Membership Option!

The pro membership hides all ads, plus gives you double the colors in the color bucket, and more awesome pro features!

[Learn more, Memberships starting at \\$2.50/m!](#)

**Follow me
on Twitter!**

@ConvertingColor