

# Converting Colors

XYZ(30.0913, 25.9717, 22.8291)

Have a look what the booklet for  
XYZ(30.0913, 25.9717, 22.8291)  
contains.

<b>XYZ(30.0913, 25.9717, 22.8291)</b> .....	3
<b><i>Conversions</i></b> .....	4
<b><i>Details</i></b> .....	6
<b><i>Harmonies</i></b> .....	12
<b><i>Previews</i></b> .....	24
<b><i>Color Blindness Simulation</i></b> .....	28
<b><i>CSS Examples</i></b> .....	31

# Color

**XYZ(30.0913, 25.9717,  
22.8291)**

# Conversions

## Conversions Part 1

Format	Color
Hex	B57D7D
RGB	181, 125, 125
RGB Percent	71%, 49%, 49%
CMY	0.2902, 0.5098, 0.5098
CMYK	0.00, 0.31, 0.31, 0.29
HSL	0°, 27%, 60%
HSV	0°, 31%, 71%
XYZ	30.0913, 25.9717, 22.8291
YIQ	141.7440, 33.3760, 11.8720

# Conversions

## Conversions Part 2

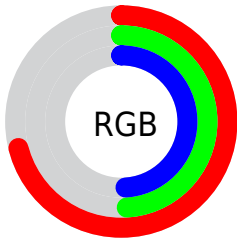
<b>Format</b>	<b>Color</b>
<b>R<sub>YB</sub></b>	181, 125, 125
Decimal	11894141
CIE <sub>Lab</sub>	58.01, 21.77, 8.79
CIE <sub>LCh</sub>	58, 23.475, 21.985
Yxy	25.9717, 0.3814, 0.3292
Android (android.graphics.Color)	4290084221 (0xFFB57D7D)
YUV	141.7440, -8.2548, 34.4275
Hunter-Lab	50.9624, 16.2129, 9.1142

# Details

The XYZ color **30.0913, 25.9717, 22.8291** is a dark color, and the websafe version is hex **996666**. A complement of this color would be **33.3211, 40.7422, 49.8238**, and the grayscale version is **25.6330, 26.9679, 29.3680**.

A 20% lighter version of the original color is **59.2162, 53.2323, 49.2733**, and **12.5730, 10.0660, 8.1177** is the 20% darker color. If you saturate the color by 10%, you get **26.9526, 21.3791, 16.5886**, and if you desaturate by 10%, it is **33.8596, 31.4860, 30.3195**.

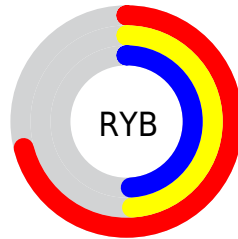
# Distribution



Red (71%)

Green (49%)

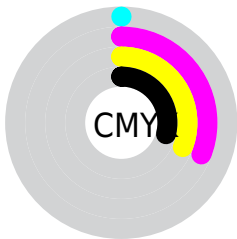
Blue (49%)



Red (71%)

Yellow (49%)

Blue (49%)

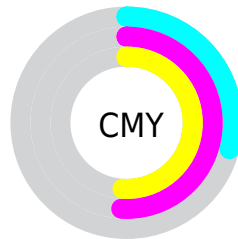


Cyan (0%)

Magenta (31%)

Yellow (31%)

Black (29%)



Cyan (29%)

Magenta (51%)


Yellow (51%)


# Brightness & Saturation Gradients

These gradients show how the XYZ color 30.0913, 25.9717, 22.8291 changes by changing the brightness by 10 percent. The first figure shows a shift by +10% for each color and the second figure -10%.


Similar to the brightness gradients but the following saturation gradients show a change of the XYZ color 30.0913, 25.9717, 22.8291 by changing the saturation by 10% instead.





 30.0913, 25.9717,  
22.8291


 30.0913, 25.9717,  
22.8291


294.2320,  
282.6431, 279.9394


 20.0563, 16.8025,  
14.2633


 59.1922, 53.2293,  
49.0322

 12.5445, 10.0938,  
8.1632


 78.9888, 72.0864,  
67.5065

 7.1905, 5.4612,  
4.1103


 102.7699, 94.9417,  
90.1207

 3.6289, 2.5203,  
1.6860

130.9011,  
122.1794, 117.2934

 1.4944, 0.8868,  
0.3511

163.7475,  
154.1840, 149.4431

 0.3220, 0.0000,  
0.0000

201.6745,

 0.0000, 0.0000,

191.3399, 186.9883

0.0000

245.0476,  
234.0315, 230.3475

■ 30.0913, 25.9717,  
22.8291

■ 30.0913, 25.9717,  
22.8291

■ 26.9526, 21.3791,  
16.5886

■ 33.8596, 31.4860,  
30.3195

■ 24.4072, 17.6545,  
11.5287

■ 38.2870, 37.9646,  
39.1211

■ 22.4185, 14.7444,  
7.5754

■ 43.4037, 45.4516,  
49.2930

■ 20.9449, 12.5879,  
4.6460

■ 49.2372, 53.9876,  
60.8901

■ 19.9388, 11.1157,  
2.6462

■ 55.8138, 63.6109,  
73.9644

■ 19.3440, 10.2453,  
1.4641

■ 63.1582, 74.3578,  
88.5653

■ 19.0561, 9.8240,  
0.8919

■ 71.2942, 86.2629,  
104.7399

■ 72.8660, 88.5637,  
107.8618

# Harmonies

## Analogous

The Analogous color harmony consists of three colors that are next to each other on the color wheel.



30.4845, 25.9717, 30.5112



30.0913, 25.9717, 22.8291



28.1959, 25.9717, 17.6787

# Triad

The Triadic color harmony groups three colors that are evenly spaced from another and form a triangle on the color wheel.



30.0913, 25.9717, 22.8291



20.6360, 25.9717, 19.7147



23.9333, 25.9717, 46.7200

# Complementary

The Complementary color scheme is a pair of colors which are on the opposite of each other on the color wheel.



30.0913, 25.9717, 22.8291



33.3211, 40.7422, 49.8238

# Split Complementary

Split-complementary colors differ from the complementary color scheme. The scheme consists of three colors, the original color and two neighbors of the complement color.



21.4789, 25.9717, 42.4433



30.0913, 25.9717, 22.8291



19.6726, 25.9717, 26.1580

# Square

The Square scheme is like the rectangle color scheme, but the four colors are evenly spaced on the color wheel.



30.0913, 25.9717, 22.8291



22.7009, 25.9717, 16.1349



19.9690, 25.9717, 34.5332



26.7822, 25.9717, 45.3603



# Rectangle

The Rectangle color scheme consists of four colors that form a rectangle on the color wheel.



30.0913, 25.9717, 22.8291



26.4093, 25.9717, 15.8818



19.9690, 25.9717, 34.5332



23.0380, 25.9717, 45.8690

# Sweetspot

The Sweet Spot groups the original color and five complimentary colors.



30.0920, 25.9729, 22.8296



70.1181, 70.2571, 73.1401



34.7302, 27.8274, 47.2567



14.8859, 14.7912, 15.2731



86.6293, 91.1408, 99.2523



17.0014, 17.8868, 19.4787



# Same Dimension

The Same Dimension uses a secret algorithm to generate beautiful new colors.



30.0920, 25.9729, 22.8296



50.0176, 40.8444, 33.1808



34.1490, 34.0870, 24.1820



8.4964, 8.5054, 8.8464



13.1370, 6.7725, 0.6148



0.4134, 0.2131, 0.0194



# Inverse Universe

The Inverse Universe completely reimagines the original color for something new.



33.3211, 40.7422, 49.8238



56.7060, 71.4364, 89.0945



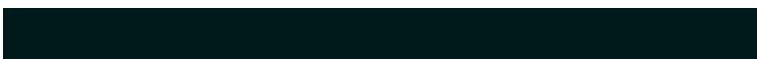
28.1894, 30.4788, 48.1132



8.7426, 9.6315, 10.9046



17.1392, 25.0787, 34.0743

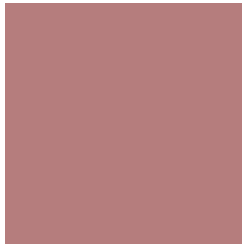


0.5393, 0.7891, 1.0721



# Previews

## White Background



This preview shows how the XYZ color 30.0913, 25.9717, 22.8291 looks on a white background.

## Color Contrast Check

Large Text (above 18pt) WCAG AA ✓ Pass

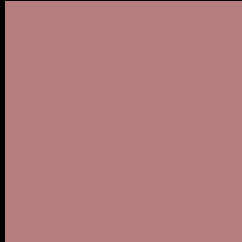
Any Text WCAG AA × Fail

Large Text (above 18pt) WCAG AAA × Fail

Any Text WCAG AAA × Fail



# Black Background



This preview shows how the XYZ color 30.0913, 25.9717, 22.8291 looks on a black background.

## Color Contrast Check

Large Text (above 18pt) WCAG AA ✓ Pass

Any Text WCAG AA ✓ Pass

Large Text (above 18pt) WCAG AAA ✓ Pass

Any Text WCAG AAA × Fail

If you want to check with other color combinations, try the [Color Contrast Checker](#).

# XYZ 30.0913, 25.9717, 22.8291

## Background



This preview shows how black text looks on a background with the XYZ color 30.0913, 25.9717, 22.8291.



This preview shows how white text looks on a background with the XYZ color 30.0913, 25.9717,



# Color Blindness Simulation

Color vision deficiency is a very complex topic, and I could not describe the different causes any better than Wikipedia does, so if you want to learn more, you should check out their [article about color blindness](#).

## Dichromacy



### Original Color

30.0913, 25.9717, 22.8291

### Protanopia

24.9679, 26.0880, 25.9098

### Deuteranopia

26.5372, 26.1289, 22.3836



## Tritanopia

30.7327, 26.0538, 25.5994

# Trichromacy



## Original Color

30.0913, 25.9717, 22.8291

## Protanomaly

26.4590, 25.8300, 24.7102

## Deuteranomaly

27.6907, 25.9033, 22.6092

## Tritanomaly

30.5283, 25.9721, 24.5232

# Monochromacy



## Original Color

30.0913, 25.9717, 22.8291

## Achromatopsia

25.7108, 27.0498, 29.4572

## Achromatomaly

26.9584, 26.4538, 26.9778

# CSS Examples

## Text

The CSS property to change the color of the text to XYZ 30.0913, 25.9717, 22.8291 is called "color". The color property can be set on classes, ids or directly on the HTML element.

This example shows how text in the color `rgb(181, 125, 125)` looks like.

```
.text, #text, p{  
    color:rgb(181, 125, 125)  
}
```

If you want to add a text shadow in that color use the text-shadow property, you can generate a text shadow directly with our [CSS Text Shadow Generator](#).

Here you see how black text with a 4 pixel rgb(181, 125, 125) colored shadow looks like.

```
.shadow{ text-shadow: 4px 4px 2px rgb(181, 125, 125) }
```

## Border

The CSS property to change the border of an element to XYZ 30.0913, 25.9717, 22.8291 is called "border". The border property can be set on classes, ids or directly on the HTML element.

This example shows the color as border, it can be applied via the CSS property "border" or "border-color".

```
.border, #border, table{ border:4px solid rgb(181, 125, 125) }
```



If only the border color should be changed use the property `border-color`.

```
.border{ border-color:rgb(181, 125, 125) }
```

If you want to add a box shadow in that color use:

Here you see how a box with a 4 pixel `rgb(181, 125, 125)` colored shadow looks like.

```
.boxshadow{ -moz-box-shadow:4px 4px 4px  
4px rgb(181, 125, 125); -webkit-box-  
shadow:4px 4px 4px 4px rgb(181, 125, 125);  
box-shadow:4px 4px 4px 4px rgb(181, 125,  
125) }
```

# Background

The CSS property to change the background color of an element to XYZ 30.0913, 25.9717, 22.8291 is called "background". The background property can be set on classes, ids or directly on the HTML element.

```
.background, #background, body{  
background: rgb(181, 125, 125) }
```

If only the background color should be changed can be used:

```
.background{ background-color: rgb(181,  
125, 125) }
```

This example shows the color as background, it is applied via the CSS property "background".

To optimize and compress your CSS code, you can use our [online CSS compressor and optimizer](#) based on csstidy. If you want to create a linear or radial gradient as background or border, check our [CSS Gradient Generator](#).

Hey! You found this booklet interesting? Support Converting Colors with the new Membership Option!

The pro membership hides all ads, plus gives you double the colors in the color bucket, and more awesome pro features!

**[Learn more, Memberships starting at \\$2.50/m!](#)**

**Follow me  
on Twitter!**

@ConvertingColor