

Converting Colors

XYZ(30.1829, 27.8631, 23.1896)

Have a look what the booklet for
XYZ(30.1829, 27.8631, 23.1896)
contains.

XYZ(30.1313, 27.7610, 23.1723)	3
<i>Conversions</i>	4
<i>Details</i>	6
<i>Harmonies</i>	12
<i>Previews</i>	24
<i>Color Blindness Simulation</i>	28
<i>CSS Examples</i>	31

Color

**XYZ(30.1313, 27.7610,
23.1723)**

Conversions

Conversions Part 1

Format	Color
Hex	B0867D
RGB	176, 134, 125
RGB Percent	69%, 53%, 49%
CMY	0.3098, 0.4745, 0.5098
CMYK	0.00, 0.24, 0.29, 0.31
HSL	11°, 24%, 59%
HSV	11°, 29%, 69%
XYZ	30.1313, 27.7610, 23.1723
YIQ	145.5320, 27.9210, 6.1050

Conversions

Conversions Part 2

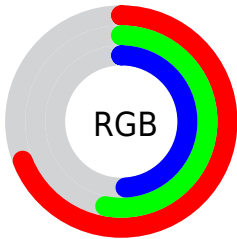
Format	Color
RYB	176, 136, 125
Decimal	11568765
CIELab	59.67, 14.76, 11.06
CIElCh	60, 18.441, 36.858
Yxy	27.7610, 0.3717, 0.3425
Android (android.graphics.Color)	4289758845 (0xFFB0867D)
YUV	145.5320, -10.1223, 26.7204
Hunter-Lab	52.6887, 9.8743, 10.8066

Details

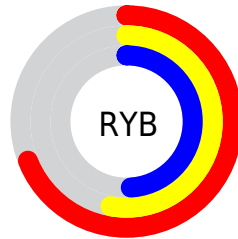
The XYZ color **30.1313, 27.7610, 23.1723** is a dark color, and the websafe version is hex **CC9999**. A complement of this color would be **30.1122, 35.1309, 46.2683**, and the grayscale version is **27.1629, 28.5775, 31.1209**.

A 20% lighter version of the original color is **59.0849, 55.9108, 49.7972**, and **12.5009, 11.0000, 8.3018** is the 20% darker color. If you saturate the color by 10%, you get **27.2375, 23.6159, 17.1435**, and if you desaturate by 10%, it is **33.5004, 32.5374, 30.3431**.

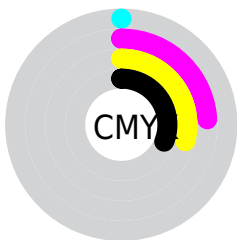
Distribution



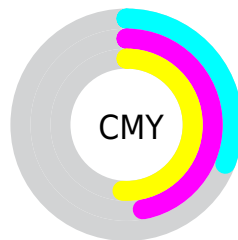
- Red (69%)
- Green (53%)
- Blue (49%)



- Red (69%)
- Yellow (53%)
- Blue (49%)



- Cyan (0%)
- Magenta (24%)
- Yellow (29%)
- Black (31%)



- Cyan (31%)
- Magenta (47%)
- Yellow (51%)

Brightness & Saturation Gradients

These gradients show how the XYZ color 30.1313, 27.7610, 23.1723 changes by changing the brightness by 10 percent. The first figure shows a shift by +10% for each color and the second figure -10%.

Similar to the brightness gradients but the following saturation gradients show a change of the XYZ color 30.1313, 27.7610, 23.1723 by changing the saturation by 10% instead.

■ 30.1313, 27.7610,
23.1723

■ 30.1313, 27.7610,
23.1723

294.4148,
291.3231, 281.7593

■ 20.0868, 18.1456,
14.5143

■ 59.2550, 56.1026,
49.6029

■ 12.5668, 11.0546,
8.3364

■ 79.0649, 75.5976,
68.2125

■ 7.2059, 6.1035,
4.2201

■ 102.8606, 99.1546,
90.9764

■ 3.6387, 2.9081,
1.7469

131.0076,
127.1580, 118.3132

■ 1.4998, 1.0840,
0.3925

163.8712,
159.9921, 150.6413

■ 0.3257, 0.0000,
0.0000

201.8167,

■ 0.0000, 0.0000,

198.0414, 188.3793

0.0000

245.2094,
241.6903, 231.9458

■ 30.1313, 27.7610,
23.1723

■ 30.1313, 27.7610,
23.1723

■ 27.2375, 23.6159,
17.1435

■ 33.5004, 32.5374,
30.3431

■ 24.7951, 20.0719,
12.1959

■ 37.3628, 37.9662,
38.7089

■ 22.7815, 17.1020,
8.2656

■ 41.7382, 44.0720,
48.3217

■ 21.1714, 14.6756,
5.2813

■ 46.6447, 50.8772,
59.2297

■ 19.9363, 12.7592,
3.1623

■ 52.0993, 58.4030,
71.4785

■ 19.0440, 11.3154,
1.8145

■ 58.1184, 66.6698,
85.1117

■ 18.4460, 10.2972,
1.0671

■ 64.7177, 75.6972,
100.1707

■ 18.3964, 10.2139,
1.0019

■ 70.1238, 84.7887,
107.2777

■ 71.7146, 87.9702,
107.8079

Harmonies

Analogous

The Analogous color harmony consists of three colors that are next to each other on the color wheel.



31.0834, 27.7610, 28.7223



30.1313, 27.7610, 23.1723



28.1843, 27.7610, 19.9067

Triad

The Triadic color harmony groups three colors that are evenly spaced from another and form a triangle on the color wheel.



30.1313, 27.7610, 23.1723



22.4810, 27.7610, 25.4643



26.9240, 27.7610, 44.8218

Complementary

The Complementary color scheme is a pair of colors which are on the opposite of each other on the color wheel.



30.1313, 27.7610, 23.1723



30.1122, 35.1309, 46.2683

Split Complementary

Split-complementary colors differ from the complementary color scheme. The scheme consists of three colors, the original color and two neighbors of the complement color.



24.6659, 27.7610, 43.6109



30.1313, 27.7610, 23.1723



22.1874, 27.7610, 31.7834

Square

The Square scheme is like the rectangle color scheme, but the four colors are evenly spaced on the color wheel.



30.1313, 27.7610, 23.1723



23.7915, 27.7610, 21.0877



22.9647, 27.7610, 38.5853



29.1625, 27.7610, 41.6859

Rectangle

The Rectangle color scheme consists of four colors that form a rectangle on the color wheel.



30.1313, 27.7610, 23.1723



26.6321, 27.7610, 19.1503



22.9647, 27.7610, 38.5853



26.1414, 27.7610, 44.9160

Sweetspot

The Sweet Spot groups the original color and five complimentary colors.



30.1320, 27.7623, 23.1729



67.6289, 68.6693, 69.9111



32.2597, 26.7062, 40.2568



14.4282, 14.5622, 14.6539



84.5950, 89.0005, 96.9216



16.2198, 17.0645, 18.5832

Same Dimension

The Same Dimension uses a secret algorithm to generate beautiful new colors.



30.1320, 27.7623, 23.1729



51.0722, 45.2369, 34.5469



34.0045, 35.5073, 24.4637



8.6137, 8.7399, 8.8855



13.5291, 7.5567, 0.7455



0.4622, 0.3108, 0.0356

Inverse Universe

The Inverse Universe completely reimagines the original color for something new.



30.1122, 35.1309, 46.2683



51.0209, 60.8547, 83.5523



25.9672, 26.8409, 44.8867



8.6125, 9.3712, 10.8612



13.2092, 17.2187, 32.7643



0.4490, 0.6086, 1.0420

Previews

White Background



This preview shows how the XYZ color 30.1313, 27.7610, 23.1723 looks on a white background.

Color Contrast Check

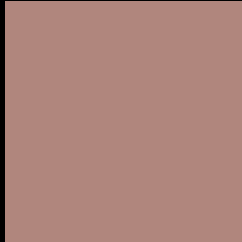
Large Text (above 18pt) WCAG AA ✓ Pass

Any Text WCAG AA × Fail

Large Text (above 18pt) WCAG AAA × Fail

Any Text WCAG AAA × Fail

Black Background



This preview shows how the XYZ color 30.1313, 27.7610, 23.1723 looks on a black background.

Color Contrast Check

Large Text (above 18pt) WCAG AA ✓ Pass

Any Text WCAG AA ✓ Pass

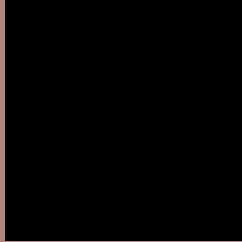
Large Text (above 18pt) WCAG AAA ✓ Pass

Any Text WCAG AAA × Fail

If you want to check with other color combinations, try the [Color Contrast Checker](#).

XYZ 30.1313, 27.7610, 23.1723

Background



This preview shows how black text looks on a background with the XYZ color 30.1313, 27.7610, 23.1723.



This preview shows how white text looks on a background with the XYZ color 30.1313, 27.7610,

Color Blindness Simulation

Color vision deficiency is a very complex topic, and I could not describe the different causes any better than Wikipedia does, so if you want to learn more, you should check out their [article about color blindness](#).

Dichromacy



Original Color

30.1313, 27.7610, 23.1723

Protanopia

26.5802, 28.0423, 25.1309

Deuteranopia

28.3878, 27.9198, 22.9616



Tritanopia

31.4938, 27.9205, 29.3205

Trichromacy



Original Color

30.1313, 27.7610, 23.1723

Protanomaly

27.5724, 27.6856, 24.3127

Deuteranomaly

28.9459, 27.7816, 22.9055

Tritanomaly

30.9629, 27.8997, 27.0458

Monochromacy



Original Color

30.1313, 27.7610, 23.1723

Achromatopsia

27.3213, 28.7441, 31.3023

Achromatomaly

28.1651, 28.3491, 28.0322

CSS Examples

Text

The CSS property to change the color of the text to XYZ 30.1313, 27.7610, 23.1723 is called "color". The color property can be set on classes, ids or directly on the HTML element.

This example shows how text in the color `rgb(176, 134, 125)` looks like.

```
.text, #text, p{  
    color:rgb(176, 134, 125)  
}
```

If you want to add a text shadow in that color use the text-shadow property, you can generate a text shadow directly with our [CSS Text Shadow Generator](#).

Here you see how black text with a 4 pixel rgb(176, 134, 125) colored shadow looks like.

```
.shadow{ text-shadow: 4px 4px 2px rgb(176, 134, 125) }
```

Border

The CSS property to change the border of an element to XYZ 30.1313, 27.7610, 23.1723 is called "border". The border property can be set on classes, ids or directly on the HTML element.

This example shows the color as border, it can be applied via the CSS property "border" or "border-color".

```
.border, #border, table{ border:4px solid rgb(176, 134, 125) }
```


If only the border color should be changed use the property `border-color`.

```
.border{ border-color:rgb(176, 134, 125) }
```

If you want to add a box shadow in that color use:

Here you see how a box with a 4 pixel `rgb(176, 134, 125)` colored shadow looks like.

```
.boxshadow{ -moz-box-shadow:4px 4px 4px  
4px rgb(176, 134, 125); -webkit-box-  
shadow:4px 4px 4px 4px rgb(176, 134, 125);  
box-shadow:4px 4px 4px 4px rgb(176, 134,  
125) }
```

Background

The CSS property to change the background color of an element to XYZ 30.1313, 27.7610, 23.1723 is called "background". The background property can be set on classes, ids or directly on the HTML element.

```
.background, #background, body{  
background: rgb(176, 134, 125) }
```

If only the background color should be changed can be used:

```
.background{ background-color: rgb(176,  
134, 125) }
```

This example shows the color as background, it is applied via the CSS property "background".

To optimize and compress your CSS code, you can use our [online CSS compressor and optimizer](#) based on csstidy. If you want to create a linear or radial gradient as background or border, check our [CSS Gradient Generator](#).

Hey! You found this booklet interesting? Support Converting Colors with the new Membership Option!

The pro membership hides all ads, plus gives you double the colors in the color bucket, and more awesome pro features!

[Learn more, Memberships starting at \\$2.50/m!](#)

**Follow me
on Twitter!**

@ConvertingColor