

Converting Colors

XYZ(30.2263, 26.4489, 25.3348)

Have a look what the booklet for
XYZ(30.2263, 26.4489, 25.3348)
contains.

XYZ(30.1143, 26.3097, 25.3209)	3
<i>Conversions</i>	4
<i>Details</i>	6
<i>Harmonies</i>	12
<i>Previews</i>	24
<i>Color Blindness Simulation</i>	28
<i>CSS Examples</i>	31

Color

**XYZ(30.1143, 26.3097,
25.3209)**

Conversions

Conversions Part 1

Format	Color
Hex	B27F84
RGB	178, 127, 132
RGB Percent	70%, 50%, 52%
CMY	0.3020, 0.5019, 0.4823
CMYK	0.00, 0.29, 0.26, 0.30
HSL	354°, 25%, 60%
HSV	354°, 29%, 70%
XYZ	30.1143, 26.3097, 25.3209
YIQ	142.8190, 28.7910, 12.3670

Conversions

Conversions Part 2

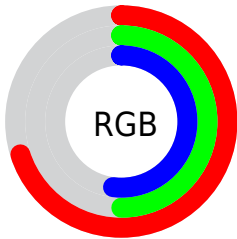
Format	Color
R _Y B	178, 127, 132
Decimal	11698052
CIE Lab	58.33, 20.48, 5.16
CIE LCh	58, 21.118, 14.157
Yxy	26.3097, 0.3684, 0.3219
Android (android.graphics.Color)	4289888132 (0xFFB27F84)
YUV	142.8190, -5.3338, 30.8537
Hunter-Lab	51.2930, 15.0353, 6.6364

Details

The XYZ color **30.1143, 26.3097, 25.3209** is a dark color, and the websafe version is hex **CC9999**. A complement of this color would be **32.2167, 39.3705, 45.4384**, and the grayscale version is **26.0494, 27.4060, 29.8452**.

A 20% lighter version of the original color is **59.3392, 53.8075, 53.1573**, and **12.5274, 10.2174, 9.4955** is the 20% darker color. If you saturate the color by 10%, you get **26.9998, 21.7057, 19.2728**, and if you desaturate by 10%, it is **33.8055, 31.7961, 32.3962**.

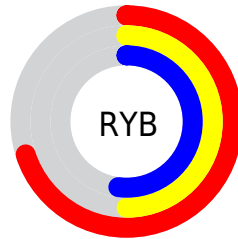
Distribution



Red (70%)

Green (50%)

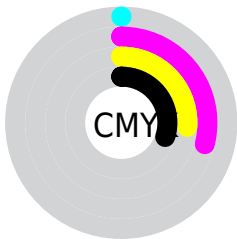
Blue (52%)



Red (70%)

Yellow (50%)

Blue (52%)

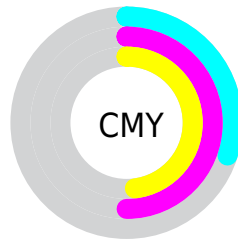


Cyan (0%)

Magenta (29%)

Yellow (26%)

Black (30%)



Cyan (30%)

Magenta (50%)

Yellow (48%)

Brightness & Saturation Gradients

These gradients show how the XYZ color 30.1143, 26.3097, 25.3209 changes by changing the brightness by 10 percent. The first figure shows a shift by +10% for each color and the second figure -10%.

Similar to the brightness gradients but the following saturation gradients show a change of the XYZ color 30.1143, 26.3097, 25.3209 by changing the saturation by 10% instead.

■ 30.1143, 26.3097,
25.3209

■ 30.1143, 26.3097,
25.3209

294.3371,
284.2991, 292.9310

■ 20.0739, 17.0555,
16.0951

■ 59.2283, 53.7741,
53.1479

■ 12.5573, 10.2741,
9.4364

■ 79.0325, 72.7532,
72.5862

■ 7.1993, 5.5810,
4.9262

■ 102.8221, 95.7426,
96.2657

■ 3.6345, 2.5920,
2.1461

130.9623,
123.1267, 124.6050

■ 1.4975, 0.9227,
0.6430

163.8186,
155.2901, 158.0227

■ 0.3241, 0.0000,
0.0000

201.7563,

■ 0.0000, 0.0000,

192.6170, 196.9372

0.0000

245.1407,
235.4918, 241.7671

■ 30.1143, 26.3097,
25.3209

■ 30.1143, 26.3097,
25.3209

■ 26.9998, 21.7057,
19.2728

■ 33.8055, 31.7961,
32.3962

■ 24.4308, 17.9345,
14.2025

■ 38.0983, 38.2037,
40.5416

■ 22.3763, 14.9474,
10.0590


■ 43.0187, 45.5734,
49.7997


■ 20.8014, 12.6891,
6.7861


■ 48.5905, 53.9426,
60.2101


■ 19.6669, 11.0969,
4.3213


■ 54.8364, 63.3469,
71.8106


 18.9272, 10.0979,
2.5938

 61.7779, 73.8197,
84.6372

 18.5090, 9.5663,
1.5146

 69.4355, 85.3934,
98.7245

 18.4648, 9.5068,
1.4103

 72.1701, 88.2050,
107.8292

Harmonies

Analogous

The Analogous color harmony consists of three colors that are next to each other on the color wheel.



30.0717, 26.3097, 32.6897



30.1143, 26.3097, 25.3209



28.7247, 26.3097, 19.8705

Triad

The Triadic color harmony groups three colors that are evenly spaced from another and form a triangle on the color wheel.



30.1143, 26.3097, 25.3209



21.7176, 26.3097, 19.6404



23.6807, 26.3097, 44.5446

Complementary

The Complementary color scheme is a pair of colors which are on the opposite of each other on the color wheel.



30.1143, 26.3097, 25.3209



32.2167, 39.3705, 45.4384

Split Complementary

Split-complementary colors differ from the complementary color scheme. The scheme consists of three colors, the original color and two neighbors of the complement color.



21.6240, 26.3097, 39.6881



30.1143, 26.3097, 25.3209



20.5448, 26.3097, 24.9518

Square

The Square scheme is like the rectangle color scheme, but the four colors are evenly spaced on the color wheel.



30.1143, 26.3097, 25.3209



23.8166, 26.3097, 16.9922



20.5118, 26.3097, 32.2519



26.2356, 26.3097, 44.6895

Rectangle

The Rectangle color scheme consists of four colors that form a rectangle on the color wheel.



30.1143, 26.3097, 25.3209



27.2247, 26.3097, 17.6981



20.5118, 26.3097, 32.2519



22.9124, 26.3097, 43.3760

Sweetspot

The Sweet Spot groups the original color and five complimentary colors.



30.1150, 26.3109, 25.3214



68.6675, 68.6498, 72.7233



32.8375, 27.2672, 45.6519



14.9508, 14.8170, 15.6154



86.6293, 91.1408, 99.2523



17.0014, 17.8868, 19.4787

Same Dimension

The Same Dimension uses a secret algorithm to generate beautiful new colors.



30.1150, 26.3109, 25.3214



51.1339, 42.5658, 39.1850



32.6877, 31.9904, 24.5322



8.5291, 8.5183, 9.0185



13.2230, 6.8068, 1.0685



0.4270, 0.2186, 0.0914

Inverse Universe

The Inverse Universe completely reimagines the original color for something new.



30.1150, 26.3109, 25.3214



51.1339, 42.5658, 39.1850



28.9481, 32.0449, 46.7790



8.5291, 8.5183, 9.0185



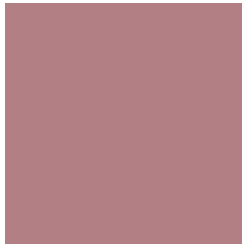
13.2230, 6.8068, 1.0685



0.4270, 0.2186, 0.0914

Previews

White Background



This preview shows how the XYZ color 30.1143, 26.3097, 25.3209 looks on a white background.

Color Contrast Check

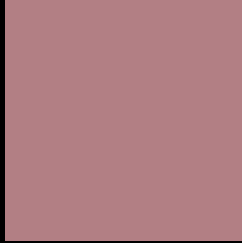
Large Text (above 18pt) WCAG AA ✓ Pass

Any Text WCAG AA ✗ Fail

Large Text (above 18pt) WCAG AAA ✗ Fail

Any Text WCAG AAA ✗ Fail

Black Background



This preview shows how the XYZ color 30.1143, 26.3097, 25.3209 looks on a black background.

Color Contrast Check

Large Text (above 18pt) WCAG AA ✓ Pass

Any Text WCAG AA ✓ Pass

Large Text (above 18pt) WCAG AAA ✓ Pass

Any Text WCAG AAA × Fail

If you want to check with other color combinations, try the [Color Contrast Checker](#).

XYZ 30.1143, 26.3097, 25.3209

Background



This preview shows how black text looks on a background with the XYZ color 30.1143, 26.3097, 25.3209.



This preview shows how white text looks on a background with the XYZ color 30.1143, 26.3097,

Color Blindness Simulation

Color vision deficiency is a very complex topic, and I could not describe the different causes any better than Wikipedia does, so if you want to learn more, you should check out their [article about color blindness](#).

Dichromacy



Original Color

30.1143, 26.3097, 25.3209

Protanopia

25.3660, 26.4599, 28.1964

Deuteranopia

26.9340, 26.4891, 24.8124



Tritanopia

30.2649, 26.1643, 26.7476

Trichromacy



Original Color

30.1143, 26.3097, 25.3209

Protanomaly

26.8182, 26.1734, 26.9311

Deuteranomaly

28.0013, 26.4131, 25.0951

Tritanomaly

30.1941, 26.1360, 26.3750

Monochromacy



Original Color

30.1143, 26.3097, 25.3209

Achromatopsia

26.1081, 27.4677, 29.9124

Achromatomaly

27.3162, 26.8233, 28.1638

CSS Examples

Text

The CSS property to change the color of the text to XYZ 30.1143, 26.3097, 25.3209 is called "color". The color property can be set on classes, ids or directly on the HTML element.

This example shows how text in the color `rgb(178, 127, 132)` looks like.

```
.text, #text, p{  
    color:rgb(178, 127, 132)  
}
```

If you want to add a text shadow in that color use the text-shadow property, you can generate a text shadow directly with our [CSS Text Shadow Generator](#).

Here you see how black text with a 4 pixel rgb(178, 127, 132) colored shadow looks like.

```
.shadow{ text-shadow: 4px 4px 2px rgb(178, 127, 132) }
```

Border

The CSS property to change the border of an element to XYZ 30.1143, 26.3097, 25.3209 is called "border". The border property can be set on classes, ids or directly on the HTML element.

This example shows the color as border, it can be applied via the CSS property "border" or "border-color".

```
.border, #border, table{ border:4px solid rgb(178, 127, 132) }
```


If only the border color should be changed use the property `border-color`.

```
.border{ border-color:rgb(178, 127, 132) }
```

If you want to add a box shadow in that color use:

Here you see how a box with a 4 pixel `rgb(178, 127, 132)` colored shadow looks like.

```
.boxshadow{ -moz-box-shadow:4px 4px 4px  
4px rgb(178, 127, 132); -webkit-box-  
shadow:4px 4px 4px 4px rgb(178, 127, 132);  
box-shadow:4px 4px 4px 4px rgb(178, 127,  
132) }
```

Background

The CSS property to change the background color of an element to XYZ 30.1143, 26.3097, 25.3209 is called "background". The background property can be set on classes, ids or directly on the HTML element.

```
.background, #background, body{  
background: rgb(178, 127, 132) }
```

If only the background color should be changed can be used:

```
.background{ background-color: rgb(178,  
127, 132) }
```

This example shows the color as background, it is applied via the CSS property "background".

To optimize and compress your CSS code, you can use our [online CSS compressor and optimizer](#) based on csstidy. If you want to create a linear or radial gradient as background or border, check our [CSS Gradient Generator](#).

Hey! You found this booklet interesting? Support Converting Colors with the new Membership Option!

The pro membership hides all ads, plus gives you double the colors in the color bucket, and more awesome pro features!

[Learn more, Memberships starting at \\$2.50/m!](#)

**Follow me
on Twitter!**

@ConvertingColor