

Converting Colors

XYZ(30.2834, 26.6530, 25.7599)

Have a look what the booklet for
XYZ(30.2834, 26.6530, 25.7599)
contains.

XYZ(30.3129, 26.5968, 25.7263)	3
<i>Conversions</i>	4
<i>Details</i>	6
<i>Harmonies</i>	12
<i>Previews</i>	24
<i>Color Blindness Simulation</i>	28
<i>CSS Examples</i>	31

Color

**XYZ(30.3129, 26.5968,
25.7263)**

Conversions

Conversions Part 1

Format	Color
Hex	B28085
RGB	178, 128, 133
RGB Percent	70%, 50%, 52%
CMY	0.3020, 0.4980, 0.4784
CMYK	0.00, 0.28, 0.25, 0.30
HSL	354°, 25%, 60%
HSV	354°, 28%, 70%
XYZ	30.3129, 26.5968, 25.7263
YIQ	143.5200, 28.1950, 12.1550

Conversions

Conversions Part 2

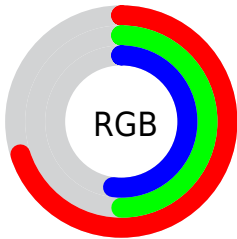
Format	Color
RYB	178, 128, 133
Decimal	11698309
CIELab	58.60, 20.06, 4.98
CIELCh	59, 20.671, 13.930
Yxy	26.5968, 0.3668, 0.3219
Android (android.graphics.Color)	4289888389 (0xFFB28085)
YUV	143.5200, -5.1864, 30.2390
Hunter-Lab	51.5721, 14.6671, 6.5241

Details

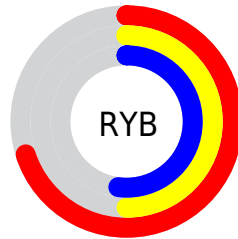
The XYZ color **30.3129, 26.5968, 25.7263** is a light color, and the websafe version is hex **CC9999**. A complement of this color would be **32.3664, 39.4477, 45.4455**, and the grayscale version is **26.3293, 27.7004, 30.1658**.

A 20% lighter version of the original color is **59.6477, 54.2551, 53.7829**, and **12.6368, 10.3740, 9.7238** is the 20% darker color. If you saturate the color by 10%, you get **27.1679, 21.9450, 19.6272**, and if you desaturate by 10%, it is **34.0355, 32.1332, 32.8515**.

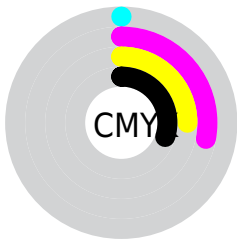
Distribution



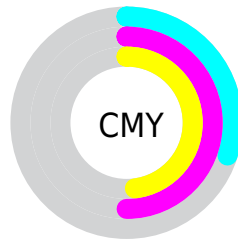
- Red (70%)
- Green (50%)
- Blue (52%)



- Red (70%)
- Yellow (50%)
- Blue (52%)



- Cyan (0%)
- Magenta (28%)
- Yellow (25%)
- Black (30%)



- Cyan (30%)
- Magenta (50%)
- Yellow (48%)

Brightness & Saturation Gradients

These gradients show how the XYZ color 30.3129, 26.5968, 25.7263 changes by changing the brightness by 10 percent. The first figure shows a shift by +10% for each color and the second figure -10%.

Similar to the brightness gradients but the following saturation gradients show a change of the XYZ color 30.3129, 26.5968, 25.7263 by changing the saturation by 10% instead.

30.3129, 26.5968,
25.7263

30.3129, 26.5968,
25.7263

295.2440,
285.6996, 294.9985

20.2255, 17.2706,
16.3951

59.5399, 54.2362,
53.8117

12.6683, 10.4276,
9.6468

79.4102, 73.3182,
73.4030

7.2759, 5.6834,
5.0629

103.2721, 96.4209,
97.2514

3.6831, 2.6535,
2.2248

131.4910,
123.9288, 125.7754

1.5245, 0.9537,
0.6886

164.4323,
156.2262, 159.3935

0.3424, 0.0000,
0.0000

202.4613,

0.0000, 0.0000,

193.6976, 198.5244

0.0000

245.9434,
236.7272, 243.5866

■ 30.3129, 26.5968,
25.7263

■ 30.3129, 26.5968,
25.7263

■ 27.1679, 21.9450,
19.6272

■ 34.0355, 32.1332,
32.8515

■ 24.5694, 18.1284,
14.5054

■ 38.3604, 38.5928,
41.0453

■ 22.4867, 15.0986,
10.3104

■ 43.3136, 46.0164,
50.3500

■ 20.8852, 12.8006,
6.9865

■ 48.9186, 54.4413,
60.8048

■ 19.7260, 11.1724,
4.4723

■ 55.1981, 63.9027,
72.4472

■ 18.9640, 10.1417,
2.6979

■ 62.1734, 74.4343,
85.3130

■ 18.5311, 9.5925,
1.5771

■ 69.8651, 86.0680,
99.4363

■ 18.4676, 9.5080,
1.4251

■ 72.1702, 88.2050,
107.8292

Harmonies

Analogous

The Analogous color harmony consists of three colors that are next to each other on the color wheel.



30.2598, 26.5968, 32.9989



30.3129, 26.5968, 25.7263



28.9557, 26.5968, 20.3122

Triad

The Triadic color harmony groups three colors that are evenly spaced from another and form a triangle on the color wheel.



30.3129, 26.5968, 25.7263



22.0456, 26.5968, 20.0226



23.9538, 26.5968, 44.5555

Complementary

The Complementary color scheme is a pair of colors which are on the opposite of each other on the color wheel.



30.3129, 26.5968, 25.7263



32.3664, 39.4477, 45.4455

Split Complementary

Split-complementary colors differ from the complementary color scheme. The scheme consists of three colors, the original color and two neighbors of the complement color.



21.9283, 26.5968, 39.7669



30.3129, 26.5968, 25.7263



20.8780, 26.5968, 25.2638

Square

The Square scheme is like the rectangle color scheme, but the four colors are evenly spaced on the color wheel.



30.3129, 26.5968, 25.7263



24.1238, 26.5968, 17.4113



20.8365, 26.5968, 32.4526



26.4715, 26.5968, 44.7355

Rectangle

The Rectangle color scheme consists of four colors that form a rectangle on the color wheel.



30.3129, 26.5968, 25.7263



27.4831, 26.5968, 18.1406



20.8365, 26.5968, 32.4526



23.1969, 26.5968, 43.3995

Sweetspot

The Sweet Spot groups the original color and five complimentary colors.



30.3136, 26.5980, 25.7268



69.5213, 69.9214, 74.3521



32.9894, 27.5382, 45.6963



15.1266, 15.0785, 15.9521



86.6293, 91.1408, 99.2523



17.0014, 17.8868, 19.4787

Same Dimension

The Same Dimension uses a secret algorithm to generate beautiful new colors.



30.3136, 26.5980, 25.7268



51.1476, 42.5713, 39.2568



32.8471, 32.2044, 24.9085



8.5297, 8.5186, 9.0220



13.2252, 6.8076, 1.0798



0.4273, 0.2187, 0.0929

Inverse Universe

The Inverse Universe completely reimagines the original color for something new.



30.3136, 26.5980, 25.7268



51.1476, 42.5713, 39.2568



29.1659, 32.2583, 46.8089



8.5297, 8.5186, 9.0220



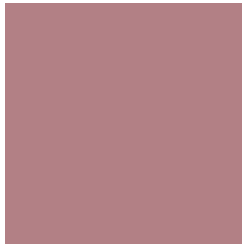
13.2252, 6.8076, 1.0798



0.4273, 0.2187, 0.0929

Previews

White Background



This preview shows how the XYZ color 30.3129, 26.5968, 25.7263 looks on a white background.

Color Contrast Check

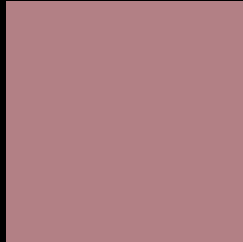
Large Text (above 18pt) WCAG AA ✓ Pass

Any Text WCAG AA ✗ Fail

Large Text (above 18pt) WCAG AAA ✗ Fail

Any Text WCAG AAA ✗ Fail

Black Background



This preview shows how the XYZ color 30.3129, 26.5968, 25.7263 looks on a black background.

Color Contrast Check

Large Text (above 18pt) WCAG AA ✓ Pass

Any Text WCAG AA ✓ Pass

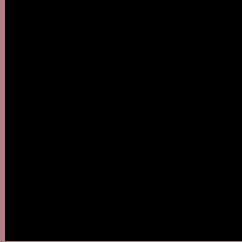
Large Text (above 18pt) WCAG AAA ✓ Pass

Any Text WCAG AAA × Fail

If you want to check with other color combinations, try the [Color Contrast Checker](#).

XYZ 30.3129, 26.5968, 25.7263

Background



This preview shows how black text looks on a background with the XYZ color 30.3129, 26.5968, 25.7263.



This preview shows how white text looks on a background with the XYZ color 30.3129, 26.5968,

25.7263.

Color Blindness Simulation

Color vision deficiency is a very complex topic, and I could not describe the different causes any better than Wikipedia does, so if you want to learn more, you should check out their [article about color blindness](#).

Dichromacy



Original Color

30.3129, 26.5968, 25.7263

Protanopia

25.7601, 26.8725, 28.6401

Deuteranopia

27.1990, 26.6179, 25.1770



Tritanopia

30.4648, 26.4499, 27.1666

Trichromacy



Original Color

30.3129, 26.5968, 25.7263

Protanomaly

27.0298, 26.4824, 27.3539

Deuteranomaly

28.2783, 26.5480, 25.4636

Tritanomaly

30.3934, 26.4213, 26.7905

Monochromacy



Original Color

30.3129, 26.5968, 25.7263

Achromatopsia

26.5089, 27.8894, 30.3716

Achromatomaly

27.5324, 27.1383, 28.5980

CSS Examples

Text

The CSS property to change the color of the text to XYZ 30.3129, 26.5968, 25.7263 is called "color". The color property can be set on classes, ids or directly on the HTML element.

This example shows how text in the color `rgb(178, 128, 133)` looks like.

```
.text, #text, p{  
    color:rgb(178, 128, 133)  
}
```

If you want to add a text shadow in that color use the text-shadow property, you can generate a text shadow directly with our [CSS Text Shadow Generator](#).

Here you see how black text with a 4 pixel rgb(178, 128, 133) colored shadow looks like.

```
.shadow{ text-shadow: 4px 4px 2px rgb(178, 128, 133) }
```

Border

The CSS property to change the border of an element to XYZ 30.3129, 26.5968, 25.7263 is called "border". The border property can be set on classes, ids or directly on the HTML element.

This example shows the color as border, it can be applied via the CSS property "border" or "border-color".

```
.border, #border, table{ border:4px solid rgb(178, 128, 133) }
```


If only the border color should be changed use the property `border-color`.

```
.border{ border-color:rgb(178, 128, 133) }
```

If you want to add a box shadow in that color use:

Here you see how a box with a 4 pixel `rgb(178, 128, 133)` colored shadow looks like.

```
.boxshadow{ -moz-box-shadow:4px 4px 4px  
4px rgb(178, 128, 133); -webkit-box-  
shadow:4px 4px 4px 4px rgb(178, 128, 133);  
box-shadow:4px 4px 4px 4px rgb(178, 128,  
133) }
```

Background

The CSS property to change the background color of an element to XYZ 30.3129, 26.5968, 25.7263 is called "background". The background property can be set on classes, ids or directly on the HTML element.

```
.background, #background, body{  
background: rgb(178, 128, 133) }
```

If only the background color should be changed can be used:

```
.background{ background-color: rgb(178,  
128, 133) }
```

This example shows the color as background, it is applied via the CSS property "background".

To optimize and compress your CSS code, you can use our [online CSS compressor and optimizer](#) based on csstidy. If you want to create a linear or radial gradient as background or border, check our [CSS Gradient Generator](#).

Hey! You found this booklet interesting? Support Converting Colors with the new Membership Option!

The pro membership hides all ads, plus gives you double the colors in the color bucket, and more awesome pro features!

[Learn more, Memberships starting at \\$2.50/m!](#)

**Follow me
on Twitter!**

@ConvertingColor