

Converting Colors

XYZ(30.3102, 25.1522, 19.7813)

Have a look what the booklet for
XYZ(30.3102, 25.1522, 19.7813)
contains.

XYZ(30.3624, 25.2587, 19.7981)	3
<i>Conversions</i>	4
<i>Details</i>	6
<i>Harmonies</i>	12
<i>Previews</i>	24
<i>Color Blindness Simulation</i>	28
<i>CSS Examples</i>	31

Color

**XYZ(30.3624, 25.2587,
19.7981)**

Conversions

Conversions Part 1

Format	Color
Hex	BB7874
RGB	187, 120, 116
RGB Percent	73%, 47%, 45%
CMY	0.2667, 0.5294, 0.5451
CMYK	0.00, 0.36, 0.38, 0.27
HSL	3°, 34%, 59%
HSV	3°, 38%, 73%
XYZ	30.3624, 25.2587, 19.7981
YIQ	139.5770, 41.2160, 12.9600

Conversions

Conversions Part 2

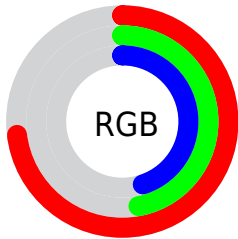
Format	Color
R _Y B	187, 120, 116
Decimal	12286068
CIE Lab	57.33, 25.73, 13.12
CIE LCh	57, 28.886, 27.013
Yxy	25.2587, 0.4026, 0.3349
Android (android.graphics.Color)	4290476148 (0xFFBB7874)
YUV	139.5770, -11.6235, 41.5900
Hunter-Lab	50.2580, 19.8857, 11.8246

Details

The XYZ color **30.3624, 25.2587, 19.7981** is a dark color, and the websafe version is hex **996666**. A complement of this color would be **33.1049, 41.1662, 53.2149**, and the grayscale version is **24.7963, 26.0876, 28.4094**.

A 20% lighter version of the original color is **59.6676, 52.1268, 43.9624**, and **12.5936, 9.6230, 6.6625** is the 20% darker color. If you saturate the color by 10%, you get **27.4521, 21.0071, 13.9908**, and if you desaturate by 10%, it is **33.8841, 30.3825, 26.8899**.

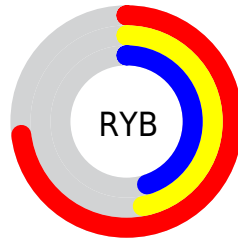
Distribution



Red (73%)

Green (47%)

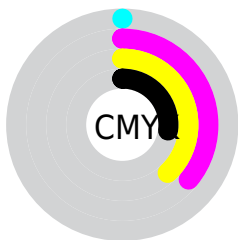
Blue (45%)



Red (73%)

Yellow (47%)

Blue (45%)

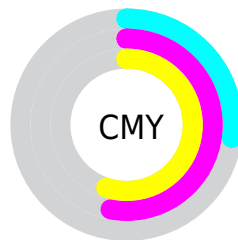


Cyan (0%)

Magenta (36%)

Yellow (38%)

Black (27%)



Cyan (27%)

Magenta (53%)

Yellow (55%)

Brightness & Saturation Gradients

These gradients show how the XYZ color 30.3624, 25.2587, 19.7981 changes by changing the brightness by 10 percent. The first figure shows a shift by +10% for each color and the second figure -10%.

Similar to the brightness gradients but the following saturation gradients show a change of the XYZ color 30.3624, 25.2587, 19.7981 by changing the saturation by 10% instead.

■ 30.3624, 25.2587,
19.7981

■ 30.3624, 25.2587,
19.7981

295.4697,
279.1238, 263.3880

■ 20.2633, 16.2699,
12.0657

■ 59.6175, 52.0766,
43.9329

■ 12.6959, 9.7153,
6.6654

■ 79.5042, 70.6745,
61.1725

■ 7.2950, 5.2106,
3.1785

■ 103.3841, 93.2442,
82.4182

■ 3.6953, 2.3714,
1.1865

131.6227,
120.1701, 108.0886

■ 1.5312, 0.8111,
0.0000

164.5851,
151.8367, 138.6023

■ 0.3469, 0.0000,
0.0000

202.6368,

■ 0.0000, 0.0000,

188.6282, 174.3777

0.0000

246.1432,
230.9291, 215.8334

■ 30.3624, 25.2587,
19.7981

■ 30.3624, 25.2587,
19.7981

■ 27.4521, 21.0071,
13.9908

■ 33.8841, 30.3825,
26.8899

■ 25.1164, 17.5756,
9.3898

■ 38.0471, 36.4193,
35.3352

■ 23.3178, 14.9125,
5.9106

■ 42.8819, 43.4118,
45.1997

■ 22.0134, 12.9585,
3.4572

■ 48.4164, 51.3991,
56.5446

■ 21.1538, 11.6458,
1.9176

■ 54.6768, 60.4180,
69.4273

■ 20.6732, 10.8908,
1.1217

■ 61.6881, 70.5034,
83.9023

■ 20.6081, 10.7939,
0.9973

■ 69.4740, 81.6886,
100.0213

■ 74.3036, 89.3048,
107.9291

Harmonies

Analogous

The Analogous color harmony consists of three colors that are next to each other on the color wheel.



31.1993, 25.2587, 28.4966



30.3624, 25.2587, 19.7981



27.7727, 25.2587, 14.5268

Triad

The Triadic color harmony groups three colors that are evenly spaced from another and form a triangle on the color wheel.



30.3624, 25.2587, 19.7981



18.8988, 25.2587, 18.4625



23.6662, 25.2587, 50.9506

Complementary

The Complementary color scheme is a pair of colors which are on the opposite of each other on the color wheel.



30.3624, 25.2587, 19.7981



33.1049, 41.1662, 53.2149

Split Complementary

Split-complementary colors differ from the complementary color scheme. The scheme consists of three colors, the original color and two neighbors of the complement color.



20.5992, 25.2587, 46.5390



30.3624, 25.2587, 19.7981



18.0159, 25.2587, 26.5316

Square

The Square scheme is like the rectangle color scheme, but the four colors are evenly spaced on the color wheel.



30.3624, 25.2587, 19.7981



21.1404, 25.2587, 13.8942



18.6079, 25.2587, 36.9838



27.1231, 25.2587, 47.9481

Rectangle

The Rectangle color scheme consists of four colors that form a rectangle on the color wheel.



30.3624, 25.2587, 19.7981



25.5175, 25.2587, 12.9193



18.6079, 25.2587, 36.9838



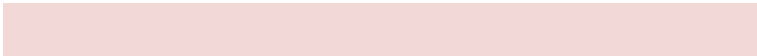
22.5585, 25.2587, 50.2650

Sweetspot

The Sweet Spot groups the original color and five complimentary colors.



30.3631, 25.2599, 19.7986



73.8872, 73.5389, 74.9968



35.3332, 26.4935, 48.2973



16.0077, 15.8136, 15.9777



90.7827, 95.5105, 104.0109



18.6292, 19.5994, 21.3438

Same Dimension

The Same Dimension uses a secret algorithm to generate beautiful new colors.



30.3631, 25.2599, 19.7986



49.7479, 38.4749, 26.2114



35.3757, 35.2853, 21.4695



9.5722, 9.6204, 9.9290



14.2170, 7.4728, 0.6931



0.5718, 0.3226, 0.0321

Inverse Universe

The Inverse Universe completely reimagines the original color for something new.



33.1049, 41.1662, 53.2149



55.3815, 71.2073, 95.0269



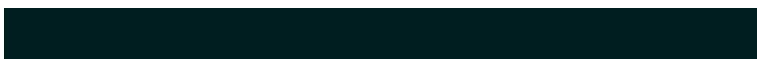
26.7544, 28.4652, 51.0980



9.7613, 10.7148, 12.2259



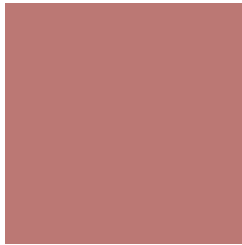
16.9567, 24.0251, 36.1365



0.6784, 0.9694, 1.4202

Previews

White Background



This preview shows how the XYZ color 30.3624, 25.2587, 19.7981 looks on a white background.

Color Contrast Check

Large Text (above 18pt) WCAG AA ✓ Pass

Any Text WCAG AA ✗ Fail

Large Text (above 18pt) WCAG AAA ✗ Fail

Any Text WCAG AAA ✗ Fail

Black Background



This preview shows how the XYZ color 30.3624, 25.2587, 19.7981 looks on a black background.

Color Contrast Check

Large Text (above 18pt) WCAG AA ✓ Pass

Any Text WCAG AA ✓ Pass

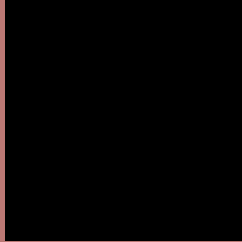
Large Text (above 18pt) WCAG AAA ✓ Pass

Any Text WCAG AAA × Fail

If you want to check with other color combinations, try the [Color Contrast Checker](#).

XYZ 30.3624, 25.2587, 19.7981

Background



This preview shows how black text looks on a background with the XYZ color 30.3624, 25.2587, 19.7981.



This preview shows how white text looks on a background with the XYZ color 30.3624, 25.2587,

Color Blindness Simulation

Color vision deficiency is a very complex topic, and I could not describe the different causes any better than Wikipedia does, so if you want to learn more, you should check out their [article about color blindness](#).

Dichromacy



Original Color

30.3624, 25.2587, 19.7981

Protanopia

24.2917, 25.5869, 23.0605

Deuteranopia

25.9220, 25.4635, 19.4683



Tritanopia

31.0482, 25.1805, 23.3026

Trichromacy



Original Color

30.3624, 25.2587, 19.7981

Protanomaly

26.1264, 25.1113, 21.8823

Deuteranomaly

27.3912, 25.2222, 19.6444

Tritanomaly

30.9110, 25.3151, 21.9960

Monochromacy



Original Color

30.3624, 25.2587, 19.7981

Achromatopsia

24.9269, 26.2251, 28.5591

Achromatomaly

26.3889, 25.5818, 25.0197

CSS Examples

Text

The CSS property to change the color of the text to XYZ 30.3624, 25.2587, 19.7981 is called "color". The color property can be set on classes, ids or directly on the HTML element.

This example shows how text in the color `rgb(187, 120, 116)` looks like.

```
.text, #text, p{  
    color:rgb(187, 120, 116)  
}
```

If you want to add a text shadow in that color use the text-shadow property, you can generate a text shadow directly with our [CSS Text Shadow Generator](#).

Here you see how black text with a 4 pixel rgb(187, 120, 116) colored shadow looks like.

```
.shadow{ text-shadow: 4px 4px 2px rgb(187, 120, 116) }
```

Border

The CSS property to change the border of an element to XYZ 30.3624, 25.2587, 19.7981 is called "border". The border property can be set on classes, ids or directly on the HTML element.

This example shows the color as border, it can be applied via the CSS property "border" or "border-color".

```
.border, #border, table{ border:4px solid rgb(187, 120, 116) }
```


If only the border color should be changed use the property `border-color`.

```
.border{ border-color:rgb(187, 120, 116) }
```

If you want to add a box shadow in that color use:

Here you see how a box with a 4 pixel `rgb(187, 120, 116)` colored shadow looks like.

```
.boxshadow{ -moz-box-shadow:4px 4px 4px  
4px rgb(187, 120, 116); -webkit-box-  
shadow:4px 4px 4px 4px rgb(187, 120, 116);  
box-shadow:4px 4px 4px 4px rgb(187, 120,  
116) }
```

Background

The CSS property to change the background color of an element to XYZ 30.3624, 25.2587, 19.7981 is called "background". The background property can be set on classes, ids or directly on the HTML element.

```
.background, #background, body{  
background: rgb(187, 120, 116) }
```

If only the background color should be changed can be used:

```
.background{ background-color: rgb(187,  
120, 116) }
```

This example shows the color as background, it is applied via the CSS property "background".

To optimize and compress your CSS code, you can use our [online CSS compressor and optimizer](#) based on csstidy. If you want to create a linear or radial gradient as background or border, check our [CSS Gradient Generator](#).

Hey! You found this booklet interesting? Support Converting Colors with the new Membership Option!

The pro membership hides all ads, plus gives you double the colors in the color bucket, and more awesome pro features!

[Learn more, Memberships starting at \\$2.50/m!](#)

**Follow me
on Twitter!**

@ConvertingColor