

Converting Colors

XYZ(30.3180, 29.9993, 23.9297)

Have a look what the booklet for
XYZ(30.3180, 29.9993, 23.9297)
contains.

XYZ(30.3167, 29.9989, 23.9312)	3
<i>Conversions</i>	4
<i>Details</i>	6
<i>Harmonies</i>	12
<i>Previews</i>	24
<i>Color Blindness Simulation</i>	28
<i>CSS Examples</i>	31

Color

**XYZ(30.3167, 29.9989,
23.9312)**

Conversions

Conversions Part 1

Format	Color
Hex	AA907E
RGB	170, 144, 126
RGB Percent	67%, 56%, 49%
CMY	0.3333, 0.4353, 0.5059
CMYK	0.00, 0.15, 0.26, 0.33
HSL	25°, 21%, 58%
HSV	25°, 26%, 67%
XYZ	30.3167, 29.9989, 23.9312
YIQ	149.7220, 21.2740, -0.0860

Conversions

Conversions Part 2

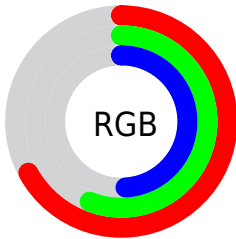
Format	Color
RYB	170, 156, 126
Decimal	11178110
CIELab	61.65, 6.91, 13.19
CIELCh	62, 14.890, 62.333
Yxy	29.9989, 0.3599, 0.3561
Android (android.graphics.Color)	4289368190 (0xFFAA907E)
YUV	149.7220, -11.6949, 17.7838
Hunter-Lab	54.7713, 2.9527, 12.4343

Details

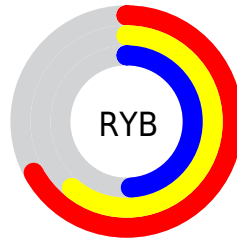
The XYZ color **30.3167, 29.9989, 23.9312** is a dark color, and the websafe version is hex **CC9999**. A complement of this color would be **27.0879, 29.7936, 42.3534**, and the grayscale version is **28.9139, 30.4197, 33.1270**.

A 20% lighter version of the original color is **59.6948, 59.8116, 51.0464**, and **12.6784, 12.3231, 8.7316** is the 20% darker color. If you saturate the color by 10%, you get **27.8576, 26.6894, 18.1517**, and if you desaturate by 10%, it is **33.0992, 33.6565, 30.7389**.

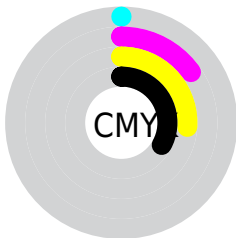
Distribution



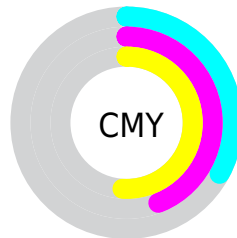
- Red (67%)
- Green (56%)
- Blue (49%)



- Red (67%)
- Yellow (61%)
- Blue (49%)



- Cyan (0%)
- Magenta (15%)
- Yellow (26%)
- Black (33%)



- Cyan (33%)
- Magenta (44%)
- Yellow (51%)

Brightness & Saturation Gradients

These gradients show how the XYZ color 30.3167, 29.9989, 23.9312 changes by changing the brightness by 10 percent. The first figure shows a shift by +10% for each color and the second figure -10%.

Similar to the brightness gradients but the following saturation gradients show a change of the XYZ color 30.3167, 29.9989, 23.9312 by changing the saturation by 10% instead.

■ 30.3167, 29.9989,
23.9312

■ 30.3167, 29.9989,
23.9312

295.2613,
301.8993, 285.7478

■ 20.2284, 19.8378,
15.0709

■ 59.5459, 59.6604,
50.8603

■ 12.6704, 12.2772,
8.7220

■ 79.4174, 79.9296,
69.7662

■ 7.2774, 6.9327,
4.4659

■ 103.2807,
104.3369, 92.8577

■ 3.6840, 3.4201,
1.8843

131.5011,
133.2668, 120.5533

■ 1.5250, 1.3548,
0.4827

164.4440,
167.1035, 153.2715

■ 0.3427, 0.1830,
0.0000

202.4748,

■ 0.0000, 0.0000,

206.2316, 191.4310

0.0000

245.9588,
251.0354, 235.4503

■ 30.3167, 29.9989,
23.9312

■ 30.3167, 29.9989,
23.9312

■ 27.8576, 26.6894,
18.1517

■ 33.0992, 33.6565,
30.7389

■ 25.7066, 23.7130,
13.3477

■ 36.2149, 37.6682,
38.6203

■ 23.8505, 21.0598,
9.4647

■ 39.6760, 42.0454,
47.6201

■ 22.2743, 18.7175,
6.4420

■ 43.4935, 46.7973,
57.7802

■ 20.9613, 16.6731,
4.2114

■ 47.6776, 51.9331,
69.1401

■ 19.8926, 14.9123,
2.6941

■ 52.2383, 57.4614,
81.7377

■ 19.0444, 13.4184,
1.7873

■ 57.1852, 63.3906,
95.6090

■ 18.7403, 12.8714,
1.4967

■ 61.3794, 69.2697,
104.7431

■ 64.1649, 74.8406,
105.6716

Harmonies

Analogous

The Analogous color harmony consists of three colors that are next to each other on the color wheel.



31.8507, 29.9989, 27.1748



30.3167, 29.9989, 23.9312



28.3584, 29.9989, 22.9399

Triad

The Triadic color harmony groups three colors that are evenly spaced from another and form a triangle on the color wheel.



30.3167, 29.9989, 23.9312



24.8774, 29.9989, 33.1094



30.5971, 29.9989, 42.7644

Complementary

The Complementary color scheme is a pair of colors which are on the opposite of each other on the color wheel.



30.3167, 29.9989, 23.9312



27.0879, 29.7936, 42.3534

Split Complementary

Split-complementary colors differ from the complementary color scheme. The scheme consists of three colors, the original color and two neighbors of the complement color.



28.6683, 29.9989, 44.8075



30.3167, 29.9989, 23.9312



25.4171, 29.9989, 38.8460

Square

The Square scheme is like the rectangle color scheme, but the four colors are evenly spaced on the color wheel.



30.3167, 29.9989, 23.9312



25.2739, 29.9989, 27.8603



26.7824, 29.9989, 43.2976



32.0178, 29.9989, 37.9898

Rectangle

The Rectangle color scheme consists of four colors that form a rectangle on the color wheel.



30.3167, 29.9989, 23.9312



27.0914, 29.9989, 23.5846



26.7824, 29.9989, 43.2976



29.9836, 29.9989, 43.8168

Sweetspot

The Sweet Spot groups the original color and five complimentary colors.



30.3175, 30.0003, 23.9318



64.3744, 66.6400, 66.6608



29.7390, 25.7483, 33.2806



14.1655, 14.6169, 14.3815



82.5889, 86.8899, 94.6231



15.4596, 16.2647, 17.7123

Same Dimension

The Same Dimension uses a secret algorithm to generate beautiful new colors.



30.3175, 30.0003, 23.9318



52.4023, 50.9442, 37.2414



33.9073, 37.1798, 25.1284



7.7738, 8.0276, 7.9290



13.8377, 9.5726, 1.1184



0.3873, 0.3342, 0.0441

Inverse Universe

The Inverse Universe completely reimagines the original color for something new.



27.0879, 29.7936, 42.3534



45.5433, 50.5003, 76.3490



23.8962, 23.4102, 41.2895



7.4863, 8.0095, 9.5698



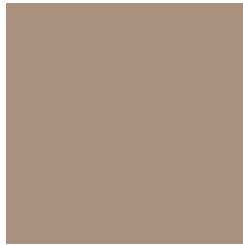
8.7767, 9.0137, 29.2527



0.2620, 0.3162, 0.7279

Previews

White Background



This preview shows how the XYZ color 30.3167, 29.9989, 23.9312 looks on a white background.

Color Contrast Check

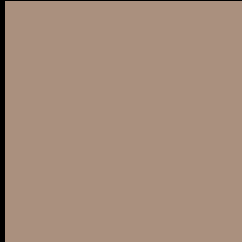
Large Text (above 18pt) WCAG AA ✓ Pass

Any Text WCAG AA × Fail

Large Text (above 18pt) WCAG AAA × Fail

Any Text WCAG AAA × Fail

Black Background



This preview shows how the XYZ color 30.3167, 29.9989, 23.9312 looks on a black background.

Color Contrast Check

Large Text (above 18pt) WCAG AA ✓ Pass

Any Text WCAG AA ✓ Pass

Large Text (above 18pt) WCAG AAA ✓ Pass

Any Text WCAG AAA ✓ Pass

If you want to check with other color combinations, try the [Color Contrast Checker](#).

XYZ 30.3167, 29.9989, 23.9312

Background



This preview shows how black text looks on a background with the XYZ color 30.3167, 29.9989, 23.9312.



This preview shows how white text looks on a background with the XYZ color 30.3167, 29.9989,

Color Blindness Simulation

Color vision deficiency is a very complex topic, and I could not describe the different causes any better than Wikipedia does, so if you want to learn more, you should check out their [article about color blindness](#).

Dichromacy



Original Color

30.3167, 29.9989, 23.9312

Protanopia

28.3540, 30.1213, 24.7417

Deuteranopia

30.6016, 29.9219, 23.9013



Tritanopia

32.1976, 29.8748, 33.3476

Trichromacy



Original Color

30.3167, 29.9989, 23.9312

Protanomaly

28.9624, 29.9768, 24.3383

Deuteranomaly

30.3829, 29.8092, 23.8911

Tritanomaly

31.4206, 29.7734, 29.6820

Monochromacy



Original Color

30.3167, 29.9989, 23.9312

Achromatopsia

28.9890, 30.4987, 33.2131

Achromatomaly

29.3023, 30.2710, 29.4978

CSS Examples

Text

The CSS property to change the color of the text to XYZ 30.3167, 29.9989, 23.9312 is called "color". The color property can be set on classes, ids or directly on the HTML element.

This example shows how text in the color `rgb(170, 144, 126)` looks like.

```
.text, #text, p{  
    color:rgb(170, 144, 126)  
}
```

If you want to add a text shadow in that color use the text-shadow property, you can generate a text shadow directly with our [CSS Text Shadow Generator](#).

Here you see how black text with a 4 pixel rgb(170, 144, 126) colored shadow looks like.

```
.shadow{ text-shadow: 4px 4px 2px rgb(170, 144, 126) }
```

Border

The CSS property to change the border of an element to XYZ 30.3167, 29.9989, 23.9312 is called "border". The border property can be set on classes, ids or directly on the HTML element.

This example shows the color as border, it can be applied via the CSS property "border" or "border-color".

```
.border, #border, table{ border:4px solid rgb(170, 144, 126) }
```


If only the border color should be changed use the property `border-color`.

```
.border{ border-color:rgb(170, 144, 126) }
```

If you want to add a box shadow in that color use:

Here you see how a box with a 4 pixel `rgb(170, 144, 126)` colored shadow looks like.

```
.boxshadow{ -moz-box-shadow:4px 4px 4px  
4px rgb(170, 144, 126); -webkit-box-  
shadow:4px 4px 4px 4px rgb(170, 144, 126);  
box-shadow:4px 4px 4px 4px rgb(170, 144,  
126) }
```

Background

The CSS property to change the background color of an element to XYZ 30.3167, 29.9989, 23.9312 is called "background". The background property can be set on classes, ids or directly on the HTML element.

```
.background, #background, body{  
background: rgb(170, 144, 126) }
```

If only the background color should be changed can be used:

```
.background{ background-color: rgb(170,  
144, 126) }
```

This example shows the color as background, it is applied via the CSS property "background".

To optimize and compress your CSS code, you can use our [online CSS compressor and optimizer](#) based on csstidy. If you want to create a linear or radial gradient as background or border, check our [CSS Gradient Generator](#).

Hey! You found this booklet interesting? Support Converting Colors with the new Membership Option!

The pro membership hides all ads, plus gives you double the colors in the color bucket, and more awesome pro features!

[Learn more, Memberships starting at \\$2.50/m!](#)

**Follow me
on Twitter!**

@ConvertingColor