

Converting Colors

XYZ(30.3552, 28.1233, 16.0015)

Have a look what the booklet for
XYZ(30.3552, 28.1233, 16.0015)
contains.

XYZ(30.3538, 28.0376, 15.8686)	3
<i>Conversions</i>	4
<i>Details</i>	6
<i>Harmonies</i>	12
<i>Previews</i>	24
<i>Color Blindness Simulation</i>	28
<i>CSS Examples</i>	31

Color

**XYZ(30.3538, 28.0376,
15.8686)**

Conversions

Conversions Part 1

Format	Color
Hex	B78664
RGB	183, 134, 100
RGB Percent	72%, 53%, 39%
CMY	0.2824, 0.4745, 0.6078
CMYK	0.00, 0.27, 0.45, 0.28
HSL	25°, 37%, 55%
HSV	25°, 45%, 72%
XYZ	30.3538, 28.0376, 15.8686
YIQ	144.7750, 40.1180, -0.1860

Conversions

Conversions Part 2

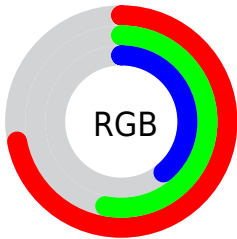
Format	Color
R_{YB}	183, 158, 100
Decimal	12027492
CIE _{Lab}	59.92, 14.51, 25.65
CIE _{LCh}	60, 29.472, 60.500
Yxy	28.0376, 0.4088, 0.3776
Android (android.graphics.Color)	4290217572 (0xFFB78664)
YUV	144.7750, -22.0741, 33.5233
Hunter-Lab	52.9505, 9.6613, 19.2969

Details

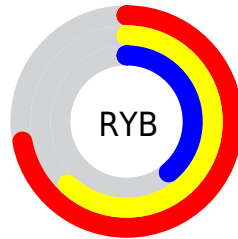
The XYZ color **30.3538, 28.0376, 15.8686** is a dark color, and the websafe version is hex **CC9966**. A complement of this color would be **24.5498, 27.6220, 48.8373**, and the grayscale version is **26.8983, 28.2991, 30.8177**.

A 20% lighter version of the original color is **59.6319, 56.4758, 37.0361**, and **12.7150, 11.1869, 4.8573** is the 20% darker color. If you saturate the color by 10%, you get **28.1481, 24.8881, 11.2435**, and if you desaturate by 10%, it is **32.9124, 31.5745, 21.5934**.

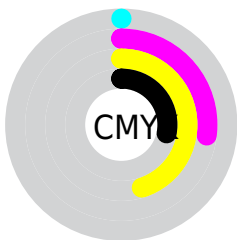
Distribution



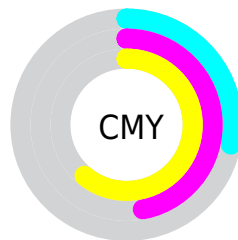
- Red (72%)
- Green (53%)
- Blue (39%)



- Red (72%)
- Yellow (62%)
- Blue (39%)



- Cyan (0%)
- Magenta (27%)
- Yellow (45%)
- Black (28%)




- Cyan (28%)
- Magenta (47%)
- Yellow (61%)

Brightness & Saturation Gradients


These gradients show how the XYZ color 30.3538, 28.0376, 15.8686 changes by changing the brightness by 10 percent. The first figure shows a shift by +10% for each color and the second figure -10%.


Similar to the brightness gradients but the following saturation gradients show a change of the XYZ color 30.3538, 28.0376, 15.8686 by changing the saturation by 10% instead.


 30.3538, 28.0376,
15.8686


 30.3538, 28.0376,
15.8686


295.4304,
292.6465, 240.3843

 20.2567, 18.3540,
9.2779


 59.6040, 56.5445,
37.1335


 12.6911, 11.2044,
4.8236


 79.4879, 76.1365,
52.6448

 7.2917, 6.2045,
2.0872


 103.3647, 99.8002,
71.9668

 3.6932, 2.9698,
0.6081

 131.5998,
127.9199, 95.5178

 1.5300, 1.1160,
0.0000

164.5586,
160.8800, 123.7165

 0.3461, 0.0000,
0.0000

202.6064,

 0.0000, 0.0000,

199.0648, 156.9815

0.0000

246.1085,
242.8589, 195.7312

■ 30.3538, 28.0376,
15.8686

■ 30.3538, 28.0376,
15.8686

■ 28.1481, 24.8881,
11.2435

■ 32.9124, 31.5745,
21.5934

■ 26.2752, 22.1074,
7.6440

■ 35.8384, 35.5083,
28.4822

■ 24.7159, 19.6812,
4.9891

■ 39.1479, 39.8533,
36.5961

■ 23.4475, 17.5925,
3.1848

■ 42.8555, 44.6217,
45.9915

■ 22.4430, 15.8220,
2.1152

■ 46.9748, 49.8252,
56.7214

■ 22.0426, 15.0958,
1.7520

■ 51.5188, 55.4750,
68.8355

■ 56.4998, 61.5819,
82.3812

■ 61.9299, 68.1562,
97.4035

■ 66.2185, 74.5674,
105.5106

Harmonies

Analogous

The Analogous color harmony consists of three colors that are next to each other on the color wheel.



33.3463, 28.0376, 21.2131



30.3538, 28.0376, 15.8686



26.5861, 28.0376, 14.2029

Triad

The Triadic color harmony groups three colors that are evenly spaced from another and form a triangle on the color wheel.



30.3538, 28.0376, 15.8686



20.0782, 28.0376, 30.7086



30.4727, 28.0376, 51.9642

Complementary

The Complementary color scheme is a pair of colors which are on the opposite of each other on the color wheel.



30.3538, 28.0376, 15.8686



24.5498, 27.6220, 48.8373

Split Complementary

Split-complementary colors differ from the complementary color scheme. The scheme consists of three colors, the original color and two neighbors of the complement color.



26.7118, 28.0376, 56.1377



30.3538, 28.0376, 15.8686



20.9142, 28.0376, 42.2351

Square

The Square scheme is like the rectangle color scheme, but the four colors are evenly spaced on the color wheel.



30.3538, 28.0376, 15.8686



20.8608, 28.0376, 21.4586



23.2584, 28.0376, 52.2213



33.4194, 28.0376, 41.8491

Rectangle

The Rectangle color scheme consists of four colors that form a rectangle on the color wheel.



30.3538, 28.0376, 15.8686



24.2061, 28.0376, 15.0009



23.2584, 28.0376, 52.2213



29.2507, 28.0376, 54.2016

Sweetspot

The Sweet Spot groups the original color and five complimentary colors.



30.3545, 28.0390, 15.8692



70.8233, 72.2978, 67.3168



29.5747, 21.3775, 31.3375



15.3438, 15.5801, 14.1225



88.6918, 93.3107, 101.6153



17.8044, 18.7317, 20.3988

Same Dimension

The Same Dimension uses a secret algorithm to generate beautiful new colors.



30.3545, 28.0390, 15.8692



50.5822, 44.8203, 20.4783



37.1004, 41.5307, 18.1178



9.2987, 9.6003, 9.4698



15.4414, 10.6592, 1.2436



0.6057, 0.4984, 0.0643

Inverse Universe

The Inverse Universe completely reimagines the original color for something new.



24.5498, 27.6220, 48.8373



38.9087, 43.9462, 86.6675



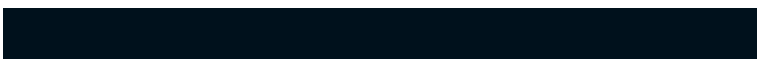
19.1973, 16.9171, 47.0532



8.9498, 9.5768, 11.4562



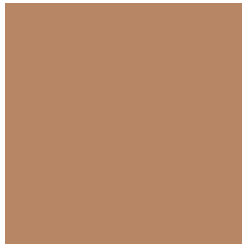
9.7745, 10.0087, 32.6698



0.4039, 0.4714, 1.1715

Previews

White Background



This preview shows how the XYZ color 30.3538, 28.0376, 15.8686 looks on a white background.

Color Contrast Check

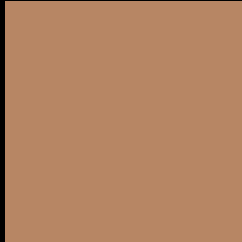
Large Text (above 18pt) WCAG AA ✓ Pass

Any Text WCAG AA × Fail

Large Text (above 18pt) WCAG AAA × Fail

Any Text WCAG AAA × Fail

Black Background



This preview shows how the XYZ color 30.3538, 28.0376, 15.8686 looks on a black background.

Color Contrast Check

Large Text (above 18pt) WCAG AA ✓ Pass

Any Text WCAG AA ✓ Pass

Large Text (above 18pt) WCAG AAA ✓ Pass

Any Text WCAG AAA × Fail

If you want to check with other color combinations, try the [Color Contrast Checker](#).

XYZ 30.3538, 28.0376, 15.8686

Background



This preview shows how black text looks on a background with the XYZ color 30.3538, 28.0376, 15.8686.



This preview shows how white text looks on a background with the XYZ color 30.3538, 28.0376,

15.8686.

Color Blindness Simulation

Color vision deficiency is a very complex topic, and I could not describe the different causes any better than Wikipedia does, so if you want to learn more, you should check out their [article about color blindness](#).

Dichromacy



Original Color

30.3538, 28.0376, 15.8686

Protanopia

26.3344, 28.3182, 17.1747

Deuteranopia

28.5742, 27.9620, 15.6956



Tritanopia

32.7602, 28.0037, 28.1047

Trichromacy



Original Color

30.3538, 28.0376, 15.8686

Protanomaly

27.6989, 28.1360, 16.8029

Deuteranomaly

29.3293, 28.1393, 15.6900

Tritanomaly

31.8256, 28.0276, 23.1345

Monochromacy



Original Color

30.3538, 28.0376, 15.8686

Achromatopsia

26.9133, 28.3149, 30.8349

Achromatomaly

27.7854, 28.0057, 24.7101

CSS Examples

Text

The CSS property to change the color of the text to XYZ 30.3538, 28.0376, 15.8686 is called "color". The color property can be set on classes, ids or directly on the HTML element.

This example shows how text in the color `rgb(183, 134, 100)` looks like.

```
.text, #text, p{  
    color:rgb(183, 134, 100)  
}
```

If you want to add a text shadow in that color use the text-shadow property, you can generate a text shadow directly with our [CSS Text Shadow Generator](#).

Here you see how black text with a 4 pixel rgb(183, 134, 100) colored shadow looks like.

```
.shadow{ text-shadow: 4px 4px 2px rgb(183, 134, 100) }
```

Border

The CSS property to change the border of an element to XYZ 30.3538, 28.0376, 15.8686 is called "border". The border property can be set on classes, ids or directly on the HTML element.

This example shows the color as border, it can be applied via the CSS property "border" or "border-color".

```
.border, #border, table{ border:4px solid rgb(183, 134, 100) }
```


If only the border color should be changed use the property `border-color`.

```
.border{ border-color:rgb(183, 134, 100) }
```

If you want to add a box shadow in that color use:

Here you see how a box with a 4 pixel `rgb(183, 134, 100)` colored shadow looks like.

```
.boxshadow{ -moz-box-shadow:4px 4px 4px  
4px rgb(183, 134, 100); -webkit-box-  
shadow:4px 4px 4px 4px rgb(183, 134, 100);  
box-shadow:4px 4px 4px 4px rgb(183, 134,  
100) }
```

Background

The CSS property to change the background color of an element to XYZ 30.3538, 28.0376, 15.8686 is called "background". The background property can be set on classes, ids or directly on the HTML element.

```
.background, #background, body{  
background: rgb(183, 134, 100) }
```

If only the background color should be changed can be used:

```
.background{ background-color: rgb(183,  
134, 100) }
```

This example shows the color as background, it is applied via the CSS property "background".

To optimize and compress your CSS code, you can use our [online CSS compressor and optimizer](#) based on csstidy. If you want to create a linear or radial gradient as background or border, check our [CSS Gradient Generator](#).

Hey! You found this booklet interesting? Support Converting Colors with the new Membership Option!

The pro membership hides all ads, plus gives you double the colors in the color bucket, and more awesome pro features!

[Learn more, Memberships starting at \\$2.50/m!](#)

**Follow me
on Twitter!**

@ConvertingColor