

# Converting Colors

XYZ(30.4971, 30.2439, 28.7446)

Have a look what the booklet for  
XYZ(30.4971, 30.2439, 28.7446)  
contains.

<b>XYZ(30.5115, 30.2219, 28.6514)</b> .....	3
<b><i>Conversions</i></b> .....	4
<b><i>Details</i></b> .....	6
<b><i>Harmonies</i></b> .....	12
<b><i>Previews</i></b> .....	24
<b><i>Color Blindness Simulation</i></b> .....	28
<b><i>CSS Examples</i></b> .....	31

# **Color**

**XYZ(30.5115, 30.2219,  
28.6514)**

# Conversions

## Conversions Part 1

Format	Color
Hex	A6918B
RGB	166, 145, 139
RGB Percent	65%, 57%, 55%
CMY	0.3490, 0.4314, 0.4549
CMYK	0.00, 0.13, 0.16, 0.35
HSL	13°, 13%, 60%
HSV	13°, 16%, 65%
XYZ	30.5115, 30.2219, 28.6514
YIQ	150.5950, 14.4420, 2.5860

# Conversions

## Conversions Part 2

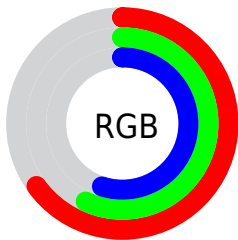
<b>Format</b>	<b>Color</b>
<b>R<sub>YB</sub></b>	166, 147, 139
Decimal	10916235
CIE <sub>Lab</sub>	61.85, 6.82, 6.05
CIE <sub>LCh</sub>	62, 9.117, 41.609
Yxy	30.2219, 0.3413, 0.3381
Android (android.graphics.Color)	4289106315 (0xFFA6918B)
YUV	150.5950, -5.7163, 13.5102
Hunter-Lab	54.9744, 2.8644, 7.5815

# Details

The XYZ color **30.5115, 30.2219, 28.6514** is a light color, and the websafe version is hex **999999**. A complement of this color would be **30.1010, 33.3830, 40.9337**, and the grayscale version is **29.2624, 30.7864, 33.5263**.

A 20% lighter version of the original color is **59.7566, 60.0248, 58.3056**, and **12.8348, 12.4831, 11.1842** is the 20% darker color. If you saturate the color by 10%, you get **27.5279, 26.0505, 22.1203**, and if you desaturate by 10%, it is **33.9051, 34.9180, 36.2286**.

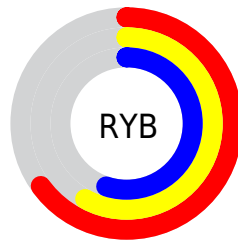
# Distribution



Red (65%)

Green (57%)

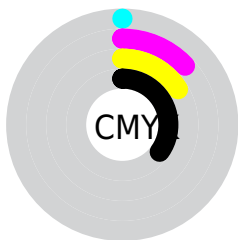
Blue (55%)



Red (65%)

Yellow (58%)

Blue (55%)

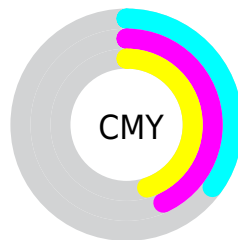


Cyan (0%)

Magenta (13%)

Yellow (16%)

Black (35%)



Cyan (35%)

Magenta (43%)

Yellow (45%)

# Brightness & Saturation Gradients

These gradients show how the XYZ color 30.5115, 30.2219, 28.6514 changes by changing the brightness by 10 percent. The first figure shows a shift by +10% for each color and the second figure -10%.

Similar to the brightness gradients but the following saturation gradients show a change of the XYZ color 30.5115, 30.2219, 28.6514 by changing the saturation by 10% instead.



■ 30.5115, 30.2219,  
28.6514

■ 30.5115, 30.2219,  
28.6514

296.1487,  
302.9374, 309.5759

■ 20.3772, 20.0071,  
18.5740

■ 59.8512, 60.0129,  
58.5583

■ 12.7793, 12.4002,  
11.1892

■ 79.7873, 80.3579,  
79.2249

■ 7.3527, 7.0168,  
6.0784

■ 103.7214,  
104.8484, 104.2583

■ 3.7319, 3.4726,  
2.8233

132.0188,  
133.8688, 134.0770

■ 1.5516, 1.3832,  
1.0051

165.0449,  
167.8035, 169.0995

■ 0.3606, 0.2043,  
0.0000

203.1650,

■ 0.0000, 0.0000,

207.0369, 209.7445

0.0000

246.7445,  
251.9534, 256.4305

■ 30.5115, 30.2219,  
28.6514

■ 30.5115, 30.2219,  
28.6514

■ 27.5279, 26.0505,  
22.1203

■ 33.9051, 34.9180,  
36.2286

■ 24.9361, 22.3815,  
16.5873

■ 37.7212, 40.1522,  
44.8932

■ 22.7202, 19.1969,  
12.0034

■ 41.9746, 45.9422,  
54.6865

■ 20.8621, 16.4762,  
8.3149

■ 46.6788, 52.3039,  
65.6474

■ 19.3422, 14.1973,  
5.4624

■ 51.8467, 59.2524,  
77.8125

■ 18.1388, 12.3361,  
3.3796

■ 57.4906, 66.8024,  
91.2171

■ 17.2278, 10.8664,  
1.9896

■ 63.5899, 74.9549,  
105.7239

■ 16.5784, 9.7575,  
1.1877

■ 67.4288, 82.6327,  
107.0036

■ 16.3847, 9.4245,  
0.9555

■ 69.5360, 86.8470,  
107.7060

# Harmonies

## Analogous

The Analogous color harmony consists of three colors that are next to each other on the color wheel.



31.0802, 30.2219, 31.5754



30.5115, 30.2219, 28.6514



29.4701, 30.2219, 26.9446

# Triad

The Triadic color harmony groups three colors that are evenly spaced from another and form a triangle on the color wheel.



30.5115, 30.2219, 28.6514



26.5599, 30.2219, 30.8359



29.1988, 30.2219, 39.9218

# Complementary

The Complementary color scheme is a pair of colors which are on the opposite of each other on the color wheel.



30.5115, 30.2219, 28.6514



30.1010, 33.3830, 40.9337

# Split Complementary

Split-complementary colors differ from the complementary color scheme. The scheme consists of three colors, the original color and two neighbors of the complement color.



27.9926, 30.2219, 39.6888



30.5115, 30.2219, 28.6514



26.4920, 30.2219, 34.2745

# Square

The Square scheme is like the rectangle color scheme, but the four colors are evenly spaced on the color wheel.



30.5115, 30.2219, 28.6514



27.1981, 30.2219, 28.1430



27.0097, 30.2219, 37.5633



30.3081, 30.2219, 38.1793



# Rectangle

The Rectangle color scheme consists of four colors that form a rectangle on the color wheel.



30.5115, 30.2219, 28.6514



28.6593, 30.2219, 26.6482



27.0097, 30.2219, 37.5633



28.7908, 30.2219, 40.0751

# Sweetspot

The Sweet Spot groups the original color and five complimentary colors.



30.5123, 30.2233, 28.6520



62.3055, 64.4344, 67.4900



31.3171, 29.1160, 37.2962



13.8429, 14.2817, 14.8777



80.6108, 84.8088, 92.3568



14.7206, 15.4872, 16.8656



# Same Dimension

The Same Dimension uses a secret algorithm to generate beautiful new colors.



30.5123, 30.2233, 28.6520



53.0640, 51.6289, 46.9070



32.6731, 34.5447, 29.3723



7.6614, 7.8028, 7.8916



12.7353, 7.3679, 0.7509



0.3459, 0.2514, 0.0303



# Inverse Universe

The Inverse Universe completely reimagines the original color for something new.



30.1010, 33.3830, 40.9337



52.1539, 58.6064, 74.0386



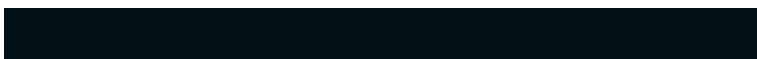
27.9102, 29.0013, 40.2034



7.6040, 8.2449, 9.6090



11.4699, 14.4000, 30.1504



0.3131, 0.4185, 0.7449



# Previews

## White Background



This preview shows how the XYZ color 30.5115, 30.2219, 28.6514 looks on a white background.

## Color Contrast Check

Large Text (above 18pt) WCAG AA × Fail

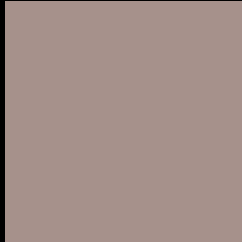
Any Text WCAG AA × Fail

Large Text (above 18pt) WCAG AAA × Fail

Any Text WCAG AAA × Fail



# Black Background



This preview shows how the XYZ color 30.5115, 30.2219, 28.6514 looks on a black background.

## Color Contrast Check

Large Text (above 18pt) WCAG AA ✓ Pass

Any Text WCAG AA ✓ Pass

Large Text (above 18pt) WCAG AAA ✓ Pass

Any Text WCAG AAA ✓ Pass

If you want to check with other color combinations, try the [Color Contrast Checker](#).

# XYZ 30.5115, 30.2219, 28.6514

## Background



This preview shows how black text looks on a background with the XYZ color 30.5115, 30.2219, 28.6514.



This preview shows how white text looks on a background with the XYZ color 30.5115, 30.2219,



# Color Blindness Simulation

Color vision deficiency is a very complex topic, and I could not describe the different causes any better than Wikipedia does, so if you want to learn more, you should check out their [article about color blindness](#).

## Dichromacy



### Original Color

30.5115, 30.2219, 28.6514

### Protanopia

28.8816, 30.2880, 29.5232

### Deuteranopia

30.7819, 30.1354, 28.6204



## Tritanopia

31.8036, 30.3028, 34.7447

# Trichromacy



## Original Color

30.5115, 30.2219, 28.6514

## Protanomaly

29.4241, 30.3424, 29.1168

## Deuteranomaly

30.5698, 30.0261, 28.6105

## Tritanomaly

31.3344, 30.3319, 32.6369

# Monochromacy



## Original Color

30.5115, 30.2219, 28.6514

## Achromatopsia

29.4150, 30.9469, 33.7012

## Achromatomaly

29.7242, 30.6694, 31.9569

# CSS Examples

## Text

The CSS property to change the color of the text to XYZ 30.5115, 30.2219, 28.6514 is called "color". The color property can be set on classes, ids or directly on the HTML element.

This example shows how text in the color `rgb(166, 145, 139)` looks like.

```
.text, #text, p{  
    color:rgb(166, 145, 139)  
}
```

If you want to add a text shadow in that color use the text-shadow property, you can generate a text shadow directly with our [CSS Text Shadow Generator](#).

Here you see how black text with a 4 pixel rgb(166, 145, 139) colored shadow looks like.

```
.shadow{ text-shadow: 4px 4px 2px rgb(166, 145, 139) }
```

## Border

The CSS property to change the border of an element to XYZ 30.5115, 30.2219, 28.6514 is called "border". The border property can be set on classes, ids or directly on the HTML element.

This example shows the color as border, it can be applied via the CSS property "border" or "border-color".

```
.border, #border, table{ border:4px solid rgb(166, 145, 139) }
```



If only the border color should be changed use the property `border-color`.

```
.border{ border-color:rgb(166, 145, 139) }
```

If you want to add a box shadow in that color use:

Here you see how a box with a 4 pixel `rgb(166, 145, 139)` colored shadow looks like.

```
.boxshadow{ -moz-box-shadow:4px 4px 4px  
4px rgb(166, 145, 139); -webkit-box-  
shadow:4px 4px 4px 4px rgb(166, 145, 139);  
box-shadow:4px 4px 4px 4px rgb(166, 145,  
139) }
```

# Background

The CSS property to change the background color of an element to XYZ 30.5115, 30.2219, 28.6514 is called "background". The background property can be set on classes, ids or directly on the HTML element.

```
.background, #background, body{  
background: rgb(166, 145, 139) }
```

If only the background color should be changed can be used:

```
.background{ background-color: rgb(166,  
145, 139) }
```

This example shows the color as background, it is applied via the CSS property "background".

To optimize and compress your CSS code, you can use our [online CSS compressor and optimizer](#) based on csstidy. If you want to create a linear or radial gradient as background or border, check our [CSS Gradient Generator](#).

Hey! You found this booklet interesting? Support Converting Colors with the new Membership Option!

The pro membership hides all ads, plus gives you double the colors in the color bucket, and more awesome pro features!

**[Learn more, Memberships starting at \\$2.50/m!](#)**

**Follow me  
on Twitter!**

@ConvertingColor