

Converting Colors

XYZ(30.5991, 29.8975, 19.2651)

Have a look what the booklet for
XYZ(30.5991, 29.8975, 19.2651)
contains.

XYZ(30.4467, 29.7238, 19.1715)	3
<i>Conversions</i>	4
<i>Details</i>	6
<i>Harmonies</i>	12
<i>Previews</i>	24
<i>Color Blindness Simulation</i>	28
<i>CSS Examples</i>	31

Color

**XYZ(30.4467, 29.7238,
19.1715)**

Conversions

Conversions Part 1

Format	Color
Hex	B08E6F
RGB	176, 142, 111
RGB Percent	69%, 56%, 44%
CMY	0.3098, 0.4431, 0.5647
CMYK	0.00, 0.19, 0.37, 0.31
HSL	29°, 29%, 56%
HSV	29°, 37%, 69%
XYZ	30.4467, 29.7238, 19.1715
YIQ	148.6320, 30.2150, -2.4330

Conversions

Conversions Part 2

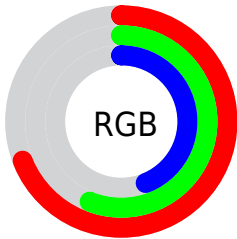
Format	Color
R_{YB}	176, 170, 111
Decimal	11570799
CIE _{Lab}	61.42, 8.43, 21.38
CIE _{LCh}	61, 22.978, 68.484
Yxy	29.7238, 0.3837, 0.3746
Android (android.graphics.Color)	4289760879 (0xFFB08E6F)
YUV	148.6320, -18.5526, 24.0017
Hunter-Lab	54.5195, 4.2750, 17.3147

Details

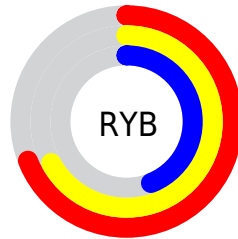
The XYZ color **30.4467, 29.7238, 19.1715** is a dark color, and the websafe version is hex **CC9966**. A complement of this color would be **24.5170, 26.7639, 44.9479**, and the grayscale version is **28.4796, 29.9628, 32.6295**.

A 20% lighter version of the original color is **59.9551, 59.4478, 42.9649**, and **12.7504, 12.1507, 6.3759** is the 20% darker color. If you saturate the color by 10%, you get **28.2582, 26.7478, 14.1229**, and if you desaturate by 10%, it is **32.9408, 33.0053, 25.2647**.

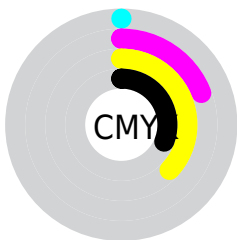
Distribution



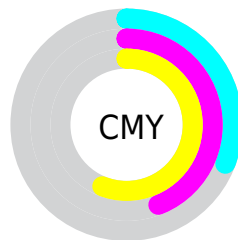
- Red (69%)
- Green (56%)
- Blue (44%)



- Red (69%)
- Yellow (67%)
- Blue (44%)



- Cyan (0%)
- Magenta (19%)
- Yellow (37%)
- Black (31%)



- Cyan (31%)
- Magenta (44%)
- Yellow (56%)

Brightness & Saturation Gradients

These gradients show how the XYZ color 30.4467, 29.7238, 19.1715 changes by changing the brightness by 10 percent. The first figure shows a shift by +10% for each color and the second figure -10%.

Similar to the brightness gradients but the following saturation gradients show a change of the XYZ color 30.4467, 29.7238, 19.1715 by changing the saturation by 10% instead.

■ 30.4467, 29.7238,
19.1715

■ 30.4467, 29.7238,
19.1715

295.8537,
300.6149, 259.8481

■ 20.3276, 19.6290,
11.6162

■ 59.7497, 59.2251,
42.8642

■ 12.7431, 12.1257,
6.3636

■ 79.6643, 79.4004,
59.8388

■ 7.3276, 6.8293,
2.9950

■ 103.5749,
103.7048, 80.7901

■ 3.7160, 3.3556,
1.0921

■ 131.8467,
132.5225, 106.1368

■ 1.5427, 1.3201,
0.0000

164.8451,
166.2379, 136.2974

■ 0.3546, 0.1567,
0.0000

202.9355,

■ 0.0000, 0.0000,

205.2356, 171.6905

0.0000

246.4833,
249.8997, 212.7345

■ 30.4467, 29.7238,
19.1715

■ 30.4467, 29.7238,
19.1715

■ 28.2582, 26.7478,
14.1229

■ 32.9408, 33.0053,
25.2647

■ 26.3590, 24.0630,
10.0567

■ 35.7513, 36.5973,
32.4560

■ 24.7346, 21.6603,
6.9071

■ 38.8909, 40.5103,
40.7975

■ 23.3681, 19.5282,
4.5992

■ 42.3712, 44.7528,
50.3372

■ 22.2401, 17.6539,
3.0461

■ 46.2030, 49.3329,
61.1206

■ 21.3240, 16.0218,
2.1237

■ 50.3967, 54.2584,
73.1908

■ 21.0708, 15.5629,
1.8934

■ 54.9620, 59.5369,
86.5885

■ 59.9087, 65.1758,
101.3530

■ 62.8391, 70.2195,
104.8495

Harmonies

Analogous

The Analogous color harmony consists of three colors that are next to each other on the color wheel.



33.0709, 29.7238, 23.0371



30.4467, 29.7238, 19.1715



27.3993, 29.7238, 18.4872

Triad

The Triadic color harmony groups three colors that are evenly spaced from another and form a triangle on the color wheel.



30.4467, 29.7238, 19.1715



22.8633, 29.7238, 34.8932



32.0414, 29.7238, 47.2909

Complementary

The Complementary color scheme is a pair of colors which are on the opposite of each other on the color wheel.



30.4467, 29.7238, 19.1715



24.5170, 26.7639, 44.9479

Split Complementary

Split-complementary colors differ from the complementary color scheme. The scheme consists of three colors, the original color and two neighbors of the complement color.



29.1214, 29.7238, 51.8710



30.4467, 29.7238, 19.1715



23.9248, 29.7238, 43.9199

Square

The Square scheme is like the rectangle color scheme, but the four colors are evenly spaced on the color wheel.



30.4467, 29.7238, 19.1715



23.1623, 29.7238, 26.6126



26.1646, 29.7238, 50.5378



34.0365, 29.7238, 38.8899

Rectangle

The Rectangle color scheme consists of four colors that form a rectangle on the color wheel.



30.4467, 29.7238, 19.1715



25.5586, 29.7238, 19.7834



26.1646, 29.7238, 50.5378



31.1274, 29.7238, 49.3911

Sweetspot

The Sweet Spot groups the original color and five complimentary colors.



30.4475, 29.7252, 19.1721



68.0345, 70.3761, 67.2854



28.7515, 22.6642, 29.9179



14.5818, 15.0493, 14.1504



84.5950, 89.0005, 96.9216



16.2198, 17.0645, 18.5832

Same Dimension

The Same Dimension uses a secret algorithm to generate beautiful new colors.



30.4475, 29.7252, 19.1721



52.0637, 49.6330, 27.4381



35.8776, 40.5855, 20.9822



8.8196, 9.1516, 8.9541



15.5180, 11.5346, 1.4085



0.5468, 0.4800, 0.0638

Inverse Universe

The Inverse Universe completely reimagines the original color for something new.



24.5170, 26.7639, 44.9479



39.7852, 43.4985, 80.7944



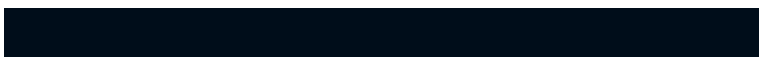
20.3161, 18.3619, 43.5476



8.3974, 8.9410, 10.7895



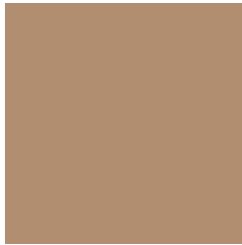
8.6200, 8.0403, 31.2346



0.3292, 0.3689, 1.0021

Previews

White Background



This preview shows how the XYZ color 30.4467, 29.7238, 19.1715 looks on a white background.

Color Contrast Check

Large Text (above 18pt) WCAG AA ✓ Pass

Any Text WCAG AA × Fail

Large Text (above 18pt) WCAG AAA × Fail

Any Text WCAG AAA × Fail

Black Background



This preview shows how the XYZ color 30.4467, 29.7238, 19.1715 looks on a black background.

Color Contrast Check

Large Text (above 18pt) WCAG AA ✓ Pass

Any Text WCAG AA ✓ Pass

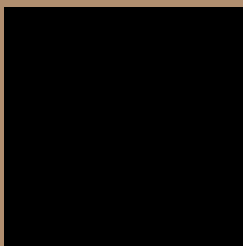
Large Text (above 18pt) WCAG AAA ✓ Pass

Any Text WCAG AAA × Fail

If you want to check with other color combinations, try the [Color Contrast Checker](#).

XYZ 30.4467, 29.7238, 19.1715

Background



This preview shows how black text looks on a background with the XYZ color 30.4467, 29.7238, 19.1715.



This preview shows how white text looks on a background with the XYZ color 30.4467, 29.7238,

Color Blindness Simulation

Color vision deficiency is a very complex topic, and I could not describe the different causes any better than Wikipedia does, so if you want to learn more, you should check out their [article about color blindness](#).

Dichromacy



Original Color

30.4467, 29.7238, 19.1715

Protanopia

27.9252, 29.7656, 20.1931

Deuteranopia

30.2214, 29.6077, 19.1609



Tritanopia

33.1133, 29.7327, 32.0107

Trichromacy



Original Color

30.4467, 29.7238, 19.1715

Protanomaly

28.7766, 29.7494, 19.8483

Deuteranomaly

30.2214, 29.6077, 19.1609

Tritanomaly

32.1962, 29.7982, 26.9764

Monochromacy



Original Color

30.4467, 29.7238, 19.1715

Achromatopsia

28.5667, 30.0544, 32.7292

Achromatomaly

28.9501, 29.6780, 27.1243

CSS Examples

Text

The CSS property to change the color of the text to XYZ 30.4467, 29.7238, 19.1715 is called "color". The color property can be set on classes, ids or directly on the HTML element.

This example shows how text in the color `rgb(176, 142, 111)` looks like.

```
.text, #text, p{  
    color:rgb(176, 142, 111)  
}
```

If you want to add a text shadow in that color use the text-shadow property, you can generate a text shadow directly with our [CSS Text Shadow Generator](#).

Here you see how black text with a 4 pixel rgb(176, 142, 111) colored shadow looks like.

```
.shadow{ text-shadow: 4px 4px 2px rgb(176, 142, 111) }
```

Border

The CSS property to change the border of an element to XYZ 30.4467, 29.7238, 19.1715 is called "border". The border property can be set on classes, ids or directly on the HTML element.

This example shows the color as border, it can be applied via the CSS property "border" or "border-color".

```
.border, #border, table{ border:4px solid rgb(176, 142, 111) }
```


If only the border color should be changed use the property `border-color`.

```
.border{ border-color:rgb(176, 142, 111) }
```

If you want to add a box shadow in that color use:

Here you see how a box with a 4 pixel `rgb(176, 142, 111)` colored shadow looks like.

```
.boxshadow{ -moz-box-shadow:4px 4px 4px  
4px rgb(176, 142, 111); -webkit-box-  
shadow:4px 4px 4px 4px rgb(176, 142, 111);  
box-shadow:4px 4px 4px 4px rgb(176, 142,  
111) }
```

Background

The CSS property to change the background color of an element to XYZ 30.4467, 29.7238, 19.1715 is called "background". The background property can be set on classes, ids or directly on the HTML element.

```
.background, #background, body{  
background: rgb(176, 142, 111) }
```

If only the background color should be changed can be used:

```
.background{ background-color: rgb(176,  
142, 111) }
```

This example shows the color as background, it is applied via the CSS property "background".

To optimize and compress your CSS code, you can use our [online CSS compressor and optimizer](#) based on csstidy. If you want to create a linear or radial gradient as background or border, check our [CSS Gradient Generator](#).

Hey! You found this booklet interesting? Support Converting Colors with the new Membership Option!

The pro membership hides all ads, plus gives you double the colors in the color bucket, and more awesome pro features!

[Learn more, Memberships starting at \\$2.50/m!](#)

**Follow me
on Twitter!**

@ConvertingColor