

# Converting Colors

XYZ(30.6162, 27.7936, 13.0587)

Have a look what the booklet for  
XYZ(30.6162, 27.7936, 13.0587)  
contains.

<b>XYZ(30.5062, 27.7719, 12.9852)</b> .....	3
<b><i>Conversions</i></b> .....	4
<b><i>Details</i></b> .....	6
<b><i>Harmonies</i></b> .....	12
<b><i>Previews</i></b> .....	24
<b><i>Color Blindness Simulation</i></b> .....	28
<b><i>CSS Examples</i></b> .....	31

# Color

**XYZ(30.5062, 27.7719,  
12.9852)**

# Conversions

## Conversions Part 1

<b>Format</b>	<b>Color</b>
Hex	BB8458
RGB	187, 132, 88
RGB Percent	73%, 52%, 35%
CMY	0.2667, 0.4823, 0.6549
CMYK	0.00, 0.29, 0.53, 0.27
HSL	27°, 42%, 54%
HSV	27°, 53%, 73%
XYZ	30.5062, 27.7719, 12.9852
YIQ	143.4290, 46.9040, -2.0240

# Conversions

## Conversions Part 2

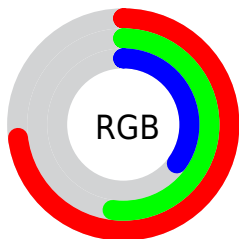
<b>Format</b>	<b>Color</b>
<a href="#">RYB</a>	<a href="#">187, 167, 88</a>
Decimal	<a href="#">12289112</a>
CIELab	<a href="#">59.68, 16.12, 32.04</a>
CIELCh	<a href="#">60, 35.868, 63.292</a>
Yxy	<a href="#">27.7719, 0.4281, 0.3897</a>
Android (android.graphics.Color)	<a href="#">4290479192</a> ( <a href="#">0xFFBB8458</a> )
YUV	<a href="#">143.4290, -27.3265, 38.2118</a>
Hunter-Lab	<a href="#">52.6991, 11.1060, 22.2801</a>

# Details

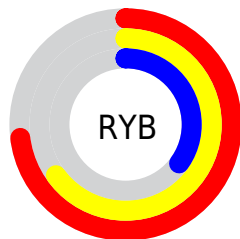
The XYZ color **30.5062, 27.7719, 12.9852** is a dark color, and the websafe version is hex **CC9966**. A complement of this color would be **22.8161, 25.3063, 50.6955**, and the grayscale version is **26.3734, 27.7469, 30.2164**.

A 20% lighter version of the original color is **59.6654, 55.9745, 32.0855**, and **12.7776, 11.0200, 3.5514** is the 20% darker color. If you saturate the color by 10%, you get **28.4896, 24.8234, 8.9693**, and if you desaturate by 10%, it is **32.8632, 31.0832, 18.0953**.

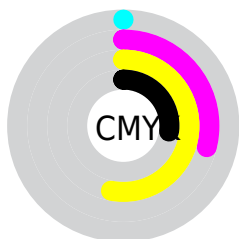
# Distribution



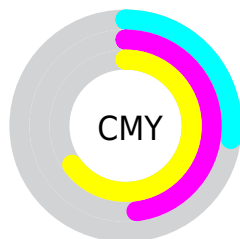
- Red (73%)
- Green (52%)
- Blue (35%)



- Red (73%)
- Yellow (65%)
- Blue (35%)



- Cyan (0%)
- Magenta (29%)
- Yellow (53%)
- Black (27%)




- Cyan (27%)
- Magenta (48%)
- Yellow (65%)

# Brightness & Saturation Gradients

These gradients show how the XYZ color 30.5062, 27.7719, 12.9852 changes by changing the brightness by 10 percent. The first figure shows a shift by +10% for each color and the second figure -10%.


Similar to the brightness gradients but the following saturation gradients show a change of the XYZ color 30.5062, 27.7719, 12.9852 by changing the saturation by 10% instead.





 30.5062, 27.7719,  
12.9852


 30.5062, 27.7719,  
12.9852


296.1246,  
291.3754, 222.0273


 20.3731, 18.1538,  
7.2877


 59.8429, 56.1201,  
31.9680


 12.7764, 11.0605,  
3.5615


 79.7773, 75.6189,  
46.0904


 7.3507, 6.1075,  
1.3880


 103.7094, 99.1801,  
63.8582

 3.7306, 2.9106,  
0.1324

 132.0047,  
127.1881, 85.6900

 1.5509, 1.0852,  
0.0000

 165.0285,  
160.0272, 112.0042

 0.3601, 0.0000,  
0.0000

203.1462,

 0.0000, 0.0000,

198.0818, 143.2195

0.0000

246.7231,  
241.7364, 179.7543

■ 30.5062, 27.7719,  
12.9852

■ 30.5062, 27.7719,  
12.9852

■ 28.4896, 24.8234,  
8.9693

■ 32.8632, 31.0832,  
18.0953

■ 26.7917, 22.2192,  
5.9628

■ 35.5762, 34.7666,  
24.3723

■ 25.3910, 19.9450,  
3.8710

■ 38.6624, 38.8360,  
31.8846

■ 24.2619, 17.9833,  
2.5800

■ 42.1371, 43.3032,  
40.6946

■ 23.5958, 16.7695,  
1.9932

■ 46.0145, 48.1798,  
50.8606

■ 50.3083, 53.4763,  
62.4374

■ 55.0313, 59.2034,  
75.4766

■ 60.1957, 65.3709,  
90.0272

■ 65.6032, 71.9044,  
105.0290

# Harmonies

## Analogous

The Analogous color harmony consists of three colors that are next to each other on the color wheel.



34.3638, 27.7719, 18.5125



30.5062, 27.7719, 12.9852



25.8995, 27.7719, 11.5507

# Triad

The Triadic color harmony groups three colors that are evenly spaced from another and form a triangle on the color wheel.



30.5062, 27.7719, 12.9852



18.6230, 27.7719, 31.6937



31.4700, 27.7719, 56.2387

# Complementary

The Complementary color scheme is a pair of colors which are on the opposite of each other on the color wheel.



30.5062, 27.7719, 12.9852



22.8161, 25.3063, 50.6955

# Split Complementary

Split-complementary colors differ from the complementary color scheme. The scheme consists of three colors, the original color and two neighbors of the complement color.



26.8996, 27.7719, 62.5909



30.5062, 27.7719, 12.9852



19.7667, 27.7719, 46.0959

# Square

The Square scheme is like the rectangle color scheme, but the four colors are evenly spaced on the color wheel.



30.5062, 27.7719, 12.9852



19.3572, 27.7719, 20.3591



22.6733, 27.7719, 58.4325



34.9635, 27.7719, 42.8878



# Rectangle

The Rectangle color scheme consists of four colors that form a rectangle on the color wheel.



30.5062, 27.7719, 12.9852



23.1009, 27.7719, 12.6310



22.6733, 27.7719, 58.4325



29.9912, 27.7719, 59.4123

# Sweetspot

The Sweet Spot groups the original color and five complimentary colors.



30.5069, 27.7733, 12.9857



73.3240, 74.8211, 67.3839



29.0250, 19.5611, 28.6717



15.8619, 16.1106, 14.1142



90.7827, 95.5105, 104.0109



18.6292, 19.5994, 21.3438



# Same Dimension

The Same Dimension uses a secret algorithm to generate beautiful new colors.



30.5069, 27.7733, 12.9857



50.3420, 43.4316, 14.7917



38.6570, 44.0735, 15.7024



9.8698, 10.2156, 10.0283



16.3276, 11.6939, 1.3966



0.7048, 0.5886, 0.0765



# Inverse Universe

The Inverse Universe completely reimagines the original color for something new.



22.8161, 25.3063, 50.6955



35.0228, 38.4785, 89.7826



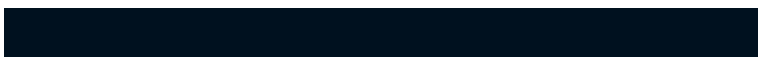
17.0506, 13.7754, 48.7737



9.4441, 10.0805, 12.1202



9.6556, 9.4230, 33.7028

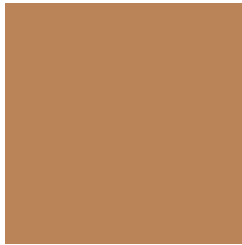


0.4425, 0.4977, 1.3416



# Previews

## White Background



This preview shows how the XYZ color 30.5062, 27.7719, 12.9852 looks on a white background.

## Color Contrast Check

Large Text (above 18pt) WCAG AA ✓ Pass

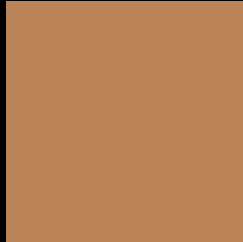
Any Text WCAG AA × Fail

Large Text (above 18pt) WCAG AAA × Fail

Any Text WCAG AAA × Fail



# Black Background



This preview shows how the XYZ color 30.5062, 27.7719, 12.9852 looks on a black background.

## Color Contrast Check

Large Text (above 18pt) WCAG AA ✓ Pass

Any Text WCAG AA ✓ Pass

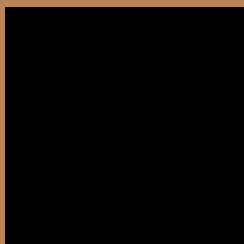
Large Text (above 18pt) WCAG AAA ✓ Pass

Any Text WCAG AAA × Fail

If you want to check with other color combinations, try the [Color Contrast Checker](#).

**XYZ 30.5062, 27.7719, 12.9852**

## **Background**



This preview shows how black text looks on a background with the XYZ color 30.5062, 27.7719, 12.9852.



This preview shows how white text looks on a background with the XYZ color 30.5062, 27.7719,



# Color Blindness Simulation

Color vision deficiency is a very complex topic, and I could not describe the different causes any better than Wikipedia does, so if you want to learn more, you should check out their [article about color blindness](#).

## Dichromacy



### Original Color

30.5062, 27.7719, 12.9852

### Protanopia

25.8537, 27.9049, 14.3795

### Deuteranopia

28.4880, 27.9790, 12.9158



## Tritanopia

33.3906, 27.7756, 26.8939

# Trichromacy



## Original Color

30.5062, 27.7719, 12.9852

## Protanomaly

27.4149, 27.8363, 13.8256

## Deuteranomaly

29.1149, 27.8801, 12.8637

## Tritanomaly

32.2841, 27.7174, 21.1012

# Monochromacy



## Original Color

30.5062, 27.7719, 12.9852

## Achromatopsia

26.1081, 27.4677, 29.9124

## Achromatomaly

27.1058, 27.2662, 22.5732

# CSS Examples

## Text

The CSS property to change the color of the text to XYZ 30.5062, 27.7719, 12.9852 is called "color". The color property can be set on classes, ids or directly on the HTML element.

This example shows how text in the color `rgb(187, 132, 88)` looks like.

```
.text, #text, p{  
    color:rgb(187, 132, 88)  
}
```

If you want to add a text shadow in that color use the text-shadow property, you can generate a text shadow directly with our [CSS Text Shadow Generator](#).

Here you see how black text with a 4 pixel rgb(187, 132, 88) colored shadow looks like.

```
.shadow{ text-shadow: 4px 4px 2px rgb(187, 132, 88) }
```

## Border

The CSS property to change the border of an element to XYZ 30.5062, 27.7719, 12.9852 is called "border". The border property can be set on classes, ids or directly on the HTML element.

This example shows the color as border, it can be applied via the CSS property "border" or "border-color".

```
.border, #border, table{ border:4px solid rgb(187, 132, 88) }
```



If only the border color should be changed use the property border-color.

```
.border{ border-color:rgb(187, 132, 88) }
```

If you want to add a box shadow in that color use:

Here you see how a box with a 4 pixel rgb(187, 132, 88) colored shadow looks like.

```
.boxshadow{ -moz-box-shadow:4px 4px 4px  
4px rgb(187, 132, 88); -webkit-box-  
shadow:4px 4px 4px 4px rgb(187, 132, 88);  
box-shadow:4px 4px 4px 4px rgb(187, 132,  
88) }
```

# Background

The CSS property to change the background color of an element to XYZ 30.5062, 27.7719, 12.9852 is called "background". The background property can be set on classes, ids or directly on the HTML element.

```
.background, #background, body{  
background: rgb(187, 132, 88) }
```

If only the background color should be changed can be used:

```
.background{ background-color: rgb(187,  
132, 88) }
```

This example shows the color as background, it is applied via the CSS property "background".

To optimize and compress your CSS code, you can use our [online CSS compressor and optimizer](#) based on csstidy. If you want to create a linear or radial gradient as background or border, check our [CSS Gradient Generator](#).

Hey! You found this booklet interesting? Support Converting Colors with the new Membership Option!

The pro membership hides all ads, plus gives you double the colors in the color bucket, and more awesome pro features!

**[Learn more, Memberships starting at \\$2.50/m!](#)**

**Follow me  
on Twitter!**

@ConvertingColor