

Converting Colors

XYZ(30.6218, 26.1756, 27.9596)

Have a look what the booklet for
XYZ(30.6218, 26.1756, 27.9596)
contains.

XYZ(30.5842, 26.1150, 27.8548)	3
<i>Conversions</i>	4
<i>Details</i>	6
<i>Harmonies</i>	12
<i>Previews</i>	24
<i>Color Blindness Simulation</i>	28
<i>CSS Examples</i>	31

Color

**XYZ(30.5842, 26.1150,
27.8548)**

Conversions

Conversions Part 1

Format	Color
Hex	B37D8B
RGB	179, 125, 139
RGB Percent	70%, 49%, 55%
CMY	0.2980, 0.5098, 0.4549
CMYK	0.00, 0.30, 0.22, 0.30
HSL	344°, 26%, 60%
HSV	344°, 30%, 70%
XYZ	30.5842, 26.1150, 27.8548
YIQ	142.7420, 27.6900, 15.8020

Conversions

Conversions Part 2

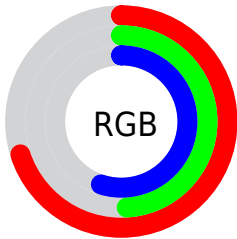
Format	Color
RYB	179, 125, 139
Decimal	11763083
CIELab	58.15, 23.03, 0.88
CIElCh	58, 23.050, 2.176
Yxy	26.1150, 0.3617, 0.3089
Android (android.graphics.Color)	4289953163 (0xFFB37D8B)
YUV	142.7420, -1.8448, 31.7983
Hunter-Lab	51.1028, 17.3993, 3.4546

Details

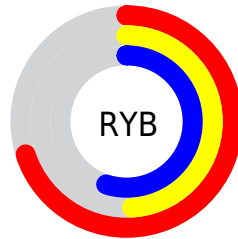
The XYZ color **30.5842, 26.1150, 27.8548** is a dark color, and the websafe version is hex **996666**. A complement of this color would be **31.3702, 39.3174, 41.5349**, and the grayscale version is **26.0056, 27.3599, 29.7949**.

A 20% lighter version of the original color is **60.0269, 53.4794, 57.0280**, and **12.7767, 10.1134, 10.7299** is the 20% darker color. If you saturate the color by 10%, you get **27.6083, 21.6206, 22.3691**, and if you desaturate by 10%, it is **34.0875, 31.4756, 34.0967**.

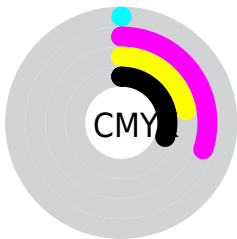
Distribution



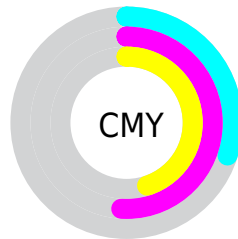
- Red (70%)
- Green (49%)
- Blue (55%)



- Red (70%)
- Yellow (49%)
- Blue (55%)



- Cyan (0%)
- Magenta (30%)
- Yellow (22%)
- Black (30%)



- Cyan (30%)
- Magenta (51%)
- Yellow (45%)

Brightness & Saturation Gradients

These gradients show how the XYZ color 30.5842, 26.1150, 27.8548 changes by changing the brightness by 10 percent. The first figure shows a shift by +10% for each color and the second figure -10%.

Similar to the brightness gradients but the following saturation gradients show a change of the XYZ color 30.5842, 26.1150, 27.8548 by changing the saturation by 10% instead.

■ 30.5842, 26.1150,
27.8548

■ 30.5842, 26.1150,
27.8548

296.4793,
283.3461, 305.6625

■ 20.4327, 16.9097,
17.9781

■ 59.9651, 53.4604,
57.2728

■ 12.8201, 10.1701,
10.7650

■ 79.9253, 72.3693,
77.6513

■ 7.3809, 5.5119,
5.7969

■ 103.8857, 95.2815,
102.3675

■ 3.7499, 2.5506,
2.6552

132.2118,
122.5814, 131.8399

■ 1.5616, 0.9019,
0.9207

165.2688,
154.6535, 166.4870

■ 0.3672, 0.0000,
0.0000

203.4222,

■ 0.0000, 0.0000,

191.8820, 206.7275

0.0000

247.0372,
234.6514, 252.9798

■ 30.5842, 26.1150,
27.8548

■ 30.5842, 26.1150,
27.8548

■ 27.6083, 21.6206,
22.3691

■ 34.0875, 31.4756,
34.0967

■ 25.1314, 17.9432,
17.6087

■ 38.1403, 37.7409,
41.1210

■ 23.1258, 15.0341,
13.5427


■ 42.7660, 44.9515,
48.9544

■ 21.5602, 12.8382,
10.1374


■ 47.9861, 53.1445,
57.6220


■ 20.3991, 11.2928,
7.3559


■ 53.8209, 62.3551,
67.1477

 19.6013, 10.3240,
5.1574

 60.2897, 72.6165,
77.5545

 19.0915, 9.7842,
3.5085

 67.4111, 83.9606,
88.8644

 70.8444, 87.7013,
99.6460

 72.4005, 88.3237,
107.8400

Harmonies

Analogous

The Analogous color harmony consists of three colors that are next to each other on the color wheel.



29.8805, 26.1150, 36.2350



30.5842, 26.1150, 27.8548



29.6503, 26.1150, 21.0055

Triad

The Triadic color harmony groups three colors that are evenly spaced from another and form a triangle on the color wheel.



30.5842, 26.1150, 27.8548



22.0701, 26.1150, 17.3020



22.3982, 26.1150, 44.3215

Complementary

The Complementary color scheme is a pair of colors which are on the opposite of each other on the color wheel.



30.5842, 26.1150, 27.8548



31.3702, 39.3174, 41.5349

Split Complementary

Split-complementary colors differ from the complementary color scheme. The scheme consists of three colors, the original color and two neighbors of the complement color.



20.5477, 26.1150, 37.4369



30.5842, 26.1150, 27.8548



20.3684, 26.1150, 21.8430

Square

The Square scheme is like the rectangle color scheme, but the four colors are evenly spaced on the color wheel.



30.5842, 26.1150, 27.8548



24.6182, 26.1150, 15.6681



19.8324, 26.1150, 29.0228



25.0260, 26.1150, 46.7399

Rectangle

The Rectangle color scheme consists of four colors that form a rectangle on the color wheel.



30.5842, 26.1150, 27.8548



28.2627, 26.1150, 17.9338



19.8324, 26.1150, 29.0228



21.6716, 26.1150, 42.3964

Sweetspot

The Sweet Spot groups the original color and five complimentary colors.



30.5849, 26.1162, 27.8553



69.1000, 68.8229, 75.0011



30.9052, 25.8797, 46.0144



15.0599, 14.8607, 16.1900



86.6293, 91.1408, 99.2523



17.0014, 17.8868, 19.4787

Same Dimension

The Same Dimension uses a secret algorithm to generate beautiful new colors.



30.5849, 26.1162, 27.8553



51.2368, 41.4135, 43.4057



31.3241, 29.1279, 23.3748



8.5838, 8.5402, 9.3066



13.5141, 6.9232, 2.6013



0.4496, 0.2276, 0.2100

Inverse Universe

The Inverse Universe completely reimagines the original color for something new.



30.5849, 26.1162, 27.8553



51.2368, 41.4135, 43.4057



30.3041, 35.0336, 47.8130



8.5838, 8.5402, 9.3066



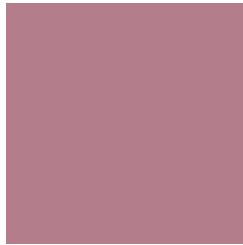
13.5141, 6.9232, 2.6013



0.4496, 0.2276, 0.2100

Previews

White Background



This preview shows how the XYZ color 30.5842, 26.1150, 27.8548 looks on a white background.

Color Contrast Check

Large Text (above 18pt) WCAG AA ✓ Pass

Any Text WCAG AA ✗ Fail

Large Text (above 18pt) WCAG AAA ✗ Fail

Any Text WCAG AAA ✗ Fail

Black Background



This preview shows how the XYZ color 30.5842, 26.1150, 27.8548 looks on a black background.

Color Contrast Check

Large Text (above 18pt) WCAG AA ✓ Pass

Any Text WCAG AA ✓ Pass

Large Text (above 18pt) WCAG AAA ✓ Pass

Any Text WCAG AAA × Fail

If you want to check with other color combinations, try the [Color Contrast Checker](#).

XYZ 30.5842, 26.1150, 27.8548

Background



This preview shows how black text looks on a background with the XYZ color 30.5842, 26.1150, 27.8548.



This preview shows how white text looks on a background with the XYZ color 30.5842, 26.1150,

Color Blindness Simulation

Color vision deficiency is a very complex topic, and I could not describe the different causes any better than Wikipedia does, so if you want to learn more, you should check out their [article about color blindness](#).

Dichromacy



Original Color

30.5842, 26.1150, 27.8548

Protanopia

25.3143, 26.1473, 31.3165

Deuteranopia

26.6969, 26.1027, 27.2981



Tritanopia

30.4244, 26.2547, 26.3858

Trichromacy



Original Color

30.5842, 26.1150, 27.8548

Protanomaly

26.8856, 25.9338, 29.9743

Deuteranomaly

28.0136, 25.9601, 27.5791

Tritanomaly

30.4952, 26.2830, 26.7584

Monochromacy



Original Color

30.5842, 26.1150, 27.8548

Achromatopsia

26.1081, 27.4677, 29.9124

Achromatomaly

27.3969, 26.6292, 29.2872

CSS Examples

Text

The CSS property to change the color of the text to XYZ 30.5842, 26.1150, 27.8548 is called "color". The color property can be set on classes, ids or directly on the HTML element.

This example shows how text in the color `rgb(179, 125, 139)` looks like.

```
.text, #text, p{  
    color:rgb(179, 125, 139)  
}
```

If you want to add a text shadow in that color use the text-shadow property, you can generate a text shadow directly with our [CSS Text Shadow Generator](#).

Here you see how black text with a 4 pixel rgb(179, 125, 139) colored shadow looks like.

```
.shadow{ text-shadow: 4px 4px 2px rgb(179, 125, 139) }
```

Border

The CSS property to change the border of an element to XYZ 30.5842, 26.1150, 27.8548 is called "border". The border property can be set on classes, ids or directly on the HTML element.

This example shows the color as border, it can be applied via the CSS property "border" or "border-color".

```
.border, #border, table{ border:4px solid rgb(179, 125, 139) }
```


If only the border color should be changed use the property `border-color`.

```
.border{ border-color:rgb(179, 125, 139) }
```

If you want to add a box shadow in that color use:

Here you see how a box with a 4 pixel `rgb(179, 125, 139)` colored shadow looks like.

```
.boxshadow{ -moz-box-shadow:4px 4px 4px  
4px rgb(179, 125, 139); -webkit-box-  
shadow:4px 4px 4px 4px rgb(179, 125, 139);  
box-shadow:4px 4px 4px 4px rgb(179, 125,  
139) }
```

Background

The CSS property to change the background color of an element to XYZ 30.5842, 26.1150, 27.8548 is called "background". The background property can be set on classes, ids or directly on the HTML element.

```
.background, #background, body{  
background: rgb(179, 125, 139) }
```

If only the background color should be changed can be used:

```
.background{ background-color: rgb(179,  
125, 139) }
```

This example shows the color as background, it is applied via the CSS property "background".

To optimize and compress your CSS code, you can use our [online CSS compressor and optimizer](#) based on csstidy. If you want to create a linear or radial gradient as background or border, check our [CSS Gradient Generator](#).

Hey! You found this booklet interesting? Support Converting Colors with the new Membership Option!

The pro membership hides all ads, plus gives you double the colors in the color bucket, and more awesome pro features!

[Learn more, Memberships starting at \\$2.50/m!](#)

**Follow me
on Twitter!**

@ConvertingColor