

Converting Colors

XYZ(30.6540, 30.0198, 20.7018)

Have a look what the booklet for
XYZ(30.6540, 30.0198, 20.7018)
contains.

XYZ(30.6540, 30.0198, 20.7018)	3
<i>Conversions</i>	4
<i>Details</i>	6
<i>Harmonies</i>	12
<i>Previews</i>	24
<i>Color Blindness Simulation</i>	28
<i>CSS Examples</i>	31

Color

**XYZ(30.6540, 30.0198,
20.7018)**

Conversions

Conversions Part 1

Format	Color
Hex	AF8F74
RGB	175, 143, 116
RGB Percent	69%, 56%, 45%
CMY	0.3137, 0.4392, 0.5451
CMYK	0.00, 0.18, 0.34, 0.31
HSL	27°, 27%, 57%
HSV	27°, 34%, 69%
XYZ	30.6540, 30.0198, 20.7018
YIQ	149.4900, 27.7390, -1.6130

Conversions

Conversions Part 2

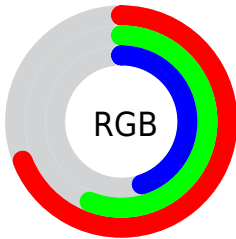
Format	Color
RYB	175, 166, 116
Decimal	11505524
CIELab	61.67, 8.10, 18.91
CIELCh	62, 20.573, 66.819
Yxy	30.0198, 0.3767, 0.3689
Android (android.graphics.Color)	4289695604 (0xFFAF8F74)
YUV	149.4900, -16.5106, 22.3723
Hunter-Lab	54.7903, 3.9838, 15.9513

Details

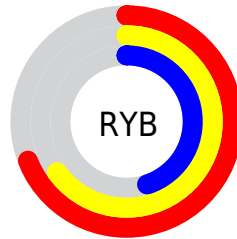
The XYZ color **30.6540, 30.0198, 20.7018** is a dark color, and the websafe version is hex **CC9966**. A complement of this color would be **25.5299, 27.9871, 44.6139**, and the grayscale version is **28.8335, 30.3351, 33.0349**.

A 20% lighter version of the original color is **59.9891, 59.7486, 45.4166**, and **12.8429, 12.3110, 7.1682** is the 20% darker color. If you saturate the color by 10%, you get **28.3656, 26.9215, 15.3811**, and if you desaturate by 10%, it is **33.2563, 33.4388, 27.0739**.

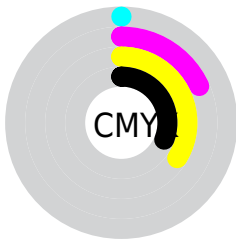
Distribution



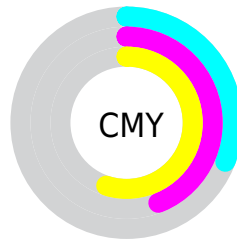
- Red (69%)
- Green (56%)
- Blue (45%)



- Red (69%)
- Yellow (65%)
- Blue (45%)



- Cyan (0%)
- Magenta (18%)
- Yellow (34%)
- Black (31%)





- Cyan (31%)
- Magenta (44%)
- Yellow (55%)

Brightness & Saturation Gradients


These gradients show how the XYZ color 30.6540, 30.0198, 20.7018 changes by changing the brightness by 10 percent. The first figure shows a shift by +10% for each color and the second figure -10%.


Similar to the brightness gradients but the following saturation gradients show a change of the XYZ color 30.6540, 30.0198, 20.7018 by changing the saturation by 10% instead.


 30.6540, 30.0198,
20.7018


 30.6540, 30.0198,
20.7018


296.7965,
301.9967, 268.4182

 20.4861, 19.8536,
12.7171


 60.0745, 59.6935,
45.4650

 12.8592, 12.2887,
7.1056


 80.0577, 79.9698,
63.0807

 7.4080, 6.9406,
3.4488


 104.0434,
104.3849, 84.7437

 3.7671, 3.4250,
1.3281

132.3970,
133.3233, 110.8726

 1.5712, 1.3574,
0.0847

165.4837,
167.1692, 141.8859

 0.3736, 0.1850,
0.0000

203.6690,

 0.0000, 0.0000,

206.3072, 178.2023

0.0000

247.3181,
251.1216, 220.2402

■ 30.6540, 30.0198,
20.7018

■ 30.6540, 30.0198,
20.7018

■ 28.3656, 26.9215,
15.3811

■ 33.2563, 33.4388,
27.0739

■ 26.3750, 24.1293,
11.0522

■ 36.1829, 37.1838,
34.5489

■ 24.6681, 21.6337,
7.6520

■ 39.4468, 41.2657,
43.1772

■ 23.2283, 19.4231,
5.1097

■ 43.0592, 45.6931,
53.0053

■ 22.0370, 17.4845,
3.3437

■ 47.0310, 50.4747,
64.0775

■ 21.0723, 15.8036,
2.2564

■ 51.3725, 55.6184,
76.4354

■ 20.5549, 14.8653,
1.7859

■ 56.0935, 61.1323,
90.1189

■ 61.0418, 66.9593,
104.3149

■ 63.5878, 72.0511,
105.1636

Harmonies

Analogous

The Analogous color harmony consists of three colors that are next to each other on the color wheel.



32.9544, 30.0198, 24.4642



30.6540, 30.0198, 20.7018



27.9129, 30.0198, 19.8941

Triad

The Triadic color harmony groups three colors that are evenly spaced from another and form a triangle on the color wheel.



30.6540, 30.0198, 20.7018



23.6222, 30.0198, 34.5079



31.8027, 30.0198, 46.2901

Complementary

The Complementary color scheme is a pair of colors which are on the opposite of each other on the color wheel.



30.6540, 30.0198, 20.7018



25.5299, 27.9871, 44.6139

Split Complementary

Split-complementary colors differ from the complementary color scheme. The scheme consists of three colors, the original color and two neighbors of the complement color.



29.1620, 30.0198, 50.0422



30.6540, 30.0198, 20.7018



24.5258, 30.0198, 42.5711

Square

The Square scheme is like the rectangle color scheme, but the four colors are evenly spaced on the color wheel.



30.6540, 30.0198, 20.7018



23.9655, 30.0198, 27.1078



26.5120, 30.0198, 48.5825



33.6466, 30.0198, 38.9823

Rectangle

The Rectangle color scheme consists of four colors that form a rectangle on the color wheel.



30.6540, 30.0198, 20.7018



26.2249, 30.0198, 21.0013



26.5120, 30.0198, 48.5825



30.9725, 30.0198, 48.0581

Sweetspot

The Sweet Spot groups the original color and five complimentary colors.



30.6548, 30.0212, 20.7024



66.8019, 69.1135, 67.1066



29.3058, 23.7575, 31.2454



14.6726, 15.1415, 14.4561



84.5950, 89.0005, 96.9216



16.2198, 17.0645, 18.5832

Same Dimension

The Same Dimension uses a secret algorithm to generate beautiful new colors.



30.6548, 30.0212, 20.7024



51.9834, 49.8343, 30.2351



35.5937, 39.8990, 22.3487



8.2959, 8.5966, 8.4354



14.7801, 10.7658, 1.2990



0.4663, 0.4097, 0.0545

Inverse Universe

The Inverse Universe completely reimagines the original color for something new.



25.5299, 27.9871, 44.6139



41.4721, 45.6577, 79.2639



21.5315, 19.9903, 43.2811



7.9252, 8.4497, 10.1660



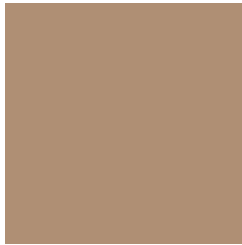
8.5278, 8.1895, 30.1758



0.2911, 0.3356, 0.8574

Previews

White Background



This preview shows how the XYZ color 30.6540, 30.0198, 20.7018 looks on a white background.

Color Contrast Check

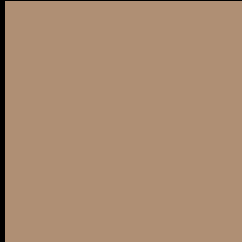
Large Text (above 18pt) WCAG AA ✓ Pass

Any Text WCAG AA × Fail

Large Text (above 18pt) WCAG AAA × Fail

Any Text WCAG AAA × Fail

Black Background



This preview shows how the XYZ color 30.6540, 30.0198, 20.7018 looks on a black background.

Color Contrast Check

Large Text (above 18pt) WCAG AA ✓ Pass

Any Text WCAG AA ✓ Pass

Large Text (above 18pt) WCAG AAA ✓ Pass

Any Text WCAG AAA ✓ Pass

If you want to check with other color combinations, try the [Color Contrast Checker](#).

XYZ 30.6540, 30.0198, 20.7018

Background



This preview shows how black text looks on a background with the XYZ color 30.6540, 30.0198, 20.7018.



This preview shows how white text looks on a background with the XYZ color 30.6540, 30.0198,

Color Blindness Simulation

Color vision deficiency is a very complex topic, and I could not describe the different causes any better than Wikipedia does, so if you want to learn more, you should check out their [article about color blindness](#).

Dichromacy



Original Color

30.6540, 30.0198, 20.7018

Protanopia

28.1778, 30.0959, 21.7767

Deuteranopia

30.6540, 30.0198, 20.7018



Tritanopia

33.1037, 29.9306, 32.4662

Trichromacy



Original Color

30.6540, 30.0198, 20.7018

Protanomaly

29.0136, 30.0680, 21.4141

Deuteranomaly

30.6540, 30.0198, 20.7018

Tritanomaly

32.2535, 30.0273, 27.7628

Monochromacy



Original Color

30.6540, 30.0198, 20.7018

Achromatopsia

28.5667, 30.0544, 32.7292

Achromatomaly

29.0496, 29.9427, 27.9153

CSS Examples

Text

The CSS property to change the color of the text to XYZ 30.6540, 30.0198, 20.7018 is called "color". The color property can be set on classes, ids or directly on the HTML element.

This example shows how text in the color `rgb(175, 143, 116)` looks like.

```
.text, #text, p{  
    color:rgb(175, 143, 116)  
}
```

If you want to add a text shadow in that color use the text-shadow property, you can generate a text shadow directly with our [CSS Text Shadow Generator](#).

Here you see how black text with a 4 pixel rgb(175, 143, 116) colored shadow looks like.

```
.shadow{ text-shadow: 4px 4px 2px rgb(175, 143, 116) }
```

Border

The CSS property to change the border of an element to XYZ 30.6540, 30.0198, 20.7018 is called "border". The border property can be set on classes, ids or directly on the HTML element.

This example shows the color as border, it can be applied via the CSS property "border" or "border-color".

```
.border, #border, table{ border:4px solid rgb(175, 143, 116) }
```


If only the border color should be changed use the property `border-color`.

```
.border{ border-color:rgb(175, 143, 116) }
```

If you want to add a box shadow in that color use:

Here you see how a box with a 4 pixel `rgb(175, 143, 116)` colored shadow looks like.

```
.boxshadow{ -moz-box-shadow:4px 4px 4px  
4px rgb(175, 143, 116); -webkit-box-  
shadow:4px 4px 4px 4px rgb(175, 143, 116);  
box-shadow:4px 4px 4px 4px rgb(175, 143,  
116) }
```

Background

The CSS property to change the background color of an element to XYZ 30.6540, 30.0198, 20.7018 is called "background". The background property can be set on classes, ids or directly on the HTML element.

```
.background, #background, body{  
background: rgb(175, 143, 116) }
```

If only the background color should be changed can be used:

```
.background{ background-color: rgb(175,  
143, 116) }
```

This example shows the color as background, it is applied via the CSS property "background".

To optimize and compress your CSS code, you can use our [online CSS compressor and optimizer](#) based on csstidy. If you want to create a linear or radial gradient as background or border, check our [CSS Gradient Generator](#).

Hey! You found this booklet interesting? Support Converting Colors with the new Membership Option!

The pro membership hides all ads, plus gives you double the colors in the color bucket, and more awesome pro features!

[Learn more, Memberships starting at \\$2.50/m!](#)

**Follow me
on Twitter!**

@ConvertingColor