

Converting Colors

XYZ(30.7075, 28.3690, 27.8495)

Have a look what the booklet for
XYZ(30.7075, 28.3690, 27.8495)
contains.

XYZ(30.6252, 28.3275, 27.8984)	3
<i>Conversions</i>	4
<i>Details</i>	6
<i>Harmonies</i>	12
<i>Previews</i>	24
<i>Color Blindness Simulation</i>	28
<i>CSS Examples</i>	31

Color

**XYZ(30.6252, 28.3275,
27.8984)**

Conversions

Conversions Part 1

Format	Color
Hex	AD888A
RGB	173, 136, 138
RGB Percent	68%, 53%, 54%
CMY	0.3216, 0.4667, 0.4588
CMYK	0.00, 0.21, 0.20, 0.32
HSL	357°, 18%, 61%
HSV	357°, 21%, 68%
XYZ	30.6252, 28.3275, 27.8984
YIQ	147.2910, 21.4100, 8.4660

Conversions

Conversions Part 2

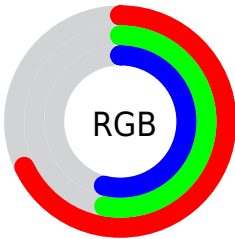
Format	Color
R _Y B	173, 136, 138
Decimal	11372682
CIE Lab	60.18, 14.40, 4.32
CIE LCh	60, 15.038, 16.701
Yxy	28.3275, 0.3526, 0.3262
Android (android.graphics.Color)	4289562762 (0xFFAD888A)
YUV	147.2910, -4.5805, 22.5468
Hunter-Lab	53.2236, 9.5688, 6.1783

Details

The XYZ color **30.6252, 28.3275, 27.8984** is a dark color, and the websafe version is hex **CC9999**. A complement of this color would be **32.4487, 38.0624, 44.1665**, and the grayscale version is **27.8664, 29.3176, 31.9269**.

A 20% lighter version of the original color is **59.9147, 56.8148, 57.0987**, and **12.8350, 11.3532, 10.7474** is the 20% darker color. If you saturate the color by 10%, you get **27.2856, 23.4037, 21.3732**, and if you desaturate by 10%, it is **34.5382, 34.1118, 35.4964**.

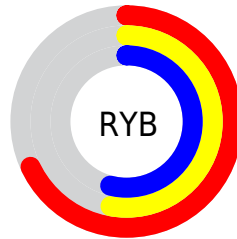
Distribution



Red (68%)

Green (53%)

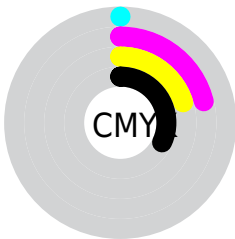
Blue (54%)



Red (68%)

Yellow (53%)

Blue (54%)

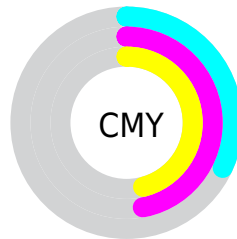


Cyan (0%)

Magenta (21%)

Yellow (20%)

Black (32%)



Cyan (32%)

Magenta (47%)

Yellow (46%)

Brightness & Saturation Gradients

These gradients show how the XYZ color 30.6252, 28.3275, 27.8984 changes by changing the brightness by 10 percent. The first figure shows a shift by +10% for each color and the second figure -10%.

Similar to the brightness gradients but the following saturation gradients show a change of the XYZ color 30.6252, 28.3275, 27.8984 by changing the saturation by 10% instead.

■ 30.6252, 28.3275,
27.8984

■ 30.6252, 28.3275,
27.8984

296.6657,
294.0285, 305.8778

■ 20.4640, 18.5727,
18.0107

■ 60.0294, 57.0069,
57.3433

■ 12.8430, 11.3619,
10.7882

■ 80.0031, 76.7002,
77.7377

■ 7.3968, 6.3108,
5.8122

■ 103.9784,
100.4752, 102.4713

■ 3.7600, 3.0350,
2.6643

132.3206,
128.7163, 131.9628

■ 1.5673, 1.1500,
0.9254

165.3951,
161.8077, 166.6306

■ 0.3709, 0.0203,
0.0000

203.5672,

■ 0.0000, 0.0000,

200.1340, 206.8933

0.0000

247.2023,
244.0795, 253.1696

■ 30.6252, 28.3275,
27.8984

■ 30.6252, 28.3275,
27.8984

■ 27.2856, 23.4037,
21.3732

■ 34.5382, 34.1118,
35.4964

■ 24.4904, 19.2958,
15.8707

■ 39.0473, 40.7910,
44.2105

■ 22.2112, 15.9607,
11.3397

■ 44.1768, 48.4020,
54.0839

■ 20.4165, 13.3502,
7.7237

■ 49.9491, 56.9788,
65.1570

■ 19.0712, 11.4105,
4.9605

■ 56.3853, 66.5537,
77.4682

■ 18.1354, 10.0802,
2.9798

■ 63.5055, 77.1571,
91.0540

■ 17.5623, 9.2869,
1.7007

■ 70.6541, 87.4685,
105.7248

■ 17.2849, 8.9048,
1.0759

■ 71.0437, 87.6243,
107.7765

Harmonies

Analogous

The Analogous color harmony consists of three colors that are next to each other on the color wheel.



30.6872, 28.3275, 33.3455



30.6252, 28.3275, 27.8984



29.5418, 28.3275, 23.7583

Triad

The Triadic color harmony groups three colors that are evenly spaced from another and form a triangle on the color wheel.



30.6252, 28.3275, 27.8984



24.3210, 28.3275, 24.1340



26.0825, 28.3275, 42.3451

Complementary

The Complementary color scheme is a pair of colors which are on the opposite of each other on the color wheel.



30.6252, 28.3275, 27.8984



32.4487, 38.0624, 44.1665

Split Complementary

Split-complementary colors differ from the complementary color scheme. The scheme consists of three colors, the original color and two neighbors of the complement color.



24.4664, 28.3275, 39.2143



30.6252, 28.3275, 27.8984



23.4826, 28.3275, 28.4705

Square

The Square scheme is like the rectangle color scheme, but the four colors are evenly spaced on the color wheel.



30.6252, 28.3275, 27.8984



25.8753, 28.3275, 21.7688



23.5345, 28.3275, 33.9896



28.0015, 28.3275, 42.1443

Rectangle

The Rectangle color scheme consists of four colors that form a rectangle on the color wheel.



30.6252, 28.3275, 27.8984



28.4142, 28.3275, 22.1010



23.5345, 28.3275, 33.9896



25.4877, 28.3275, 41.6330

Sweetspot

The Sweet Spot groups the original color and five complimentary colors.



30.6260, 28.3288, 27.8990



65.9841, 67.2045, 71.5585



33.0409, 29.2323, 43.4364



14.2308, 14.4435, 15.3405



82.5889, 86.8899, 94.6231



15.4596, 16.2647, 17.7123

Same Dimension

The Same Dimension uses a secret algorithm to generate beautiful new colors.



30.6260, 28.3288, 27.8990



51.6917, 46.0764, 43.8064



32.9120, 33.1301, 27.9542



8.0221, 8.0221, 8.4273



12.7051, 6.5446, 0.8268



0.3590, 0.1843, 0.0522

Inverse Universe

The Inverse Universe completely reimagines the original color for something new.



30.6260, 28.3288, 27.8990



51.6917, 46.0764, 43.8064



29.7486, 32.3551, 44.2127



8.0221, 8.0221, 8.4273



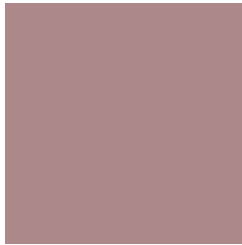
12.7051, 6.5446, 0.8268



0.3590, 0.1843, 0.0522

Previews

White Background



This preview shows how the XYZ color 30.6252, 28.3275, 27.8984 looks on a white background.

Color Contrast Check

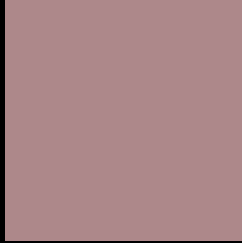
Large Text (above 18pt) WCAG AA ✓ Pass

Any Text WCAG AA × Fail

Large Text (above 18pt) WCAG AAA × Fail

Any Text WCAG AAA × Fail

Black Background



This preview shows how the XYZ color 30.6252, 28.3275, 27.8984 looks on a black background.

Color Contrast Check

Large Text (above 18pt) WCAG AA ✓ Pass

Any Text WCAG AA ✓ Pass

Large Text (above 18pt) WCAG AAA ✓ Pass

Any Text WCAG AAA × Fail

If you want to check with other color combinations, try the [Color Contrast Checker](#).

XYZ 30.6252, 28.3275, 27.8984

Background



This preview shows how black text looks on a background with the XYZ color 30.6252, 28.3275, 27.8984.



This preview shows how white text looks on a background with the XYZ color 30.6252, 28.3275,

Color Blindness Simulation

Color vision deficiency is a very complex topic, and I could not describe the different causes any better than Wikipedia does, so if you want to learn more, you should check out their [article about color blindness](#).

Dichromacy



Original Color

30.6252, 28.3275, 27.8984

Protanopia

27.2961, 28.5299, 30.0548

Deuteranopia

28.7937, 28.2437, 27.6009



Tritanopia

31.2304, 28.3710, 30.6182

Trichromacy



Original Color

30.6252, 28.3275, 27.8984

Protanomaly

28.3853, 28.4372, 29.1922

Deuteranomaly

29.4739, 28.3784, 27.5910

Tritanomaly

31.0020, 28.2796, 29.4157

Monochromacy



Original Color

30.6252, 28.3275, 27.8984

Achromatopsia

27.7328, 29.1771, 31.7738

Achromatomaly

28.5668, 28.7265, 30.4247

CSS Examples

Text

The CSS property to change the color of the text to XYZ 30.6252, 28.3275, 27.8984 is called "color". The color property can be set on classes, ids or directly on the HTML element.

This example shows how text in the color `rgb(173, 136, 138)` looks like.

```
.text, #text, p{  
    color:rgb(173, 136, 138)  
}
```

If you want to add a text shadow in that color use the text-shadow property, you can generate a text shadow directly with our [CSS Text Shadow Generator](#).

Here you see how black text with a 4 pixel rgb(173, 136, 138) colored shadow looks like.

```
.shadow{ text-shadow: 4px 4px 2px rgb(173, 136, 138) }
```

Border

The CSS property to change the border of an element to XYZ 30.6252, 28.3275, 27.8984 is called "border". The border property can be set on classes, ids or directly on the HTML element.

This example shows the color as border, it can be applied via the CSS property "border" or "border-color".

```
.border, #border, table{ border:4px solid rgb(173, 136, 138) }
```


If only the border color should be changed use the property `border-color`.

```
.border{ border-color:rgb(173, 136, 138) }
```

If you want to add a box shadow in that color use:

Here you see how a box with a 4 pixel `rgb(173, 136, 138)` colored shadow looks like.

```
.boxshadow{ -moz-box-shadow:4px 4px 4px  
4px rgb(173, 136, 138); -webkit-box-  
shadow:4px 4px 4px 4px rgb(173, 136, 138);  
box-shadow:4px 4px 4px 4px rgb(173, 136,  
138) }
```

Background

The CSS property to change the background color of an element to XYZ 30.6252, 28.3275, 27.8984 is called "background". The background property can be set on classes, ids or directly on the HTML element.

```
.background, #background, body{  
background: rgb(173, 136, 138) }
```

If only the background color should be changed can be used:

```
.background{ background-color: rgb(173,  
136, 138) }
```

This example shows the color as background, it is applied via the CSS property "background".

To optimize and compress your CSS code, you can use our [online CSS compressor and optimizer](#) based on csstidy. If you want to create a linear or radial gradient as background or border, check our [CSS Gradient Generator](#).

Hey! You found this booklet interesting? Support Converting Colors with the new Membership Option!

The pro membership hides all ads, plus gives you double the colors in the color bucket, and more awesome pro features!

[Learn more, Memberships starting at \\$2.50/m!](#)

**Follow me
on Twitter!**

@ConvertingColor