

Converting Colors

XYZ(30.7362, 28.5401, 13.2972)

Have a look what the booklet for
XYZ(30.7362, 28.5401, 13.2972)
contains.

XYZ(30.7168, 28.4883, 13.3310)	3
<i>Conversions</i>	4
<i>Details</i>	6
<i>Harmonies</i>	12
<i>Previews</i>	24
<i>Color Blindness Simulation</i>	28
<i>CSS Examples</i>	31

Color

**XYZ(30.7168, 28.4883,
13.3310)**

Conversions

Conversions Part 1

Format	Color
Hex	BA8759
RGB	186, 135, 89
RGB Percent	73%, 53%, 35%
CMY	0.2706, 0.4706, 0.6510
CMYK	0.00, 0.27, 0.52, 0.27
HSL	28°, 41%, 54%
HSV	28°, 52%, 73%
XYZ	30.7168, 28.4883, 13.3310
YIQ	145.0050, 45.1620, -3.4940

Conversions

Conversions Part 2

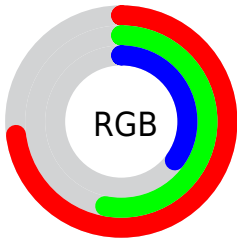
Format	Color
R_{YB}	186, 176, 89
Decimal	12224345
CIE _{Lab}	60.33, 14.13, 32.29
CIE _{LCh}	60, 35.242, 66.372
Yxy	28.4883, 0.4235, 0.3927
Android (android.graphics.Color)	4290414425 (0xFFBA8759)
YUV	145.0050, -27.6105, 35.9526
Hunter-Lab	53.3744, 9.3209, 22.5536

Details

The XYZ color **30.7168, 28.4883, 13.3310** is a dark color, and the websafe version is hex **CC9966**, and the color name is **deer**. A complement of this color would be **22.3603, 24.4240, 49.9899**, and the grayscale version is **27.0121, 28.4188, 30.9481**.

A 20% lighter version of the original color is **60.0251, 57.0930, 32.6673**, and **12.8723, 11.4100, 3.7144** is the 20% darker color. If you saturate the color by 10%, you get **28.7301, 25.6110, 9.2902**, and if you desaturate by 10%, it is **33.0275, 31.6980, 18.4539**.

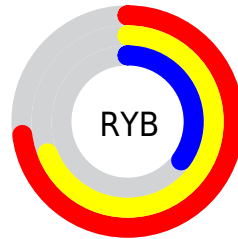
Distribution



Red (73%)

Green (53%)

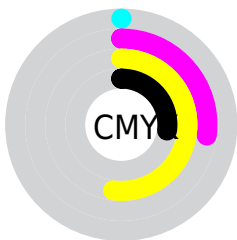
Blue (35%)



Red (73%)

Yellow (69%)

Blue (35%)

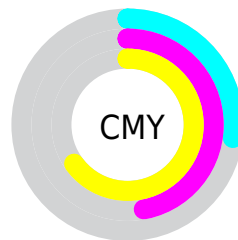


Cyan (0%)

Magenta (27%)

Yellow (52%)

Black (27%)



Cyan (27%)


Magenta (47%)


Yellow (65%)

Brightness & Saturation Gradients


These gradients show how the XYZ color 30.7168, 28.4883, 13.3310 changes by changing the brightness by 10 percent. The first figure shows a shift by +10% for each color and the second figure -10%.

Similar to the brightness gradients but the following saturation gradients show a change of the XYZ color 30.7168, 28.4883, 13.3310 by changing the saturation by 10% instead.


 30.7168, 28.4883,
13.3310


 30.7168, 28.4883,
13.3310


297.0817,
294.7929, 224.3101


 20.5341, 18.6941,
7.5235


 60.1728, 57.2631,
32.5970

 12.8944, 11.4494,
3.7082


 80.1768, 77.0125,
46.8926


 7.4323, 6.3700,
1.4667


 104.1852,
100.8490, 64.8546

 3.7826, 3.0713,
0.1929

 132.5635,
129.1571, 86.9016

 1.5799, 1.1691,
0.0000

 165.6769,
162.3211, 113.4521

 0.3793, 0.0362,
0.0000

203.8908,

 0.0000, 0.0000,

200.7255, 144.9247

0.0000

247.5707,
244.7546, 181.7378

■ 30.7168, 28.4883,
13.3310

■ 30.7168, 28.4883,
13.3310

■ 28.7301, 25.6110,
9.2902

■ 33.0275, 31.6980,
18.4539

■ 27.0469, 23.0491,
6.2488

■ 35.6771, 35.2478,
24.7299

■ 25.6470, 20.7901,
4.1148

■ 38.6816, 39.1502,
32.2258

■ 24.5059, 18.8183,
2.7779

■ 42.0555, 43.4159,
41.0026

■ 23.7570, 17.4538,
2.1168

■ 45.8124, 48.0549,
51.1175

■ 49.9651, 53.0768,
62.6240

■ 54.5257, 58.4909,
75.5727

■ 59.5058, 64.3061,
90.0117

■ 64.6903, 70.4405,
104.7946

Harmonies

Analogous

The Analogous color harmony consists of three colors that are next to each other on the color wheel.



34.7054, 28.4883, 18.4632



30.7168, 28.4883, 13.3310



26.1230, 28.4883, 12.2589

Triad

The Triadic color harmony groups three colors that are evenly spaced from another and form a triangle on the color wheel.



30.7168, 28.4883, 13.3310



19.3174, 28.4883, 33.8675



32.5722, 28.4883, 55.7227

Complementary

The Complementary color scheme is a pair of colors which are on the opposite of each other on the color wheel.



30.7168, 28.4883, 13.3310



22.3603, 24.4240, 49.9899

Split Complementary

Split-complementary colors differ from the complementary color scheme. The scheme consists of three colors, the original color and two neighbors of the complement color.



28.0545, 28.4883, 62.9622



30.7168, 28.4883, 13.3310



20.6578, 28.4883, 48.2686

Square

The Square scheme is like the rectangle color scheme, but the four colors are evenly spaced on the color wheel.



30.7168, 28.4883, 13.3310



19.8620, 28.4883, 22.0643



23.7372, 28.4883, 59.9103



35.8574, 28.4883, 42.1177

Rectangle

The Rectangle color scheme consists of four colors that form a rectangle on the color wheel.



30.7168, 28.4883, 13.3310



23.3931, 28.4883, 13.6202



23.7372, 28.4883, 59.9103



31.1293, 28.4883, 59.1317

Sweetspot

The Sweet Spot groups the original color and five complimentary colors.



30.7175, 28.4897, 13.3316



73.6293, 75.4318, 67.4857



28.6100, 19.4992, 27.3513



15.9365, 16.2598, 14.1390



90.7827, 95.5105, 104.0109



18.6292, 19.5994, 21.3438

Same Dimension

The Same Dimension uses a secret algorithm to generate beautiful new colors.



30.7175, 28.4897, 13.3316



51.4567, 45.4994, 15.6613



38.9381, 44.9310, 16.0718



9.3465, 9.6959, 9.4858



16.0570, 11.8905, 1.4488



0.6281, 0.5432, 0.0718

Inverse Universe

The Inverse Universe completely reimagines the original color for something new.



22.3603, 24.4240, 49.9899



34.5953, 37.2809, 89.5740



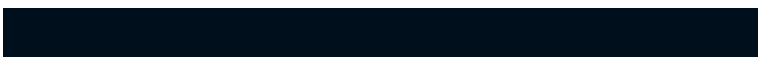
16.8303, 13.3641, 48.1466



8.9013, 9.4798, 11.4401



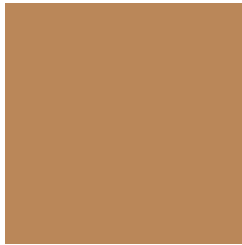
8.9632, 8.3860, 32.3993



0.3775, 0.4186, 1.1627

Previews

White Background



This preview shows how the XYZ color 30.7168, 28.4883, 13.3310 looks on a white background.

Color Contrast Check

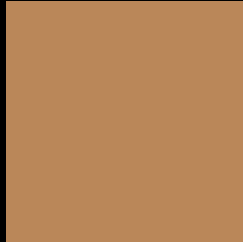
Large Text (above 18pt) WCAG AA ✓ Pass

Any Text WCAG AA × Fail

Large Text (above 18pt) WCAG AAA × Fail

Any Text WCAG AAA × Fail

Black Background



This preview shows how the XYZ color 30.7168, 28.4883, 13.3310 looks on a black background.

Color Contrast Check

Large Text (above 18pt) WCAG AA ✓ Pass

Any Text WCAG AA ✓ Pass

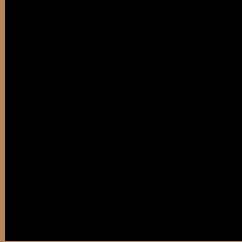
Large Text (above 18pt) WCAG AAA ✓ Pass

Any Text WCAG AAA × Fail

If you want to check with other color combinations, try the [Color Contrast Checker](#).

XYZ 30.7168, 28.4883, 13.3310

Background



This preview shows how black text looks on a background with the XYZ color 30.7168, 28.4883, 13.3310.



This preview shows how white text looks on a background with the XYZ color 30.7168, 28.4883,

Color Blindness Simulation

Color vision deficiency is a very complex topic, and I could not describe the different causes any better than Wikipedia does, so if you want to learn more, you should check out their [article about color blindness](#).

Dichromacy



Original Color

30.7168, 28.4883, 13.3310

Protanopia

26.5527, 28.7190, 14.4998

Deuteranopia

29.1255, 28.5169, 13.2018



Tritanopia

33.7457, 28.5117, 28.1508

Trichromacy



Original Color

30.7168, 28.4883, 13.3310

Protanomaly

27.9670, 28.5537, 14.1626

Deuteranomaly

29.6723, 28.5848, 13.1860

Tritanomaly

32.5538, 28.4319, 21.8613

Monochromacy



Original Color

30.7168, 28.4883, 13.3310

Achromatopsia

26.9133, 28.3149, 30.8349

Achromatomaly

27.7238, 28.0040, 23.3462

CSS Examples

Text

The CSS property to change the color of the text to XYZ 30.7168, 28.4883, 13.3310 is called "color". The color property can be set on classes, ids or directly on the HTML element.

This example shows how text in the color `rgb(186, 135, 89)` looks like.

```
.text, #text, p{  
    color:rgb(186, 135, 89)  
}
```

If you want to add a text shadow in that color use the text-shadow property, you can generate a text shadow directly with our [CSS Text Shadow Generator](#).

Here you see how black text with a 4 pixel rgb(186, 135, 89) colored shadow looks like.

```
.shadow{ text-shadow: 4px 4px 2px rgb(186, 135, 89) }
```

Border

The CSS property to change the border of an element to XYZ 30.7168, 28.4883, 13.3310 is called "border". The border property can be set on classes, ids or directly on the HTML element.

This example shows the color as border, it can be applied via the CSS property "border" or "border-color".

```
.border, #border, table{ border:4px solid rgb(186, 135, 89) }
```


If only the border color should be changed use the property `border-color`.

```
.border{ border-color:rgb(186, 135, 89) }
```

If you want to add a box shadow in that color use:

Here you see how a box with a 4 pixel `rgb(186, 135, 89)` colored shadow looks like.

```
.boxshadow{ -moz-box-shadow:4px 4px 4px  
4px rgb(186, 135, 89); -webkit-box-  
shadow:4px 4px 4px 4px rgb(186, 135, 89);  
box-shadow:4px 4px 4px 4px rgb(186, 135,  
89) }
```

Background

The CSS property to change the background color of an element to XYZ 30.7168, 28.4883, 13.3310 is called "background". The background property can be set on classes, ids or directly on the HTML element.

```
.background, #background, body{  
background: rgb(186, 135, 89) }
```

If only the background color should be changed can be used:

```
.background{ background-color: rgb(186,  
135, 89) }
```

This example shows the color as background, it is applied via the CSS property "background".

To optimize and compress your CSS code, you can use our [online CSS compressor and optimizer](#) based on csstidy. If you want to create a linear or radial gradient as background or border, check our [CSS Gradient Generator](#).

Hey! You found this booklet interesting? Support Converting Colors with the new Membership Option!

The pro membership hides all ads, plus gives you double the colors in the color bucket, and more awesome pro features!

[Learn more, Memberships starting at \\$2.50/m!](#)

**Follow me
on Twitter!**

@ConvertingColor