

Converting Colors

XYZ(30.7746, 29.5291, 26.8396)

Have a look what the booklet for
XYZ(30.7746, 29.5291, 26.8396)
contains.

XYZ(30.6926, 29.4569, 26.9898)	3
<i>Conversions</i>	4
<i>Details</i>	6
<i>Harmonies</i>	12
<i>Previews</i>	24
<i>Color Blindness Simulation</i>	28
<i>CSS Examples</i>	31

Color

**XYZ(30.6926, 29.4569,
26.9898)**

Conversions

Conversions Part 1

Format	Color
Hex	AB8D87
RGB	171, 141, 135
RGB Percent	67%, 55%, 53%
CMY	0.3294, 0.4470, 0.4706
CMYK	0.00, 0.18, 0.21, 0.33
HSL	10°, 18%, 60%
HSV	10°, 21%, 67%
XYZ	30.6926, 29.4569, 26.9898
YIQ	149.2860, 19.8060, 4.4940

Conversions

Conversions Part 2

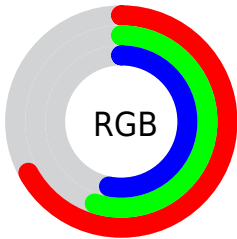
Format	Color
R_{YB}	171, 142, 135
Decimal	11242887
CIE _{Lab}	61.18, 10.35, 7.44
CIE _{LCh}	61, 12.744, 35.711
Yxy	29.4569, 0.3522, 0.3380
Android (android.graphics.Color)	4289432967 (0xFFAB8D87)
YUV	149.2860, -7.0430, 19.0432
Hunter-Lab	54.2742, 5.9636, 8.5079

Details

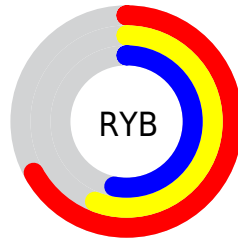
The XYZ color **30.6926, 29.4569, 26.9898** is a dark color, and the websafe version is hex **CC9999**. A complement of this color would be **30.7972, 35.0006, 43.6608**, and the grayscale version is **28.7110, 30.2062, 32.8946**.

A 20% lighter version of the original color is **60.2708, 58.9919, 55.7869**, and **12.8520, 11.9896, 10.2312** is the 20% darker color. If you saturate the color by 10%, you get **27.6166, 25.0793, 20.4940**, and if you desaturate by 10%, it is **34.2339, 34.4552, 34.5955**.

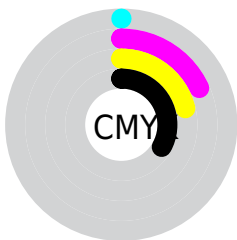
Distribution



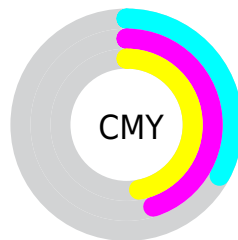
- Red (67%)
- Green (55%)
- Blue (53%)



- Red (67%)
- Yellow (56%)
- Blue (53%)



- Cyan (0%)
- Magenta (18%)
- Yellow (21%)
- Black (33%)



- Cyan (33%)
- Magenta (45%)
- Yellow (47%)

Brightness & Saturation Gradients

These gradients show how the XYZ color 30.6926, 29.4569, 26.9898 changes by changing the brightness by 10 percent. The first figure shows a shift by +10% for each color and the second figure -10%.

Similar to the brightness gradients but the following saturation gradients show a change of the XYZ color 30.6926, 29.4569, 26.9898 by changing the saturation by 10% instead.

■ 30.6926, 29.4569,
26.9898

■ 30.6926, 29.4569,
26.9898

296.9719,
299.3647, 301.3663

■ 20.5156, 19.4267,
17.3332

■ 60.1349, 58.8022,
55.8710

■ 12.8808, 11.9790,
10.3079

■ 80.1309, 78.8862,
75.9328

■ 7.4229, 6.7294,
5.4953

■ 104.1306,
103.0902, 100.2999

■ 3.7767, 3.2935,
2.4769

132.4993,
131.7986, 129.3911

■ 1.5766, 1.2868,
0.8279

165.6025,
165.3959, 163.6247

■ 0.3771, 0.1309,
0.0000

203.8054,

■ 0.0000, 0.0000,

204.2664, 203.4195

0.0000

247.4734,
248.7945, 249.1938

■ 30.6926, 29.4569,
26.9898

■ 30.6926, 29.4569,
26.9898

■ 27.6166, 25.0793,
20.4940

■ 34.2339, 34.4552,
34.5955

■ 24.9842, 21.2942,
15.0543

■ 38.2564, 40.0929,
43.3576

■ 22.7751, 18.0772,
10.6151

■ 42.7782, 46.3931,
53.3226

■ 20.9669, 15.4006,
7.1152

■ 47.8158, 53.3764,
64.5335

■ 19.5349, 13.2345,
4.4864

■ 53.3847, 61.0624,
77.0314

■ 18.4515, 11.5458,
2.6513

■ 59.5001, 69.4702,
90.8553

■ 17.6851, 10.2975,
1.5188

■ 66.1762, 78.6179,
106.0429

■ 17.2222, 9.5131,
0.9285

■ 70.6023, 87.3933,
107.7552

■ 70.6047, 87.3980,
107.7560

Harmonies

Analogous

The Analogous color harmony consists of three colors that are next to each other on the color wheel.



31.3231, 29.4569, 31.1652



30.6926, 29.4569, 26.9898



29.3424, 29.4569, 24.3861

Triad

The Triadic color harmony groups three colors that are evenly spaced from another and form a triangle on the color wheel.



30.6926, 29.4569, 26.9898



25.1663, 29.4569, 28.4305



28.3193, 29.4569, 42.1443

Complementary

The Complementary color scheme is a pair of colors which are on the opposite of each other on the color wheel.



30.6926, 29.4569, 26.9898



30.7972, 35.0006, 43.6608

Split Complementary

Split-complementary colors differ from the complementary color scheme. The scheme consists of three colors, the original color and two neighbors of the complement color.



26.6951, 29.4569, 41.2274



30.6926, 29.4569, 26.9898



24.9167, 29.4569, 32.9994

Square

The Square scheme is like the rectangle color scheme, but the four colors are evenly spaced on the color wheel.



30.6926, 29.4569, 26.9898



26.1614, 29.4569, 25.1580



25.4657, 29.4569, 37.7587



29.9183, 29.4569, 40.1527

Rectangle

The Rectangle color scheme consists of four colors that form a rectangle on the color wheel.



30.6926, 29.4569, 26.9898



28.2392, 29.4569, 23.7340



25.4657, 29.4569, 37.7587



27.7580, 29.4569, 42.1683

Sweetspot

The Sweet Spot groups the original color and five complimentary colors.



30.6934, 29.4582, 26.9904



64.7642, 66.5553, 69.4558



32.2504, 28.7029, 39.4380



14.3425, 14.7016, 15.2708



82.5889, 86.8899, 94.6231



15.4596, 16.2647, 17.7123

Same Dimension

The Same Dimension uses a secret algorithm to generate beautiful new colors.



30.6934, 29.4582, 26.9904



52.4509, 49.1814, 42.9916



33.5662, 35.2037, 27.9480



8.1092, 8.2232, 8.3732



13.0102, 7.2258, 0.7090



0.3937, 0.2646, 0.0303

Inverse Universe

The Inverse Universe completely reimagines the original color for something new.



30.7972, 35.0006, 43.6608



52.6661, 60.8031, 77.9623



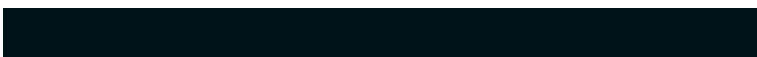
27.7764, 28.9590, 42.6539



8.1210, 8.8413, 10.2312



12.9209, 16.9756, 31.6401



0.3891, 0.5316, 0.8901

Previews

White Background



This preview shows how the XYZ color 30.6926, 29.4569, 26.9898 looks on a white background.

Color Contrast Check

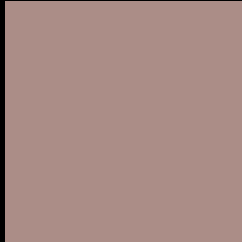
Large Text (above 18pt) WCAG AA ✓ Pass

Any Text WCAG AA × Fail

Large Text (above 18pt) WCAG AAA × Fail

Any Text WCAG AAA × Fail

Black Background



This preview shows how the XYZ color 30.6926, 29.4569, 26.9898 looks on a black background.

Color Contrast Check

Large Text (above 18pt) WCAG AA ✓ Pass

Any Text WCAG AA ✓ Pass

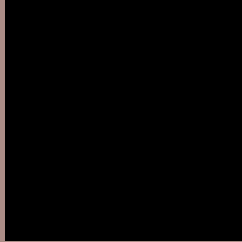
Large Text (above 18pt) WCAG AAA ✓ Pass

Any Text WCAG AAA × Fail

If you want to check with other color combinations, try the [Color Contrast Checker](#).

XYZ 30.6926, 29.4569, 26.9898

Background



This preview shows how black text looks on a background with the XYZ color 30.6926, 29.4569, 26.9898.



This preview shows how white text looks on a background with the XYZ color 30.6926, 29.4569,

Color Blindness Simulation

Color vision deficiency is a very complex topic, and I could not describe the different causes any better than Wikipedia does, so if you want to learn more, you should check out their [article about color blindness](#).

Dichromacy



Original Color

30.6926, 29.4569, 26.9898

Protanopia

28.1580, 29.4747, 28.2499

Deuteranopia

30.1320, 29.6097, 27.0488



Tritanopia

31.9712, 29.5515, 32.8731

Trichromacy



Original Color

30.6926, 29.4569, 26.9898

Protanomaly

29.1380, 29.5305, 27.8311

Deuteranomaly

30.1946, 29.4201, 27.0089

Tritanomaly

31.5022, 29.5712, 30.8355

Monochromacy



Original Color

30.6926, 29.4569, 26.9898

Achromatopsia

28.5667, 30.0544, 32.7292

Achromatomaly

29.2176, 29.7395, 30.5859

CSS Examples

Text

The CSS property to change the color of the text to XYZ 30.6926, 29.4569, 26.9898 is called "color". The color property can be set on classes, ids or directly on the HTML element.

This example shows how text in the color `rgb(171, 141, 135)` looks like.

```
.text, #text, p{  
    color:rgb(171, 141, 135)  
}
```

If you want to add a text shadow in that color use the text-shadow property, you can generate a text shadow directly with our [CSS Text Shadow Generator](#).

Here you see how black text with a 4 pixel rgb(171, 141, 135) colored shadow looks like.

```
.shadow{ text-shadow: 4px 4px 2px rgb(171, 141, 135) }
```

Border

The CSS property to change the border of an element to XYZ 30.6926, 29.4569, 26.9898 is called "border". The border property can be set on classes, ids or directly on the HTML element.

This example shows the color as border, it can be applied via the CSS property "border" or "border-color".

```
.border, #border, table{ border:4px solid rgb(171, 141, 135) }
```


If only the border color should be changed use the property `border-color`.

```
.border{ border-color:rgb(171, 141, 135) }
```

If you want to add a box shadow in that color use:

Here you see how a box with a 4 pixel `rgb(171, 141, 135)` colored shadow looks like.

```
.boxshadow{ -moz-box-shadow:4px 4px 4px  
4px rgb(171, 141, 135); -webkit-box-  
shadow:4px 4px 4px 4px rgb(171, 141, 135);  
box-shadow:4px 4px 4px 4px rgb(171, 141,  
135) }
```

Background

The CSS property to change the background color of an element to XYZ 30.6926, 29.4569, 26.9898 is called "background". The background property can be set on classes, ids or directly on the HTML element.

```
.background, #background, body{  
background: rgb(171, 141, 135) }
```

If only the background color should be changed can be used:

```
.background{ background-color: rgb(171,  
141, 135) }
```

This example shows the color as background, it is applied via the CSS property "background".

To optimize and compress your CSS code, you can use our [online CSS compressor and optimizer](#) based on csstidy. If you want to create a linear or radial gradient as background or border, check our [CSS Gradient Generator](#).

Hey! You found this booklet interesting? Support Converting Colors with the new Membership Option!

The pro membership hides all ads, plus gives you double the colors in the color bucket, and more awesome pro features!

[Learn more, Memberships starting at \\$2.50/m!](#)

**Follow me
on Twitter!**

@ConvertingColor