

Converting Colors

XYZ(30.8099, 26.5107, 26.2058)

Have a look what the booklet for
XYZ(30.8099, 26.5107, 26.2058)
contains.

XYZ(30.8200, 26.4667, 26.0384)	3
<i>Conversions</i>	4
<i>Details</i>	6
<i>Harmonies</i>	12
<i>Previews</i>	24
<i>Color Blindness Simulation</i>	28
<i>CSS Examples</i>	31

Color

**XYZ(30.8200, 26.4667,
26.0384)**

Conversions

Conversions Part 1

Format	Color
Hex	B57E86
RGB	181, 126, 134
RGB Percent	71%, 49%, 53%
CMY	0.2902, 0.5059, 0.4745
CMYK	0.00, 0.30, 0.26, 0.29
HSL	351°, 27%, 60%
HSV	351°, 30%, 71%
XYZ	30.8200, 26.4667, 26.0384
YIQ	143.3570, 30.2120, 14.1480

Conversions

Conversions Part 2

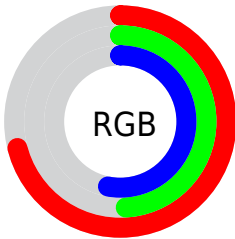
Format	Color
R_{YB}	181, 126, 134
Decimal	11894406
CIE _{Lab}	58.48, 22.48, 4.27
CIE _{LCh}	58, 22.885, 10.750
Yxy	26.4667, 0.3699, 0.3176
Android (android.graphics.Color)	4290084486 (0xFFB57E86)
YUV	143.3570, -4.6130, 33.0129
Hunter-Lab	51.4458, 16.9051, 6.0034

Details

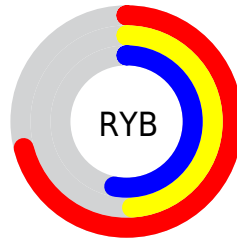
The XYZ color **30.8200, 26.4667, 26.0384** is a dark color, and the websafe version is hex **CC9999**. A complement of this color would be **32.6721, 40.5012, 45.6328**, and the grayscale version is **26.2611, 27.6288, 30.0877**.

A 20% lighter version of the original color is **60.3496, 54.0052, 54.2570**, and **12.9765, 10.3368, 9.9056** is the 20% darker color. If you saturate the color by 10%, you get **27.7104, 21.8495, 20.0628**, and if you desaturate by 10%, it is **34.5076, 31.9870, 32.9859**.

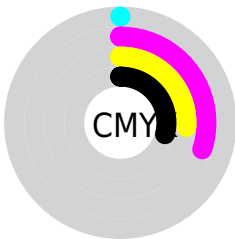
Distribution



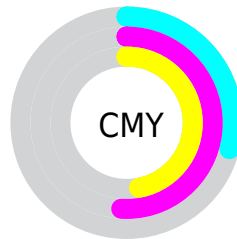
- Red (71%)
- Green (49%)
- Blue (53%)



- Red (71%)
- Yellow (49%)
- Blue (53%)



- Cyan (0%)
- Magenta (30%)
- Yellow (26%)
- Black (29%)



- Cyan (29%)
- Magenta (51%)
- Yellow (47%)

Brightness & Saturation Gradients

These gradients show how the XYZ color 30.8200, 26.4667, 26.0384 changes by changing the brightness by 10 percent. The first figure shows a shift by +10% for each color and the second figure -10%.

Similar to the brightness gradients but the following saturation gradients show a change of the XYZ color 30.8200, 26.4667, 26.0384 by changing the saturation by 10% instead.

30.8200, 26.4667,
26.0384

30.8200, 26.4667,
26.0384

297.5499,
285.0656, 296.5820

20.6130, 17.1731,
16.6263

60.3343, 54.0269,
54.3217

12.9522, 10.3580,
9.8093

80.3724, 73.0623,
74.0301

7.4724, 5.6370,
5.1688

104.4181, 96.1137,
98.0076

3.8082, 2.6256,
2.2862

132.8369,
123.5656, 126.6729

1.5942, 0.9396,
0.7234

165.9941,
155.8024, 160.4444

0.3886, 0.0000,
0.0000

204.2551,

0.0000, 0.0000,

193.2084, 199.7408

0.0000

247.9853,
236.1680, 244.9804

■ 30.8200, 26.4667,
26.0384

■ 30.8200, 26.4667,
26.0384

■ 27.7104, 21.8495,
20.0628

■ 34.5076, 31.9870,
32.9859

■ 25.1472, 18.0838,
15.0139

■ 38.7984, 38.4510,
40.9444

■ 23.0992, 15.1183,
10.8456


■ 43.7186, 45.9014,
49.9527


■ 21.5308, 12.8950,
7.5069


■ 49.2924, 54.3771,
60.0474

■ 20.4022, 11.3478,
4.9415

■ 55.5424, 63.9150,
71.2629

 19.6665, 10.3988,
3.0859

 62.4905, 74.5501,
83.6323

 19.2462, 9.8998,
1.8924

 70.1573, 86.3158,
97.1875

 72.8662, 88.5638,
107.8618

Harmonies

Analogous

The Analogous color harmony consists of three colors that are next to each other on the color wheel.



30.5843, 26.4667, 34.2017



30.8200, 26.4667, 26.0384



29.4554, 26.4667, 19.8851

Triad

The Triadic color harmony groups three colors that are evenly spaced from another and form a triangle on the color wheel.



30.8200, 26.4667, 26.0384



21.8050, 26.4667, 18.6506



23.4235, 26.4667, 45.9483

Complementary

The Complementary color scheme is a pair of colors which are on the opposite of each other on the color wheel.



30.8200, 26.4667, 26.0384



32.6721, 40.5012, 45.6328

Split Complementary

Split-complementary colors differ from the complementary color scheme. The scheme consists of three colors, the original color and two neighbors of the complement color.



21.2964, 26.4667, 40.0904



30.8200, 26.4667, 26.0384



20.4109, 26.4667, 24.0307

Square

The Square scheme is like the rectangle color scheme, but the four colors are evenly spaced on the color wheel.



30.8200, 26.4667, 26.0384



24.1656, 26.4667, 16.1764



20.2319, 26.4667, 31.7881



26.1727, 26.4667, 46.7597

Rectangle

The Rectangle color scheme consists of four colors that form a rectangle on the color wheel.



30.8200, 26.4667, 26.0384



27.8771, 26.4667, 17.3568



20.2319, 26.4667, 31.7881



22.6176, 26.4667, 44.4592

Sweetspot

The Sweet Spot groups the original color and five complimentary colors.



30.8207, 26.4679, 26.0389



70.5124, 70.4142, 75.2181



32.9805, 27.1150, 47.2117



14.9826, 14.8298, 15.7830



86.6293, 91.1408, 99.2523



17.0014, 17.8868, 19.4787

Same Dimension

The Same Dimension uses a secret algorithm to generate beautiful new colors.



30.8207, 26.4679, 26.0389



51.6177, 42.0766, 39.7812



32.9865, 31.6585, 24.1124



8.5450, 8.5247, 9.1026



13.2841, 6.8312, 1.3899



0.4337, 0.2212, 0.1263

Inverse Universe

The Inverse Universe completely reimagines the original color for something new.



30.8207, 26.4679, 26.0389



51.6177, 42.0766, 39.7812



29.8221, 33.5255, 48.6156



8.5450, 8.5247, 9.1026



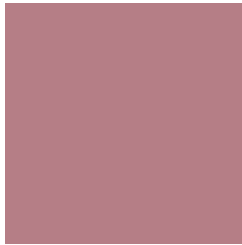
13.2841, 6.8312, 1.3899



0.4337, 0.2212, 0.1263

Previews

White Background



This preview shows how the XYZ color 30.8200, 26.4667, 26.0384 looks on a white background.

Color Contrast Check

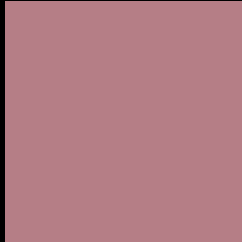
Large Text (above 18pt) WCAG AA ✓ Pass

Any Text WCAG AA ✗ Fail

Large Text (above 18pt) WCAG AAA ✗ Fail

Any Text WCAG AAA ✗ Fail

Black Background



This preview shows how the XYZ color 30.8200, 26.4667, 26.0384 looks on a black background.

Color Contrast Check

Large Text (above 18pt) WCAG AA ✓ Pass

Any Text WCAG AA ✓ Pass

Large Text (above 18pt) WCAG AAA ✓ Pass

Any Text WCAG AAA × Fail

If you want to check with other color combinations, try the [Color Contrast Checker](#).

XYZ 30.8200, 26.4667, 26.0384

Background



This preview shows how black text looks on a background with the XYZ color 30.8200, 26.4667, 26.0384.



This preview shows how white text looks on a background with the XYZ color 30.8200, 26.4667,

Color Blindness Simulation

Color vision deficiency is a very complex topic, and I could not describe the different causes any better than Wikipedia does, so if you want to learn more, you should check out their [article about color blindness](#).

Dichromacy



Original Color

30.8200, 26.4667, 26.0384

Protanopia

25.5883, 26.5488, 29.3670

Deuteranopia

27.0696, 26.5434, 25.5265



Tritanopia

30.8901, 26.4947, 26.4076

Trichromacy



Original Color

30.8200, 26.4667, 26.0384

Protanomaly

27.2288, 26.3601, 28.0790

Deuteranomaly

28.2108, 26.3030, 25.7804

Tritanomaly

30.8901, 26.4947, 26.4076

Monochromacy



Original Color

30.8200, 26.4667, 26.0384

Achromatopsia

26.1081, 27.4677, 29.9124

Achromatomaly

27.5839, 26.9529, 28.5595

CSS Examples

Text

The CSS property to change the color of the text to XYZ 30.8200, 26.4667, 26.0384 is called "color". The color property can be set on classes, ids or directly on the HTML element.

This example shows how text in the color `rgb(181, 126, 134)` looks like.

```
.text, #text, p{  
    color:rgb(181, 126, 134)  
}
```

If you want to add a text shadow in that color use the text-shadow property, you can generate a text shadow directly with our [CSS Text Shadow Generator](#).

Here you see how black text with a 4 pixel rgb(181, 126, 134) colored shadow looks like.

```
.shadow{ text-shadow: 4px 4px 2px rgb(181, 126, 134) }
```

Border

The CSS property to change the border of an element to XYZ 30.8200, 26.4667, 26.0384 is called "border". The border property can be set on classes, ids or directly on the HTML element.

This example shows the color as border, it can be applied via the CSS property "border" or "border-color".

```
.border, #border, table{ border:4px solid rgb(181, 126, 134) }
```


If only the border color should be changed use the property `border-color`.

```
.border{ border-color:rgb(181, 126, 134) }
```

If you want to add a box shadow in that color use:

Here you see how a box with a 4 pixel `rgb(181, 126, 134)` colored shadow looks like.

```
.boxshadow{ -moz-box-shadow:4px 4px 4px 4px rgb(181, 126, 134); -webkit-box-shadow:4px 4px 4px 4px rgb(181, 126, 134); box-shadow:4px 4px 4px 4px rgb(181, 126, 134) }
```

Background

The CSS property to change the background color of an element to XYZ 30.8200, 26.4667, 26.0384 is called "background". The background property can be set on classes, ids or directly on the HTML element.

```
.background, #background, body{  
background: rgb(181, 126, 134) }
```

If only the background color should be changed can be used:

```
.background{ background-color: rgb(181,  
126, 134) }
```

This example shows the color as background, it is applied via the CSS property "background".

To optimize and compress your CSS code, you can use our [online CSS compressor and optimizer](#) based on csstidy. If you want to create a linear or radial gradient as background or border, check our [CSS Gradient Generator](#).

Hey! You found this booklet interesting? Support Converting Colors with the new Membership Option!

The pro membership hides all ads, plus gives you double the colors in the color bucket, and more awesome pro features!

[Learn more, Memberships starting at \\$2.50/m!](#)

**Follow me
on Twitter!**

@ConvertingColor