

Converting Colors

XYZ(30.8103, 30.2889, 30.6389)

Have a look what the booklet for
XYZ(30.8103, 30.2889, 30.6389)
contains.

XYZ(30.8853, 30.3714, 30.6200)	3
<i>Conversions</i>	4
<i>Details</i>	6
<i>Harmonies</i>	12
<i>Previews</i>	24
<i>Color Blindness Simulation</i>	28
<i>CSS Examples</i>	31

Color

**XYZ(30.8853, 30.3714,
30.6200)**

Conversions

Conversions Part 1

Format	Color
Hex	A69190
RGB	166, 145, 144
RGB Percent	65%, 57%, 56%
CMY	0.3490, 0.4314, 0.4353
CMYK	0.00, 0.13, 0.13, 0.35
HSL	3°, 11%, 61%
HSV	3°, 13%, 65%
XYZ	30.8853, 30.3714, 30.6200
YIQ	151.1650, 12.8370, 4.1410

Conversions

Conversions Part 2

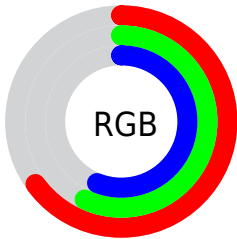
Format	Color
R_{YB}	166, 145, 144
Decimal	10916240
CIE Lab	61.97, 7.66, 3.40
CIE LCh	62, 8.379, 23.972
Yxy	30.3714, 0.3362, 0.3306
Android (android.graphics.Color)	4289106320 (0xFFA69190)
YUV	151.1650, -3.5323, 13.0103
Hunter-Lab	55.1103, 3.5934, 5.6349

Details

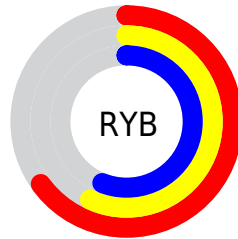
The XYZ color **30.8853, 30.3714, 30.6200** is a light color, and the websafe version is hex **999999**. A complement of this color would be **31.8394, 35.5919, 41.2684**, and the grayscale version is **29.4975, 31.0337, 33.7957**.

A 20% lighter version of the original color is **60.4353, 60.2962, 61.8791**, and **13.0520, 12.5700, 12.3280** is the 20% darker color. If you saturate the color by 10%, you get **27.4544, 25.3928, 23.6703**, and if you desaturate by 10%, it is **34.8421, 36.1026, 38.6662**.

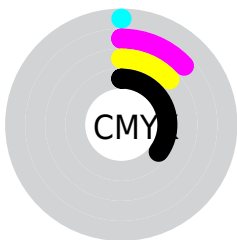
Distribution



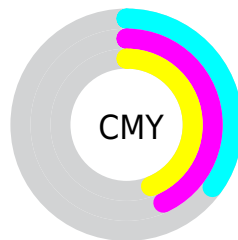
- Red (65%)
- Green (57%)
- Blue (56%)



- Red (65%)
- Yellow (57%)
- Blue (56%)



- Cyan (0%)
- Magenta (13%)
- Yellow (13%)
- Black (35%)



- Cyan (35%)
- Magenta (43%)
- Yellow (44%)

Brightness & Saturation Gradients

These gradients show how the XYZ color 30.8853, 30.3714, 30.6200 changes by changing the brightness by 10 percent. The first figure shows a shift by +10% for each color and the second figure -10%.

Similar to the brightness gradients but the following saturation gradients show a change of the XYZ color 30.8853, 30.3714, 30.6200 by changing the saturation by 10% instead.

■ 30.8853, 30.3714,
30.6200

■ 30.8853, 30.3714,
30.6200

297.8459,
303.6318, 319.0806

■ 20.6629, 20.1207,
20.0536

■ 60.4365, 60.2490,
61.7138

■ 12.9889, 12.4828,
12.2496

■ 80.4961, 80.6447,
83.0784

■ 7.4978, 7.0734,
6.7893

104.5654,
105.1908, 108.8794

■ 3.8244, 3.5080,
3.2542

133.0098,
134.2718, 139.5355

■ 1.6033, 1.4024,
1.2259

166.1947,
168.2720, 175.4651

■ 0.3946, 0.2185,
0.0000

204.4855,

■ 0.0000, 0.0000,

207.5758, 217.0868

0.0000

248.2474,
252.5676, 264.8191

■ 30.8853, 30.3714,
30.6200

■ 30.8853, 30.3714,
30.6200

■ 27.4544, 25.3928,
23.6703

■ 34.8421, 36.1026,
38.6662

■ 24.5249, 21.1316,
17.7677

■ 39.3429, 42.6115,
47.8514

■ 22.0741, 17.5562,
12.8623

■ 44.4083, 49.9272,
58.2183

■ 20.0764, 14.6305,
8.8988

■ 50.0568, 58.0760,
69.8067

■ 18.5042, 12.3157,
5.8169

■ 56.3061, 67.0829,
82.6546

■ 17.3264, 10.5684,
3.5493

■ 63.1734, 76.9719,
96.7984

■ 16.5082, 9.3398,
2.0188

■ 69.5360, 86.8470,
107.7060

■ 16.0081, 8.5727,
1.1337

■ 15.8081, 8.2713,
0.7633

Harmonies

Analogous

The Analogous color harmony consists of three colors that are next to each other on the color wheel.



31.0680, 30.3714, 33.7229



30.8853, 30.3714, 30.6200



30.1558, 30.3714, 28.3162

Triad

The Triadic color harmony groups three colors that are evenly spaced from another and form a triangle on the color wheel.



30.8853, 30.3714, 30.6200



27.1559, 30.3714, 29.5639



28.6410, 30.3714, 39.6078

Complementary

The Complementary color scheme is a pair of colors which are on the opposite of each other on the color wheel.



30.8853, 30.3714, 30.6200



31.8394, 35.5919, 41.2684

Split Complementary

Split-complementary colors differ from the complementary color scheme. The scheme consists of three colors, the original color and two neighbors of the complement color.



27.6157, 30.3714, 38.3265



30.8853, 30.3714, 30.6200



26.7727, 30.3714, 32.4242

Square

The Square scheme is like the rectangle color scheme, but the four colors are evenly spaced on the color wheel.



30.8853, 30.3714, 30.6200



27.9987, 30.3714, 27.7347



26.9388, 30.3714, 35.6458



29.7533, 30.3714, 39.0475

Rectangle

The Rectangle color scheme consists of four colors that form a rectangle on the color wheel.



30.8853, 30.3714, 30.6200



29.4674, 30.3714, 27.4749



26.9388, 30.3714, 35.6458



28.2751, 30.3714, 39.3757

Sweetspot

The Sweet Spot groups the original color and five complimentary colors.



30.8861, 30.3728, 30.6206



62.6080, 64.6153, 68.8983



32.5153, 30.7802, 39.9524



13.8866, 14.2804, 15.1658



80.6108, 84.8088, 92.3568



14.7206, 15.4872, 16.8656

Same Dimension

The Same Dimension uses a secret algorithm to generate beautiful new colors.



30.8861, 30.3728, 30.6206



54.0599, 52.2300, 51.5260



32.6040, 33.8085, 31.1933



7.5575, 7.5951, 7.8570



12.2679, 6.4330, 0.5951



0.3068, 0.1731, 0.0173

Inverse Universe

The Inverse Universe completely reimagines the original color for something new.



31.8394, 35.5919, 41.2684



56.1433, 63.6373, 74.7994



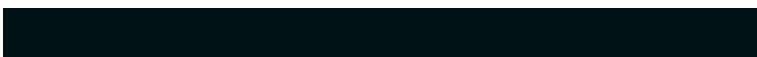
29.9846, 31.8822, 40.6502



7.7178, 8.4725, 9.6469



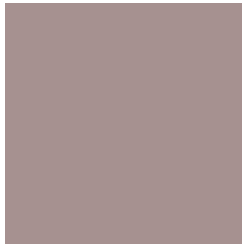
14.8854, 21.2309, 31.2889



0.3708, 0.5338, 0.7641

Previews

White Background



This preview shows how the XYZ color 30.8853, 30.3714, 30.6200 looks on a white background.

Color Contrast Check

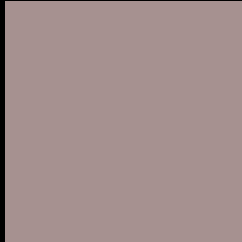
Large Text (above 18pt) WCAG AA × Fail

Any Text WCAG AA × Fail

Large Text (above 18pt) WCAG AAA × Fail

Any Text WCAG AAA × Fail

Black Background



This preview shows how the XYZ color 30.8853, 30.3714, 30.6200 looks on a black background.

Color Contrast Check

Large Text (above 18pt) WCAG AA ✓ Pass

Any Text WCAG AA ✓ Pass

Large Text (above 18pt) WCAG AAA ✓ Pass

Any Text WCAG AAA ✓ Pass

If you want to check with other color combinations, try the [Color Contrast Checker](#).

XYZ 30.8853, 30.3714, 30.6200

Background



This preview shows how black text looks on a background with the XYZ color 30.8853, 30.3714, 30.6200.



This preview shows how white text looks on a background with the XYZ color 30.8853, 30.3714,

Color Blindness Simulation

Color vision deficiency is a very complex topic, and I could not describe the different causes any better than Wikipedia does, so if you want to learn more, you should check out their [article about color blindness](#).

Dichromacy



Original Color

30.8853, 30.3714, 30.6200

Protanopia

29.0726, 30.3425, 31.5185

Deuteranopia

30.8853, 30.3714, 30.6200



Tritanopia

31.6752, 30.2270, 35.1753

Trichromacy



Original Color

30.8853, 30.3714, 30.6200

Protanomaly

29.8013, 30.4932, 31.1032

Deuteranomaly

30.8853, 30.3714, 30.6200

Tritanomaly

31.4955, 30.3964, 33.4852

Monochromacy



Original Color

30.8853, 30.3714, 30.6200

Achromatopsia

29.4150, 30.9469, 33.7012

Achromatomaly

29.8030, 30.7009, 32.3721

CSS Examples

Text

The CSS property to change the color of the text to XYZ 30.8853, 30.3714, 30.6200 is called "color". The color property can be set on classes, ids or directly on the HTML element.

This example shows how text in the color `rgb(166, 145, 144)` looks like.

```
.text, #text, p{  
    color:rgb(166, 145, 144)  
}
```

If you want to add a text shadow in that color use the text-shadow property, you can generate a text shadow directly with our [CSS Text Shadow Generator](#).

Here you see how black text with a 4 pixel rgb(166, 145, 144) colored shadow looks like.

```
.shadow{ text-shadow: 4px 4px 2px rgb(166, 145, 144) }
```

Border

The CSS property to change the border of an element to XYZ 30.8853, 30.3714, 30.6200 is called "border". The border property can be set on classes, ids or directly on the HTML element.

This example shows the color as border, it can be applied via the CSS property "border" or "border-color".

```
.border, #border, table{ border:4px solid rgb(166, 145, 144) }
```


If only the border color should be changed use the property `border-color`.

```
.border{ border-color:rgb(166, 145, 144) }
```

If you want to add a box shadow in that color use:

Here you see how a box with a 4 pixel `rgb(166, 145, 144)` colored shadow looks like.

```
.boxshadow{ -moz-box-shadow:4px 4px 4px 4px rgb(166, 145, 144); -webkit-box-shadow:4px 4px 4px 4px rgb(166, 145, 144); box-shadow:4px 4px 4px 4px rgb(166, 145, 144) }
```

Background

The CSS property to change the background color of an element to XYZ 30.8853, 30.3714, 30.6200 is called "background". The background property can be set on classes, ids or directly on the HTML element.

```
.background, #background, body{  
background: rgb(166, 145, 144) }
```

If only the background color should be changed can be used:

```
.background{ background-color: rgb(166,  
145, 144) }
```

This example shows the color as background, it is applied via the CSS property "background".

To optimize and compress your CSS code, you can use our [online CSS compressor and optimizer](#) based on csstidy. If you want to create a linear or radial gradient as background or border, check our [CSS Gradient Generator](#).

Hey! You found this booklet interesting? Support Converting Colors with the new Membership Option!

The pro membership hides all ads, plus gives you double the colors in the color bucket, and more awesome pro features!

[Learn more, Memberships starting at \\$2.50/m!](#)

**Follow me
on Twitter!**

@ConvertingColor