

Converting Colors

XYZ(30.8123, 26.7749, 24.9787)

Have a look what the booklet for
XYZ(30.8123, 26.7749, 24.9787)
contains.

XYZ(30.8720, 26.9008, 25.0380)	3
<i>Conversions</i>	4
<i>Details</i>	6
<i>Harmonies</i>	12
<i>Previews</i>	24
<i>Color Blindness Simulation</i>	28
<i>CSS Examples</i>	31

Color

**XYZ(30.8720, 26.9008,
25.0380)**

Conversions

Conversions Part 1

Format	Color
Hex	B58083
RGB	181, 128, 131
RGB Percent	71%, 50%, 51%
CMY	0.2902, 0.4980, 0.4863
CMYK	0.00, 0.29, 0.28, 0.29
HSL	357°, 26%, 61%
HSV	357°, 29%, 71%
XYZ	30.8720, 26.9008, 25.0380
YIQ	144.1890, 30.6250, 12.1690

Conversions

Conversions Part 2

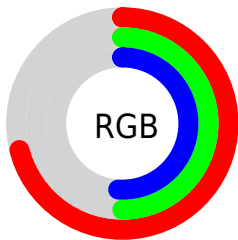
Format	Color
R_{YB}	181, 128, 131
Decimal	11894915
CIE _{Lab}	58.88, 20.93, 6.58
CIE _{LCh}	59, 21.940, 17.445
Yxy	26.9008, 0.3728, 0.3248
Android (android.graphics.Color)	4290084995 (0xFFB58083)
YUV	144.1890, -6.5022, 32.2832
Hunter-Lab	51.8660, 15.4824, 7.6843

Details

The XYZ color **30.8720, 26.9008, 25.0380** is a light color, and the websafe version is hex **CC9999**. A complement of this color would be **33.4630, 40.8520, 48.2431**, and the grayscale version is **26.6028, 27.9882, 30.4791**.

A 20% lighter version of the original color is **60.4355, 54.6856, 52.7175**, and **12.9998, 10.5700, 9.3377** is the 20% darker color. If you saturate the color by 10%, you get **27.6548, 22.1683, 18.7184**, and if you desaturate by 10%, it is **34.7026, 32.5544, 32.5038**.

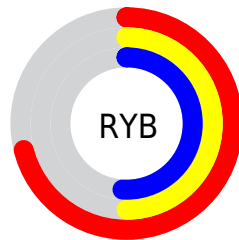
Distribution



Red (71%)

Green (50%)

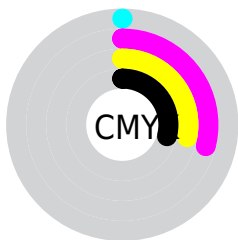
Blue (51%)



Red (71%)

Yellow (50%)

Blue (51%)

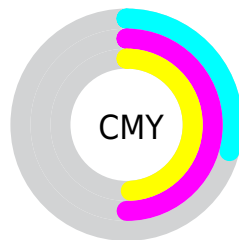


Cyan (0%)

Magenta (29%)

Yellow (28%)

Black (29%)



Cyan (29%)

Magenta (50%)

Yellow (49%)

Brightness & Saturation Gradients

These gradients show how the XYZ color 30.8720, 26.9008, 25.0380 changes by changing the brightness by 10 percent. The first figure shows a shift by +10% for each color and the second figure -10%.

Similar to the brightness gradients but the following saturation gradients show a change of the XYZ color 30.8720, 26.9008, 25.0380 by changing the saturation by 10% instead.

■ 30.8720, 26.9008,
25.0380

■ 30.8720, 26.9008,
25.0380

297.7856,
287.1765, 291.4809

■ 20.6527, 17.4987,
15.8861

■ 60.4157, 54.7246,
52.6837

■ 12.9814, 10.5907,
9.2901

■ 80.4709, 73.9152,
72.0147

■ 7.4927, 5.7923,
4.8315

■ 104.5354, 97.1374,
95.5757

■ 3.8211, 2.7192,
2.0917

132.9746,
124.7756, 123.7853

■ 1.6014, 0.9870,
0.6108

166.1539,
157.2142, 157.0621

■ 0.3934, 0.0000,
0.0000

204.4386,

■ 0.0000, 0.0000,

194.8376, 195.8246

0.0000

248.1940,
238.0303, 240.4913

■ 30.8720, 26.9008,
25.0380

■ 30.8720, 26.9008,
25.0380

■ 27.6548, 22.1683,
18.7184

■ 34.7026, 32.5544,
32.5038

■ 25.0170, 18.3045,
13.4867

■ 39.1739, 39.1703,
41.1669

■ 22.9248, 15.2578,
9.2819

■ 44.3140, 46.7916,
51.0773

■ 21.3399, 12.9694,
6.0366

■ 50.1489, 55.4579,
62.2816

■ 20.2192, 11.3728,
3.6749

■ 56.7031, 65.2066,
74.8241

■ 19.5121, 10.3898,
2.1099

■ 64.0000, 76.0732,
88.7469

■ 19.1334, 9.8774,
1.2290

■ 72.0618, 88.0916,
104.0903

■ 19.1122, 9.8462,
1.1871

■ 72.8662, 88.5638,
107.8618

Harmonies

Analogous

The Analogous color harmony consists of three colors that are next to each other on the color wheel.



31.0027, 26.9008, 32.6576



30.8720, 26.9008, 25.0380



29.2591, 26.9008, 19.6103

Triad

The Triadic color harmony groups three colors that are evenly spaced from another and form a triangle on the color wheel.



30.8720, 26.9008, 25.0380



21.9168, 26.9008, 20.3079



24.4517, 26.9008, 46.4168

Complementary

The Complementary color scheme is a pair of colors which are on the opposite of each other on the color wheel.



30.8720, 26.9008, 25.0380



33.4630, 40.8520, 48.2431

Split Complementary

Split-complementary colors differ from the complementary color scheme. The scheme consists of three colors, the original color and two neighbors of the complement color.



22.2019, 26.9008, 41.7243



30.8720, 26.9008, 25.0380



20.8094, 26.9008, 26.1630

Square

The Square scheme is like the rectangle color scheme, but the four colors are evenly spaced on the color wheel.



30.8720, 26.9008, 25.0380



24.0369, 26.9008, 17.2296



20.9099, 26.9008, 33.9989



27.1636, 26.9008, 45.9700

Rectangle

The Rectangle color scheme consists of four colors that form a rectangle on the color wheel.



30.8720, 26.9008, 25.0380



27.6209, 26.9008, 17.5513



20.9099, 26.9008, 33.9989



23.6202, 26.9008, 45.3578

Sweetspot

The Sweet Spot groups the original color and five complimentary colors.



30.8727, 26.9021, 25.0385



70.2703, 70.3174, 73.9434



34.2984, 28.1778, 47.3474



14.9232, 14.8060, 15.4700



86.6293, 91.1408, 99.2523



17.0014, 17.8868, 19.4787

Same Dimension

The Same Dimension uses a secret algorithm to generate beautiful new colors.



30.8727, 26.9021, 25.0385



51.5341, 42.6489, 37.4736



34.0144, 33.5058, 25.0982



8.5152, 8.5128, 8.9455



13.1843, 6.7913, 0.8644



0.4212, 0.2162, 0.0609

Inverse Universe

The Inverse Universe completely reimagines the original color for something new.



30.8727, 26.9021, 25.0385



51.5341, 42.6489, 37.4736



29.4762, 32.3916, 48.4149



8.5152, 8.5128, 8.9455



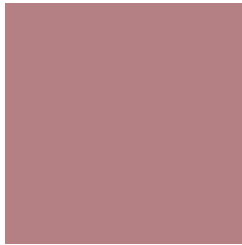
13.1843, 6.7913, 0.8644



0.4212, 0.2162, 0.0609

Previews

White Background



This preview shows how the XYZ color 30.8720, 26.9008, 25.0380 looks on a white background.

Color Contrast Check

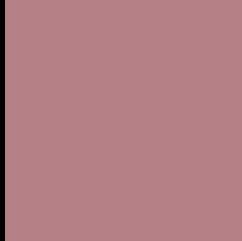
Large Text (above 18pt) WCAG AA ✓ Pass

Any Text WCAG AA ✗ Fail

Large Text (above 18pt) WCAG AAA ✗ Fail

Any Text WCAG AAA ✗ Fail

Black Background



This preview shows how the XYZ color 30.8720, 26.9008, 25.0380 looks on a black background.

Color Contrast Check

Large Text (above 18pt) WCAG AA ✓ Pass

Any Text WCAG AA ✓ Pass

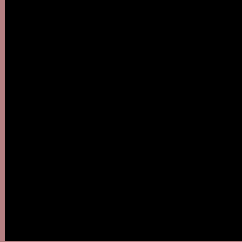
Large Text (above 18pt) WCAG AAA ✓ Pass

Any Text WCAG AAA × Fail

If you want to check with other color combinations, try the [Color Contrast Checker](#).

XYZ 30.8720, 26.9008, 25.0380

Background



This preview shows how black text looks on a background with the XYZ color 30.8720, 26.9008, 25.0380.



This preview shows how white text looks on a background with the XYZ color 30.8720, 26.9008,

25.0380.

Color Blindness Simulation

Color vision deficiency is a very complex topic, and I could not describe the different causes any better than Wikipedia does, so if you want to learn more, you should check out their [article about color blindness](#).

Dichromacy



Original Color

30.8720, 26.9008, 25.0380

Protanopia

25.7894, 26.9045, 27.8786

Deuteranopia

27.4053, 26.9499, 24.5263



Tritanopia

31.3961, 26.9300, 27.2102

Trichromacy



Original Color

30.8720, 26.9008, 25.0380

Protanomaly

27.2779, 26.6267, 26.6234

Deuteranomaly

28.7028, 26.9867, 24.8153

Tritanomaly

31.2539, 26.8731, 26.4614

Monochromacy



Original Color

30.8720, 26.9008, 25.0380

Achromatopsia

26.5089, 27.8894, 30.3716

Achromatomaly

27.6533, 27.2091, 28.2205

CSS Examples

Text

The CSS property to change the color of the text to XYZ 30.8720, 26.9008, 25.0380 is called "color". The color property can be set on classes, ids or directly on the HTML element.

This example shows how text in the color `rgb(181, 128, 131)` looks like.

```
.text, #text, p{  
    color:rgb(181, 128, 131)  
}
```

If you want to add a text shadow in that color use the text-shadow property, you can generate a text shadow directly with our [CSS Text Shadow Generator](#).

Here you see how black text with a 4 pixel rgb(181, 128, 131) colored shadow looks like.

```
.shadow{ text-shadow: 4px 4px 2px rgb(181, 128, 131) }
```

Border

The CSS property to change the border of an element to XYZ 30.8720, 26.9008, 25.0380 is called "border". The border property can be set on classes, ids or directly on the HTML element.

This example shows the color as border, it can be applied via the CSS property "border" or "border-color".

```
.border, #border, table{ border:4px solid rgb(181, 128, 131) }
```


If only the border color should be changed use the property `border-color`.

```
.border{ border-color:rgb(181, 128, 131) }
```

If you want to add a box shadow in that color use:

Here you see how a box with a 4 pixel `rgb(181, 128, 131)` colored shadow looks like.

```
.boxshadow{ -moz-box-shadow:4px 4px 4px  
4px rgb(181, 128, 131); -webkit-box-  
shadow:4px 4px 4px 4px rgb(181, 128, 131);  
box-shadow:4px 4px 4px 4px rgb(181, 128,  
131) }
```

Background

The CSS property to change the background color of an element to XYZ 30.8720, 26.9008, 25.0380 is called "background". The background property can be set on classes, ids or directly on the HTML element.

```
.background, #background, body{  
background: rgb(181, 128, 131) }
```

If only the background color should be changed can be used:

```
.background{ background-color: rgb(181,  
128, 131) }
```

This example shows the color as background, it is applied via the CSS property "background".

To optimize and compress your CSS code, you can use our [online CSS compressor and optimizer](#) based on csstidy. If you want to create a linear or radial gradient as background or border, check our [CSS Gradient Generator](#).

Hey! You found this booklet interesting? Support Converting Colors with the new Membership Option!

The pro membership hides all ads, plus gives you double the colors in the color bucket, and more awesome pro features!

[Learn more, Memberships starting at \\$2.50/m!](#)

**Follow me
on Twitter!**

@ConvertingColor