

Converting Colors

XYZ(30.9675, 26.6518, 22.1390)

Have a look what the booklet for
XYZ(30.9675, 26.6518, 22.1390)
contains.

XYZ(31.0436, 26.6661, 22.2498)	3
<i>Conversions</i>	4
<i>Details</i>	6
<i>Harmonies</i>	12
<i>Previews</i>	24
<i>Color Blindness Simulation</i>	28
<i>CSS Examples</i>	31

Color

**XYZ(31.0436, 26.6661,
22.2498)**

Conversions

Conversions Part 1

Format	Color
Hex	B97E7B
RGB	185, 126, 123
RGB Percent	73%, 49%, 48%
CMY	0.2745, 0.5059, 0.5176
CMYK	0.00, 0.32, 0.34, 0.27
HSL	3°, 31%, 60%
HSV	3°, 34%, 73%
XYZ	31.0436, 26.6661, 22.2498
YIQ	143.2990, 36.1270, 11.5750

Conversions

Conversions Part 2

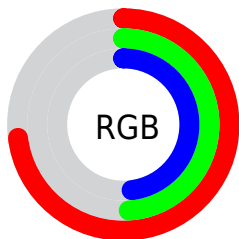
Format	Color
R_{YB}	185, 126, 123
Decimal	12156539
CIE _{Lab}	58.66, 22.51, 10.93
CIE _{LCh}	59, 25.021, 25.900
Yxy	26.6661, 0.3882, 0.3335
Android (android.graphics.Color)	4290346619 (0xFFB97E7B)
YUV	143.2990, -10.0074, 36.5718
Hunter-Lab	51.6392, 16.9390, 10.6012

Details

The XYZ color **31.0436, 26.6661, 22.2498** is a dark color, and the websafe version is hex **CC9999**. A complement of this color would be **33.6526, 41.1681, 52.0715**, and the grayscale version is **26.2572, 27.6246, 30.0832**.

A 20% lighter version of the original color is **60.4759, 54.2126, 47.8341**, and **13.0264, 10.4091, 7.8012** is the 20% darker color. If you saturate the color by 10%, you get **27.9368, 22.1340, 16.0304**, and if you desaturate by 10%, it is **34.7668, 32.0805, 29.7549**.

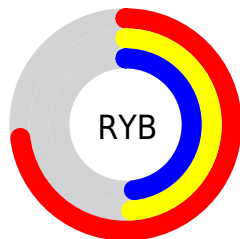
Distribution



Red (73%)

Green (49%)

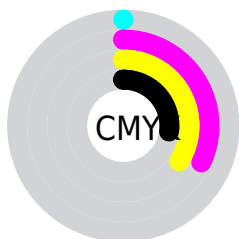
Blue (48%)



Red (73%)

Yellow (49%)

Blue (48%)

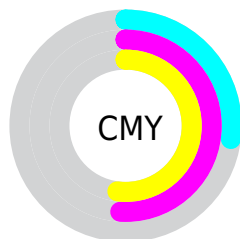


Cyan (0%)

Magenta (32%)

Yellow (34%)

Black (27%)



Cyan (27%)

Magenta (51%)

Yellow (52%)

Brightness & Saturation Gradients

These gradients show how the XYZ color 31.0436, 26.6661, 22.2498 changes by changing the brightness by 10 percent. The first figure shows a shift by +10% for each color and the second figure -10%.

Similar to the brightness gradients but the following saturation gradients show a change of the XYZ color 31.0436, 26.6661, 22.2498 by changing the saturation by 10% instead.

■ 31.0436, 26.6661,
22.2498

■ 31.0436, 26.6661,
22.2498

298.5624,
286.0368, 276.8440

■ 20.7840, 17.3226,
13.8405

■ 60.6841, 54.3476,
48.0660

■ 13.0778, 10.4648,
7.8723

■ 80.7957, 73.4544,
66.3100

■ 7.5595, 5.7082,
3.9268

■ 104.9221, 96.5844,
88.6692

■ 3.8638, 2.6685,
1.5853

133.4286,
124.1221, 115.5623

■ 1.6254, 0.9612,
0.2803

166.6805,
156.4517, 147.4078

■ 0.4089, 0.0000,
0.0000

205.0432,

■ 0.0000, 0.0000,

193.9578, 184.6242

0.0000

248.8820,
237.0247, 227.6301

■ 31.0436, 26.6661,
22.2498

■ 31.0436, 26.6661,
22.2498

■ 27.9368, 22.1340,
16.0304

■ 34.7668, 32.0805,
29.7549

■ 25.4112, 18.4338,
11.0231

■ 39.1348, 38.4164,
38.6106

■ 23.4311, 15.5162,
7.1493

■ 44.1771, 45.7153,
48.8793

■ 21.9564, 13.3249,
4.3206

■ 49.9204, 54.0149,
60.6188

■ 20.9411, 11.7960,
2.4352

■ 56.3903, 63.3512,
73.8840

■ 20.3309, 10.8548,
1.3715

■ 63.6107, 73.7582,
88.7268

■ 20.1049, 10.5089,
0.9688

■ 71.6047, 85.2683,
105.1967

■ 73.8176, 89.0543,
107.9063

Harmonies

Analogous

The Analogous color harmony consists of three colors that are next to each other on the color wheel.



31.7107, 26.6661, 30.2621



31.0436, 26.6661, 22.2498



28.8061, 26.6661, 17.1510

Triad

The Triadic color harmony groups three colors that are evenly spaced from another and form a triangle on the color wheel.



31.0436, 26.6661, 22.2498



20.7586, 26.6661, 20.5400



24.9250, 26.6661, 49.4069

Complementary

The Complementary color scheme is a pair of colors which are on the opposite of each other on the color wheel.



31.0436, 26.6661, 22.2498



33.6526, 41.1681, 52.0715

Split Complementary

Split-complementary colors differ from the complementary color scheme. The scheme consists of three colors, the original color and two neighbors of the complement color.



22.1735, 26.6661, 45.4313



31.0436, 26.6661, 22.2498



19.8944, 26.6661, 27.8412

Square

The Square scheme is like the rectangle color scheme, but the four colors are evenly spaced on the color wheel.



31.0436, 26.6661, 22.2498



22.8499, 26.6661, 16.3129



20.3909, 26.6661, 37.0756



28.0162, 26.6661, 47.0823

Rectangle

The Rectangle color scheme consists of four colors that form a rectangle on the color wheel.



31.0436, 26.6661, 22.2498



26.8129, 26.6661, 15.5157



20.3909, 26.6661, 37.0756



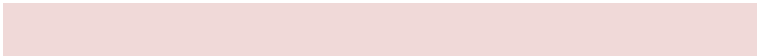
23.9323, 26.6661, 48.7446

Sweetspot

The Sweet Spot groups the original color and five complimentary colors.



31.0443, 26.6674, 22.2503



72.9781, 72.9865, 75.0243



35.6310, 27.8966, 48.2700



15.4699, 15.3540, 15.6393



88.6918, 93.3107, 101.6153



17.8044, 18.7317, 20.3988

Same Dimension

The Same Dimension uses a secret algorithm to generate beautiful new colors.



31.0443, 26.6674, 22.2503



51.5168, 41.8071, 31.6678



35.4825, 35.5439, 23.7297



9.0386, 9.0801, 9.3832



13.7052, 7.1867, 0.6648



0.4950, 0.2771, 0.0274

Inverse Universe

The Inverse Universe completely reimagines the original color for something new.



33.6526, 41.1681, 52.0715



56.8777, 71.6343, 93.0336



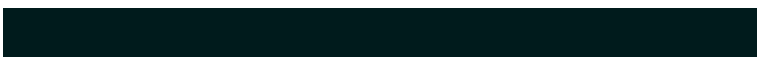
28.1430, 30.1488, 50.2350



9.2284, 10.1340, 11.5491



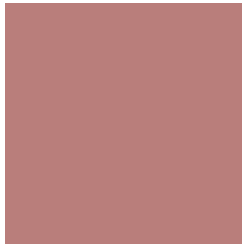
16.5547, 23.5690, 34.9298



0.5951, 0.8538, 1.2352

Previews

White Background



This preview shows how the XYZ color 31.0436, 26.6661, 22.2498 looks on a white background.

Color Contrast Check

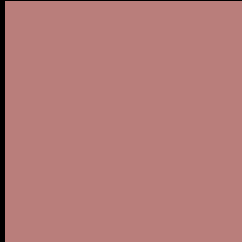
Large Text (above 18pt) WCAG AA ✓ Pass

Any Text WCAG AA × Fail

Large Text (above 18pt) WCAG AAA × Fail

Any Text WCAG AAA × Fail

Black Background



This preview shows how the XYZ color 31.0436, 26.6661, 22.2498 looks on a black background.

Color Contrast Check

Large Text (above 18pt) WCAG AA ✓ Pass

Any Text WCAG AA ✓ Pass

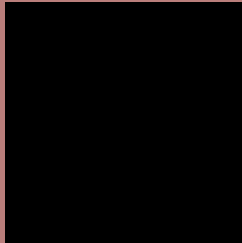
Large Text (above 18pt) WCAG AAA ✓ Pass

Any Text WCAG AAA × Fail

If you want to check with other color combinations, try the [Color Contrast Checker](#).

XYZ 31.0436, 26.6661, 22.2498

Background



This preview shows how black text looks on a background with the XYZ color 31.0436, 26.6661, 22.2498.



This preview shows how white text looks on a background with the XYZ color 31.0436, 26.6661,

Color Blindness Simulation

Color vision deficiency is a very complex topic, and I could not describe the different causes any better than Wikipedia does, so if you want to learn more, you should check out their [article about color blindness](#).

Dichromacy



Original Color

31.0436, 26.6661, 22.2498

Protanopia

25.6542, 26.8915, 25.3112

Deuteranopia

27.1556, 26.6702, 21.8058



Tritanopia

31.7604, 26.5756, 26.0099

Trichromacy



Original Color

31.0436, 26.6661, 22.2498

Protanomaly

27.3984, 26.7439, 24.1401

Deuteranomaly

28.3417, 26.4537, 22.0247

Tritanomaly

31.6126, 26.7180, 24.6100

Monochromacy



Original Color

31.0436, 26.6661, 22.2498

Achromatopsia

26.1081, 27.4677, 29.9124

Achromatomaly

27.4901, 26.9380, 27.0432

CSS Examples

Text

The CSS property to change the color of the text to XYZ 31.0436, 26.6661, 22.2498 is called "color". The color property can be set on classes, ids or directly on the HTML element.

This example shows how text in the color `rgb(185, 126, 123)` looks like.

```
.text, #text, p{  
    color:rgb(185, 126, 123)  
}
```

If you want to add a text shadow in that color use the text-shadow property, you can generate a text shadow directly with our [CSS Text Shadow Generator](#).

Here you see how black text with a 4 pixel rgb(185, 126, 123) colored shadow looks like.

```
.shadow{ text-shadow: 4px 4px 2px rgb(185, 126, 123) }
```

Border

The CSS property to change the border of an element to XYZ 31.0436, 26.6661, 22.2498 is called "border". The border property can be set on classes, ids or directly on the HTML element.

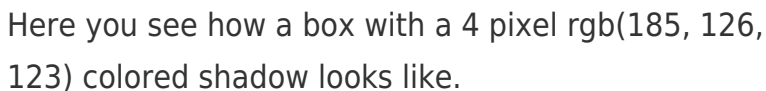
This example shows the color as border, it can be applied via the CSS property "border" or "border-color".

```
.border, #border, table{ border:4px solid rgb(185, 126, 123) }
```


If only the border color should be changed use the property `border-color`.

```
.border{ border-color:rgb(185, 126, 123) }
```

If you want to add a box shadow in that color use:



Here you see how a box with a 4 pixel `rgb(185, 126, 123)` colored shadow looks like.

```
.boxshadow{ -moz-box-shadow:4px 4px 4px  
4px rgb(185, 126, 123); -webkit-box-  
shadow:4px 4px 4px 4px rgb(185, 126, 123);  
box-shadow:4px 4px 4px 4px rgb(185, 126,  
123) }
```

Background

The CSS property to change the background color of an element to XYZ 31.0436, 26.6661, 22.2498 is called "background". The background property can be set on classes, ids or directly on the HTML element.

```
.background, #background, body{  
background: rgb(185, 126, 123) }
```

If only the background color should be changed can be used:

```
.background{ background-color: rgb(185,  
126, 123) }
```

This example shows the color as background, it is applied via the CSS property "background".

To optimize and compress your CSS code, you can use our [online CSS compressor and optimizer](#) based on csstidy. If you want to create a linear or radial gradient as background or border, check our [CSS Gradient Generator](#).

Hey! You found this booklet interesting? Support Converting Colors with the new Membership Option!

The pro membership hides all ads, plus gives you double the colors in the color bucket, and more awesome pro features!

[Learn more, Memberships starting at \\$2.50/m!](#)

**Follow me
on Twitter!**

@ConvertingColor