

Converting Colors

XYZ(31.0389, 28.4704, 24.1094)

Have a look what the booklet for
XYZ(31.0389, 28.4704, 24.1094)
contains.

XYZ(31.1507, 28.4702, 24.2755)	3
<i>Conversions</i>	4
<i>Details</i>	6
<i>Harmonies</i>	12
<i>Previews</i>	24
<i>Color Blindness Simulation</i>	28
<i>CSS Examples</i>	31

Color

**XYZ(31.1507, 28.4702,
24.2755)**

Conversions

Conversions Part 1

Format	Color
Hex	B38780
RGB	179, 135, 128
RGB Percent	70%, 53%, 50%
CMY	0.2980, 0.4706, 0.4980
CMYK	0.00, 0.25, 0.28, 0.30
HSL	8°, 25%, 60%
HSV	8°, 28%, 70%
XYZ	31.1507, 28.4702, 24.2755
YIQ	147.3580, 28.4710, 7.1510

Conversions

Conversions Part 2

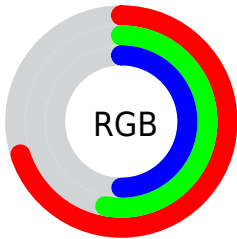
Format	Color
RYB	179, 136, 128
Decimal	11765632
CIELab	60.31, 15.80, 10.30
CIELCh	60, 18.862, 33.089
Yxy	28.4702, 0.3713, 0.3393
Android (android.graphics.Color)	4289955712 (0xFFB38780)
YUV	147.3580, -9.5435, 27.7500
Hunter-Lab	53.3575, 10.8348, 10.3757

Details

The XYZ color **31.1507, 28.4702, 24.2755** is a light color, and the websafe version is hex **CC9999**. A complement of this color would be **31.7908, 37.3477, 48.1813**, and the grayscale version is **27.9121, 29.3657, 31.9792**.

A 20% lighter version of the original color is **60.9158, 57.1355, 51.5337**, and **13.1172, 11.4215, 8.9103** is the 20% darker color. If you saturate the color by 10%, you get **28.0745, 24.0398, 17.9411**, and if you desaturate by 10%, it is **34.7488, 33.6115, 31.8099**.

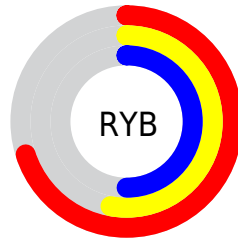
Distribution



Red (70%)

Green (53%)

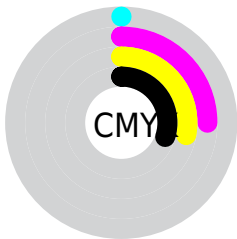
Blue (50%)



Red (70%)

Yellow (53%)

Blue (50%)

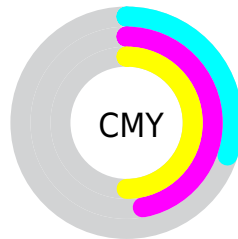


Cyan (0%)

Magenta (25%)

Yellow (28%)

Black (30%)



Cyan (30%)


Magenta (47%)


Yellow (50%)

Brightness & Saturation Gradients


These gradients show how the XYZ color 31.1507, 28.4702, 24.2755 changes by changing the brightness by 10 percent. The first figure shows a shift by +10% for each color and the second figure -10%.


Similar to the brightness gradients but the following saturation gradients show a change of the XYZ color 31.1507, 28.4702, 24.2755 by changing the saturation by 10% instead.


 31.1507, 28.4702,
24.2755


 31.1507, 28.4702,
24.2755


299.0465,
294.7069, 287.5417


 20.8660, 18.6804,
15.3240


 60.8515, 57.2343,
51.4289

 13.1380, 11.4396,
8.8980


 80.9983, 76.9773,
70.4678

 7.6013, 6.3633,
4.5788

 105.1632,
100.8069, 93.7064

 3.8906, 3.0672,
1.9479

133.7115,
129.1075, 121.5630

 1.6404, 1.1669,
0.5230

167.0087,
162.2634, 154.4563

 0.4185, 0.0344,
0.0000

205.4200,

 0.0000, 0.0000,

200.6590, 192.8049

0.0000

249.3108,
244.6787, 237.0271

■ 31.1507, 28.4702,
24.2755

■ 31.1507, 28.4702,
24.2755

■ 28.0745, 24.0398,
17.9411

■ 34.7488, 33.6115,
31.8099

■ 25.4936, 20.2850,
12.7430

■ 38.8893, 39.4887,
40.6002

■ 23.3824, 17.1737,
8.6143

■ 43.5942, 46.1310,
50.7006

■ 21.7123, 14.6695,
5.4801

■ 48.8838, 53.5643,
62.1619

■ 20.4512, 12.7325,
3.2561

■ 54.7771, 61.8136,
75.0320

■ 19.5627, 11.3176,
1.8436

■ 61.2927, 70.9026,
89.3566

■ 18.9952, 10.3695,
1.0779

■ 68.4479, 80.8544,
105.1791

■ 18.9293, 10.2613,
0.9829

■ 72.4005, 88.3238,
107.8400

Harmonies

Analogous

The Analogous color harmony consists of three colors that are next to each other on the color wheel.



31.9798, 28.4702, 30.2864



31.1507, 28.4702, 24.2755



29.2222, 28.4702, 20.5658

Triad

The Triadic color harmony groups three colors that are evenly spaced from another and form a triangle on the color wheel.



31.1507, 28.4702, 24.2755



23.1176, 28.4702, 25.3480



27.3117, 28.4702, 46.3086

Complementary

The Complementary color scheme is a pair of colors which are on the opposite of each other on the color wheel.



31.1507, 28.4702, 24.2755



31.7908, 37.3477, 48.1813

Split Complementary

Split-complementary colors differ from the complementary color scheme. The scheme consists of three colors, the original color and two neighbors of the complement color.



25.0073, 28.4702, 44.4721



31.1507, 28.4702, 24.2755



22.6727, 28.4702, 31.7231

Square

The Square scheme is like the rectangle color scheme, but the four colors are evenly spaced on the color wheel.



31.1507, 28.4702, 24.2755



24.5974, 28.4702, 21.1171



23.3442, 28.4702, 38.8622



29.6819, 28.4702, 43.5646

Rectangle

The Rectangle color scheme consists of four colors that form a rectangle on the color wheel.



31.1507, 28.4702, 24.2755



27.6241, 28.4702, 19.5582



23.3442, 28.4702, 38.8622



26.5038, 28.4702, 46.2074

Sweetspot

The Sweet Spot groups the original color and five complimentary colors.



31.1515, 28.4715, 24.2761



69.1286, 69.9858, 71.6020



33.7755, 28.0086, 42.7568



15.0669, 15.1532, 15.3334



86.6293, 91.1408, 99.2523



17.0014, 17.8868, 19.4787

Same Dimension

The Same Dimension uses a secret algorithm to generate beautiful new colors.



31.1515, 28.4715, 24.2761



52.3307, 46.0157, 36.3271



35.1098, 36.3882, 25.5955



8.5874, 8.6873, 8.8767



13.4052, 7.3091, 0.7043



0.4514, 0.2891, 0.0320

Inverse Universe

The Inverse Universe completely reimagines the original color for something new.



31.7908, 37.3477, 48.1813



53.6516, 64.4428, 85.9921



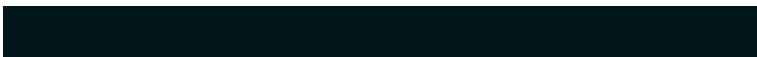
27.4262, 28.6184, 46.7264



8.6412, 9.4286, 10.8708



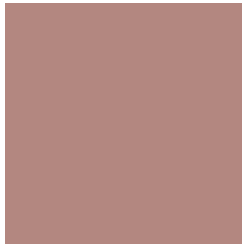
13.9995, 18.7993, 33.0278



0.4678, 0.6461, 1.0483

Previews

White Background



This preview shows how the XYZ color 31.1507, 28.4702, 24.2755 looks on a white background.

Color Contrast Check

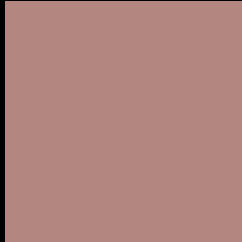
Large Text (above 18pt) WCAG AA ✓ Pass

Any Text WCAG AA ✗ Fail

Large Text (above 18pt) WCAG AAA ✗ Fail

Any Text WCAG AAA ✗ Fail

Black Background



This preview shows how the XYZ color 31.1507, 28.4702, 24.2755 looks on a black background.

Color Contrast Check

Large Text (above 18pt) WCAG AA ✓ Pass

Any Text WCAG AA ✓ Pass

Large Text (above 18pt) WCAG AAA ✓ Pass

Any Text WCAG AAA × Fail

If you want to check with other color combinations, try the [Color Contrast Checker](#).

XYZ 31.1507, 28.4702, 24.2755

Background



This preview shows how black text looks on a background with the XYZ color 31.1507, 28.4702, 24.2755.



This preview shows how white text looks on a background with the XYZ color 31.1507, 28.4702,

Color Blindness Simulation

Color vision deficiency is a very complex topic, and I could not describe the different causes any better than Wikipedia does, so if you want to learn more, you should check out their [article about color blindness](#).

Dichromacy



Original Color

31.1507, 28.4702, 24.2755

Protanopia

27.1215, 28.5236, 26.2664

Deuteranopia

28.9347, 28.3955, 24.0345



Tritanopia

32.4015, 28.5820, 29.7957

Trichromacy



Original Color

31.1507, 28.4702, 24.2755

Protanomaly

28.3196, 28.2655, 25.4359

Deuteranomaly

29.7138, 28.3672, 23.9880

Tritanomaly

31.9349, 28.5885, 27.8797

Monochromacy



Original Color

31.1507, 28.4702, 24.2755

Achromatopsia

27.7328, 29.1771, 31.7738

Achromatomaly

28.8542, 28.9093, 28.8702

CSS Examples

Text

The CSS property to change the color of the text to XYZ 31.1507, 28.4702, 24.2755 is called "color". The color property can be set on classes, ids or directly on the HTML element.

This example shows how text in the color `rgb(179, 135, 128)` looks like.

```
.text, #text, p{  
    color:rgb(179, 135, 128)  
}
```

If you want to add a text shadow in that color use the text-shadow property, you can generate a text shadow directly with our [CSS Text Shadow Generator](#).

Here you see how black text with a 4 pixel rgb(179, 135, 128) colored shadow looks like.

```
.shadow{ text-shadow: 4px 4px 2px rgb(179, 135, 128) }
```

Border

The CSS property to change the border of an element to XYZ 31.1507, 28.4702, 24.2755 is called "border". The border property can be set on classes, ids or directly on the HTML element.

This example shows the color as border, it can be applied via the CSS property "border" or "border-color".

```
.border, #border, table{ border:4px solid rgb(179, 135, 128) }
```


If only the border color should be changed use the property `border-color`.

```
.border{ border-color:rgb(179, 135, 128) }
```

If you want to add a box shadow in that color use:

Here you see how a box with a 4 pixel `rgb(179, 135, 128)` colored shadow looks like.

```
.boxshadow{ -moz-box-shadow:4px 4px 4px  
4px rgb(179, 135, 128); -webkit-box-  
shadow:4px 4px 4px 4px rgb(179, 135, 128);  
box-shadow:4px 4px 4px 4px rgb(179, 135,  
128) }
```

Background

The CSS property to change the background color of an element to XYZ 31.1507, 28.4702, 24.2755 is called "background". The background property can be set on classes, ids or directly on the HTML element.

```
.background, #background, body{  
background: rgb(179, 135, 128) }
```

If only the background color should be changed can be used:

```
.background{ background-color: rgb(179,  
135, 128) }
```

This example shows the color as background, it is applied via the CSS property "background".

To optimize and compress your CSS code, you can use our [online CSS compressor and optimizer](#) based on csstidy. If you want to create a linear or radial gradient as background or border, check our [CSS Gradient Generator](#).

Hey! You found this booklet interesting? Support Converting Colors with the new Membership Option!

The pro membership hides all ads, plus gives you double the colors in the color bucket, and more awesome pro features!

[Learn more, Memberships starting at \\$2.50/m!](#)

**Follow me
on Twitter!**

@ConvertingColor