

Converting Colors

XYZ(31.0799, 30.8188, 26.4184)

Have a look what the booklet for
XYZ(31.0799, 30.8188, 26.4184)
contains.

XYZ(31.0901, 30.7973, 26.4961)	3
<i>Conversions</i>	4
<i>Details</i>	6
<i>Harmonies</i>	12
<i>Previews</i>	24
<i>Color Blindness Simulation</i>	28
<i>CSS Examples</i>	31

Color

**XYZ(31.0901, 30.7973,
26.4961)**

Conversions

Conversions Part 1

Format	Color
Hex	AA9285
RGB	170, 146, 133
RGB Percent	67%, 57%, 52%
CMY	0.3333, 0.4274, 0.4784
CMYK	0.00, 0.14, 0.22, 0.33
HSL	21°, 18%, 59%
HSV	21°, 22%, 67%
XYZ	31.0901, 30.7973, 26.4961
YIQ	151.6940, 18.4770, 1.0450

Conversions

Conversions Part 2

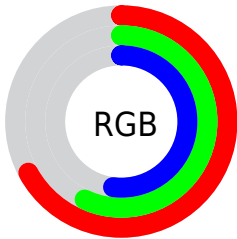
Format	Color
RYB	170, 153, 133
Decimal	11178629
CIELab	62.34, 6.85, 10.20
CIElCh	62, 12.286, 56.107
Yxy	30.7973, 0.3518, 0.3485
Android (android.graphics.Color)	4289368709 (0xFFAA9285)
YUV	151.6940, -9.2161, 16.0544
Hunter-Lab	55.4953, 2.8841, 10.5389

Details

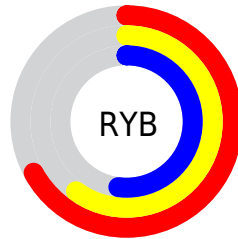
The XYZ color **31.0901, 30.7973, 26.4961** is a light color, and the websafe version is hex **999999**. A complement of this color would be **28.9852, 32.0019, 42.6797**, and the grayscale version is **29.7467, 31.2959, 34.0812**.

A 20% lighter version of the original color is **60.8812, 61.0225, 55.0241**, and **13.0803, 12.7722, 9.9595** is the 20% darker color. If you saturate the color by 10%, you get **28.3911, 27.1291, 20.2634**, and if you desaturate by 10%, it is **34.1448, 34.8722, 33.7860**.

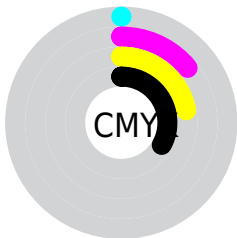
Distribution



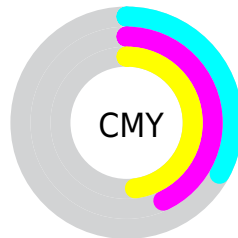
- Red (67%)
- Green (57%)
- Blue (52%)



- Red (67%)
- Yellow (60%)
- Blue (52%)



- Cyan (0%)
- Magenta (14%)
- Yellow (22%)
- Black (33%)



- Cyan (33%)
- Magenta (43%)
- Yellow (48%)

Brightness & Saturation Gradients

These gradients show how the XYZ color 31.0901, 30.7973, 26.4961 changes by changing the brightness by 10 percent. The first figure shows a shift by +10% for each color and the second figure -10%.

Similar to the brightness gradients but the following saturation gradients show a change of the XYZ color 31.0901, 30.7973, 26.4961 by changing the saturation by 10% instead.

■ 31.0901, 30.7973,
26.4961

■ 31.0901, 30.7973,
26.4961

298.7727,
305.6034, 298.8916

■ 20.8196, 20.4445,
16.9661

■ 60.7568, 60.9208,
55.0681

■ 13.1039, 12.7186,
10.0486

■ 80.8837, 81.4603,
74.9471

■ 7.5776, 7.2351,
5.3252

■ 105.0268,
106.1643, 99.1128

■ 3.8754, 3.6095,
2.3772

133.5515,
135.4169, 127.9839

■ 1.6319, 1.4576,
0.7740

166.8230,
169.6028, 161.9787

■ 0.4131, 0.2586,
0.0000

205.2068,

■ 0.0000, 0.0000,

209.1062, 201.5159

0.0000

249.0683,
254.3116, 247.0140

■ 31.0901, 30.7973,
26.4961

■ 31.0901, 30.7973,
26.4961

■ 28.3911, 27.1291,
20.2634

■ 34.1448, 34.8722,
33.7860

■ 26.0317, 23.8506,
15.0362

■ 37.5656, 39.3618,
42.1774

■ 23.9978, 20.9495,
10.7617

■ 41.3658, 44.2794,
51.7146

■ 22.2736, 18.4114,
7.3810

■ 45.5569, 49.6361,
62.4387

■ 20.8418, 16.2207,
4.8288

■ 50.1500, 55.4427,
74.3888

■ 19.6828, 14.3607,
3.0309

■ 55.1560, 61.7098,
87.6024

■ 18.7744, 12.8127,
1.8991

■ 60.5850, 68.4473,
102.1150

■ 18.1803, 11.7513,
1.3100

■ 64.1097, 74.7301,
105.6532

■ 67.3507, 81.2121,
106.7335

Harmonies

Analogous

The Analogous color harmony consists of three colors that are next to each other on the color wheel.



32.2359, 30.7973, 29.6652



31.0901, 30.7973, 26.4961



29.4894, 30.7973, 25.2067

Triad

The Triadic color harmony groups three colors that are evenly spaced from another and form a triangle on the color wheel.



31.0901, 30.7973, 26.4961



26.1984, 30.7973, 32.9156



30.7006, 30.7973, 42.4398

Complementary

The Complementary color scheme is a pair of colors which are on the opposite of each other on the color wheel.



31.0901, 30.7973, 26.4961



28.9852, 32.0019, 42.6797

Split Complementary

Split-complementary colors differ from the complementary color scheme. The scheme consists of three colors, the original color and two neighbors of the complement color.



29.0555, 30.7973, 43.5165



31.0901, 30.7973, 26.4961



26.4954, 30.7973, 37.7233

Square

The Square scheme is like the rectangle color scheme, but the four colors are evenly spaced on the color wheel.



31.0901, 30.7973, 26.4961



26.6989, 30.7973, 28.6846



27.5260, 30.7973, 41.7171



32.0051, 30.7973, 38.8992

Rectangle

The Rectangle color scheme consists of four colors that form a rectangle on the color wheel.



31.0901, 30.7973, 26.4961



28.3943, 30.7973, 25.4873



27.5260, 30.7973, 41.7171



30.1674, 30.7973, 43.1155

Sweetspot

The Sweet Spot groups the original color and five complimentary colors.



31.0909, 30.7987, 26.4967



64.7459, 66.9539, 68.1078



31.0555, 27.7575, 35.6419



14.3602, 14.8279, 14.9962



82.5889, 86.8899, 94.6231



15.4596, 16.2647, 17.7123

Same Dimension

The Same Dimension uses a secret algorithm to generate beautiful new colors.



31.0909, 30.7987, 26.4967



54.0266, 52.6568, 42.5183



34.1676, 36.9520, 27.5223



7.7388, 7.9576, 7.9174



13.4217, 8.7407, 0.9797



0.3745, 0.3086, 0.0398

Inverse Universe

The Inverse Universe completely reimagines the original color for something new.



28.9852, 32.0019, 42.6797



49.5311, 55.2198, 77.0498



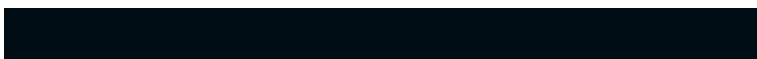
26.0965, 26.2244, 41.7168



7.5224, 8.0816, 9.5818



9.5130, 10.4863, 29.4982



0.2767, 0.3457, 0.7328

Previews

White Background



This preview shows how the XYZ color 31.0901, 30.7973, 26.4961 looks on a white background.

Color Contrast Check

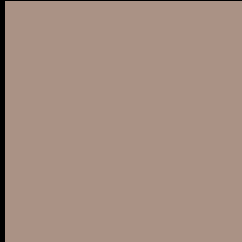
Large Text (above 18pt) WCAG AA × Fail

Any Text WCAG AA × Fail

Large Text (above 18pt) WCAG AAA × Fail

Any Text WCAG AAA × Fail

Black Background



This preview shows how the XYZ color 31.0901, 30.7973, 26.4961 looks on a black background.

Color Contrast Check

Large Text (above 18pt) WCAG AA ✓ Pass

Any Text WCAG AA ✓ Pass

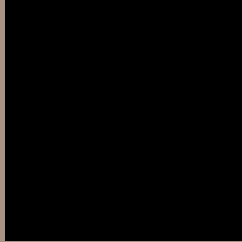
Large Text (above 18pt) WCAG AAA ✓ Pass

Any Text WCAG AAA ✓ Pass

If you want to check with other color combinations, try the [Color Contrast Checker](#).

XYZ 31.0901, 30.7973, 26.4961

Background



This preview shows how black text looks on a background with the XYZ color 31.0901, 30.7973, 26.4961.



This preview shows how white text looks on a background with the XYZ color 31.0901, 30.7973,

Color Blindness Simulation

Color vision deficiency is a very complex topic, and I could not describe the different causes any better than Wikipedia does, so if you want to learn more, you should check out their [article about color blindness](#).

Dichromacy



Original Color

31.0901, 30.7973, 26.4961

Protanopia

29.1841, 30.7301, 27.3150

Deuteranopia

31.3723, 30.7149, 26.4654



Tritanopia

32.8888, 30.8623, 34.7954

Trichromacy



Original Color

31.0901, 30.7973, 26.4961

Protanomaly

29.9508, 30.8975, 26.9395

Deuteranomaly

31.1536, 30.6022, 26.4551

Tritanomaly

32.1748, 30.7925, 31.4419

Monochromacy



Original Color

31.0901, 30.7973, 26.4961

Achromatopsia

29.8446, 31.3989, 34.1934

Achromatomaly

30.3153, 31.2280, 31.2179

CSS Examples

Text

The CSS property to change the color of the text to XYZ 31.0901, 30.7973, 26.4961 is called "color". The color property can be set on classes, ids or directly on the HTML element.

This example shows how text in the color `rgb(170, 146, 133)` looks like.

```
.text, #text, p{  
    color:rgb(170, 146, 133)  
}
```

If you want to add a text shadow in that color use the text-shadow property, you can generate a text shadow directly with our [CSS Text Shadow Generator](#).

Here you see how black text with a 4 pixel rgb(170, 146, 133) colored shadow looks like.

```
.shadow{ text-shadow: 4px 4px 2px rgb(170, 146, 133) }
```

Border

The CSS property to change the border of an element to XYZ 31.0901, 30.7973, 26.4961 is called "border". The border property can be set on classes, ids or directly on the HTML element.

This example shows the color as border, it can be applied via the CSS property "border" or "border-color".

```
.border, #border, table{ border:4px solid rgb(170, 146, 133) }
```


If only the border color should be changed use the property `border-color`.

```
.border{ border-color:rgb(170, 146, 133) }
```

If you want to add a box shadow in that color use:

Here you see how a box with a 4 pixel `rgb(170, 146, 133)` colored shadow looks like.

```
.boxshadow{ -moz-box-shadow:4px 4px 4px  
4px rgb(170, 146, 133); -webkit-box-  
shadow:4px 4px 4px 4px rgb(170, 146, 133);  
box-shadow:4px 4px 4px 4px rgb(170, 146,  
133) }
```

Background

The CSS property to change the background color of an element to XYZ 31.0901, 30.7973, 26.4961 is called "background". The background property can be set on classes, ids or directly on the HTML element.

```
.background, #background, body{  
background: rgb(170, 146, 133) }
```

If only the background color should be changed can be used:

```
.background{ background-color: rgb(170,  
146, 133) }
```

This example shows the color as background, it is applied via the CSS property "background".

To optimize and compress your CSS code, you can use our [online CSS compressor and optimizer](#) based on csstidy. If you want to create a linear or radial gradient as background or border, check our [CSS Gradient Generator](#).

Hey! You found this booklet interesting? Support Converting Colors with the new Membership Option!

The pro membership hides all ads, plus gives you double the colors in the color bucket, and more awesome pro features!

[Learn more, Memberships starting at \\$2.50/m!](#)

**Follow me
on Twitter!**

@ConvertingColor