

# Converting Colors

XYZ(31.1067, 29.4024, 21.6764)

Have a look what the booklet for  
XYZ(31.1067, 29.4024, 21.6764)  
contains.

<b>XYZ(31.2132, 29.4050, 21.7999)</b> .....	3
<b><i>Conversions</i></b> .....	4
<b><i>Details</i></b> .....	6
<b><i>Harmonies</i></b> .....	12
<b><i>Previews</i></b> .....	24
<b><i>Color Blindness Simulation</i></b> .....	28
<b><i>CSS Examples</i></b> .....	31

# Color

**XYZ(31.2132, 29.4050,  
21.7999)**

# Conversions

## Conversions Part 1

<b>Format</b>	<b>Color</b>
Hex	B38B78
RGB	179, 139, 120
RGB Percent	70%, 55%, 47%
CMY	0.2980, 0.4549, 0.5294
CMYK	0.00, 0.22, 0.33, 0.30
HSL	19°, 28%, 59%
HSV	19°, 33%, 70%
XYZ	31.2132, 29.4050, 21.7999
YIQ	148.7940, 29.9390, 2.5710

# Conversions

## Conversions Part 2

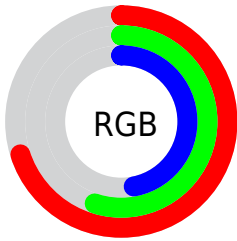
<b>Format</b>	<b>Color</b>
<b>R<sub>YB</sub></b>	179, 148, 120
Decimal	11766648
CIE <sub>Lab</sub>	61.14, 12.47, 15.99
CIE <sub>LCh</sub>	61, 20.281, 52.051
Yxy	29.4050, 0.3787, 0.3568
Android (android.graphics.Color)	4289956728 (0xFFB38B78)
YUV	148.7940, -14.1954, 26.4907
Hunter-Lab	54.2264, 7.8501, 14.1229

# Details

The XYZ color **31.2132, 29.4050, 21.7999** is a dark color, and the websafe version is hex **CC9999**. A complement of this color would be **28.4528, 32.3883, 47.3999**, and the grayscale version is **28.5301, 30.0158, 32.6873**.

A 20% lighter version of the original color is **61.1084, 58.9514, 47.1877**, and **13.1672, 11.9597, 7.5757** is the 20% darker color. If you saturate the color by 10%, you get **28.5663, 25.6902, 16.0498**, and if you desaturate by 10%, it is **34.2597, 33.5938, 28.6858**.

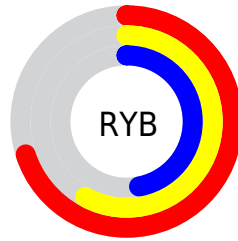
# Distribution



Red (70%)

Green (55%)

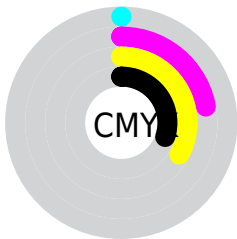
Blue (47%)



Red (70%)

Yellow (58%)

Blue (47%)

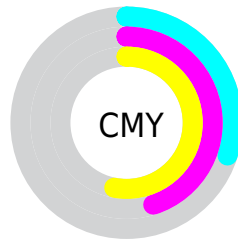


Cyan (0%)

Magenta (22%)

Yellow (33%)

Black (30%)



Cyan (30%)

Magenta (45%)

Yellow (53%)

# Brightness & Saturation Gradients

These gradients show how the XYZ color 31.2132, 29.4050, 21.7999 changes by changing the brightness by 10 percent. The first figure shows a shift by +10% for each color and the second figure -10%.

Similar to the brightness gradients but the following saturation gradients show a change of the XYZ color 31.2132, 29.4050, 21.7999 by changing the saturation by 10% instead.



■ 31.2132, 29.4050,  
21.7999

■ 31.2132, 29.4050,  
21.7999

299.3287,  
299.1211, 274.4188

■ 20.9139, 19.3874,  
13.5130

■ 60.9491, 58.7199,  
47.3130

■ 13.1732, 11.9505,  
7.6479

■ 81.1165, 78.7861,  
65.3763

■ 7.6257, 6.7100,  
3.7860

■ 105.3038,  
102.9705, 87.5355

■ 3.9062, 3.2814,  
1.5087

133.8766,  
131.6577, 114.2091

■ 1.6492, 1.2804,  
0.2244

167.2001,  
165.2319, 145.8158

■ 0.4241, 0.1259,  
0.0000

205.6397,

■ 0.0000, 0.0000,

204.0776, 182.7739

0.0000

249.5608,  
248.5792, 225.5021

■ 31.2132, 29.4050,  
21.7999

■ 31.2132, 29.4050,  
21.7999

■ 28.5663, 25.6902,  
16.0498

■ 34.2597, 33.5938,  
28.6858

■ 26.2992, 22.4282,  
11.3718

■ 37.7202, 38.2689,  
36.7629

■ 24.3934, 19.6020,  
7.6988

■ 41.6108, 43.4471,  
46.0848

■ 22.8279, 17.1918,  
4.9551

■ 45.9464, 49.1431,  
56.7017

■ 21.5793, 15.1761,  
3.0540

■ 50.7408, 55.3711,  
68.6608

■ 20.6203, 13.5313,  
1.8924

■ 56.0074, 62.1447,  
82.0070

■ 20.0862, 12.5752,  
1.3686

■ 61.7590, 69.4769,  
96.7829

■ 66.6591, 76.8409,  
105.9262

■ 70.2740, 84.0707,  
107.1312

# Harmonies

## Analogous

The Analogous color harmony consists of three colors that are next to each other on the color wheel.



32.9620, 29.4050, 26.8267



31.2132, 29.4050, 21.7999



28.6618, 29.4050, 19.5910

# Triad

The Triadic color harmony groups three colors that are evenly spaced from another and form a triangle on the color wheel.



31.2132, 29.4050, 21.7999



23.1831, 29.4050, 30.0339



29.9130, 29.4050, 47.6023

# Complementary

The Complementary color scheme is a pair of colors which are on the opposite of each other on the color wheel.



31.2132, 29.4050, 21.7999



28.4528, 32.3883, 47.3999

# Split Complementary

Split-complementary colors differ from the complementary color scheme. The scheme consists of three colors, the original color and two neighbors of the complement color.



27.2473, 29.4050, 48.8251



31.2132, 29.4050, 21.7999



23.4712, 29.4050, 37.8371

# Square

The Square scheme is like the rectangle color scheme, but the four colors are evenly spaced on the color wheel.



31.2132, 29.4050, 21.7999



24.1064, 29.4050, 23.8278



24.9199, 29.4050, 45.0121



32.1788, 29.4050, 41.8957



# Rectangle

The Rectangle color scheme consists of four colors that form a rectangle on the color wheel.



31.2132, 29.4050, 21.7999



26.8943, 29.4050, 19.7225



24.9199, 29.4050, 45.0121



29.0301, 29.4050, 48.5842

# Sweetspot

The Sweet Spot groups the original color and five complimentary colors.



31.2140, 29.4064, 21.8005



69.4221, 71.0354, 70.2733



31.6800, 25.5661, 36.6684



15.1730, 15.4606, 15.0755



86.6293, 91.1408, 99.2523



17.0014, 17.8868, 19.4787



# Same Dimension

The Same Dimension uses a secret algorithm to generate beautiful new colors.



31.2140, 29.4064, 21.8005



52.1836, 47.4582, 30.9243



36.0173, 39.0130, 23.4016



8.7124, 8.9374, 8.9184



14.2470, 8.9925, 0.9848



0.5025, 0.3914, 0.0491



# Inverse Universe

The Inverse Universe completely reimagines the original color for something new.



28.4528, 32.3883, 47.3999



46.4149, 53.6507, 84.2905



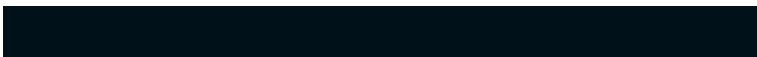
23.9744, 23.4315, 45.9071



8.5073, 9.1608, 10.8262



10.6719, 12.1441, 31.9186



0.3858, 0.4822, 1.0210



# Previews

## White Background



This preview shows how the XYZ color 31.2132, 29.4050, 21.7999 looks on a white background.

## Color Contrast Check

Large Text (above 18pt) WCAG AA ✓ Pass

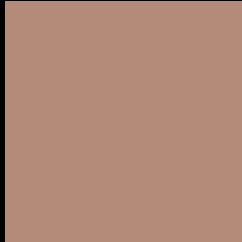
Any Text WCAG AA × Fail

Large Text (above 18pt) WCAG AAA × Fail

Any Text WCAG AAA × Fail



# Black Background



This preview shows how the XYZ color 31.2132, 29.4050, 21.7999 looks on a black background.

## Color Contrast Check

Large Text (above 18pt) WCAG AA ✓ Pass

Any Text WCAG AA ✓ Pass

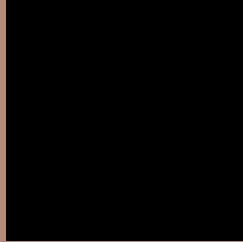
Large Text (above 18pt) WCAG AAA ✓ Pass

Any Text WCAG AAA × Fail

If you want to check with other color combinations, try the [Color Contrast Checker](#).

**XYZ 31.2132, 29.4050, 21.7999**

## **Background**



This preview shows how black text looks on a background with the XYZ color 31.2132, 29.4050, 21.7999.



This preview shows how white text looks on a background with the XYZ color 31.2132, 29.4050,

21.7999.

# Color Blindness Simulation

Color vision deficiency is a very complex topic, and I could not describe the different causes any better than Wikipedia does, so if you want to learn more, you should check out their [article about color blindness](#).

## Dichromacy



### Original Color

31.2132, 29.4050, 21.7999

### Protanopia

27.7821, 29.3906, 23.2775

### Deuteranopia

30.0160, 29.4486, 21.5549



## Tritanopia

33.1437, 29.3484, 31.1121

# Trichromacy



## Original Color

31.2132, 29.4050, 21.7999

## Protanomaly

28.8583, 29.2691, 22.8674

## Deuteranomaly

30.5338, 29.4956, 21.5367

## Tritanomaly

32.3756, 29.2382, 27.6041

# Monochromacy



## Original Color

31.2132, 29.4050, 21.7999

## Achromatopsia

28.5667, 30.0544, 32.7292

## Achromatomaly

29.2100, 29.5594, 28.2107

# CSS Examples

## Text

The CSS property to change the color of the text to XYZ 31.2132, 29.4050, 21.7999 is called "color". The color property can be set on classes, ids or directly on the HTML element.

This example shows how text in the color `rgb(179, 139, 120)` looks like.

```
.text, #text, p{  
    color:rgb(179, 139, 120)  
}
```

If you want to add a text shadow in that color use the text-shadow property, you can generate a text shadow directly with our [CSS Text Shadow Generator](#).

Here you see how black text with a 4 pixel rgb(179, 139, 120) colored shadow looks like.

```
.shadow{ text-shadow: 4px 4px 2px rgb(179, 139, 120) }
```

## Border

The CSS property to change the border of an element to XYZ 31.2132, 29.4050, 21.7999 is called "border". The border property can be set on classes, ids or directly on the HTML element.

This example shows the color as border, it can be applied via the CSS property "border" or "border-color".

```
.border, #border, table{ border:4px solid rgb(179, 139, 120) }
```



If only the border color should be changed use the property `border-color`.

```
.border{ border-color:rgb(179, 139, 120) }
```

If you want to add a box shadow in that color use:

Here you see how a box with a 4 pixel `rgb(179, 139, 120)` colored shadow looks like.

```
.boxshadow{ -moz-box-shadow:4px 4px 4px  
4px rgb(179, 139, 120); -webkit-box-  
shadow:4px 4px 4px 4px rgb(179, 139, 120);  
box-shadow:4px 4px 4px 4px rgb(179, 139,  
120) }
```

# Background

The CSS property to change the background color of an element to XYZ 31.2132, 29.4050, 21.7999 is called "background". The background property can be set on classes, ids or directly on the HTML element.

```
.background, #background, body{  
background: rgb(179, 139, 120) }
```

If only the background color should be changed can be used:

```
.background{ background-color: rgb(179,  
139, 120) }
```

This example shows the color as background, it is applied via the CSS property "background".

To optimize and compress your CSS code, you can use our [online CSS compressor and optimizer](#) based on csstidy. If you want to create a linear or radial gradient as background or border, check our [CSS Gradient Generator](#).

Hey! You found this booklet interesting? Support Converting Colors with the new Membership Option!

The pro membership hides all ads, plus gives you double the colors in the color bucket, and more awesome pro features!

**[Learn more, Memberships starting at \\$2.50/m!](#)**

**Follow me  
on Twitter!**

@ConvertingColor