

Converting Colors

XYZ(31.1257, 27.7135, 22.4707)

Have a look what the booklet for
XYZ(31.1257, 27.7135, 22.4707)
contains.

XYZ(30.9829, 27.6077, 22.4347)	3
<i>Conversions</i>	4
<i>Details</i>	6
<i>Harmonies</i>	12
<i>Previews</i>	24
<i>Color Blindness Simulation</i>	28
<i>CSS Examples</i>	31

Color

**XYZ(30.9829, 27.6077,
22.4347)**

Conversions

Conversions Part 1

Format	Color
Hex	B6837B
RGB	182, 131, 123
RGB Percent	71%, 51%, 48%
CMY	0.2863, 0.4863, 0.5176
CMYK	0.00, 0.28, 0.32, 0.29
HSL	8°, 29%, 60%
HSV	8°, 32%, 71%
XYZ	30.9829, 27.6077, 22.4347
YIQ	145.3370, 32.9640, 8.3240

Conversions

Conversions Part 2

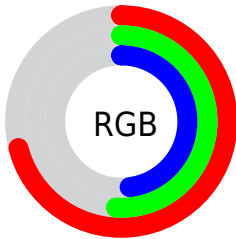
Format	Color
R_{YB}	182, 132, 123
Decimal	11961211
CIE _{Lab}	59.53, 18.54, 12.10
CIE _{LCh}	60, 22.139, 33.135
Yxy	27.6077, 0.3824, 0.3407
Android (android.graphics.Color)	4290151291 (0xFFB6837B)
YUV	145.3370, -11.0121, 32.1535
Hunter-Lab	52.5430, 13.3053, 11.4646

Details

The XYZ color **30.9829, 27.6077, 22.4347** is a dark color, and the websafe version is hex **CC9999**. A complement of this color would be **31.7476, 37.8594, 49.8906**, and the grayscale version is **27.0854, 28.4959, 31.0320**.

A 20% lighter version of the original color is **60.4750, 55.7268, 48.1264**, and **13.0805, 10.9685, 7.9063** is the 20% darker color. If you saturate the color by 10%, you get **27.9930, 23.2849, 16.3300**, and if you desaturate by 10%, it is **34.5069, 32.6595, 29.7630**.

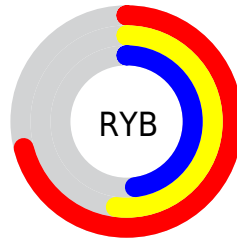
Distribution



Red (71%)

Green (51%)

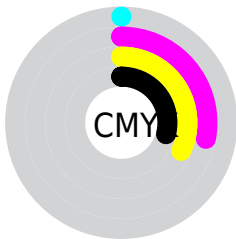
Blue (48%)



Red (71%)

Yellow (52%)

Blue (48%)

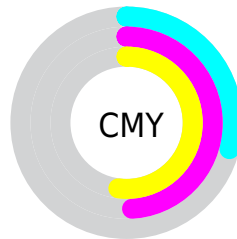


Cyan (0%)

Magenta (28%)

Yellow (32%)

Black (29%)



Cyan (29%)

Magenta (49%)

Yellow (52%)

Brightness & Saturation Gradients

These gradients show how the XYZ color 30.9829, 27.6077, 22.4347 changes by changing the brightness by 10 percent. The first figure shows a shift by +10% for each color and the second figure -10%.

Similar to the brightness gradients but the following saturation gradients show a change of the XYZ color 30.9829, 27.6077, 22.4347 by changing the saturation by 10% instead.

■ 30.9829, 27.6077,
22.4347

■ 30.9829, 27.6077,
22.4347

298.2878,
290.5876, 277.8352

■ 20.7376, 18.0301,
13.9753

■ 60.5892, 55.8575,
48.3748

■ 13.0437, 10.9716,
7.9649

■ 80.6808, 75.2985,
66.6925

■ 7.5358, 6.0478,
3.9851

■ 104.7854, 98.7962,
89.1335

■ 3.8487, 2.8741,
1.6172

133.2680,
126.7349, 116.1162

■ 1.6169, 1.0664,
0.3030

166.4943,
159.4990, 148.0592

■ 0.4034, 0.0000,
0.0000

204.8294,

■ 0.0000, 0.0000,

197.4728, 185.3810

0.0000

248.6388,
241.0409, 228.5002

■ 30.9829, 27.6077,
22.4347

■ 30.9829, 27.6077,
22.4347

■ 27.9930, 23.2849,
16.3300

■ 34.5069, 32.6595,
29.7630

■ 25.5089, 19.6535,
11.3806

■ 38.5871, 38.4677,
38.3749

■ 23.5029, 16.6787,
7.5138


■ 43.2472, 45.0631,
48.3285


■ 21.9435, 14.3211,
4.6481


■ 48.5087, 52.4736,
59.6777


■ 20.7959, 12.5367,
2.6903


■ 54.3921, 60.7258,
72.4736

 20.0192, 11.2758,
1.5297

 60.9168, 69.8451,
86.7647

 19.6325, 10.6272,
1.0165

 68.1015, 79.8557,
102.5971

 73.1015, 88.6851,
107.8728

Harmonies

Analogous

The Analogous color harmony consists of three colors that are next to each other on the color wheel.



31.9564, 27.6077, 29.2294



30.9829, 27.6077, 22.4347



28.7343, 27.6077, 18.3532

Triad

The Triadic color harmony groups three colors that are evenly spaced from another and form a triangle on the color wheel.



30.9829, 27.6077, 22.4347



21.7488, 27.6077, 23.6510



26.5342, 27.6077, 48.1132

Complementary

The Complementary color scheme is a pair of colors which are on the opposite of each other on the color wheel.



30.9829, 27.6077, 22.4347



31.7476, 37.8594, 49.8906

Split Complementary

Split-complementary colors differ from the complementary color scheme. The scheme consists of three colors, the original color and two neighbors of the complement color.



23.8949, 27.6077, 45.9150



30.9829, 27.6077, 22.4347



21.2500, 27.6077, 30.9064

Square

The Square scheme is like the rectangle color scheme, but the four colors are evenly spaced on the color wheel.



30.9829, 27.6077, 22.4347



23.4217, 27.6077, 18.9633



22.0082, 27.6077, 39.2429



29.2764, 27.6077, 44.8119

Rectangle

The Rectangle color scheme consists of four colors that form a rectangle on the color wheel.



30.9829, 27.6077, 22.4347



26.8853, 27.6077, 17.2638



22.0082, 27.6077, 39.2429



25.6056, 27.6077, 47.9943

Sweetspot

The Sweet Spot groups the original color and five complimentary colors.



30.9836, 27.6090, 22.4353



71.7640, 72.3031, 73.4142



34.0277, 27.1725, 43.5643



15.6004, 15.6149, 15.6828



88.6918, 93.3107, 101.6153



17.8044, 18.7317, 20.3988

Same Dimension

The Same Dimension uses a secret algorithm to generate beautiful new colors.



30.9836, 27.6090, 22.4353



52.1521, 44.2486, 32.4435



35.5013, 36.6444, 23.9412



9.1003, 9.2035, 9.4037



13.8934, 7.5631, 0.7276



0.5216, 0.3302, 0.0362

Inverse Universe

The Inverse Universe completely reimagines the original color for something new.



31.7476, 37.8594, 49.8906



53.7437, 65.7486, 90.0939



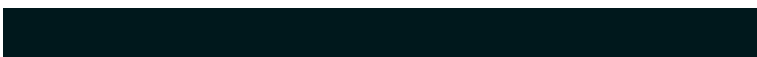
26.6816, 27.7276, 48.2019



9.1600, 9.9972, 11.5263



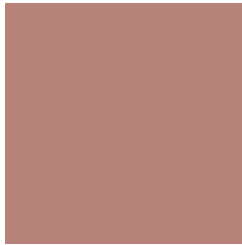
14.5500, 19.5597, 34.2616



0.5419, 0.7475, 1.2175

Previews

White Background



This preview shows how the XYZ color 30.9829, 27.6077, 22.4347 looks on a white background.

Color Contrast Check

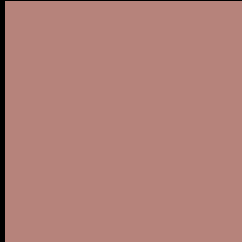
Large Text (above 18pt) WCAG AA ✓ Pass

Any Text WCAG AA × Fail

Large Text (above 18pt) WCAG AAA × Fail

Any Text WCAG AAA × Fail

Black Background



This preview shows how the XYZ color 30.9829, 27.6077, 22.4347 looks on a black background.

Color Contrast Check

Large Text (above 18pt) WCAG AA ✓ Pass

Any Text WCAG AA ✓ Pass

Large Text (above 18pt) WCAG AAA ✓ Pass

Any Text WCAG AAA × Fail

If you want to check with other color combinations, try the [Color Contrast Checker](#).

XYZ 30.9829, 27.6077, 22.4347

Background



This preview shows how black text looks on a background with the XYZ color 30.9829, 27.6077, 22.4347.



This preview shows how white text looks on a background with the XYZ color 30.9829, 27.6077,

Color Blindness Simulation

Color vision deficiency is a very complex topic, and I could not describe the different causes any better than Wikipedia does, so if you want to learn more, you should check out their [article about color blindness](#).

Dichromacy



Original Color

30.9829, 27.6077, 22.4347

Protanopia

26.3626, 27.7139, 24.7287

Deuteranopia

28.1184, 27.5814, 22.2541



Tritanopia

32.2776, 27.7549, 28.0821

Trichromacy



Original Color

30.9829, 27.6077, 22.4347

Protanomaly

27.9637, 27.6789, 23.9474

Deuteranomaly

28.9714, 27.3910, 22.1724

Tritanomaly

31.7447, 27.7260, 25.8688

Monochromacy



Original Color

30.9829, 27.6077, 22.4347

Achromatopsia

26.9133, 28.3149, 30.8349

Achromatomaly

27.9940, 27.8314, 27.5635

CSS Examples

Text

The CSS property to change the color of the text to XYZ 30.9829, 27.6077, 22.4347 is called "color". The color property can be set on classes, ids or directly on the HTML element.

This example shows how text in the color `rgb(182, 131, 123)` looks like.

```
.text, #text, p{  
    color:rgb(182, 131, 123)  
}
```

If you want to add a text shadow in that color use the text-shadow property, you can generate a text shadow directly with our [CSS Text Shadow Generator](#).

Here you see how black text with a 4 pixel rgb(182, 131, 123) colored shadow looks like.

```
.shadow{ text-shadow: 4px 4px 2px rgb(182, 131, 123) }
```

Border

The CSS property to change the border of an element to XYZ 30.9829, 27.6077, 22.4347 is called "border". The border property can be set on classes, ids or directly on the HTML element.

This example shows the color as border, it can be applied via the CSS property "border" or "border-color".

```
.border, #border, table{ border:4px solid rgb(182, 131, 123) }
```


If only the border color should be changed use the property `border-color`.

```
.border{ border-color:rgb(182, 131, 123) }
```

If you want to add a box shadow in that color use:

Here you see how a box with a 4 pixel `rgb(182, 131, 123)` colored shadow looks like.

```
.boxshadow{ -moz-box-shadow:4px 4px 4px  
4px rgb(182, 131, 123); -webkit-box-  
shadow:4px 4px 4px 4px rgb(182, 131, 123);  
box-shadow:4px 4px 4px 4px rgb(182, 131,  
123) }
```

Background

The CSS property to change the background color of an element to XYZ 30.9829, 27.6077, 22.4347 is called "background". The background property can be set on classes, ids or directly on the HTML element.

```
.background, #background, body{  
background: rgb(182, 131, 123) }
```

If only the background color should be changed can be used:

```
.background{ background-color: rgb(182,  
131, 123) }
```

This example shows the color as background, it is applied via the CSS property "background".

To optimize and compress your CSS code, you can use our [online CSS compressor and optimizer](#) based on csstidy. If you want to create a linear or radial gradient as background or border, check our [CSS Gradient Generator](#).

Hey! You found this booklet interesting? Support Converting Colors with the new Membership Option!

The pro membership hides all ads, plus gives you double the colors in the color bucket, and more awesome pro features!

[Learn more, Memberships starting at \\$2.50/m!](#)

**Follow me
on Twitter!**

@ConvertingColor