

Converting Colors

XYZ(31.1778, 27.8331, 22.7131)

Have a look what the booklet for
XYZ(31.1778, 27.8331, 22.7131)
contains.

XYZ(31.1808, 27.9028, 22.8112)	3
<i>Conversions</i>	4
<i>Details</i>	6
<i>Harmonies</i>	12
<i>Previews</i>	24
<i>Color Blindness Simulation</i>	28
<i>CSS Examples</i>	31

Color

**XYZ(31.1808, 27.9028,
22.8112)**

Conversions

Conversions Part 1

Format	Color
Hex	B6847C
RGB	182, 132, 124
RGB Percent	71%, 52%, 49%
CMY	0.2863, 0.4823, 0.5137
CMYK	0.00, 0.27, 0.32, 0.29
HSL	8°, 28%, 60%
HSV	8°, 32%, 71%
XYZ	31.1808, 27.9028, 22.8112
YIQ	146.0380, 32.3680, 8.1120

Conversions

Conversions Part 2

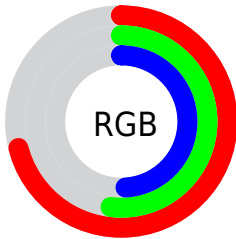
Format	Color
R _Y B	182, 133, 124
Decimal	11961468
CIE Lab	59.80, 18.11, 11.91
CIE LCh	60, 21.677, 33.318
Yxy	27.9028, 0.3807, 0.3407
Android (android.graphics.Color)	4290151548 (0xFFB6847C)
YUV	146.0380, -10.8647, 31.5387
Hunter-Lab	52.8231, 12.9258, 11.3723

Details

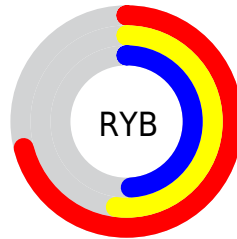
The XYZ color **31.1808, 27.9028, 22.8112** is a dark color, and the websafe version is hex **CC9999**. A complement of this color would be **31.8914, 37.9336, 49.8973**, and the grayscale version is **27.3716, 28.7971, 31.3600**.

A 20% lighter version of the original color is **60.8814, 56.2230, 49.2383**, and **13.1894, 11.1318, 8.1101** is the 20% darker color. If you saturate the color by 10%, you get **28.1645, 23.5453, 16.6418**, and if you desaturate by 10%, it is **34.7309, 32.9878, 30.2072**.

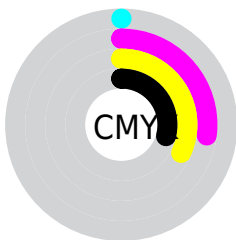
Distribution



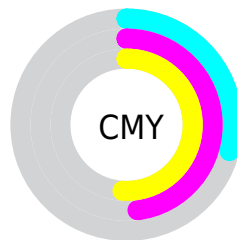
- Red (71%)
- Green (52%)
- Blue (49%)



- Red (71%)
- Yellow (52%)
- Blue (49%)



- Cyan (0%)
- Magenta (27%)
- Yellow (32%)
- Black (29%)





- Cyan (29%)
- Magenta (48%)
- Yellow (51%)

Brightness & Saturation Gradients


These gradients show how the XYZ color 31.1808, 27.9028, 22.8112 changes by changing the brightness by 10 percent. The first figure shows a shift by +10% for each color and the second figure -10%.


Similar to the brightness gradients but the following saturation gradients show a change of the XYZ color 31.1808, 27.9028, 22.8112 by changing the saturation by 10% instead.


 31.1808, 27.9028,
22.8112


 31.1808, 27.9028,
22.8112


299.1824,
292.0022, 279.8442


 20.8891, 18.2524,
14.2502


 60.8985, 56.3292,
49.0024

 13.1549, 11.1313,
8.1541

 81.0552, 75.8740,
67.4696

 7.6131, 6.1553,
4.1045


 105.2309, 99.4858,
90.0760

 3.8981, 2.9397,
1.6829

133.7910,
127.5488, 117.2401

 1.6446, 1.1003,
0.3490

167.1009,
160.4476, 149.3804

 0.4212, 0.0000,
0.0000

205.5258,

 0.0000, 0.0000,

198.5665, 186.9155

0.0000

249.4312,
242.2899, 230.2639

■ 31.1808, 27.9028,
22.8112

■ 31.1808, 27.9028,
22.8112

■ 28.1645, 23.5453,
16.6418

■ 34.7309, 32.9878,
30.2072

■ 25.6540, 19.8782,
11.6309

■ 38.8369, 38.8274,
38.8896

■ 23.6218, 16.8671,
7.7064

■ 43.5221, 45.4521,
48.9160

■ 22.0370, 14.4730,
4.7873

■ 48.8080, 52.8896,
60.3403

■ 20.8649, 12.6526,
2.7814

■ 54.7147, 61.1661,
73.2134

■ 20.0654, 11.3571,
1.5791

■ 61.2618, 70.3068,
87.5835

■ 19.6416, 10.6453,
1.0195

■ 68.4676, 80.3357,
103.4967

■ 73.1015, 88.6851,
107.8728

Harmonies

Analogous

The Analogous color harmony consists of three colors that are next to each other on the color wheel.



32.1472, 27.9028, 29.5149



31.1808, 27.9028, 22.8112



28.9624, 27.9028, 18.7768

Triad

The Triadic color harmony groups three colors that are evenly spaced from another and form a triangle on the color wheel.



31.1808, 27.9028, 22.8112



22.0784, 27.9028, 24.0861



26.8274, 27.9028, 48.1104

Complementary

The Complementary color scheme is a pair of colors which are on the opposite of each other on the color wheel.



31.1808, 27.9028, 22.8112



31.8914, 37.9336, 49.8973

Split Complementary

Split-complementary colors differ from the complementary color scheme. The scheme consists of three colors, the original color and two neighbors of the complement color.



24.2204, 27.9028, 45.9897



31.1808, 27.9028, 22.8112



21.5924, 27.9028, 31.2648

Square

The Square scheme is like the rectangle color scheme, but the four colors are evenly spaced on the color wheel.



31.1808, 27.9028, 22.8112



23.7257, 27.9028, 19.4187



22.3498, 27.9028, 39.4646



29.5271, 27.9028, 44.8459

Rectangle

The Rectangle color scheme consists of four colors that form a rectangle on the color wheel.



31.1808, 27.9028, 22.8112



27.1397, 27.9028, 17.7043



22.3498, 27.9028, 39.4646



25.9113, 27.9028, 48.0054

Sweetspot

The Sweet Spot groups the original color and five complimentary colors.



31.1815, 27.9041, 22.8118



71.7782, 72.3316, 73.4189



34.1654, 27.4272, 43.6744



15.6039, 15.6219, 15.6840



88.6918, 93.3107, 101.6153



17.8044, 18.7317, 20.3988

Same Dimension

The Same Dimension uses a secret algorithm to generate beautiful new colors.



31.1815, 27.9041, 22.8118



52.7230, 45.0955, 33.5428



35.6281, 36.7973, 24.2940



9.1019, 9.2068, 9.4043



13.9001, 7.5766, 0.7298



0.5223, 0.3316, 0.0365

Inverse Universe

The Inverse Universe completely reimagines the original color for something new.



31.8914, 37.9336, 49.8973



54.1948, 66.0257, 90.1236



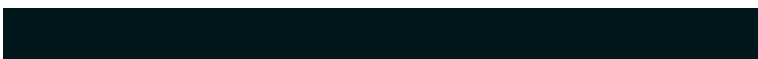
26.9222, 27.9953, 48.2409



9.1582, 9.9936, 11.5257



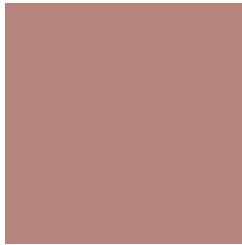
14.4997, 19.4591, 34.2448



0.5405, 0.7448, 1.2170

Previews

White Background



This preview shows how the XYZ color 31.1808, 27.9028, 22.8112 looks on a white background.

Color Contrast Check

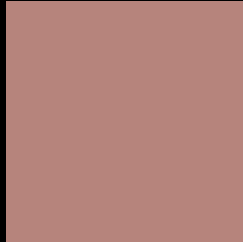
Large Text (above 18pt) WCAG AA ✓ Pass

Any Text WCAG AA × Fail

Large Text (above 18pt) WCAG AAA × Fail

Any Text WCAG AAA × Fail

Black Background



This preview shows how the XYZ color 31.1808, 27.9028, 22.8112 looks on a black background.

Color Contrast Check

Large Text (above 18pt) WCAG AA ✓ Pass

Any Text WCAG AA ✓ Pass

Large Text (above 18pt) WCAG AAA ✓ Pass

Any Text WCAG AAA × Fail

If you want to check with other color combinations, try the [Color Contrast Checker](#).

XYZ 31.1808, 27.9028, 22.8112

Background



This preview shows how black text looks on a background with the XYZ color 31.1808, 27.9028, 22.8112.



This preview shows how white text looks on a background with the XYZ color 31.1808, 27.9028,

Color Blindness Simulation

Color vision deficiency is a very complex topic, and I could not describe the different causes any better than Wikipedia does, so if you want to learn more, you should check out their [article about color blindness](#).

Dichromacy



Original Color

31.1808, 27.9028, 22.8112

Protanopia

26.5802, 28.0423, 25.1309

Deuteranopia

28.5337, 28.0023, 22.6400



Tritanopia

32.4834, 28.0491, 28.5129

Trichromacy



Original Color

31.1808, 27.9028, 22.8112

Protanomaly

28.1747, 27.9961, 24.3409

Deuteranomaly

29.3926, 27.8090, 22.5574

Tritanomaly

31.9478, 28.0211, 26.2790

Monochromacy



Original Color

31.1808, 27.9028, 22.8112

Achromatopsia

27.3213, 28.7441, 31.3023

Achromatomaly

28.4104, 28.2557, 28.0013

CSS Examples

Text

The CSS property to change the color of the text to XYZ 31.1808, 27.9028, 22.8112 is called "color". The color property can be set on classes, ids or directly on the HTML element.

This example shows how text in the color `rgb(182, 132, 124)` looks like.

```
.text, #text, p{  
    color:rgb(182, 132, 124)  
}
```

If you want to add a text shadow in that color use the text-shadow property, you can generate a text shadow directly with our [CSS Text Shadow Generator](#).

Here you see how black text with a 4 pixel rgb(182, 132, 124) colored shadow looks like.

```
.shadow{ text-shadow: 4px 4px 2px rgb(182, 132, 124) }
```

Border

The CSS property to change the border of an element to XYZ 31.1808, 27.9028, 22.8112 is called "border". The border property can be set on classes, ids or directly on the HTML element.

This example shows the color as border, it can be applied via the CSS property "border" or "border-color".

```
.border, #border, table{ border:4px solid rgb(182, 132, 124) }
```


If only the border color should be changed use the property `border-color`.

```
.border{ border-color:rgb(182, 132, 124) }
```

If you want to add a box shadow in that color use:

Here you see how a box with a 4 pixel `rgb(182, 132, 124)` colored shadow looks like.

```
.boxshadow{ -moz-box-shadow:4px 4px 4px  
4px rgb(182, 132, 124); -webkit-box-  
shadow:4px 4px 4px 4px rgb(182, 132, 124);  
box-shadow:4px 4px 4px 4px rgb(182, 132,  
124) }
```

Background

The CSS property to change the background color of an element to XYZ 31.1808, 27.9028, 22.8112 is called "background". The background property can be set on classes, ids or directly on the HTML element.

```
.background, #background, body{  
background: rgb(182, 132, 124) }
```

If only the background color should be changed can be used:

```
.background{ background-color: rgb(182,  
132, 124) }
```

This example shows the color as background, it is applied via the CSS property "background".

To optimize and compress your CSS code, you can use our [online CSS compressor and optimizer](#) based on csstidy. If you want to create a linear or radial gradient as background or border, check our [CSS Gradient Generator](#).

Hey! You found this booklet interesting? Support Converting Colors with the new Membership Option!

The pro membership hides all ads, plus gives you double the colors in the color bucket, and more awesome pro features!

[Learn more, Memberships starting at \\$2.50/m!](#)

**Follow me
on Twitter!**

@ConvertingColor