

Converting Colors

XYZ(31.1838, 31.2774, 25.3812)

Have a look what the booklet for
XYZ(31.1838, 31.2774, 25.3812)
contains.

XYZ(31.1967, 31.3376, 25.5236)	3
<i>Conversions</i>	4
<i>Details</i>	6
<i>Harmonies</i>	12
<i>Previews</i>	24
<i>Color Blindness Simulation</i>	28
<i>CSS Examples</i>	31

Color

**XYZ(31.1967, 31.3376,
25.5236)**

Conversions

Conversions Part 1

Format	Color
Hex	AA9482
RGB	170, 148, 130
RGB Percent	67%, 58%, 51%
CMY	0.3333, 0.4196, 0.4902
CMYK	0.00, 0.13, 0.24, 0.33
HSL	27°, 19%, 59%
HSV	27°, 24%, 67%
XYZ	31.1967, 31.3376, 25.5236
YIQ	152.5260, 18.8900, -0.9340

Conversions

Conversions Part 2

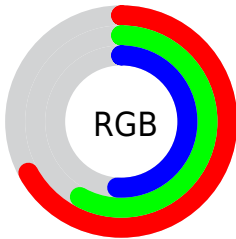
Format	Color
RYB	170, 163, 130
Decimal	11179138
CIELab	62.79, 5.28, 12.53
CIELCh	63, 13.598, 67.146
Yxy	31.3376, 0.3543, 0.3559
Android (android.graphics.Color)	4289369218 (0xFFAA9482)
YUV	152.5260, -11.1053, 15.3247
Hunter-Lab	55.9800, 1.5100, 12.1532

Details

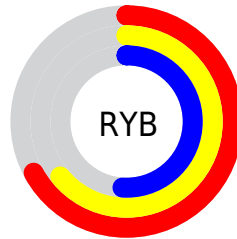
The XYZ color **31.1967, 31.3376, 25.5236** is a light color, and the websafe version is hex **999999**. A complement of this color would be **27.6895, 30.1036, 42.3814**, and the grayscale version is **30.1140, 31.6823, 34.5020**.

A 20% lighter version of the original color is **61.0318, 61.8287, 53.5172**, and **13.0960, 12.9254, 9.5892** is the 20% darker color. If you saturate the color by 10%, you get **28.7412, 28.1042, 19.5329**, and if you desaturate by 10%, it is **33.9609, 34.8862, 32.5480**.

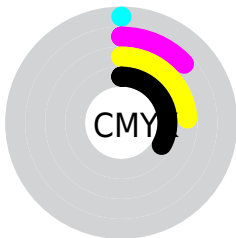
Distribution



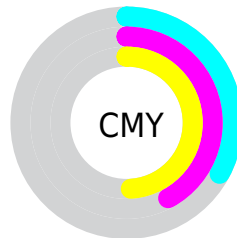
- Red (67%)
- Green (58%)
- Blue (51%)



- Red (67%)
- Yellow (64%)
- Blue (51%)



- Cyan (0%)
- Magenta (13%)
- Yellow (24%)
- Black (33%)



- Cyan (33%)
- Magenta (42%)
- Yellow (49%)

Brightness & Saturation Gradients

These gradients show how the XYZ color 31.1967, 31.3376, 25.5236 changes by changing the brightness by 10 percent. The first figure shows a shift by +10% for each color and the second figure -10%.

Similar to the brightness gradients but the following saturation gradients show a change of the XYZ color 31.1967, 31.3376, 25.5236 by changing the saturation by 10% instead.

■ 31.1967, 31.3376,
25.5236

■ 31.1967, 31.3376,
25.5236

299.2542,
308.0906, 293.9663

■ 20.9012, 20.8561,
16.2450

■ 60.9234, 61.7712,
53.4800

■ 13.1639, 13.0188,
9.5415

■ 81.0853, 82.4920,
72.9949

■ 7.6193, 7.4415,
4.9944

■ 105.2667,
107.3948, 96.7590

■ 3.9021, 3.7397,
2.1853

133.8330,
136.8638, 125.1908

■ 1.6469, 1.5291,
0.6659

167.1496,
171.2835, 158.7089

■ 0.4227, 0.3090,
0.0000

205.5817,

■ 0.0000, 0.0000,

211.0383, 197.7318

0.0000

249.4948,
256.5125, 242.6781

■ 31.1967, 31.3376,
25.5236

■ 31.1967, 31.3376,
25.5236

■ 28.7412, 28.1042,
19.5329

■ 33.9609, 34.8862,
32.5480

■ 26.5798, 25.1723,
14.5245

■ 37.0426, 38.7545,
40.6505

■ 24.7005, 22.5338,
10.4450

■ 40.4532, 42.9524,
49.8752

■ 23.0892, 20.1781,
7.2354

■ 44.2031, 47.4880,
60.2631

■ 21.7305, 18.0940,
4.8299

■ 48.3018, 52.3690,
71.8532

■ 20.6069, 16.2694,
3.1529

■ 52.7586, 57.6031,
84.6826

■ 19.6981, 14.6905,
2.1140

■ 57.5825, 63.1974,
98.7869

■ 19.1977, 13.7864,
1.6492

■ 60.9595, 68.4300,
104.6031

■ 63.5235, 73.5580,
105.4578

Harmonies

Analogous

The Analogous color harmony consists of three colors that are next to each other on the color wheel.



32.7292, 31.3376, 28.3006



31.1967, 31.3376, 25.5236



29.3426, 31.3376, 24.9310

Triad

The Triadic color harmony groups three colors that are evenly spaced from another and form a triangle on the color wheel.



31.1967, 31.3376, 25.5236



26.3747, 31.3376, 35.4118



31.9985, 31.3376, 42.9576

Complementary

The Complementary color scheme is a pair of colors which are on the opposite of each other on the color wheel.



31.1967, 31.3376, 25.5236



27.6895, 30.1036, 42.3814

Split Complementary

Split-complementary colors differ from the complementary color scheme. The scheme consists of three colors, the original color and two neighbors of the complement color.



30.2327, 31.3376, 45.3311



31.1967, 31.3376, 25.5236



27.0237, 31.3376, 40.6899

Square

The Square scheme is like the rectangle color scheme, but the four colors are evenly spaced on the color wheel.



31.1967, 31.3376, 25.5236



26.6088, 31.3376, 30.2945



28.4174, 31.3376, 44.4608



33.2054, 31.3376, 38.2575

Rectangle

The Rectangle color scheme consists of four colors that form a rectangle on the color wheel.



31.1967, 31.3376, 25.5236



28.1828, 31.3376, 25.7917



28.4174, 31.3376, 44.4608



31.4478, 31.3376, 44.0751

Sweetspot

The Sweet Spot groups the original color and five complimentary colors.



31.1975, 31.3390, 25.5243



65.1302, 67.7225, 68.2359



30.2279, 26.7786, 33.2816



14.4523, 15.0122, 15.0269



82.5889, 86.8899, 94.6231



15.4596, 16.2647, 17.7123

Same Dimension

The Same Dimension uses a secret algorithm to generate beautiful new colors.



31.1975, 31.3390, 25.5243



54.3173, 53.8692, 40.6699



34.6096, 38.1631, 26.6616



7.7987, 8.0775, 7.9374



14.1763, 10.2499, 1.2312



0.3964, 0.3523, 0.0471

Inverse Universe

The Inverse Universe completely reimagines the original color for something new.



27.6895, 30.1036, 42.3814



46.8759, 51.2469, 76.4229



24.7132, 24.1510, 41.3893



7.4609, 7.9587, 9.5613



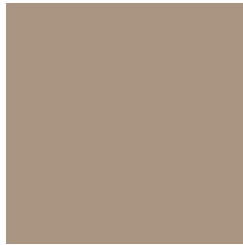
8.3044, 8.0691, 29.0953



0.2520, 0.2963, 0.7246

Previews

White Background



This preview shows how the XYZ color 31.1967, 31.3376, 25.5236 looks on a white background.

Color Contrast Check

Large Text (above 18pt) WCAG AA × Fail

Any Text WCAG AA × Fail

Large Text (above 18pt) WCAG AAA × Fail

Any Text WCAG AAA × Fail

Black Background



This preview shows how the XYZ color 31.1967, 31.3376, 25.5236 looks on a black background.

Color Contrast Check

Large Text (above 18pt) WCAG AA ✓ Pass

Any Text WCAG AA ✓ Pass

Large Text (above 18pt) WCAG AAA ✓ Pass

Any Text WCAG AAA ✓ Pass

If you want to check with other color combinations, try the [Color Contrast Checker](#).

XYZ 31.1967, 31.3376, 25.5236

Background



This preview shows how black text looks on a background with the XYZ color 31.1967, 31.3376, 25.5236.



This preview shows how white text looks on a background with the XYZ color 31.1967, 31.3376,

Color Blindness Simulation

Color vision deficiency is a very complex topic, and I could not describe the different causes any better than Wikipedia does, so if you want to learn more, you should check out their [article about color blindness](#).

Dichromacy



Original Color

31.1967, 31.3376, 25.5236

Protanopia

29.6912, 31.4933, 26.3437

Deuteranopia

31.7637, 31.1681, 25.4610



Tritanopia

33.2076, 31.2311, 35.7305

Trichromacy



Original Color

31.1967, 31.3376, 25.5236

Protanomaly

30.2676, 31.5584, 25.9688

Deuteranomaly

31.6966, 31.3634, 25.5022

Tritanomaly

32.4051, 31.1280, 31.9041

Monochromacy



Original Color

31.1967, 31.3376, 25.5236

Achromatopsia

30.2779, 31.8547, 34.6897

Achromatomaly

30.4755, 31.5485, 31.2713

CSS Examples

Text

The CSS property to change the color of the text to XYZ 31.1967, 31.3376, 25.5236 is called "color". The color property can be set on classes, ids or directly on the HTML element.

This example shows how text in the color `rgb(170, 148, 130)` looks like.

```
.text, #text, p{  
    color:rgb(170, 148, 130)  
}
```

If you want to add a text shadow in that color use the text-shadow property, you can generate a text shadow directly with our [CSS Text Shadow Generator](#).

Here you see how black text with a 4 pixel rgb(170, 148, 130) colored shadow looks like.

```
.shadow{ text-shadow: 4px 4px 2px rgb(170, 148, 130) }
```

Border

The CSS property to change the border of an element to XYZ 31.1967, 31.3376, 25.5236 is called "border". The border property can be set on classes, ids or directly on the HTML element.

This example shows the color as border, it can be applied via the CSS property "border" or "border-color".

```
.border, #border, table{ border:4px solid rgb(170, 148, 130) }
```


If only the border color should be changed use the property border-color.

```
.border{ border-color:rgb(170, 148, 130) }
```

If you want to add a box shadow in that color use:

Here you see how a box with a 4 pixel rgb(170, 148, 130) colored shadow looks like.

```
.boxshadow{ -moz-box-shadow:4px 4px 4px  
4px rgb(170, 148, 130); -webkit-box-  
shadow:4px 4px 4px 4px rgb(170, 148, 130);  
box-shadow:4px 4px 4px 4px rgb(170, 148,  
130) }
```

Background

The CSS property to change the background color of an element to XYZ 31.1967, 31.3376, 25.5236 is called "background". The background property can be set on classes, ids or directly on the HTML element.

```
.background, #background, body{  
background: rgb(170, 148, 130) }
```

If only the background color should be changed can be used:

```
.background{ background-color: rgb(170,  
148, 130) }
```

This example shows the color as background, it is applied via the CSS property "background".

To optimize and compress your CSS code, you can use our [online CSS compressor and optimizer](#) based on csstidy. If you want to create a linear or radial gradient as background or border, check our [CSS Gradient Generator](#).

Hey! You found this booklet interesting? Support Converting Colors with the new Membership Option!

The pro membership hides all ads, plus gives you double the colors in the color bucket, and more awesome pro features!

[Learn more, Memberships starting at \\$2.50/m!](#)

**Follow me
on Twitter!**

@ConvertingColor