

Converting Colors

XYZ(31.2700, 28.4361, 10.7708)

Have a look what the booklet for
XYZ(31.2700, 28.4361, 10.7708)
contains.

XYZ(31.2129, 28.3872, 10.8554)	3
<i>Conversions</i>	4
<i>Details</i>	6
<i>Harmonies</i>	12
<i>Previews</i>	24
<i>Color Blindness Simulation</i>	28
<i>CSS Examples</i>	31

Color

**XYZ(31.2129, 28.3872,
10.8554)**

Conversions

Conversions Part 1

Format	Color
Hex	BF854D
RGB	191, 133, 77
RGB Percent	75%, 52%, 30%
CMY	0.2510, 0.4784, 0.6980
CMYK	0.00, 0.30, 0.60, 0.25
HSL	29°, 47%, 53%
HSV	29°, 60%, 75%
XYZ	31.2129, 28.3872, 10.8554
YIQ	143.9580, 52.5440, -5.1200

Conversions

Conversions Part 2

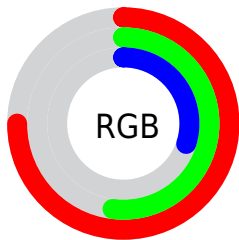
Format	Color
RYB	191, 187, 77
Decimal	12551501
CIELab	60.24, 16.35, 38.70
CIELCh	60, 42.017, 67.097
Yxy	28.3872, 0.4430, 0.4029
Android (android.graphics.Color)	4290741581 (0xFFBF854D)
YUV	143.9580, -33.0103, 41.2558
Hunter-Lab	53.2796, 11.3316, 25.2158

Details

The XYZ color **31.2129, 28.3872, 10.8554** is a dark color, and the websafe version is hex **CC9966**. A complement of this color would be **21.1281, 22.6663, 52.5514**, and the grayscale version is **26.6069, 27.9925, 30.4838**.

A 20% lighter version of the original color is **60.8140, 56.9741, 27.8705**, and **13.1465, 11.3436, 2.6590** is the 20% darker color. If you saturate the color by 10%, you get **29.3657, 25.6184, 7.3870**, and if you desaturate by 10%, it is **33.3825, 31.4842, 15.4085**.

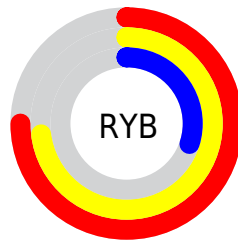
Distribution



Red (75%)

Green (52%)

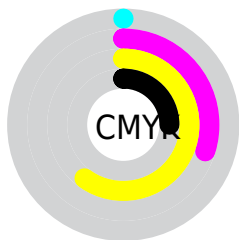
Blue (30%)



Red (75%)

Yellow (73%)

Blue (30%)

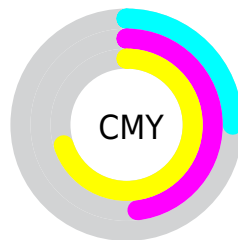


Cyan (0%)

Magenta (30%)

Yellow (60%)

Black (25%)



Cyan (25%)

Magenta (48%)

Yellow (70%)

Brightness & Saturation Gradients

These gradients show how the XYZ color 31.2129, 28.3872, 10.8554 changes by changing the brightness by 10 percent. The first figure shows a shift by +10% for each color and the second figure -10%.

Similar to the brightness gradients but the following saturation gradients show a change of the XYZ color 31.2129, 28.3872, 10.8554 by changing the saturation by 10% instead.

31.2129, 28.3872,
10.8554

31.2129, 28.3872,
10.8554

299.3273,
294.3125, 207.3745

20.9136, 18.6177,
5.8567

60.9487, 57.1020,
28.0250

13.1730, 11.3944,
2.6908

81.1159, 76.8162,
41.0331

7.6256, 6.3328,
0.9388

105.3031,
100.6141, 57.5480

3.9061, 3.0485,
0.0000

133.8758,
128.8800, 77.9883

1.6492, 1.1571,
0.0000

167.1992,
161.9984, 102.7726

0.4241, 0.0262,
0.0000

205.6387,

0.0000, 0.0000,

200.3537, 132.3193

0.0000

249.5596,
244.3303, 167.0471

■ 31.2129, 28.3872,
10.8554

■ 31.2129, 28.3872,
10.8554

■ 29.3657, 25.6184,
7.3870

■ 33.3825, 31.4842,
15.4085

■ 27.8178, 23.1597,
4.9064

■ 35.8914, 34.9179,
21.1287

■ 26.5451, 20.9972,
3.3018

■ 38.7576, 38.7014,
28.0921

■ 25.5040, 19.1076,
2.3612

■ 41.9969, 42.8459,
36.3678

■ 25.4735, 19.0518,
2.3348

■ 45.6243, 47.3620,
46.0199

■ 49.6536, 52.2595,
57.1081

■ 54.0981, 57.5483,
69.6887

■ 58.9703, 63.2374,
83.8148

■ 64.2823, 69.3358,
99.5370

Harmonies

Analogous

The Analogous color harmony consists of three colors that are next to each other on the color wheel.



36.1070, 28.3872, 16.2560



31.2129, 28.3872, 10.8554



25.7226, 28.3872, 9.8387

Triad

The Triadic color harmony groups three colors that are evenly spaced from another and form a triangle on the color wheel.



31.2129, 28.3872, 10.8554



17.9587, 28.3872, 34.7173



33.7176, 28.3872, 61.0917

Complementary

The Complementary color scheme is a pair of colors which are on the opposite of each other on the color wheel.



31.2129, 28.3872, 10.8554



21.1281, 22.6663, 52.5514

Split Complementary

Split-complementary colors differ from the complementary color scheme. The scheme consists of three colors, the original color and two neighbors of the complement color.



28.2801, 28.3872, 70.6401



31.2129, 28.3872, 10.8554



19.5392, 28.3872, 52.4558

Square

The Square scheme is like the rectangle color scheme, but the four colors are evenly spaced on the color wheel.



31.2129, 28.3872, 10.8554



18.5262, 28.3872, 20.7487



23.1503, 28.3872, 67.0424



37.6821, 28.3872, 43.9392

Rectangle

The Rectangle color scheme consists of four colors that form a rectangle on the color wheel.



31.2129, 28.3872, 10.8554



22.5362, 28.3872, 11.3181



23.1503, 28.3872, 67.0424



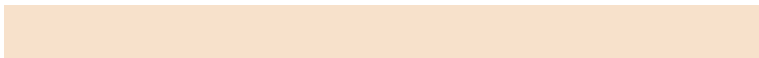
31.9753, 28.3872, 65.5183

Sweetspot

The Sweet Spot groups the original color and five complimentary colors.



31.2136, 28.3886, 10.8559



76.0843, 77.8296, 67.4044



28.5766, 18.1591, 25.2544



16.3101, 16.5892, 13.7647



92.9021, 97.7402, 106.4391



19.4759, 20.4902, 22.3138

Same Dimension

The Same Dimension uses a secret algorithm to generate beautiful new colors.



31.2136, 28.3886, 10.8559



51.5780, 44.2997, 11.5046



41.0443, 48.0502, 14.1329



9.9067, 10.2894, 10.0406



16.8212, 12.6812, 1.5611



0.7244, 0.6277, 0.0830

Inverse Universe

The Inverse Universe completely reimagines the original color for something new.



21.1281, 22.6663, 52.5514



31.8616, 33.1045, 92.9897



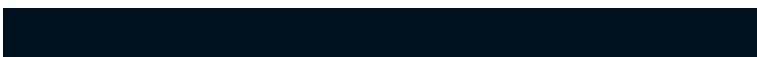
15.2535, 10.9172, 50.5932



9.4069, 10.0061, 12.1078



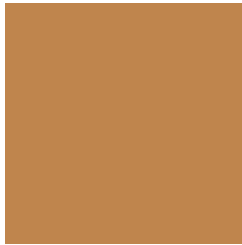
9.0805, 8.2727, 33.5111



0.4210, 0.4547, 1.3344

Previews

White Background



This preview shows how the XYZ color 31.2129, 28.3872, 10.8554 looks on a white background.

Color Contrast Check

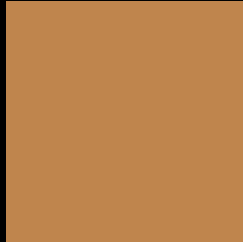
Large Text (above 18pt) WCAG AA ✓ Pass

Any Text WCAG AA × Fail

Large Text (above 18pt) WCAG AAA × Fail

Any Text WCAG AAA × Fail

Black Background



This preview shows how the XYZ color 31.2129, 28.3872, 10.8554 looks on a black background.

Color Contrast Check

Large Text (above 18pt) WCAG AA ✓ Pass

Any Text WCAG AA ✓ Pass

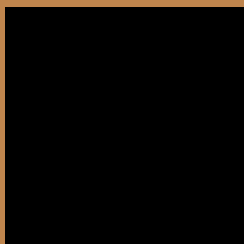
Large Text (above 18pt) WCAG AAA ✓ Pass

Any Text WCAG AAA × Fail

If you want to check with other color combinations, try the [Color Contrast Checker](#).

XYZ 31.2129, 28.3872, 10.8554

Background



This preview shows how black text looks on a background with the XYZ color 31.2129, 28.3872, 10.8554.



This preview shows how white text looks on a background with the XYZ color 31.2129, 28.3872,

Color Blindness Simulation

Color vision deficiency is a very complex topic, and I could not describe the different causes any better than Wikipedia does, so if you want to learn more, you should check out their [article about color blindness](#).

Dichromacy



Original Color

31.2129, 28.3872, 10.8554

Protanopia

26.2613, 28.6254, 11.9257

Deuteranopia

29.1275, 28.5707, 10.8170



Tritanopia

34.4105, 28.3014, 26.9416

Trichromacy



Original Color

31.2129, 28.3872, 10.8554

Protanomaly

27.7674, 28.2869, 11.5858

Deuteranomaly

29.7786, 28.4804, 10.7652

Tritanomaly

33.1929, 28.4077, 19.9534

Monochromacy



Original Color

31.2129, 28.3872, 10.8554

Achromatopsia

26.5089, 27.8894, 30.3716

Achromatomaly

27.4662, 27.6893, 21.6662

CSS Examples

Text

The CSS property to change the color of the text to XYZ 31.2129, 28.3872, 10.8554 is called "color". The color property can be set on classes, ids or directly on the HTML element.

This example shows how text in the color `rgb(191, 133, 77)` looks like.

```
.text, #text, p{  
    color:rgb(191, 133, 77)  
}
```

If you want to add a text shadow in that color use the text-shadow property, you can generate a text shadow directly with our [CSS Text Shadow Generator](#).

Here you see how black text with a 4 pixel rgb(191, 133, 77) colored shadow looks like.

```
.shadow{ text-shadow: 4px 4px 2px rgb(191, 133, 77) }
```

Border

The CSS property to change the border of an element to XYZ 31.2129, 28.3872, 10.8554 is called "border". The border property can be set on classes, ids or directly on the HTML element.

This example shows the color as border, it can be applied via the CSS property "border" or "border-color".

```
.border, #border, table{ border:4px solid rgb(191, 133, 77) }
```


If only the border color should be changed use the property `border-color`.

```
.border{ border-color:rgb(191, 133, 77) }
```

If you want to add a box shadow in that color use:

Here you see how a box with a 4 pixel `rgb(191, 133, 77)` colored shadow looks like.

```
.boxshadow{ -moz-box-shadow:4px 4px 4px  
4px rgb(191, 133, 77); -webkit-box-  
shadow:4px 4px 4px 4px rgb(191, 133, 77);  
box-shadow:4px 4px 4px 4px rgb(191, 133,  
77) }
```

Background

The CSS property to change the background color of an element to XYZ 31.2129, 28.3872, 10.8554 is called "background". The background property can be set on classes, ids or directly on the HTML element.

```
.background, #background, body{  
background: rgb(191, 133, 77) }
```

If only the background color should be changed can be used:

```
.background{ background-color: rgb(191,  
133, 77) }
```

This example shows the color as background, it is applied via the CSS property "background".

To optimize and compress your CSS code, you can use our [online CSS compressor and optimizer](#) based on csstidy. If you want to create a linear or radial gradient as background or border, check our [CSS Gradient Generator](#).

Hey! You found this booklet interesting? Support Converting Colors with the new Membership Option!

The pro membership hides all ads, plus gives you double the colors in the color bucket, and more awesome pro features!

[Learn more, Memberships starting at \\$2.50/m!](#)

**Follow me
on Twitter!**

@ConvertingColor