

Converting Colors

XYZ(31.2883, 28.0808, 22.7930)

Have a look what the booklet for
XYZ(31.2883, 28.0808, 22.7930)
contains.

XYZ(31.3170, 28.1754, 22.8566)	3
<i>Conversions</i>	4
<i>Details</i>	6
<i>Harmonies</i>	12
<i>Previews</i>	24
<i>Color Blindness Simulation</i>	28
<i>CSS Examples</i>	31

Color

**XYZ(31.3170, 28.1754,
22.8566)**

Conversions

Conversions Part 1

Format	Color
Hex	B6857C
RGB	182, 133, 124
RGB Percent	71%, 52%, 49%
CMY	0.2863, 0.4784, 0.5137
CMYK	0.00, 0.27, 0.32, 0.29
HSL	9°, 28%, 60%
HSV	9°, 32%, 71%
XYZ	31.3170, 28.1754, 22.8566
YIQ	146.6250, 32.0930, 7.5890

Conversions

Conversions Part 2

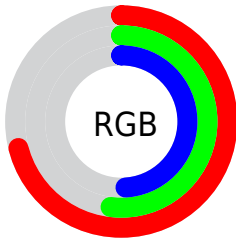
Format	Color
R_{YB}	182, 135, 124
Decimal	11961724
CIE _{Lab}	60.05, 17.55, 12.25
CIE _{LCh}	60, 21.408, 34.913
Yxy	28.1754, 0.3803, 0.3421
Android (android.graphics.Color)	4290151804 (0xFFB6857C)
YUV	146.6250, -11.1541, 31.0239
Hunter-Lab	53.0805, 12.4224, 11.6259

Details

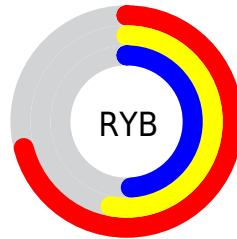
The XYZ color **31.3170, 28.1754, 22.8566** is a dark color, and the websafe version is hex **CC9999**. A complement of this color would be **31.6987, 37.5482, 49.8328**, and the grayscale version is **27.6143, 29.0524, 31.6381**.

A 20% lighter version of the original color is **61.0913, 56.6429, 49.3083**, and **13.2653, 11.2837, 8.1354** is the 20% darker color. If you saturate the color by 10%, you get **28.3175, 23.8515, 16.6928**, and if you desaturate by 10%, it is **34.8385, 33.2032, 30.2431**.

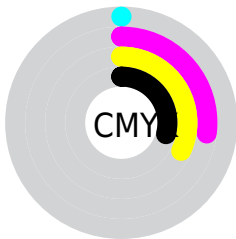
Distribution



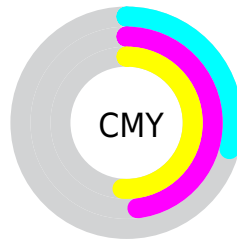
- Red (71%)
- Green (52%)
- Blue (49%)



- Red (71%)
- Yellow (53%)
- Blue (49%)



- Cyan (0%)
- Magenta (27%)
- Yellow (32%)
- Black (29%)



- Cyan (29%)
- Magenta (48%)
- Yellow (51%)

Brightness & Saturation Gradients

These gradients show how the XYZ color 31.3170, 28.1754, 22.8566 changes by changing the brightness by 10 percent. The first figure shows a shift by +10% for each color and the second figure -10%.

Similar to the brightness gradients but the following saturation gradients show a change of the XYZ color 31.3170, 28.1754, 22.8566 by changing the saturation by 10% instead.

31.3170, 28.1754,
22.8566

31.3170, 28.1754,
22.8566

299.7970,
293.3041, 280.0856

20.9934, 18.4579,
14.2834

61.1113, 56.7644,
49.0780

13.2316, 11.2792,
8.1770

81.3126, 76.4046,
67.5632

7.6663, 6.2550,
4.1190

105.5372,
100.1213, 90.1894

3.9322, 3.0007,
1.6909

134.1505,
128.2987, 117.3753

1.6638, 1.1321,
0.3545

167.5177,
161.3213, 149.5393

0.4335, 0.0052,
0.0000

206.0043,

0.0000, 0.0000,

199.5735, 187.1000

0.0000

249.9756,
243.4396, 230.4759

■ 31.3170, 28.1754,
22.8566

■ 31.3170, 28.1754,
22.8566

■ 28.3175, 23.8515,
16.6928

■ 34.8385, 33.2032,
30.2431

■ 25.8129, 20.1961,
11.6839

■ 38.9032, 38.9602,
38.9116

■ 23.7766, 17.1769,
7.7580

■ 43.5337, 45.4754,
48.9198

■ 22.1790, 14.7570,
4.8347

■ 48.7506, 52.7752,
60.3211

■ 20.9865, 12.8960,
2.8220

■ 54.5737, 60.8844,
73.1662

■ 20.1608, 11.5481,
1.6110

■ 61.0216, 69.8268,
87.5032

■ 19.7127, 10.7877,
1.0433

■ 68.1123, 79.6255,
103.3779

■ 73.1014, 88.6851,
107.8728

Harmonies

Analogous

The Analogous color harmony consists of three colors that are next to each other on the color wheel.



32.3550, 28.1754, 29.4092



31.3170, 28.1754, 22.8566



29.0667, 28.1754, 18.9822

Triad

The Triadic color harmony groups three colors that are evenly spaced from another and form a triangle on the color wheel.



31.3170, 28.1754, 22.8566



22.3035, 28.1754, 24.7378



27.2317, 28.1754, 48.2173

Complementary

The Complementary color scheme is a pair of colors which are on the opposite of each other on the color wheel.



31.3170, 28.1754, 22.8566



31.6987, 37.5482, 49.8328

Split Complementary

Split-complementary colors differ from the complementary color scheme. The scheme consists of three colors, the original color and two neighbors of the complement color.



24.6162, 28.1754, 46.3990



31.3170, 28.1754, 22.8566



21.8850, 28.1754, 31.9832

Square

The Square scheme is like the rectangle color scheme, but the four colors are evenly spaced on the color wheel.



31.3170, 28.1754, 22.8566



23.8878, 28.1754, 19.9321



22.7036, 28.1754, 40.1072



29.8965, 28.1754, 44.7239

Rectangle

The Rectangle color scheme consists of four colors that form a rectangle on the color wheel.



31.3170, 28.1754, 22.8566



27.2478, 28.1754, 18.0129



22.7036, 28.1754, 40.1072



26.3173, 28.1754, 48.2119

Sweetspot

The Sweet Spot groups the original color and five complimentary colors.



31.3177, 28.1767, 22.8572



71.8836, 72.5424, 73.4541



34.0711, 27.3894, 43.1785



15.6299, 15.6740, 15.6927



88.6918, 93.3107, 101.6153



17.8044, 18.7317, 20.3988

Same Dimension

The Same Dimension uses a secret algorithm to generate beautiful new colors.



31.3177, 28.1767, 22.8572



52.9931, 45.6357, 33.6329



35.7972, 37.1355, 24.3503



9.1142, 9.2314, 9.4084



13.9531, 7.6825, 0.7475



0.5275, 0.3421, 0.0382

Inverse Universe

The Inverse Universe completely reimagines the original color for something new.



31.6987, 37.5482, 49.8328



53.7770, 65.1903, 89.9843



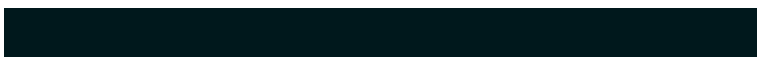
26.7747, 27.7003, 48.1914



9.1447, 9.9667, 11.5212



14.1331, 18.7260, 34.1226



0.5306, 0.7249, 1.2137

Previews

White Background



This preview shows how the XYZ color 31.3170, 28.1754, 22.8566 looks on a white background.

Color Contrast Check

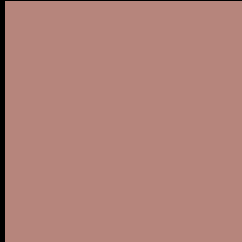
Large Text (above 18pt) WCAG AA ✓ Pass

Any Text WCAG AA × Fail

Large Text (above 18pt) WCAG AAA × Fail

Any Text WCAG AAA × Fail

Black Background



This preview shows how the XYZ color 31.3170, 28.1754, 22.8566 looks on a black background.

Color Contrast Check

Large Text (above 18pt) WCAG AA ✓ Pass

Any Text WCAG AA ✓ Pass

Large Text (above 18pt) WCAG AAA ✓ Pass

Any Text WCAG AAA × Fail

If you want to check with other color combinations, try the [Color Contrast Checker](#).

XYZ 31.3170, 28.1754, 22.8566

Background



This preview shows how black text looks on a background with the XYZ color 31.3170, 28.1754, 22.8566.



This preview shows how white text looks on a background with the XYZ color 31.3170, 28.1754,

Color Blindness Simulation

Color vision deficiency is a very complex topic, and I could not describe the different causes any better than Wikipedia does, so if you want to learn more, you should check out their [article about color blindness](#).

Dichromacy



Original Color

31.3170, 28.1754, 22.8566

Protanopia

26.9172, 28.4418, 25.1902

Deuteranopia

28.8896, 28.4017, 22.6983



Tritanopia

32.6912, 28.3460, 28.9476

Trichromacy



Original Color

31.3170, 28.1754, 22.8566

Protanomaly

28.3215, 28.2896, 24.3898

Deuteranomaly

29.5341, 28.0920, 22.6046

Tritanomaly

32.1529, 28.3191, 26.6932

Monochromacy



Original Color

31.3170, 28.1754, 22.8566

Achromatopsia

27.7328, 29.1771, 31.7738

Achromatomaly

28.8304, 28.6837, 28.4431

CSS Examples

Text

The CSS property to change the color of the text to XYZ 31.3170, 28.1754, 22.8566 is called "color". The color property can be set on classes, ids or directly on the HTML element.

This example shows how text in the color `rgb(182, 133, 124)` looks like.

```
.text, #text, p{  
    color:rgb(182, 133, 124)  
}
```

If you want to add a text shadow in that color use the text-shadow property, you can generate a text shadow directly with our [CSS Text Shadow Generator](#).

Here you see how black text with a 4 pixel rgb(182, 133, 124) colored shadow looks like.

```
.shadow{ text-shadow: 4px 4px 2px rgb(182, 133, 124) }
```

Border

The CSS property to change the border of an element to XYZ 31.3170, 28.1754, 22.8566 is called "border". The border property can be set on classes, ids or directly on the HTML element.

This example shows the color as border, it can be applied via the CSS property "border" or "border-color".

```
.border, #border, table{ border:4px solid rgb(182, 133, 124) }
```


If only the border color should be changed use the property `border-color`.

```
.border{ border-color:rgb(182, 133, 124) }
```

If you want to add a box shadow in that color use:

Here you see how a box with a 4 pixel `rgb(182, 133, 124)` colored shadow looks like.

```
.boxshadow{ -moz-box-shadow:4px 4px 4px  
4px rgb(182, 133, 124); -webkit-box-  
shadow:4px 4px 4px 4px rgb(182, 133, 124);  
box-shadow:4px 4px 4px 4px rgb(182, 133,  
124) }
```

Background

The CSS property to change the background color of an element to XYZ 31.3170, 28.1754, 22.8566 is called "background". The background property can be set on classes, ids or directly on the HTML element.

```
.background, #background, body{  
background: rgb(182, 133, 124) }
```

If only the background color should be changed can be used:

```
.background{ background-color: rgb(182,  
133, 124) }
```

This example shows the color as background, it is applied via the CSS property "background".

To optimize and compress your CSS code, you can use our [online CSS compressor and optimizer](#) based on csstidy. If you want to create a linear or radial gradient as background or border, check our [CSS Gradient Generator](#).

Hey! You found this booklet interesting? Support Converting Colors with the new Membership Option!

The pro membership hides all ads, plus gives you double the colors in the color bucket, and more awesome pro features!

[Learn more, Memberships starting at \\$2.50/m!](#)

**Follow me
on Twitter!**

@ConvertingColor