

Converting Colors

XYZ(31.3304, 31.0046, 21.6628)

Have a look what the booklet for
XYZ(31.3304, 31.0046, 21.6628)
contains.

XYZ(31.2879, 31.0036, 21.7880)	3
<i>Conversions</i>	4
<i>Details</i>	6
<i>Harmonies</i>	12
<i>Previews</i>	24
<i>Color Blindness Simulation</i>	28
<i>CSS Examples</i>	31

Color

**XYZ(31.2879, 31.0036,
21.7880)**

Conversions

Conversions Part 1

Format	Color
Hex	AF9277
RGB	175, 146, 119
RGB Percent	69%, 57%, 47%
CMY	0.3137, 0.4274, 0.5333
CMYK	0.00, 0.17, 0.32, 0.31
HSL	29°, 26%, 58%
HSV	29°, 32%, 69%
XYZ	31.2879, 31.0036, 21.7880
YIQ	151.5930, 25.9510, -2.2490

Conversions

Conversions Part 2

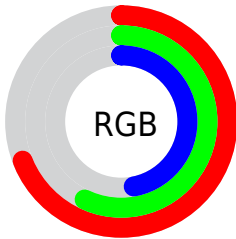
Format	Color
RYB	175, 171, 119
Decimal	11506295
CIELab	62.51, 6.83, 18.38
CIELCh	63, 19.609, 69.623
Yxy	31.0036, 0.3721, 0.3687
Android (android.graphics.Color)	4289696375 (0xFFAF9277)
YUV	151.5930, -16.0683, 20.5279
Hunter-Lab	55.6809, 2.8602, 15.7764

Details

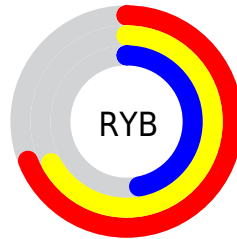
The XYZ color **31.2879, 31.0036, 21.7880** is a dark color, and the websafe version is hex **999966**. A complement of this color would be **25.9354, 28.1962, 44.6332**, and the grayscale version is **29.7295, 31.2777, 34.0614**.

A 20% lighter version of the original color is **60.9600, 61.2378, 47.1352**, and **13.1735, 12.8729, 7.5847** is the 20% darker color. If you saturate the color by 10%, you get **28.9904, 27.9385, 16.3058**, and if you desaturate by 10%, it is **33.8913, 34.3705, 28.3277**.

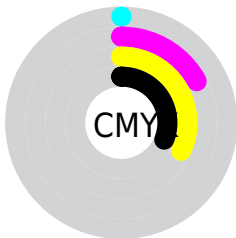
Distribution



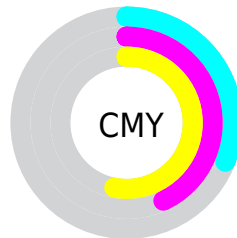
- Red (69%)
- Green (57%)
- Blue (47%)



- Red (69%)
- Yellow (67%)
- Blue (47%)



- Cyan (0%)
- Magenta (17%)
- Yellow (32%)
- Black (31%)



- Cyan (31%)
- Magenta (43%)
- Yellow (53%)

Brightness & Saturation Gradients

These gradients show how the XYZ color 31.2879, 31.0036, 21.7880 changes by changing the brightness by 10 percent. The first figure shows a shift by +10% for each color and the second figure -10%.

Similar to the brightness gradients but the following saturation gradients show a change of the XYZ color 31.2879, 31.0036, 21.7880 by changing the saturation by 10% instead.

■ 31.2879, 31.0036,
21.7880

■ 31.2879, 31.0036,
21.7880

299.6657,
306.5549, 274.3544

■ 20.9711, 20.6016,
13.5044

■ 61.0658, 61.2457,
47.2930

■ 13.2152, 12.8331,
7.6420

■ 81.2576, 81.8547,
65.3516

■ 7.6549, 7.3137,
3.7823

■ 105.4718,
106.6347, 87.5054

■ 3.9249, 3.6591,
1.5067

134.0737,
135.9702, 114.1732

■ 1.6597, 1.4847,
0.2229

167.4287,
170.2455, 145.7735

■ 0.4309, 0.2779,
0.0000

205.9021,

■ 0.0000, 0.0000,

209.8452, 182.7248

0.0000

249.8594,
255.1535, 225.4456

■ 31.2879, 31.0036,
21.7880

■ 31.2879, 31.0036,
21.7880

■ 28.9904, 27.9385,
16.3058

■ 33.8913, 34.3705,
28.3277

■ 26.9833, 25.1615,
11.8222

■ 36.8104, 38.0436,
35.9755

■ 25.2529, 22.6641,
8.2757

■ 40.0577, 42.0330,
44.7811

■ 23.7836, 20.4356,
5.5968

■ 43.6440, 46.3467,
54.7905

■ 22.5576, 18.4642,
3.7062

■ 47.5798, 50.9924,
66.0473

■ 21.5542, 16.7370,
2.5100

■ 51.8749, 55.9775,
78.5928

■ 20.8797, 15.5147,
1.8942

■ 56.5388, 61.3094,
92.4665

■ 60.9296, 66.7345,
104.2775

■ 63.3512, 71.5777,
105.0847

Harmonies

Analogous

The Analogous color harmony consists of three colors that are next to each other on the color wheel.



33.5925, 31.0036, 25.2393



31.2879, 31.0036, 21.7880



28.6199, 31.0036, 21.2608

Triad

The Triadic color harmony groups three colors that are evenly spaced from another and form a triangle on the color wheel.



31.2879, 31.0036, 21.7880



24.7005, 31.0036, 36.2699



32.8571, 31.0036, 46.3658

Complementary

The Complementary color scheme is a pair of colors which are on the opposite of each other on the color wheel.



31.2879, 31.0036, 21.7880



25.9354, 28.1962, 44.6332

Split Complementary

Split-complementary colors differ from the complementary color scheme. The scheme consists of three colors, the original color and two neighbors of the complement color.



30.3326, 31.0036, 50.3862



31.2879, 31.0036, 21.7880



25.6957, 31.0036, 44.0047

Square

The Square scheme is like the rectangle color scheme, but the four colors are evenly spaced on the color wheel.



31.2879, 31.0036, 21.7880



24.9221, 31.0036, 28.9027



27.7201, 31.0036, 49.4625



34.5356, 31.0036, 39.1280

Rectangle

The Rectangle color scheme consists of four colors that form a rectangle on the color wheel.



31.2879, 31.0036, 21.7880



27.0078, 31.0036, 22.5430



27.7201, 31.0036, 49.4625



32.0733, 31.0036, 48.1843

Sweetspot

The Sweet Spot groups the original color and five complimentary colors.



31.2887, 31.0050, 21.7886



66.9435, 69.3967, 67.1538



29.6905, 24.4737, 31.5374



14.7079, 15.2122, 14.4678



84.5950, 89.0005, 96.9216



16.2198, 17.0645, 18.5832

Same Dimension

The Same Dimension uses a secret algorithm to generate beautiful new colors.



31.2887, 31.0050, 21.7886



53.2372, 51.8139, 32.2811



35.9784, 40.3845, 23.3519



8.3120, 8.6287, 8.4408



15.0136, 11.2326, 1.3768



0.4726, 0.4224, 0.0566

Inverse Universe

The Inverse Universe completely reimagines the original color for something new.



25.9354, 28.1962, 44.6332



42.2186, 46.0311, 79.2966



22.1672, 20.6599, 43.3771



7.9090, 8.4174, 10.1606



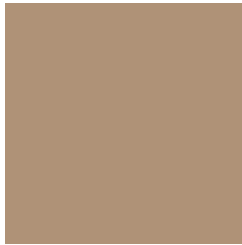
8.2588, 7.6515, 30.0861



0.2842, 0.3218, 0.8551

Previews

White Background



This preview shows how the XYZ color 31.2879, 31.0036, 21.7880 looks on a white background.

Color Contrast Check

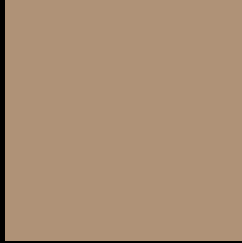
Large Text (above 18pt) WCAG AA × Fail

Any Text WCAG AA × Fail

Large Text (above 18pt) WCAG AAA × Fail

Any Text WCAG AAA × Fail

Black Background



This preview shows how the XYZ color 31.2879, 31.0036, 21.7880 looks on a black background.

Color Contrast Check

Large Text (above 18pt) WCAG AA ✓ Pass

Any Text WCAG AA ✓ Pass

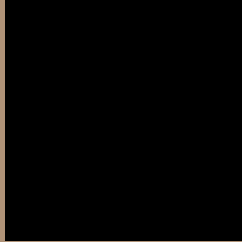
Large Text (above 18pt) WCAG AAA ✓ Pass

Any Text WCAG AAA ✓ Pass

If you want to check with other color combinations, try the [Color Contrast Checker](#).

XYZ 31.2879, 31.0036, 21.7880

Background



This preview shows how black text looks on a background with the XYZ color 31.2879, 31.0036, 21.7880.



This preview shows how white text looks on a background with the XYZ color 31.2879, 31.0036,

21.7880.

Color Blindness Simulation

Color vision deficiency is a very complex topic, and I could not describe the different causes any better than Wikipedia does, so if you want to learn more, you should check out their [article about color blindness](#).

Dichromacy



Original Color

31.2879, 31.0036, 21.7880

Protanopia

29.2157, 31.0908, 22.5504

Deuteranopia

31.5866, 30.9298, 21.7580



Tritanopia

33.7828, 30.9005, 33.8896

Trichromacy



Original Color

31.2879, 31.0036, 21.7880

Protanomaly

29.8635, 30.9579, 22.1708

Deuteranomaly

31.3597, 30.8128, 21.7474

Tritanomaly

32.9162, 31.0033, 29.0603

Monochromacy



Original Color

31.2879, 31.0036, 21.7880

Achromatopsia

29.8446, 31.3989, 34.1934

Achromatomaly

30.1372, 31.1797, 29.2408

CSS Examples

Text

The CSS property to change the color of the text to XYZ 31.2879, 31.0036, 21.7880 is called "color". The color property can be set on classes, ids or directly on the HTML element.

This example shows how text in the color `rgb(175, 146, 119)` looks like.

```
.text, #text, p{  
    color:rgb(175, 146, 119)  
}
```

If you want to add a text shadow in that color use the text-shadow property, you can generate a text shadow directly with our [CSS Text Shadow Generator](#).

Here you see how black text with a 4 pixel rgb(175, 146, 119) colored shadow looks like.

```
.shadow{ text-shadow: 4px 4px 2px rgb(175, 146, 119) }
```

Border

The CSS property to change the border of an element to XYZ 31.2879, 31.0036, 21.7880 is called "border". The border property can be set on classes, ids or directly on the HTML element.

This example shows the color as border, it can be applied via the CSS property "border" or "border-color".

```
.border, #border, table{ border:4px solid rgb(175, 146, 119) }
```


If only the border color should be changed use the property `border-color`.

```
.border{ border-color:rgb(175, 146, 119) }
```

If you want to add a box shadow in that color use:

Here you see how a box with a 4 pixel `rgb(175, 146, 119)` colored shadow looks like.

```
.boxshadow{ -moz-box-shadow:4px 4px 4px  
4px rgb(175, 146, 119); -webkit-box-  
shadow:4px 4px 4px 4px rgb(175, 146, 119);  
box-shadow:4px 4px 4px 4px rgb(175, 146,  
119) }
```

Background

The CSS property to change the background color of an element to XYZ 31.2879, 31.0036, 21.7880 is called "background". The background property can be set on classes, ids or directly on the HTML element.

```
.background, #background, body{  
background: rgb(175, 146, 119) }
```

If only the background color should be changed can be used:

```
.background{ background-color: rgb(175,  
146, 119) }
```

This example shows the color as background, it is applied via the CSS property "background".

To optimize and compress your CSS code, you can use our [online CSS compressor and optimizer](#) based on csstidy. If you want to create a linear or radial gradient as background or border, check our [CSS Gradient Generator](#).

Hey! You found this booklet interesting? Support Converting Colors with the new Membership Option!

The pro membership hides all ads, plus gives you double the colors in the color bucket, and more awesome pro features!

[Learn more, Memberships starting at \\$2.50/m!](#)

**Follow me
on Twitter!**

@ConvertingColor