

Converting Colors

XYZ(31.3486, 18.6230, 21.4851)

Have a look what the booklet for
XYZ(31.3486, 18.6230, 21.4851)
contains.

XYZ(31.3820, 18.6425, 21.3464)	3
<i>Conversions</i>	4
<i>Details</i>	6
<i>Harmonies</i>	12
<i>Previews</i>	24
<i>Color Blindness Simulation</i>	28
<i>CSS Examples</i>	31

Color

**XYZ(31.3820, 18.6425,
21.3464)**

Conversions

Conversions Part 1

Format	Color
Hex	CF427D
RGB	207, 66, 125
RGB Percent	81%, 26%, 49%
CMY	0.1882, 0.7411, 0.5098
CMYK	0.00, 0.68, 0.40, 0.19
HSL	335°, 59%, 54%
HSV	335°, 68%, 81%
XYZ	31.3820, 18.6425, 21.3464
YIQ	114.8850, 65.0970, 48.2410

Conversions

Conversions Part 2

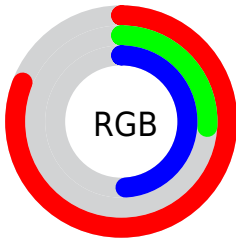
Format	Color
R_{YB}	207, 66, 125
Decimal	13582973
CIE Lab	50.27, 59.95, -1.93
CIE LCh	50, 59.982, 358.153
Yxy	18.6425, 0.4397, 0.2612
Android (android.graphics.Color)	4291773053 (0xFFCF427D)
YUV	114.8850, 4.9867, 80.7849
Hunter-Lab	43.1770, 54.1782, 0.9113

Details

The XYZ color **31.3820, 18.6425, 21.3464** is a dark color, and the websafe version is hex **CC3366**. The color can be described as dark muted rose. A complement of this color would be **29.9061, 47.9225, 35.6941**, and the grayscale version is **16.2335, 17.0789, 18.5989**.

A 20% lighter version of the original color is **56.2588, 38.6002, 46.0804**, and **13.5172, 6.8177, 7.4410** is the 20% darker color. If you saturate the color by 10%, you get **29.6608, 16.3572, 17.2054**, and if you desaturate by 10%, it is **33.6349, 21.8420, 26.1249**.

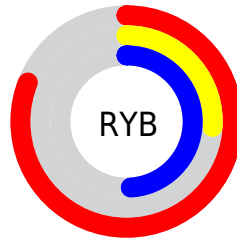
Distribution



Red (81%)

Green (26%)

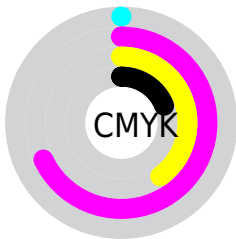
Blue (49%)



Red (81%)

Yellow (26%)

Blue (49%)

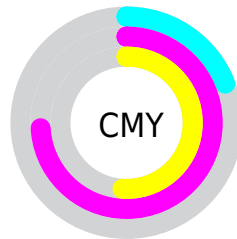


Cyan (0%)

Magenta (68%)

Yellow (40%)

Black (19%)



Cyan (19%)

Magenta (74%)

Yellow (51%)

Brightness & Saturation Gradients

These gradients show how the XYZ color 31.3820, 18.6425, 21.3464 changes by changing the brightness by 10 percent. The first figure shows a shift by +10% for each color and the second figure -10%.

Similar to the brightness gradients but the following saturation gradients show a change of the XYZ color 31.3820, 18.6425, 21.3464 by changing the saturation by 10% instead.

31.3820, 18.6425,
21.3464

31.3820, 18.6425,
21.3464

300.0899,
244.4680, 271.9550

21.0432, 11.4122,
13.1837

61.2128, 41.1291,
46.5516

13.2682, 6.3448,
7.4230

81.4354, 57.1543,
64.4312

7.6918, 3.0559,
3.6456

105.6833, 76.8799,
86.3868

3.9485, 1.1610,
1.4330

134.3219,
100.6903, 112.8371

1.6730, 0.0295,
0.1673

167.7165,
128.9699, 144.2005

0.4393, 0.0000,
0.0000

206.2324,

0.0000, 0.0000,

162.1031, 180.8956

0.0000

250.2351,
200.4744, 223.3409

■ 31.3820, 18.6425,
21.3464

■ 31.3820, 18.6425,
21.3464

■ 29.6608, 16.3572,
17.2054

■ 33.6349, 21.8420,
26.1249

■ 28.4166, 14.8821,
13.6669

■ 36.4636, 26.0386,
31.5707

■ 27.5728, 14.0695,
10.6880

■ 39.9088, 31.3094,
37.7124

■ 27.4365, 13.9471,
10.1796

■ 44.0073, 37.7230,
44.5763

■ 48.7925, 45.3420,
52.1873

■ 54.2957, 54.2247,
60.5689

■ 60.5461, 64.4255,
69.7433

■ 67.5714, 75.9956,
79.7321

■ 75.3977, 88.9835,
90.5557

Harmonies

Analogous

The Analogous color harmony consists of three colors that are next to each other on the color wheel.



28.9938, 18.6425, 42.2721



31.3820, 18.6425, 21.3464



29.4963, 18.6425, 8.6421

Triad

The Triadic color harmony groups three colors that are evenly spaced from another and form a triangle on the color wheel.



31.3820, 18.6425, 21.3464



12.9567, 18.6425, 3.1453



12.4575, 18.6425, 61.3675

Complementary

The Complementary color scheme is a pair of colors which are on the opposite of each other on the color wheel.



31.3820, 18.6425, 21.3464



29.9061, 47.9225, 35.6941

Split Complementary

Split-complementary colors differ from the complementary color scheme. The scheme consists of three colors, the original color and two neighbors of the complement color.



9.5867, 18.6425, 39.4280



31.3820, 18.6425, 21.3464



9.8276, 18.6425, 7.6710

Square

The Square scheme is like the rectangle color scheme, but the four colors are evenly spaced on the color wheel.



31.3820, 18.6425, 21.3464



18.0813, 18.6425, 2.1792



8.7399, 18.6425, 19.2855



17.3618, 18.6425, 71.9515

Rectangle

The Rectangle color scheme consists of four colors that form a rectangle on the color wheel.



31.3820, 18.6425, 21.3464



26.2586, 18.6425, 4.5828



8.7399, 18.6425, 19.2855



11.2665, 18.6425, 54.6421

Sweetspot

The Sweet Spot groups the original color and five complimentary colors.



31.3825, 18.6435, 21.3467



76.4697, 69.9005, 80.9385



25.0481, 14.5046, 60.5109



15.8909, 14.2008, 16.5708



0.0000, 0.0000, 0.0000



20.3446, 21.4041, 23.3091

Same Dimension

The Same Dimension uses a secret algorithm to generate beautiful new colors.



31.3825, 18.6435, 21.3467



46.4737, 24.9104, 24.6902



29.2596, 18.7465, 7.2319



12.0110, 11.8891, 13.3336



17.3311, 8.8053, 6.6499



1.0082, 0.5080, 0.5781

Inverse Universe

The Inverse Universe completely reimagines the original color for something new.



31.3825, 18.6435, 21.3467



46.4737, 24.9104, 24.6902



33.6127, 45.8693, 66.1135



12.0110, 11.8891, 13.3336



17.3311, 8.8053, 6.6499



1.0082, 0.5080, 0.5781

Previews

White Background



This preview shows how the XYZ color 31.3820, 18.6425, 21.3464 looks on a white background.

Color Contrast Check

Large Text (above 18pt) WCAG AA ✓ Pass

Any Text WCAG AA × Fail

Large Text (above 18pt) WCAG AAA × Fail

Any Text WCAG AAA × Fail

Black Background



This preview shows how the XYZ color 31.3820, 18.6425, 21.3464 looks on a black background.

Color Contrast Check

Large Text (above 18pt) WCAG AA ✓ Pass

Any Text WCAG AA ✓ Pass

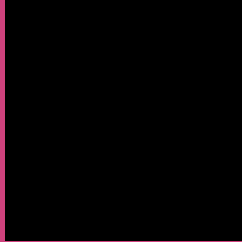
Large Text (above 18pt) WCAG AAA ✓ Pass

Any Text WCAG AAA × Fail

If you want to check with other color combinations, try the [Color Contrast Checker](#).

XYZ 31.3820, 18.6425, 21.3464

Background



This preview shows how black text looks on a background with the XYZ color 31.3820, 18.6425, 21.3464.



This preview shows how white text looks on a background with the XYZ color 31.3820, 18.6425,

Color Blindness Simulation

Color vision deficiency is a very complex topic, and I could not describe the different causes any better than Wikipedia does, so if you want to learn more, you should check out their [article about color blindness](#).

Dichromacy



Original Color

31.3820, 18.6425, 21.3464

Protanopia

19.1988, 18.9773, 34.9988

Deuteranopia

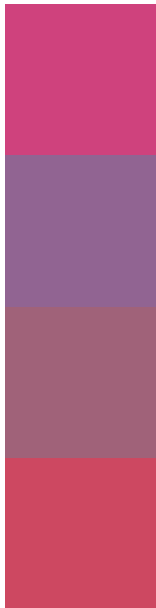
19.1883, 18.7853, 19.7541



Tritanopia

28.9715, 18.6003, 9.8478

Trichromacy



Original Color

31.3820, 18.6425, 21.3464

Protanomaly

21.4225, 17.2094, 29.3868

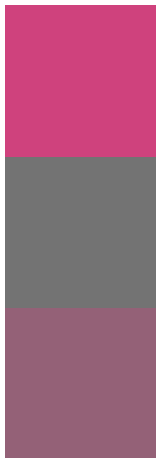
Deuteranomaly

22.3161, 17.5894, 20.3081

Tritanomaly

29.6519, 18.4769, 13.3128

Monochromacy



Original Color

31.3820, 18.6425, 21.3464

Achromatopsia

16.2955, 17.1441, 18.6699

Achromatomaly

19.8172, 16.1772, 19.5308

CSS Examples

Text

The CSS property to change the color of the text to XYZ 31.3820, 18.6425, 21.3464 is called "color". The color property can be set on classes, ids or directly on the HTML element.

This example shows how text in the color `rgb(207, 66, 125)` looks like.

```
.text, #text, p{  
    color:rgb(207, 66, 125)  
}
```

If you want to add a text shadow in that color use the text-shadow property, you can generate a text shadow directly with our [CSS Text Shadow Generator](#).

Here you see how black text with a 4 pixel rgb(207, 66, 125) colored shadow looks like.

```
.shadow{ text-shadow: 4px 4px 2px rgb(207, 66, 125) }
```

Border

The CSS property to change the border of an element to XYZ 31.3820, 18.6425, 21.3464 is called "border". The border property can be set on classes, ids or directly on the HTML element.

This example shows the color as border, it can be applied via the CSS property "border" or "border-color".

```
.border, #border, table{ border:4px solid rgb(207, 66, 125) }
```


If only the border color should be changed use the property `border-color`.

```
.border{ border-color:rgb(207, 66, 125) }
```

If you want to add a box shadow in that color use:

Here you see how a box with a 4 pixel `rgb(207, 66, 125)` colored shadow looks like.

```
.boxshadow{ -moz-box-shadow:4px 4px 4px 4px rgb(207, 66, 125); -webkit-box-shadow:4px 4px 4px 4px rgb(207, 66, 125); box-shadow:4px 4px 4px 4px rgb(207, 66, 125) }
```

Background

The CSS property to change the background color of an element to XYZ 31.3820, 18.6425, 21.3464 is called "background". The background property can be set on classes, ids or directly on the HTML element.

```
.background, #background, body{  
background: rgb(207, 66, 125) }
```

If only the background color should be changed can be used:

```
.background{ background-color: rgb(207, 66,  
125) }
```

This example shows the color as background, it is applied via the CSS property "background".

To optimize and compress your CSS code, you can use our [online CSS compressor and optimizer](#) based on csstidy. If you want to create a linear or radial gradient as background or border, check our [CSS Gradient Generator](#).

Hey! You found this booklet interesting? Support Converting Colors with the new Membership Option!

The pro membership hides all ads, plus gives you double the colors in the color bucket, and more awesome pro features!

[Learn more, Memberships starting at \\$2.50/m!](#)

**Follow me
on Twitter!**

@ConvertingColor