

Converting Colors

XYZ(31.5187, 28.0497, 25.6425)

Have a look what the booklet for
XYZ(31.5187, 28.0497, 25.6425)
contains.

XYZ(31.4722, 27.9922, 25.5741)	3
<i>Conversions</i>	4
<i>Details</i>	6
<i>Harmonies</i>	12
<i>Previews</i>	24
<i>Color Blindness Simulation</i>	28
<i>CSS Examples</i>	31

Color

**XYZ(31.4722, 27.9922,
25.5741)**

Conversions

Conversions Part 1

Format	Color
Hex	B58484
RGB	181, 132, 132
RGB Percent	71%, 52%, 52%
CMY	0.2902, 0.4823, 0.4823
CMYK	0.00, 0.27, 0.27, 0.29
HSL	0°, 25%, 61%
HSV	0°, 27%, 71%
XYZ	31.4722, 27.9922, 25.5741
YIQ	146.6510, 29.2040, 10.3880

Conversions

Conversions Part 2

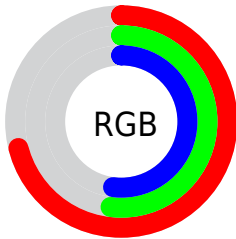
Format	Color
RYB	181, 132, 132
Decimal	11895940
CIELab	59.88, 18.84, 7.43
CIELCh	60, 20.249, 21.532
Yxy	27.9922, 0.3701, 0.3292
Android (android.graphics.Color)	4290086020 (0xFFB58484)
YUV	146.6510, -7.2229, 30.1241
Hunter-Lab	52.9077, 13.5926, 8.3762

Details

The XYZ color **31.4722, 27.9922, 25.5741** is a light color, and the websafe version is hex **CC9999**. A complement of this color would be **34.3797, 41.2884, 49.8738**, and the grayscale version is **27.6101, 29.0480, 31.6333**.

A 20% lighter version of the original color is **61.3658, 56.3778, 53.5466**, and **13.3310, 11.1711, 9.6372** is the 20% darker color. If you saturate the color by 10%, you get **28.0945, 23.0498, 18.8584**, and if you desaturate by 10%, it is **35.4922, 33.8747, 33.5647**.

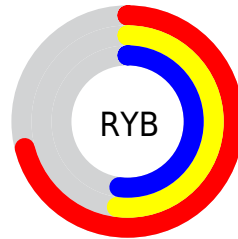
Distribution



Red (71%)

Green (52%)

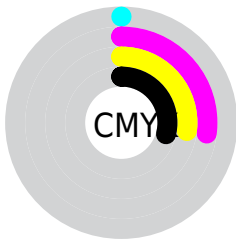
Blue (52%)



Red (71%)

Yellow (52%)

Blue (52%)

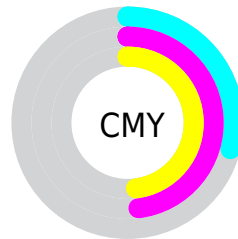


Cyan (0%)

Magenta (27%)

Yellow (27%)

Black (29%)



Cyan (29%)


Magenta (48%)


Yellow (48%)

Brightness & Saturation Gradients


These gradients show how the XYZ color 31.4722, 27.9922, 25.5741 changes by changing the brightness by 10 percent. The first figure shows a shift by +10% for each color and the second figure -10%.


Similar to the brightness gradients but the following saturation gradients show a change of the XYZ color 31.4722, 27.9922, 25.5741 by changing the saturation by 10% instead.


 31.4722, 27.9922,
25.5741


 31.4722, 27.9922,
25.5741


300.4961,
292.4296, 294.2237


 21.1123, 18.3198,
16.2824


 61.3535, 56.4720,
53.5627

 13.3190, 11.1798,
9.5677

 81.6057, 76.0481,
73.0966

 7.7271, 6.1879,
5.0114

 105.8859, 99.6943,
96.8818

 3.9712, 2.9597,
2.1951

134.5596,
127.7950, 125.3366

 1.6858, 1.1107,
0.6715

167.9921,
160.7344, 158.8796

 0.4474, 0.0000,
0.0000

206.5488,

 0.0000, 0.0000,

198.8971, 197.9295

0.0000

250.5950,
242.6674, 242.9047

■ 31.4722, 27.9922,
25.5741

■ 31.4722, 27.9922,
25.5741

■ 28.0945, 23.0498,
18.8584

■ 35.4922, 33.8747,
33.5647

■ 25.3236, 18.9952,
13.3501

■ 40.1828, 40.7384,
42.8896

■ 23.1243, 15.7770,
8.9781

■ 45.5735, 48.6265,
53.6063

■ 21.4567, 13.3368,
5.6632

■ 51.6914, 57.5787,
65.7688

■ 20.2759, 11.6088,
3.3160

■ 58.5622, 67.6324,
79.4278

■ 19.5295, 10.5166,
1.8324

■ 66.2101, 78.8233,
94.6320

■ 19.1429, 9.9508,
1.0640

■ 72.8662, 88.5638,
107.8618

■ 19.0563, 9.8241,
0.8919

Harmonies

Analogous

The Analogous color harmony consists of three colors that are next to each other on the color wheel.



31.7988, 27.9922, 32.6106



31.4722, 27.9922, 25.5741



29.7997, 27.9922, 20.6868

Triad

The Triadic color harmony groups three colors that are evenly spaced from another and form a triangle on the color wheel.



31.4722, 27.9922, 25.5741



22.9213, 27.9922, 22.4955



25.8847, 27.9922, 46.7288

Complementary

The Complementary color scheme is a pair of colors which are on the opposite of each other on the color wheel.



31.4722, 27.9922, 25.5741



34.3797, 41.2884, 49.8738

Split Complementary

Split-complementary colors differ from the complementary color scheme. The scheme consists of three colors, the original color and two neighbors of the complement color.



23.6486, 27.9922, 42.9562



31.4722, 27.9922, 25.5741



22.0113, 27.9922, 28.4419

Square

The Square scheme is like the rectangle color scheme, but the four colors are evenly spaced on the color wheel.



31.4722, 27.9922, 25.5741



24.8330, 27.9922, 19.1187



22.2687, 27.9922, 35.9735



28.4609, 27.9922, 45.6295

Rectangle

The Rectangle color scheme consists of four colors that form a rectangle on the color wheel.



31.4722, 27.9922, 25.5741



28.2020, 27.9922, 18.9296



22.2687, 27.9922, 35.9735



25.0709, 27.9922, 45.9691

Sweetspot

The Sweet Spot groups the original color and five complimentary colors.



31.4730, 27.9935, 25.5747



71.0151, 71.5697, 74.9234



35.6481, 29.6628, 47.5629



15.0656, 15.0542, 15.6304



86.6293, 91.1408, 99.2523



17.0014, 17.8868, 19.4787

Same Dimension

The Same Dimension uses a secret algorithm to generate beautiful new colors.



31.4730, 27.9935, 25.5747



52.9230, 45.0958, 38.9566



35.1938, 35.4351, 26.8149



8.4964, 8.5054, 8.8464



13.1370, 6.7725, 0.6148



0.4134, 0.2131, 0.0194

Inverse Universe

The Inverse Universe completely reimagines the original color for something new.



34.3797, 41.2884, 49.8738



58.9331, 72.5850, 89.1988



29.8291, 32.1872, 48.3569



8.7426, 9.6315, 10.9046



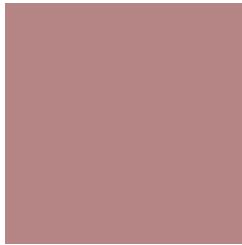
17.1393, 25.0790, 34.0744



0.5393, 0.7891, 1.0721

Previews

White Background



This preview shows how the XYZ color 31.4722, 27.9922, 25.5741 looks on a white background.

Color Contrast Check

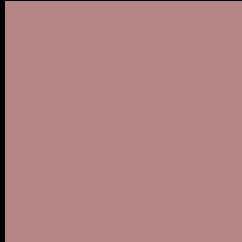
Large Text (above 18pt) WCAG AA ✓ Pass

Any Text WCAG AA × Fail

Large Text (above 18pt) WCAG AAA × Fail

Any Text WCAG AAA × Fail

Black Background



This preview shows how the XYZ color 31.4722, 27.9922, 25.5741 looks on a black background.

Color Contrast Check

Large Text (above 18pt) WCAG AA ✓ Pass

Any Text WCAG AA ✓ Pass

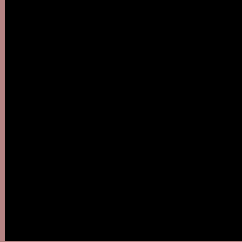
Large Text (above 18pt) WCAG AAA ✓ Pass

Any Text WCAG AAA × Fail

If you want to check with other color combinations, try the [Color Contrast Checker](#).

XYZ 31.4722, 27.9922, 25.5741

Background



This preview shows how black text looks on a background with the XYZ color 31.4722, 27.9922, 25.5741.



This preview shows how white text looks on a background with the XYZ color 31.4722, 27.9922,

25.5741.

Color Blindness Simulation

Color vision deficiency is a very complex topic, and I could not describe the different causes any better than Wikipedia does, so if you want to learn more, you should check out their [article about color blindness](#).

Dichromacy



Original Color

31.4722, 27.9922, 25.5741

Protanopia

26.9551, 28.1711, 28.0616

Deuteranopia

28.6392, 27.9964, 25.3671



Tritanopia

32.2154, 28.1008, 28.9254

Trichromacy



Original Color

31.4722, 27.9922, 25.5741

Protanomaly

28.5200, 28.1108, 27.2153

Deuteranomaly

29.4785, 27.7931, 25.2836

Tritanomaly

31.9951, 28.0127, 27.7654

Monochromacy



Original Color

31.4722, 27.9922, 25.5741

Achromatopsia

27.7328, 29.1771, 31.7738

Achromatomaly

28.8536, 28.6699, 29.6043

CSS Examples

Text

The CSS property to change the color of the text to XYZ 31.4722, 27.9922, 25.5741 is called "color". The color property can be set on classes, ids or directly on the HTML element.

This example shows how text in the color `rgb(181, 132, 132)` looks like.

```
.text, #text, p{  
    color:rgb(181, 132, 132)  
}
```

If you want to add a text shadow in that color use the text-shadow property, you can generate a text shadow directly with our [CSS Text Shadow Generator](#).

Here you see how black text with a 4 pixel rgb(181, 132, 132) colored shadow looks like.

```
.shadow{ text-shadow: 4px 4px 2px rgb(181, 132, 132) }
```

Border

The CSS property to change the border of an element to XYZ 31.4722, 27.9922, 25.5741 is called "border". The border property can be set on classes, ids or directly on the HTML element.

This example shows the color as border, it can be applied via the CSS property "border" or "border-color".

```
.border, #border, table{ border:4px solid rgb(181, 132, 132) }
```


If only the border color should be changed use the property `border-color`.

```
.border{ border-color:rgb(181, 132, 132) }
```

If you want to add a box shadow in that color use:

Here you see how a box with a 4 pixel `rgb(181, 132, 132)` colored shadow looks like.

```
.boxshadow{ -moz-box-shadow:4px 4px 4px  
4px rgb(181, 132, 132); -webkit-box-  
shadow:4px 4px 4px 4px rgb(181, 132, 132);  
box-shadow:4px 4px 4px 4px rgb(181, 132,  
132) }
```

Background

The CSS property to change the background color of an element to XYZ 31.4722, 27.9922, 25.5741 is called "background". The background property can be set on classes, ids or directly on the HTML element.

```
.background, #background, body{  
background: rgb(181, 132, 132) }
```

If only the background color should be changed can be used:

```
.background{ background-color: rgb(181,  
132, 132) }
```

This example shows the color as background, it is applied via the CSS property "background".

To optimize and compress your CSS code, you can use our [online CSS compressor and optimizer](#) based on csstidy. If you want to create a linear or radial gradient as background or border, check our [CSS Gradient Generator](#).

Hey! You found this booklet interesting? Support Converting Colors with the new Membership Option!

The pro membership hides all ads, plus gives you double the colors in the color bucket, and more awesome pro features!

[Learn more, Memberships starting at \\$2.50/m!](#)

**Follow me
on Twitter!**

@ConvertingColor