

Converting Colors

XYZ(31.5871, 31.0770, 18.0541)

Have a look what the booklet for
XYZ(31.5871, 31.0770, 18.0541)
contains.

XYZ(31.5493, 30.9947, 17.9554)	3
<i>Conversions</i>	4
<i>Details</i>	6
<i>Harmonies</i>	12
<i>Previews</i>	24
<i>Color Blindness Simulation</i>	28
<i>CSS Examples</i>	31

Color

**XYZ(31.5493, 30.9947,
17.9554)**

Conversions

Conversions Part 1

Format	Color
Hex	B4916A
RGB	180, 145, 106
RGB Percent	71%, 57%, 42%
CMY	0.2941, 0.4314, 0.5843
CMYK	0.00, 0.19, 0.41, 0.29
HSL	32°, 33%, 56%
HSV	32°, 41%, 71%
XYZ	31.5493, 30.9947, 17.9554
YIQ	151.0190, 33.3790, -4.7090

Conversions

Conversions Part 2

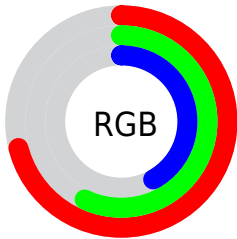
Format	Color
RYB	172, 180, 106
Decimal	11833706
CIELab	62.50, 7.82, 25.68
CIELCh	63, 26.839, 73.063
Yxy	30.9947, 0.3919, 0.3850
Android (android.graphics.Color)	4290023786 (0xFFB4916A)
YUV	151.0190, -22.1944, 25.4163
Hunter-Lab	55.6729, 3.7267, 19.8490

Details

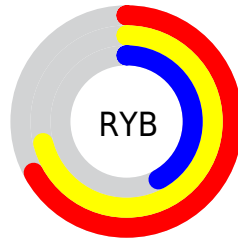
The XYZ color **31.5493, 30.9947, 17.9554** is a dark color, and the websafe version is hex **CC9966**. A complement of this color would be **23.7066, 25.4083, 46.8348**, and the grayscale version is **29.5062, 31.0428, 33.8056**.

A 20% lighter version of the original color is **61.5200, 61.3200, 40.9412**, and **13.4601, 12.9255, 5.7884** is the 20% darker color. If you saturate the color by 10%, you get **29.4575, 28.1552, 13.1147**, and if you desaturate by 10%, it is **33.9366, 34.1107, 23.8646**.

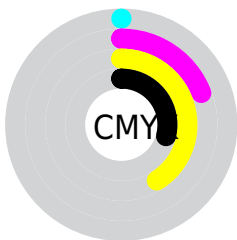
Distribution



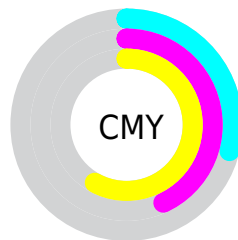
- Red (71%)
- Green (57%)
- Blue (42%)



- Red (67%)
- Yellow (71%)
- Blue (42%)



- Cyan (0%)
- Magenta (19%)
- Yellow (41%)
- Black (29%)



- Cyan (29%)
- Magenta (43%)
- Yellow (58%)

Brightness & Saturation Gradients

These gradients show how the XYZ color 31.5493, 30.9947, 17.9554 changes by changing the brightness by 10 percent. The first figure shows a shift by +10% for each color and the second figure -10%.

Similar to the brightness gradients but the following saturation gradients show a change of the XYZ color 31.5493, 30.9947, 17.9554 by changing the saturation by 10% instead.

■ 31.5493, 30.9947,
17.9554

■ 31.5493, 30.9947,
17.9554

300.8429,
306.5139, 252.8472

■ 21.1714, 20.5948,
10.7489

■ 61.4738, 61.2317,
40.7742

■ 13.3625, 12.8281,
5.7862

■ 81.7511, 81.8377,
57.2236

■ 7.7573, 7.3103,
2.6488

■ 106.0590,
106.6144, 77.5910

■ 3.9906, 3.6569,
0.9175

■ 134.7626,
135.9463, 102.2949

■ 1.6968, 1.4836,
0.0000

168.2275,
170.2178, 131.7540

■ 0.4543, 0.2771,
0.0000

206.8189,

■ 0.0000, 0.0000,

209.8133, 166.3867

0.0000

250.9023,
255.1172, 206.6116

■ 31.5493, 30.9947,
17.9554

■ 31.5493, 30.9947,
17.9554

■ 29.4575, 28.1552,
13.1147

■ 33.9366, 34.1107,
23.8646

■ 27.6444, 25.5786,
9.2747

■ 36.6305, 37.5075,
30.9007

■ 26.0948, 23.2564,
6.3626

■ 39.6442, 41.1946,
39.1202

■ 24.7906, 21.1778,
4.2946

■ 42.9895, 45.1798,
48.5750

■ 23.7109, 19.3306,
2.9717

■ 46.6772, 49.4707,
59.3140

■ 22.9033, 17.8652,
2.2412

■ 50.7180, 54.0742,
71.3834

■ 55.1219, 58.9974,
84.8273

■ 59.8985, 64.2467,
99.6874

■ 62.8921, 68.9627,
104.6041

Harmonies

Analogous

The Analogous color harmony consists of three colors that are next to each other on the color wheel.



34.8836, 30.9947, 21.8123



31.5493, 30.9947, 17.9554



27.9034, 30.9947, 17.7257

Triad

The Triadic color harmony groups three colors that are evenly spaced from another and form a triangle on the color wheel.



31.5493, 30.9947, 17.9554



23.1449, 30.9947, 38.4919



34.5098, 30.9947, 50.6434

Complementary

The Complementary color scheme is a pair of colors which are on the opposite of each other on the color wheel.



31.5493, 30.9947, 17.9554



23.7066, 25.4083, 46.8348

Split Complementary

Split-complementary colors differ from the complementary color scheme. The scheme consists of three colors, the original color and two neighbors of the complement color.



31.0725, 30.9947, 57.3255



31.5493, 30.9947, 17.9554



24.6290, 30.9947, 49.3956

Square

The Square scheme is like the rectangle color scheme, but the four colors are evenly spaced on the color wheel.



31.5493, 30.9947, 17.9554



23.2495, 30.9947, 28.2306



27.4641, 30.9947, 56.8268



36.6872, 30.9947, 39.9411

Rectangle

The Rectangle color scheme consists of four colors that form a rectangle on the color wheel.



31.5493, 30.9947, 17.9554



25.7983, 30.9947, 19.5639



27.4641, 30.9947, 56.8268



33.4518, 30.9947, 53.5243

Sweetspot

The Sweet Spot groups the original color and five complimentary colors.



31.5501, 30.9962, 17.9560



71.2563, 73.9365, 69.1938



28.8416, 21.9576, 28.2178



15.2452, 15.7914, 14.5251



86.6293, 91.1408, 99.2523



17.0014, 17.8868, 19.4787

Same Dimension

The Same Dimension uses a secret algorithm to generate beautiful new colors.



31.5501, 30.9962, 17.9560



53.8667, 51.6796, 24.7930



37.4593, 43.2390, 20.0077



8.8547, 9.2218, 8.9658



16.0529, 12.6043, 1.5868



0.5630, 0.5123, 0.0692

Inverse Universe

The Inverse Universe completely reimagines the original color for something new.



23.7066, 25.4083, 46.8348



37.7723, 40.2187, 84.0668



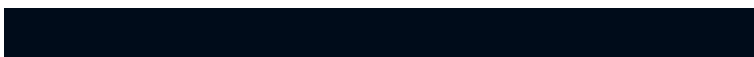
19.4840, 16.7440, 45.3850



8.3623, 8.8708, 10.7778



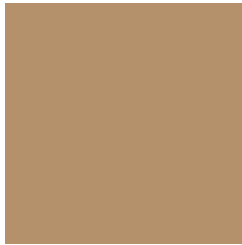
8.0902, 6.9808, 31.0580



0.3131, 0.3368, 0.9967

Previews

White Background



This preview shows how the XYZ color 31.5493, 30.9947, 17.9554 looks on a white background.

Color Contrast Check

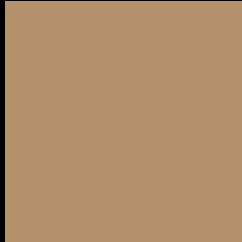
Large Text (above 18pt) WCAG AA × Fail

Any Text WCAG AA × Fail

Large Text (above 18pt) WCAG AAA × Fail

Any Text WCAG AAA × Fail

Black Background



This preview shows how the XYZ color 31.5493, 30.9947, 17.9554 looks on a black background.

Color Contrast Check

Large Text (above 18pt) WCAG AA ✓ Pass

Any Text WCAG AA ✓ Pass

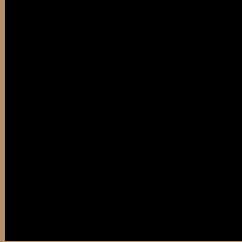
Large Text (above 18pt) WCAG AAA ✓ Pass

Any Text WCAG AAA ✓ Pass

If you want to check with other color combinations, try the [Color Contrast Checker](#).

XYZ 31.5493, 30.9947, 17.9554

Background



This preview shows how black text looks on a background with the XYZ color 31.5493, 30.9947, 17.9554.



This preview shows how white text looks on a background with the XYZ color 31.5493, 30.9947,

17.9554.

Color Blindness Simulation

Color vision deficiency is a very complex topic, and I could not describe the different causes any better than Wikipedia does, so if you want to learn more, you should check out their [article about color blindness](#).

Dichromacy



Original Color

31.5493, 30.9947, 17.9554

Protanopia

28.9312, 31.0239, 18.9314

Deuteranopia

31.5493, 30.9947, 17.9554



Tritanopia

34.5048, 30.8576, 32.9917

Trichromacy



Original Color

31.5493, 30.9947, 17.9554

Protanomaly

29.8164, 31.0126, 18.6019

Deuteranomaly

31.5493, 30.9947, 17.9554

Tritanomaly

33.3564, 30.8383, 26.7486

Monochromacy



Original Color

31.5493, 30.9947, 17.9554

Achromatopsia

29.4150, 30.9469, 33.7012

Achromatomaly

30.0209, 30.9255, 27.3086

CSS Examples

Text

The CSS property to change the color of the text to XYZ 31.5493, 30.9947, 17.9554 is called "color". The color property can be set on classes, ids or directly on the HTML element.

This example shows how text in the color `rgb(180, 145, 106)` looks like.

```
.text, #text, p{  
    color:rgb(180, 145, 106)  
}
```

If you want to add a text shadow in that color use the text-shadow property, you can generate a text shadow directly with our [CSS Text Shadow Generator](#).

Here you see how black text with a 4 pixel rgb(180, 145, 106) colored shadow looks like.

```
.shadow{ text-shadow: 4px 4px 2px rgb(180, 145, 106) }
```

Border

The CSS property to change the border of an element to XYZ 31.5493, 30.9947, 17.9554 is called "border". The border property can be set on classes, ids or directly on the HTML element.

This example shows the color as border, it can be applied via the CSS property "border" or "border-color".

```
.border, #border, table{ border:4px solid rgb(180, 145, 106) }
```


If only the border color should be changed use the property `border-color`.

```
.border{ border-color:rgb(180, 145, 106) }
```

If you want to add a box shadow in that color use:

Here you see how a box with a 4 pixel `rgb(180, 145, 106)` colored shadow looks like.

```
.boxshadow{ -moz-box-shadow:4px 4px 4px  
4px rgb(180, 145, 106); -webkit-box-  
shadow:4px 4px 4px 4px rgb(180, 145, 106);  
box-shadow:4px 4px 4px 4px rgb(180, 145,  
106) }
```

Background

The CSS property to change the background color of an element to XYZ 31.5493, 30.9947, 17.9554 is called "background". The background property can be set on classes, ids or directly on the HTML element.

```
.background, #background, body{  
background: rgb(180, 145, 106) }
```

If only the background color should be changed can be used:

```
.background{ background-color: rgb(180,  
145, 106) }
```

This example shows the color as background, it is applied via the CSS property "background".

To optimize and compress your CSS code, you can use our [online CSS compressor and optimizer](#) based on csstidy. If you want to create a linear or radial gradient as background or border, check our [CSS Gradient Generator](#).

Hey! You found this booklet interesting? Support Converting Colors with the new Membership Option!

The pro membership hides all ads, plus gives you double the colors in the color bucket, and more awesome pro features!

[Learn more, Memberships starting at \\$2.50/m!](#)

**Follow me
on Twitter!**

@ConvertingColor