

Converting Colors

XYZ(31.6683, 30.8011, 28.2529)

Have a look what the booklet for
XYZ(31.6683, 30.8011, 28.2529)
contains.

XYZ(31.7261, 30.8564, 28.3285)	3
<i>Conversions</i>	4
<i>Details</i>	6
<i>Harmonies</i>	12
<i>Previews</i>	24
<i>Color Blindness Simulation</i>	28
<i>CSS Examples</i>	31

Color

**XYZ(31.7261, 30.8564,
28.3285)**

Conversions

Conversions Part 1

Format	Color
Hex	AC918A
RGB	172, 145, 138
RGB Percent	67%, 57%, 54%
CMY	0.3255, 0.4314, 0.4588
CMYK	0.00, 0.16, 0.20, 0.33
HSL	12°, 17%, 61%
HSV	12°, 20%, 67%
XYZ	31.7261, 30.8564, 28.3285
YIQ	152.2750, 18.3390, 3.5470

Conversions

Conversions Part 2

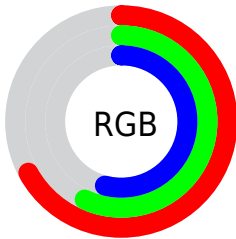
Format	Color
R_{YB}	172, 147, 138
Decimal	11309450
CIE _{Lab}	62.39, 8.97, 7.47
CIE _{LCh}	62, 11.672, 39.792
Yxy	30.8564, 0.3490, 0.3394
Android (android.graphics.Color)	4289499530 (0xFFAC918A)
YUV	152.2750, -7.0376, 17.2988
Hunter-Lab	55.5485, 4.7389, 8.6474

Details

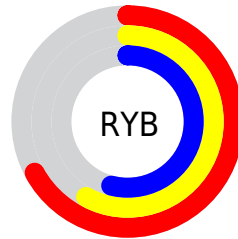
The XYZ color **31.7261, 30.8564, 28.3285** is a light color, and the websafe version is hex **CC9999**. A complement of this color would be **31.3826, 35.2913, 44.1879**, and the grayscale version is **29.9884, 31.5501, 34.3581**.

A 20% lighter version of the original color is **61.8223, 61.1024, 57.8258**, and **13.4614, 12.8109, 10.9958** is the 20% darker color. If you saturate the color by 10%, you get **28.6153, 26.4723, 21.6267**, and if you desaturate by 10%, it is **35.2867, 35.8240, 36.1539**.

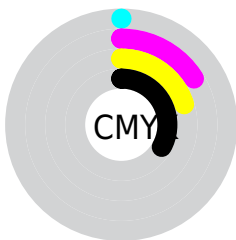
Distribution



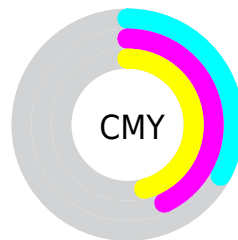
- Red (67%)
- Green (57%)
- Blue (54%)



- Red (67%)
- Yellow (58%)
- Blue (54%)



- Cyan (0%)
- Magenta (16%)
- Yellow (20%)
- Black (33%)



- Cyan (33%)
- Magenta (43%)
- Yellow (46%)

Brightness & Saturation Gradients

These gradients show how the XYZ color 31.7261, 30.8564, 28.3285 changes by changing the brightness by 10 percent. The first figure shows a shift by +10% for each color and the second figure -10%.

Similar to the brightness gradients but the following saturation gradients show a change of the XYZ color 31.7261, 30.8564, 28.3285 by changing the saturation by 10% instead.

■ 31.7261, 30.8564,
28.3285

■ 31.7261, 30.8564,
28.3285

301.6372,
305.8762, 307.9945

■ 21.3069, 20.4895,
18.3322

■ 61.7496, 61.0139,
58.0379

■ 13.4623, 12.7514,
11.0169

■ 82.0845, 81.5733,
78.5881

■ 7.8268, 7.2576,
5.9639

■ 106.4555,
106.2991, 103.4933

■ 4.0352, 3.6237,
2.7547

135.2277,
135.5755, 133.1722

■ 1.7221, 1.4654,
0.9708

168.7667,
169.7871, 168.0432

■ 0.4700, 0.2642,
0.0000

207.4377,

■ 0.0000, 0.0000,

209.3181, 208.5249

0.0000

251.6060,
254.5530, 255.0358

■ 31.7261, 30.8564,
28.3285

■ 31.7261, 30.8564,
28.3285

■ 28.6153, 26.4723,
21.6267

■ 35.2867, 35.8240,
36.1539

■ 25.9338, 22.6460,
15.9950

■ 39.3116, 41.3912,
45.1494

■ 23.6629, 19.3562,
11.3780

■ 43.8180, 47.5787,
55.3612

■ 21.7817, 16.5787,
7.7150

■ 48.8210, 54.4049,
66.8323

■ 20.2674, 14.2870,
4.9384

■ 54.3355, 61.8874,
79.6037

■ 19.0947, 12.4526,
2.9718

■ 60.3755, 70.0433,
93.7145

■ 18.2346, 11.0436,
1.7259

■ 66.4019, 78.6678,
106.2924

■ 17.6388, 10.0180,
1.0155

■ 70.5885, 87.0410,
107.6879

■ 17.6271, 9.9981,
1.0008

■ 70.8234, 87.5107,
107.7662

Harmonies

Analogous

The Analogous color harmony consists of three colors that are next to each other on the color wheel.



32.4264, 30.8564, 32.1386



31.7261, 30.8564, 28.3285



30.3906, 30.8564, 26.0725

Triad

The Triadic color harmony groups three colors that are evenly spaced from another and form a triangle on the color wheel.



31.7261, 30.8564, 28.3285



26.5672, 30.8564, 30.6792



29.8480, 30.8564, 42.9262

Complementary

The Complementary color scheme is a pair of colors which are on the opposite of each other on the color wheel.



31.7261, 30.8564, 28.3285



31.3826, 35.2913, 44.1879

Split Complementary

Split-complementary colors differ from the complementary color scheme. The scheme consists of three colors, the original color and two neighbors of the complement color.



28.2906, 30.8564, 42.4464



31.7261, 30.8564, 28.3285



26.4337, 30.8564, 35.0997

Square

The Square scheme is like the rectangle color scheme, but the four colors are evenly spaced on the color wheel.



31.7261, 30.8564, 28.3285



27.4255, 30.8564, 27.3428



27.0541, 30.8564, 39.4821



31.3167, 30.8564, 40.7397

Rectangle

The Rectangle color scheme consists of four colors that form a rectangle on the color wheel.



31.7261, 30.8564, 28.3285



29.3391, 30.8564, 25.6227



27.0541, 30.8564, 39.4821



29.3170, 30.8564, 43.0756

Sweetspot

The Sweet Spot groups the original color and five complimentary colors.



31.7269, 30.8578, 28.3291



66.5875, 68.5573, 71.3093



32.9118, 29.6719, 39.6858



14.3742, 14.7650, 15.2814



82.5889, 86.8899, 94.6231



15.4596, 16.2647, 17.7123

Same Dimension

The Same Dimension uses a secret algorithm to generate beautiful new colors.



31.7269, 30.8578, 28.3291



54.8256, 52.1416, 45.4753



34.4862, 36.3762, 29.2489



8.1339, 8.2727, 8.3815



13.1503, 7.5062, 0.7557



0.4035, 0.2842, 0.0336

Inverse Universe

The Inverse Universe completely reimagines the original color for something new.



31.3826, 35.2913, 44.1879



54.0758, 61.7535, 79.8753



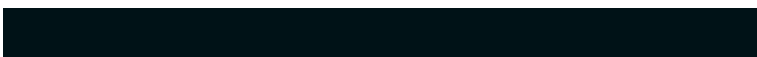
28.5493, 29.6249, 43.2435



8.0942, 8.7877, 10.2223



12.1932, 15.5202, 31.3976



0.3741, 0.5015, 0.8851

Previews

White Background



This preview shows how the XYZ color 31.7261, 30.8564, 28.3285 looks on a white background.

Color Contrast Check

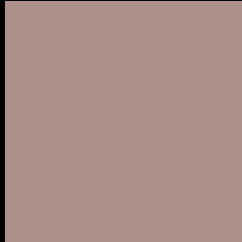
Large Text (above 18pt) WCAG AA × Fail

Any Text WCAG AA × Fail

Large Text (above 18pt) WCAG AAA × Fail

Any Text WCAG AAA × Fail

Black Background



This preview shows how the XYZ color 31.7261, 30.8564, 28.3285 looks on a black background.

Color Contrast Check

Large Text (above 18pt) WCAG AA ✓ Pass

Any Text WCAG AA ✓ Pass

Large Text (above 18pt) WCAG AAA ✓ Pass

Any Text WCAG AAA ✓ Pass

If you want to check with other color combinations, try the [Color Contrast Checker](#).

XYZ 31.7261, 30.8564, 28.3285

Background



This preview shows how black text looks on a background with the XYZ color 31.7261, 30.8564, 28.3285.



This preview shows how white text looks on a background with the XYZ color 31.7261, 30.8564,

Color Blindness Simulation

Color vision deficiency is a very complex topic, and I could not describe the different causes any better than Wikipedia does, so if you want to learn more, you should check out their [article about color blindness](#).

Dichromacy



Original Color

31.7261, 30.8564, 28.3285

Protanopia

29.4244, 30.8037, 29.5942

Deuteranopia

31.4439, 30.9388, 28.3593



Tritanopia

33.1108, 30.9767, 34.8058

Trichromacy



Original Color

31.7261, 30.8564, 28.3285

Protanomaly

30.2238, 30.7546, 29.1542

Deuteranomaly

31.6609, 31.0507, 28.3694

Tritanomaly

32.5521, 30.9689, 32.2789

Monochromacy



Original Color

31.7261, 30.8564, 28.3285

Achromatopsia

29.8446, 31.3989, 34.1934

Achromatomaly

30.3120, 30.9724, 31.9844

CSS Examples

Text

The CSS property to change the color of the text to XYZ 31.7261, 30.8564, 28.3285 is called "color". The color property can be set on classes, ids or directly on the HTML element.

This example shows how text in the color `rgb(172, 145, 138)` looks like.

```
.text, #text, p{  
    color:rgb(172, 145, 138)  
}
```

If you want to add a text shadow in that color use the text-shadow property, you can generate a text shadow directly with our [CSS Text Shadow Generator](#).

Here you see how black text with a 4 pixel rgb(172, 145, 138) colored shadow looks like.

```
.shadow{ text-shadow: 4px 4px 2px rgb(172, 145, 138) }
```

Border

The CSS property to change the border of an element to XYZ 31.7261, 30.8564, 28.3285 is called "border". The border property can be set on classes, ids or directly on the HTML element.

This example shows the color as border, it can be applied via the CSS property "border" or "border-color".

```
.border, #border, table{ border:4px solid rgb(172, 145, 138) }
```


If only the border color should be changed use the property `border-color`.

```
.border{ border-color:rgb(172, 145, 138) }
```

If you want to add a box shadow in that color use:

Here you see how a box with a 4 pixel `rgb(172, 145, 138)` colored shadow looks like.

```
.boxshadow{ -moz-box-shadow:4px 4px 4px  
4px rgb(172, 145, 138); -webkit-box-  
shadow:4px 4px 4px 4px rgb(172, 145, 138);  
box-shadow:4px 4px 4px 4px rgb(172, 145,  
138) }
```

Background

The CSS property to change the background color of an element to XYZ 31.7261, 30.8564, 28.3285 is called "background". The background property can be set on classes, ids or directly on the HTML element.

```
.background, #background, body{  
background: rgb(172, 145, 138) }
```

If only the background color should be changed can be used:

```
.background{ background-color: rgb(172,  
145, 138) }
```

This example shows the color as background, it is applied via the CSS property "background".

To optimize and compress your CSS code, you can use our [online CSS compressor and optimizer](#) based on csstidy. If you want to create a linear or radial gradient as background or border, check our [CSS Gradient Generator](#).

Hey! You found this booklet interesting? Support Converting Colors with the new Membership Option!

The pro membership hides all ads, plus gives you double the colors in the color bucket, and more awesome pro features!

[Learn more, Memberships starting at \\$2.50/m!](#)

**Follow me
on Twitter!**

@ConvertingColor