

Converting Colors

XYZ(31.6810, 31.3921, 34.8849)

Have a look what the booklet for
XYZ(31.6810, 31.3921, 34.8849)
contains.

XYZ(31.7325, 31.4054, 34.9612)	3
<i>Conversions</i>	4
<i>Details</i>	6
<i>Harmonies</i>	12
<i>Previews</i>	24
<i>Color Blindness Simulation</i>	28
<i>CSS Examples</i>	31

Color

**XYZ(31.7325, 31.4054,
34.9612)**

Conversions

Conversions Part 1

Format	Color
Hex	A4949A
RGB	164, 148, 154
RGB Percent	64%, 58%, 60%
CMY	0.3569, 0.4196, 0.3961
CMYK	0.00, 0.10, 0.06, 0.36
HSL	338°, 8%, 61%
HSV	338°, 10%, 64%
XYZ	31.7325, 31.4054, 34.9612
YIQ	153.4680, 7.6100, 5.2580

Conversions

Conversions Part 2

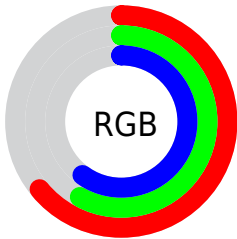
Format	Color
RYB	164, 148, 154
Decimal	10785946
CIELab	62.85, 7.00, -1.01
CIELCh	63, 7.072, 351.808
Yxy	31.4054, 0.3235, 0.3201
Android (android.graphics.Color)	4288976026 (0xFFA4949A)
YUV	153.4680, 0.2623, 9.2366
Hunter-Lab	56.0405, 3.0033, 2.2400

Details

The XYZ color **31.7325, 31.4054, 34.9612** is a light color, and the websafe version is hex **999999**. A complement of this color would be **31.6610, 35.3163, 37.4975**, and the grayscale version is **30.4796, 32.0669, 34.9208**.

A 20% lighter version of the original color is **61.7191, 61.8552, 68.3608**, and **13.4050, 12.9734, 14.6296** is the 20% darker color. If you saturate the color by 10%, you get **28.5226, 26.2938, 29.8570**, and if you desaturate by 10%, it is **35.3816, 37.2779, 40.5724**.

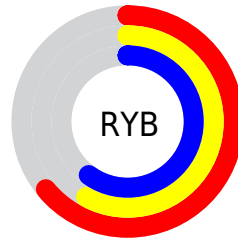
Distribution



Red (64%)

Green (58%)

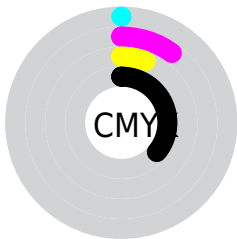
Blue (60%)



Red (64%)

Yellow (58%)

Blue (60%)

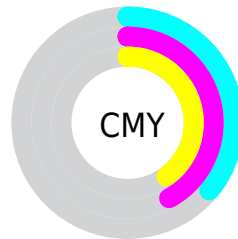


Cyan (0%)

Magenta (10%)

Yellow (6%)

Black (36%)



Cyan (36%)

Magenta (42%)

Yellow (40%)

Brightness & Saturation Gradients

These gradients show how the XYZ color 31.7325, 31.4054, 34.9612 changes by changing the brightness by 10 percent. The first figure shows a shift by +10% for each color and the second figure -10%.

Similar to the brightness gradients but the following saturation gradients show a change of the XYZ color 31.7325, 31.4054, 34.9612 by changing the saturation by 10% instead.

■ 31.7325, 31.4054,
34.9612

■ 31.7325, 31.4054,
34.9612

301.6659,
308.4017, 339.2961

■ 21.3118, 20.9077,
23.3497

■ 61.7595, 61.8778,
68.5765

■ 13.4659, 13.0566,
14.6442

■ 82.0966, 82.6213,
91.4174

■ 7.8293, 7.4675,
8.4262

106.4698,
107.5489, 118.8386

■ 4.0368, 3.7562,
4.2772

135.2445,
137.0449, 151.2584

■ 1.7230, 1.5381,
1.7786

168.7862,
171.4938, 189.0955

■ 0.4706, 0.3153,
0.4138

207.4600,

■ 0.0000, 0.0000,

211.2800, 232.7685

0.0000

251.6315,
256.7878, 282.6958

■ 31.7325, 31.4054,
34.9612

■ 31.7325, 31.4054,
34.9612

■ 28.5226, 26.2938,
29.8570

■ 35.3816, 37.2779,
40.5724

■ 25.7321, 21.9078,
25.2432

■ 39.4834, 43.9365,
46.7025

■ 23.3438, 18.2153,
21.1050

■ 44.0540, 51.4104,
53.3657

■ 21.3381, 15.1803,
17.4263

■ 49.1079, 59.7262,
60.5750

■ 19.6937, 12.7635,
14.1897

■ 54.6590, 68.9091,
68.3426

■ 18.3870, 10.9213,
11.3767

■ 60.7207, 78.9832,
76.6808

■ 17.3916, 9.6045,
8.9673

■ 64.7652, 84.8907,
84.7542

■ 16.6767, 8.7551,
6.9394

■ 66.2128, 85.4697,
92.3769

■ 16.1766, 8.2463,
5.2583

■ 67.7458, 86.0829,
100.4499

Harmonies

Analogous

The Analogous color harmony consists of three colors that are next to each other on the color wheel.



31.3385, 31.4054, 37.6020



31.7325, 31.4054, 34.9612



31.6135, 31.4054, 32.2507

Triad

The Triadic color harmony groups three colors that are evenly spaced from another and form a triangle on the color wheel.



31.7325, 31.4054, 34.9612



29.1630, 31.4054, 29.4759



28.7125, 31.4054, 38.5632

Complementary

The Complementary color scheme is a pair of colors which are on the opposite of each other on the color wheel.



31.7325, 31.4054, 34.9612



31.6610, 35.3163, 37.4975

Split Complementary

Split-complementary colors differ from the complementary color scheme. The scheme consists of three colors, the original color and two neighbors of the complement color.



28.1531, 31.4054, 36.2162



31.7325, 31.4054, 34.9612



28.4092, 31.4054, 31.0005

Square

The Square scheme is like the rectangle color scheme, but the four colors are evenly spaced on the color wheel.



31.7325, 31.4054, 34.9612



30.1162, 31.4054, 29.1803



28.0433, 31.4054, 33.4404



29.5852, 31.4054, 39.7539

Rectangle

The Rectangle color scheme consists of four colors that form a rectangle on the color wheel.



31.7325, 31.4054, 34.9612



31.2605, 31.4054, 30.7595



28.0433, 31.4054, 33.4404



28.4824, 31.4054, 37.8775

Sweetspot

The Sweet Spot groups the original color and five complimentary colors.



31.7334, 31.4068, 34.9619



61.9465, 63.9901, 70.1788



31.3662, 31.1172, 39.4755



13.4276, 13.8040, 15.1661



78.6606, 82.7571, 90.1225



14.0027, 14.7319, 16.0430

Same Dimension

The Same Dimension uses a secret algorithm to generate beautiful new colors.



31.7334, 31.4068, 34.9619



56.0876, 54.5883, 61.0865



31.5413, 31.8022, 32.4946



7.1785, 7.1278, 7.9263



12.4163, 6.3226, 4.1166



0.2833, 0.1418, 0.2046

Inverse Universe

The Inverse Universe completely reimagines the original color for something new.



31.7334, 31.4068, 34.9619



56.0876, 54.5883, 61.0865



31.8585, 34.8648, 40.1729



7.1785, 7.1278, 7.9263



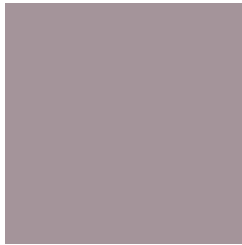
12.4163, 6.3226, 4.1166



0.2833, 0.1418, 0.2046

Previews

White Background



This preview shows how the XYZ color 31.7325, 31.4054, 34.9612 looks on a white background.

Color Contrast Check

Large Text (above 18pt) WCAG AA × Fail

Any Text WCAG AA × Fail

Large Text (above 18pt) WCAG AAA × Fail

Any Text WCAG AAA × Fail

Black Background



This preview shows how the XYZ color 31.7325, 31.4054, 34.9612 looks on a black background.

Color Contrast Check

Large Text (above 18pt) WCAG AA ✓ Pass

Any Text WCAG AA ✓ Pass

Large Text (above 18pt) WCAG AAA ✓ Pass

Any Text WCAG AAA ✓ Pass

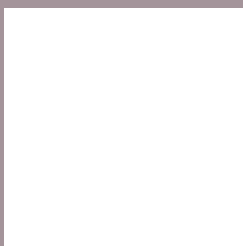
If you want to check with other color combinations, try the [Color Contrast Checker](#).

XYZ 31.7325, 31.4054, 34.9612

Background



This preview shows how black text looks on a background with the XYZ color 31.7325, 31.4054, 34.9612.



This preview shows how white text looks on a background with the XYZ color 31.7325, 31.4054,

Color Blindness Simulation

Color vision deficiency is a very complex topic, and I could not describe the different causes any better than Wikipedia does, so if you want to learn more, you should check out their [article about color blindness](#).

Dichromacy



Original Color

31.7325, 31.4054, 34.9612

Protanopia

30.3938, 31.4035, 35.9121

Deuteranopia

31.9923, 31.3075, 34.9286



Tritanopia

32.2088, 31.3700, 37.1583

Trichromacy



Original Color

31.7325, 31.4054, 34.9612

Protanomaly

30.9233, 31.4484, 35.4507

Deuteranomaly

31.7835, 31.1999, 34.9189

Tritanomaly

32.0366, 31.3011, 36.2515

Monochromacy



Original Color

31.7325, 31.4054, 34.9612

Achromatopsia

30.2779, 31.8547, 34.6897

Achromatomaly

30.7210, 31.6012, 34.6175

CSS Examples

Text

The CSS property to change the color of the text to XYZ 31.7325, 31.4054, 34.9612 is called "color". The color property can be set on classes, ids or directly on the HTML element.

This example shows how text in the color `rgb(164, 148, 154)` looks like.

```
.text, #text, p{  
    color:rgb(164, 148, 154)  
}
```

If you want to add a text shadow in that color use the text-shadow property, you can generate a text shadow directly with our [CSS Text Shadow Generator](#).

Here you see how black text with a 4 pixel rgb(164, 148, 154) colored shadow looks like.

```
.shadow{ text-shadow: 4px 4px 2px rgb(164, 148, 154) }
```

Border

The CSS property to change the border of an element to XYZ 31.7325, 31.4054, 34.9612 is called "border". The border property can be set on classes, ids or directly on the HTML element.

This example shows the color as border, it can be applied via the CSS property "border" or "border-color".

```
.border, #border, table{ border:4px solid rgb(164, 148, 154) }
```


If only the border color should be changed use the property `border-color`.

```
.border{ border-color:rgb(164, 148, 154) }
```

If you want to add a box shadow in that color use:

Here you see how a box with a 4 pixel `rgb(164, 148, 154)` colored shadow looks like.

```
.boxshadow{ -moz-box-shadow:4px 4px 4px  
4px rgb(164, 148, 154); -webkit-box-  
shadow:4px 4px 4px 4px rgb(164, 148, 154);  
box-shadow:4px 4px 4px 4px rgb(164, 148,  
154) }
```

Background

The CSS property to change the background color of an element to XYZ 31.7325, 31.4054, 34.9612 is called "background". The background property can be set on classes, ids or directly on the HTML element.

```
.background, #background, body{  
background: rgb(164, 148, 154) }
```

If only the background color should be changed can be used:

```
.background{ background-color: rgb(164,  
148, 154) }
```

This example shows the color as background, it is applied via the CSS property "background".

To optimize and compress your CSS code, you can use our [online CSS compressor and optimizer](#) based on csstidy. If you want to create a linear or radial gradient as background or border, check our [CSS Gradient Generator](#).

Hey! You found this booklet interesting? Support Converting Colors with the new Membership Option!

The pro membership hides all ads, plus gives you double the colors in the color bucket, and more awesome pro features!

[Learn more, Memberships starting at \\$2.50/m!](#)

**Follow me
on Twitter!**

@ConvertingColor