

Converting Colors

XYZ(31.6926, 27.8868, 24.3149)

Have a look what the booklet for
XYZ(31.6926, 27.8868, 24.3149)
contains.

XYZ(31.8459, 28.0079, 24.4965)	3
<i>Conversions</i>	4
<i>Details</i>	6
<i>Harmonies</i>	12
<i>Previews</i>	24
<i>Color Blindness Simulation</i>	28
<i>CSS Examples</i>	31

Color

**XYZ(31.8459, 28.0079,
24.4965)**

Conversions

Conversions Part 1

Format	Color
Hex	B88381
RGB	184, 131, 129
RGB Percent	72%, 51%, 51%
CMY	0.2784, 0.4863, 0.4941
CMYK	0.00, 0.29, 0.30, 0.28
HSL	2°, 28%, 61%
HSV	2°, 30%, 72%
XYZ	31.8459, 28.0079, 24.4965
YIQ	146.6190, 32.2300, 10.6140

Conversions

Conversions Part 2

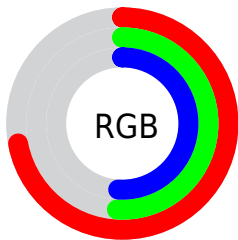
Format	Color
RYB	184, 131, 129
Decimal	12092289
CIELab	59.90, 20.14, 9.21
CIELCh	60, 22.147, 24.586
Yxy	28.0079, 0.3775, 0.3320
Android (android.graphics.Color)	4290282369 (0xFFB88381)
YUV	146.6190, -8.6862, 32.7831
Hunter-Lab	52.9225, 14.7973, 9.6019

Details

The XYZ color **31.8459, 28.0079, 24.4965** is a light color, and the websafe version is hex **CC9999**. A complement of this color would be **34.4324, 41.5824, 51.5589**, and the grayscale version is **27.6019, 29.0394, 31.6239**.

A 20% lighter version of the original color is **61.8596, 56.3592, 51.8740**, and **13.5963, 11.2099, 9.0365** is the 20% darker color. If you saturate the color by 10%, you get **28.5504, 23.2010, 17.8975**, and if you desaturate by 10%, it is **35.7707, 33.7205, 32.3924**.

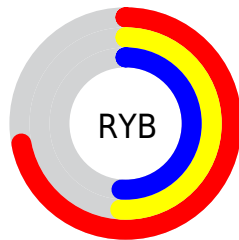
Distribution



Red (72%)

Green (51%)

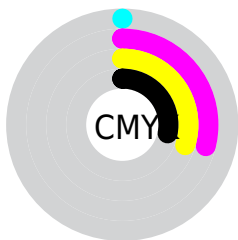
Blue (51%)



Red (72%)

Yellow (51%)

Blue (51%)

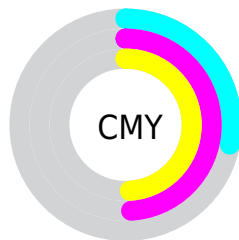


Cyan (0%)

Magenta (29%)

Yellow (30%)

Black (28%)



Cyan (28%)


Magenta (49%)


Yellow (49%)

Brightness & Saturation Gradients


These gradients show how the XYZ color 31.8459, 28.0079, 24.4965 changes by changing the brightness by 10 percent. The first figure shows a shift by +10% for each color and the second figure -10%.


Similar to the brightness gradients but the following saturation gradients show a change of the XYZ color 31.8459, 28.0079, 24.4965 by changing the saturation by 10% instead.


 31.8459, 28.0079,
24.4965


 31.8459, 28.0079,
24.4965


302.1745,
292.5047, 288.6881


 21.3988, 18.3316,
15.4867


 61.9363, 56.4971,
51.7932

 13.5299, 11.1883,
9.0113


 82.3102, 76.0787,
70.9171

 7.8740, 6.1937,
4.6516


 106.7239, 99.7310,
94.2496

 4.0655, 2.9632,
1.9892

135.5425,
127.8382, 122.2091

 1.7393, 1.1125,
0.5486

169.1315,
160.7847, 155.2141

 0.4807, 0.0000,
0.0000

207.8563,

 0.0000, 0.0000,

198.9551, 193.6833

0.0000

252.0822,
242.7336, 238.0351

■ 31.8459, 28.0079,
24.4965

■ 31.8459, 28.0079,
24.4965

■ 28.5504, 23.2010,
17.8975

■ 35.7707, 33.7205,
32.3924

■ 25.8493, 19.2496,
12.5245

■ 40.3526, 40.3777,
41.6477

■ 23.7078, 16.1047,
8.3024

■ 45.6208, 48.0210,
52.3225

■ 22.0868, 13.7108,
5.1474

■ 51.6018, 56.6883,
64.4732

■ 20.9418, 12.0052,
2.9638

■ 58.3208, 66.4154,
78.1530

■ 20.2211, 10.9154,
1.6395

■ 65.8017, 77.2365,
93.4124

■ 19.8432, 10.3405,
0.9558

■ 73.5772, 88.9304,
107.8951

■ 19.8400, 10.3359,
0.9493

Harmonies

Analogous

The Analogous color harmony consists of three colors that are next to each other on the color wheel.



32.3740, 28.0079, 31.9801



31.8459, 28.0079, 24.4965



29.8781, 28.0079, 19.5372

Triad

The Triadic color harmony groups three colors that are evenly spaced from another and form a triangle on the color wheel.



31.8459, 28.0079, 24.4965



22.4530, 28.0079, 22.3745



26.1138, 28.0079, 48.6539

Complementary

The Complementary color scheme is a pair of colors which are on the opposite of each other on the color wheel.



31.8459, 28.0079, 24.4965



34.4324, 41.5824, 51.5589

Split Complementary

Split-complementary colors differ from the complementary color scheme. The scheme consists of three colors, the original color and two neighbors of the complement color.



23.6090, 28.0079, 44.9358



31.8459, 28.0079, 24.4965



21.5928, 28.0079, 29.0582

Square

The Square scheme is like the rectangle color scheme, but the four colors are evenly spaced on the color wheel.



31.8459, 28.0079, 24.4965



24.4340, 28.0079, 18.4715



22.0007, 28.0079, 37.4025



28.9341, 28.0079, 46.8541

Rectangle

The Rectangle color scheme consists of four colors that form a rectangle on the color wheel.



31.8459, 28.0079, 24.4965



28.0837, 28.0079, 17.8718



22.0007, 28.0079, 37.4025



25.2094, 28.0079, 47.9908

Sweetspot

The Sweet Spot groups the original color and five complimentary colors.



31.8466, 28.0092, 24.4971



73.8137, 74.1590, 76.8406



36.0784, 29.2755, 48.0956



15.6343, 15.5829, 16.0019



88.6918, 93.3107, 101.6153



17.8044, 18.7317, 20.3988

Same Dimension

The Same Dimension uses a secret algorithm to generate beautiful new colors.



31.8466, 28.0092, 24.4971



53.5982, 44.7487, 36.1264



36.0136, 36.3432, 25.8861



9.0301, 9.0632, 9.3803



13.6849, 7.1461, 0.6581



0.4913, 0.2698, 0.0262

Inverse Universe

The Inverse Universe completely reimagines the original color for something new.



34.4324, 41.5824, 51.5589



59.0536, 73.3974, 93.2593



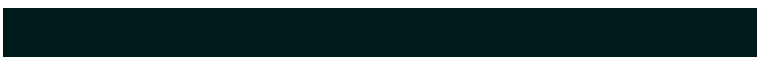
29.3712, 31.4600, 49.8719



9.2379, 10.1530, 11.5523



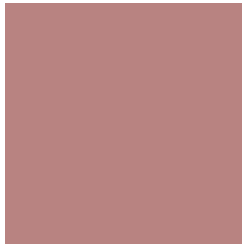
16.8504, 24.1606, 35.0284



0.6028, 0.8692, 1.2378

Previews

White Background



This preview shows how the XYZ color 31.8459, 28.0079, 24.4965 looks on a white background.

Color Contrast Check

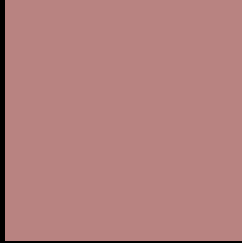
Large Text (above 18pt) WCAG AA ✓ Pass

Any Text WCAG AA ✗ Fail

Large Text (above 18pt) WCAG AAA ✗ Fail

Any Text WCAG AAA ✗ Fail

Black Background



This preview shows how the XYZ color 31.8459, 28.0079, 24.4965 looks on a black background.

Color Contrast Check

Large Text (above 18pt) WCAG AA ✓ Pass

Any Text WCAG AA ✓ Pass

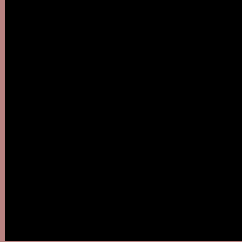
Large Text (above 18pt) WCAG AAA ✓ Pass

Any Text WCAG AAA × Fail

If you want to check with other color combinations, try the [Color Contrast Checker](#).

XYZ 31.8459, 28.0079, 24.4965

Background



This preview shows how black text looks on a background with the XYZ color 31.8459, 28.0079, 24.4965.



This preview shows how white text looks on a background with the XYZ color 31.8459, 28.0079,

Color Blindness Simulation

Color vision deficiency is a very complex topic, and I could not describe the different causes any better than Wikipedia does, so if you want to learn more, you should check out their [article about color blindness](#).

Dichromacy



Original Color

31.8459, 28.0079, 24.4965

Protanopia

26.8116, 28.1137, 27.3059

Deuteranopia

28.5804, 27.9969, 23.9763



Tritanopia

32.5180, 27.8789, 28.0934

Trichromacy



Original Color

31.8459, 28.0079, 24.4965

Protanomaly

28.3665, 27.8401, 26.0689

Deuteranomaly

29.7137, 27.9375, 24.2485

Tritanomaly

32.3634, 28.0288, 26.6260

Monochromacy



Original Color

31.8459, 28.0079, 24.4965

Achromatopsia

27.7328, 29.1771, 31.7738

Achromatomaly

28.7557, 28.4168, 28.7803

CSS Examples

Text

The CSS property to change the color of the text to XYZ 31.8459, 28.0079, 24.4965 is called "color". The color property can be set on classes, ids or directly on the HTML element.

This example shows how text in the color `rgb(184, 131, 129)` looks like.

```
.text, #text, p{  
    color:rgb(184, 131, 129)  
}
```

If you want to add a text shadow in that color use the text-shadow property, you can generate a text shadow directly with our [CSS Text Shadow Generator](#).

Here you see how black text with a 4 pixel rgb(184, 131, 129) colored shadow looks like.

```
.shadow{ text-shadow: 4px 4px 2px rgb(184, 131, 129) }
```

Border

The CSS property to change the border of an element to XYZ 31.8459, 28.0079, 24.4965 is called "border". The border property can be set on classes, ids or directly on the HTML element.

This example shows the color as border, it can be applied via the CSS property "border" or "border-color".

```
.border, #border, table{ border:4px solid rgb(184, 131, 129) }
```


If only the border color should be changed use the property `border-color`.

```
.border{ border-color:rgb(184, 131, 129) }
```

If you want to add a box shadow in that color use:

Here you see how a box with a 4 pixel `rgb(184, 131, 129)` colored shadow looks like.

```
.boxshadow{ -moz-box-shadow:4px 4px 4px  
4px rgb(184, 131, 129); -webkit-box-  
shadow:4px 4px 4px 4px rgb(184, 131, 129);  
box-shadow:4px 4px 4px 4px rgb(184, 131,  
129) }
```

Background

The CSS property to change the background color of an element to XYZ 31.8459, 28.0079, 24.4965 is called "background". The background property can be set on classes, ids or directly on the HTML element.

```
.background, #background, body{  
background: rgb(184, 131, 129) }
```

If only the background color should be changed can be used:

```
.background{ background-color: rgb(184,  
131, 129) }
```

This example shows the color as background, it is applied via the CSS property "background".

To optimize and compress your CSS code, you can use our [online CSS compressor and optimizer](#) based on csstidy. If you want to create a linear or radial gradient as background or border, check our [CSS Gradient Generator](#).

Hey! You found this booklet interesting? Support Converting Colors with the new Membership Option!

The pro membership hides all ads, plus gives you double the colors in the color bucket, and more awesome pro features!

[Learn more, Memberships starting at \\$2.50/m!](#)

**Follow me
on Twitter!**

@ConvertingColor