

Converting Colors

XYZ(31.8848, 29.2937, 13.6466)

Have a look what the booklet for
XYZ(31.8848, 29.2937, 13.6466)
contains.

XYZ(31.8848, 29.2937, 13.6466)	3
<i>Conversions</i>	4
<i>Details</i>	6
<i>Harmonies</i>	12
<i>Previews</i>	24
<i>Color Blindness Simulation</i>	28
<i>CSS Examples</i>	31

Color

**XYZ(31.8848, 29.2937,
13.6466)**

Conversions

Conversions Part 1

Format	Color
Hex	BE885A
RGB	190, 136, 90
RGB Percent	75%, 53%, 35%
CMY	0.2549, 0.4666, 0.6471
CMYK	0.00, 0.28, 0.53, 0.25
HSL	28°, 43%, 55%
HSV	28°, 53%, 75%
XYZ	31.8848, 29.2937, 13.6466
YIQ	146.9020, 46.9500, -2.8580

Conversions

Conversions Part 2

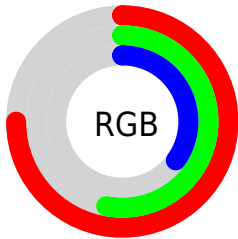
Format	Color
R _Y B	190, 175, 90
Decimal	12486746
CIE Lab	61.04, 15.35, 32.74
CIE LCh	61, 36.158, 64.882
Yxy	29.2937, 0.4261, 0.3915
Android (android.graphics.Color)	4290676826 (0xFFBE885A)
YUV	146.9020, -28.0527, 37.7969
Hunter-Lab	54.1237, 10.4398, 22.9373

Details

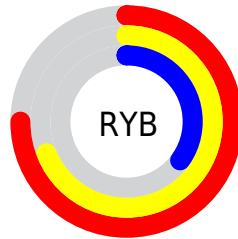
The XYZ color **31.8848, 29.2937, 13.6466** is a dark color, and the websafe version is hex **CC9966**. A complement of this color would be **23.4834, 25.8366, 52.4641**, and the grayscale version is **27.7920, 29.2394, 31.8417**.

A 20% lighter version of the original color is **62.0722, 58.4580, 33.2113**, and **13.5953, 11.8983, 3.8656** is the 20% darker color. If you saturate the color by 10%, you get **29.8009, 26.2590, 9.4593**, and if you desaturate by 10%, it is **34.3152, 32.6906, 18.9697**.

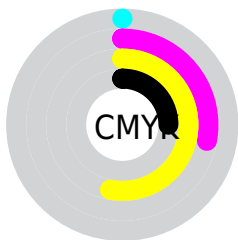
Distribution



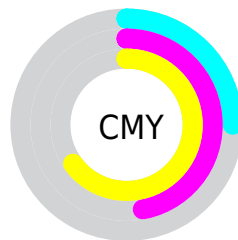
- Red (75%)
- Green (53%)
- Blue (35%)



- Red (75%)
- Yellow (69%)
- Blue (35%)



- Cyan (0%)
- Magenta (28%)
- Yellow (53%)
- Black (25%)





- Cyan (25%)
- Magenta (47%)
- Yellow (65%)

Brightness & Saturation Gradients


These gradients show how the XYZ color 31.8848, 29.2937, 13.6466 changes by changing the brightness by 10 percent. The first figure shows a shift by +10% for each color and the second figure -10%.


Similar to the brightness gradients but the following saturation gradients show a change of the XYZ color 31.8848, 29.2937, 13.6466 by changing the saturation by 10% instead.


 31.8848, 29.2937,
13.6466


 31.8848, 29.2937,
13.6466


302.3488,
298.5982, 226.3726


 21.4286, 19.3031,
7.7394


 61.9969, 58.5434,
33.1687

 13.5519, 11.8895,
3.8432


 82.3835, 78.5713,
47.6206

 7.8893, 6.6685,
1.5398


 106.8110,
102.7137, 65.7579

 4.0754, 3.2556,
0.2473

 135.6447,
131.3552, 87.9989

 1.7449, 1.2666,
0.0000

169.2499,
164.8799, 114.7624

 0.4841, 0.1151,
0.0000

207.9921,

 0.0000, 0.0000,

203.6724, 146.4668

0.0000

252.2366,
248.1170, 183.5307

■ 31.8848, 29.2937,
13.6466

■ 31.8848, 29.2937,
13.6466

■ 29.8009, 26.2590,
9.4593

■ 34.3152, 32.6906,
18.9697

■ 28.0414, 23.5679,
6.3201

■ 37.1079, 36.4586,
25.5040

■ 26.5845, 21.2066,
4.1311

■ 40.2805, 40.6115,
33.3201

■ 25.4038, 19.1577,
2.7744

■ 43.8485, 45.1610,
42.4829

■ 24.6765, 17.8299,
2.1409

■ 47.8263, 50.1182,
53.0527

■ 52.2279, 55.4939,
65.0862

■ 57.0662, 61.2982,
78.6368

■ 62.3538, 67.5411,
93.7555

■ 67.1212, 73.8394,
105.3225

Harmonies

Analogous

The Analogous color harmony consists of three colors that are next to each other on the color wheel.



35.9902, 29.2937, 19.1981



31.8848, 29.2937, 13.6466



27.0759, 29.2937, 12.3453

Triad

The Triadic color harmony groups three colors that are evenly spaced from another and form a triangle on the color wheel.



31.8848, 29.2937, 13.6466



19.7282, 29.2937, 34.1643



33.3748, 29.2937, 58.3909

Complementary

The Complementary color scheme is a pair of colors which are on the opposite of each other on the color wheel.



31.8848, 29.2937, 13.6466



23.4834, 25.8366, 52.4641

Split Complementary

Split-complementary colors differ from the complementary color scheme. The scheme consists of three colors, the original color and two neighbors of the complement color.



28.6240, 29.2937, 65.5253



31.8848, 29.2937, 13.6466



21.0283, 29.2937, 49.2317

Square

The Square scheme is like the rectangle color scheme, but the four colors are evenly spaced on the color wheel.



31.8848, 29.2937, 13.6466



20.3929, 29.2937, 22.0673



24.1577, 29.2937, 61.7713



36.9165, 29.2937, 44.2798

Rectangle

The Rectangle color scheme consists of four colors that form a rectangle on the color wheel.



31.8848, 29.2937, 13.6466



24.1886, 29.2937, 13.6208



24.1577, 29.2937, 61.7713



31.8476, 29.2937, 61.8419

Sweetspot

The Sweet Spot groups the original color and five complimentary colors.



31.8855, 29.2951, 13.6472



77.0299, 78.7631, 70.6717



30.0022, 20.3040, 29.1260



16.6181, 16.9172, 14.7553



92.9021, 97.7402, 106.4391



19.4759, 20.4902, 22.3138

Same Dimension

The Same Dimension uses a secret algorithm to generate beautiful new colors.



31.8855, 29.2951, 13.6472



53.5265, 46.8709, 16.2413



40.4294, 46.3830, 16.4951



9.8821, 10.2401, 10.0323



16.4853, 12.0094, 1.4492



0.7112, 0.6013, 0.0786

Inverse Universe

The Inverse Universe completely reimagines the original color for something new.



23.4834, 25.8366, 52.4641



36.6672, 39.9053, 94.0491



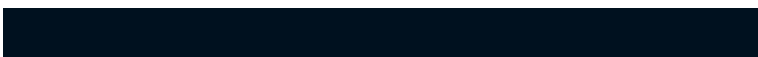
17.6031, 14.0761, 50.5040



9.4317, 10.0557, 12.1160



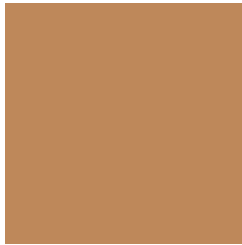
9.4576, 9.0269, 33.6368



0.4352, 0.4831, 1.3392

Previews

White Background



This preview shows how the XYZ color 31.8848, 29.2937, 13.6466 looks on a white background.

Color Contrast Check

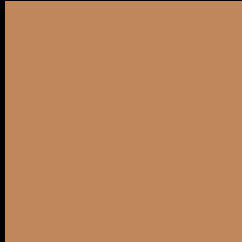
Large Text (above 18pt) WCAG AA ✓ Pass

Any Text WCAG AA × Fail

Large Text (above 18pt) WCAG AAA × Fail

Any Text WCAG AAA × Fail

Black Background



This preview shows how the XYZ color 31.8848, 29.2937, 13.6466 looks on a black background.

Color Contrast Check

Large Text (above 18pt) WCAG AA ✓ Pass

Any Text WCAG AA ✓ Pass

Large Text (above 18pt) WCAG AAA ✓ Pass

Any Text WCAG AAA × Fail

If you want to check with other color combinations, try the [Color Contrast Checker](#).

XYZ 31.8848, 29.2937, 13.6466

Background



This preview shows how black text looks on a background with the XYZ color 31.8848, 29.2937, 13.6466.



This preview shows how white text looks on a background with the XYZ color 31.8848, 29.2937,

Color Blindness Simulation

Color vision deficiency is a very complex topic, and I could not describe the different causes any better than Wikipedia does, so if you want to learn more, you should check out their [article about color blindness](#).

Dichromacy



Original Color

31.8848, 29.2937, 13.6466

Protanopia

27.3082, 29.5650, 14.8570

Deuteranopia

29.9185, 29.3547, 13.5403



Tritanopia

34.9644, 29.3280, 28.6290

Trichromacy



Original Color

31.8848, 29.2937, 13.6466

Protanomaly

28.9623, 29.5075, 14.5250

Deuteranomaly

30.5642, 29.2538, 13.4868

Tritanomaly

33.7564, 29.2451, 22.2781

Monochromacy



Original Color

31.8848, 29.2937, 13.6466

Achromatopsia

27.7328, 29.1771, 31.7738

Achromatomaly

28.6926, 28.9378, 23.8120

CSS Examples

Text

The CSS property to change the color of the text to XYZ 31.8848, 29.2937, 13.6466 is called "color". The color property can be set on classes, ids or directly on the HTML element.

This example shows how text in the color `rgb(190, 136, 90)` looks like.

```
.text, #text, p{  
    color:rgb(190, 136, 90)  
}
```

If you want to add a text shadow in that color use the text-shadow property, you can generate a text shadow directly with our [CSS Text Shadow Generator](#).

Here you see how black text with a 4 pixel rgb(190, 136, 90) colored shadow looks like.

```
.shadow{ text-shadow: 4px 4px 2px rgb(190, 136, 90) }
```

Border

The CSS property to change the border of an element to XYZ 31.8848, 29.2937, 13.6466 is called "border". The border property can be set on classes, ids or directly on the HTML element.

This example shows the color as border, it can be applied via the CSS property "border" or "border-color".

```
.border, #border, table{ border:4px solid rgb(190, 136, 90) }
```


If only the border color should be changed use the property `border-color`.

```
.border{ border-color:rgb(190, 136, 90) }
```

If you want to add a box shadow in that color use:

Here you see how a box with a 4 pixel `rgb(190, 136, 90)` colored shadow looks like.

```
.boxshadow{ -moz-box-shadow:4px 4px 4px  
4px rgb(190, 136, 90); -webkit-box-  
shadow:4px 4px 4px 4px rgb(190, 136, 90);  
box-shadow:4px 4px 4px 4px rgb(190, 136,  
90) }
```

Background

The CSS property to change the background color of an element to XYZ 31.8848, 29.2937, 13.6466 is called "background". The background property can be set on classes, ids or directly on the HTML element.

```
.background, #background, body{  
background: rgb(190, 136, 90) }
```

If only the background color should be changed can be used:

```
.background{ background-color: rgb(190,  
136, 90) }
```

This example shows the color as background, it is applied via the CSS property "background".

To optimize and compress your CSS code, you can use our [online CSS compressor and optimizer](#) based on csstidy. If you want to create a linear or radial gradient as background or border, check our [CSS Gradient Generator](#).

Hey! You found this booklet interesting? Support Converting Colors with the new Membership Option!

The pro membership hides all ads, plus gives you double the colors in the color bucket, and more awesome pro features!

[Learn more, Memberships starting at \\$2.50/m!](#)

**Follow me
on Twitter!**

@ConvertingColor