

Converting Colors

XYZ(31.8980, 28.1233, 24.7562)

Have a look what the booklet for
XYZ(31.8980, 28.1233, 24.7562)
contains.

XYZ(31.9127, 28.0347, 24.8483)	3
<i>Conversions</i>	4
<i>Details</i>	6
<i>Harmonies</i>	12
<i>Previews</i>	24
<i>Color Blindness Simulation</i>	28
<i>CSS Examples</i>	31

Color

**XYZ(31.9127, 28.0347,
24.8483)**

Conversions

Conversions Part 1

Format	Color
Hex	B88382
RGB	184, 131, 130
RGB Percent	72%, 51%, 51%
CMY	0.2784, 0.4863, 0.4902
CMYK	0.00, 0.29, 0.29, 0.28
HSL	1°, 28%, 62%
HSV	1°, 29%, 72%
XYZ	31.9127, 28.0347, 24.8483
YIQ	146.7330, 31.9090, 10.9250

Conversions

Conversions Part 2

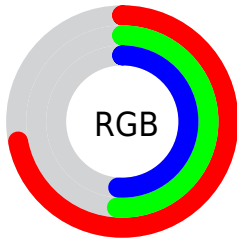
Format	Color
RYB	184, 131, 130
Decimal	12092290
CIELab	59.92, 20.28, 8.68
CIElCh	60, 22.056, 23.166
Yxy	28.0347, 0.3763, 0.3306
Android (android.graphics.Color)	4290282370 (0xFFB88382)
YUV	146.7330, -8.2494, 32.6832
Hunter-Lab	52.9478, 14.9269, 9.2388

Details

The XYZ color **31.9127, 28.0347, 24.8483** is a light color, and the websafe version is hex **CC9999**. A complement of this color would be **34.7904, 42.0718, 51.6344**, and the grayscale version is **27.6473, 29.0872, 31.6759**.

A 20% lighter version of the original color is **61.9634, 56.4006, 52.4203**, and **13.6336, 11.2248, 9.2326** is the 20% darker color. If you saturate the color by 10%, you get **28.5688, 23.1498, 18.1756**, and if you desaturate by 10%, it is **35.9016, 33.8560, 32.8262**.

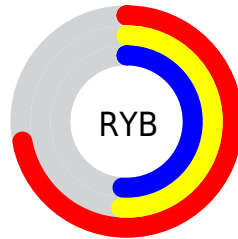
Distribution



Red (72%)

Green (51%)

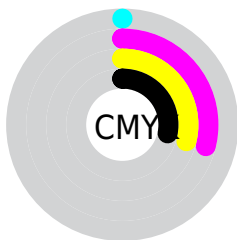
Blue (51%)



Red (72%)

Yellow (51%)

Blue (51%)

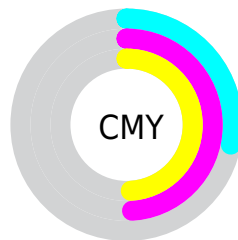


Cyan (0%)

Magenta (29%)

Yellow (29%)

Black (28%)



Cyan (28%)


Magenta (49%)


Yellow (49%)

Brightness & Saturation Gradients


These gradients show how the XYZ color 31.9127, 28.0347, 24.8483 changes by changing the brightness by 10 percent. The first figure shows a shift by +10% for each color and the second figure -10%.


Similar to the brightness gradients but the following saturation gradients show a change of the XYZ color 31.9127, 28.0347, 24.8483 by changing the saturation by 10% instead.


 31.9127, 28.0347,
24.8483


 31.9127, 28.0347,
24.8483


302.4737,
292.6327, 290.5051


 21.4501, 18.3518,
15.7461


 62.0403, 56.5398,
52.3721

 13.5677, 11.2029,
9.1922


 82.4360, 76.1309,
71.6307

 7.9003, 6.2035,
4.7683


 106.8734, 99.7934,
95.1119

 4.0825, 2.9692,
2.0556

135.7179,
127.9119, 123.2342

 1.7489, 1.1157,
0.5892

169.3348,
160.8707, 156.4161

 0.4866, 0.0000,
0.0000

208.0895,

 0.0000, 0.0000,

199.0541, 195.0762

0.0000

252.3474,
242.8467, 239.6330

■ 31.9127, 28.0347,
24.8483

■ 31.9127, 28.0347,
24.8483

■ 28.5688, 23.1498,
18.1756

■ 35.9016, 33.8560,
32.8262

■ 25.8341, 19.1487,
12.7371

■ 40.5646, 40.6547,
42.1719

■ 23.6725, 15.9798,
8.4577

■ 45.9317, 48.4743,
52.9458

■ 22.0432, 13.5845,
5.2533

■ 52.0302, 57.3544,
65.2043

■ 20.9002, 11.8966,
3.0285

■ 58.8863, 67.3327,
79.0007

■ 20.1895, 10.8387,
1.6713

■ 66.5246, 78.4448,
94.3857

■ 19.8237, 10.2928,
0.9764

■ 73.5772, 88.9303,
107.8951

■ 19.8043, 10.2646,
0.9375

Harmonies

Analogous

The Analogous color harmony consists of three colors that are next to each other on the color wheel.



32.3616, 28.0347, 32.3981



31.9127, 28.0347, 24.8483



30.0083, 28.0347, 19.7658

Triad

The Triadic color harmony groups three colors that are evenly spaced from another and form a triangle on the color wheel.



31.9127, 28.0347, 24.8483



22.5624, 28.0347, 22.1777



26.0102, 28.0347, 48.5515

Complementary

The Complementary color scheme is a pair of colors which are on the opposite of each other on the color wheel.



31.9127, 28.0347, 24.8483



34.7904, 42.0718, 51.6344

Split Complementary

Split-complementary colors differ from the complementary color scheme. The scheme consists of three colors, the original color and two neighbors of the complement color.



23.5450, 28.0347, 44.6153



31.9127, 28.0347, 24.8483



21.6467, 28.0347, 28.7256

Square

The Square scheme is like the rectangle color scheme, but the four colors are evenly spaced on the color wheel.



31.9127, 28.0347, 24.8483



24.5823, 28.0347, 18.4232



21.9934, 28.0347, 37.0065



28.8224, 28.0347, 47.0219

Rectangle

The Rectangle color scheme consists of four colors that form a rectangle on the color wheel.



31.9127, 28.0347, 24.8483



28.2370, 28.0347, 18.0100



21.9934, 28.0347, 37.0065



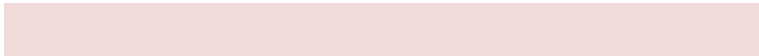
25.1161, 28.0347, 47.8038

Sweetspot

The Sweet Spot groups the original color and five complimentary colors.



31.9135, 28.0360, 24.8489



73.7135, 73.9586, 76.8072



36.3076, 29.5789, 48.6500



15.6098, 15.5339, 15.9937



88.6918, 93.3107, 101.6153



17.8044, 18.7317, 20.3988

Same Dimension

The Same Dimension uses a secret algorithm to generate beautiful new colors.



31.9135, 28.0360, 24.8489



53.9365, 45.1042, 37.2292



36.0063, 36.2218, 26.2132



9.0176, 9.0382, 9.3762



13.6548, 7.0859, 0.6480



0.4859, 0.2589, 0.0244

Inverse Universe

The Inverse Universe completely reimagines the original color for something new.



34.7904, 42.0718, 51.6344



59.9715, 74.5525, 93.4338



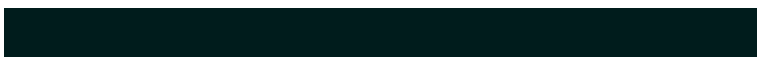
29.7631, 32.0172, 49.9586



9.2520, 10.1812, 11.5570



17.2979, 25.0555, 35.1776



0.6144, 0.8924, 1.2416

Previews

White Background



This preview shows how the XYZ color 31.9127, 28.0347, 24.8483 looks on a white background.

Color Contrast Check

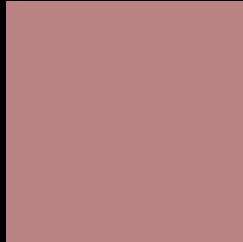
Large Text (above 18pt) WCAG AA ✓ Pass

Any Text WCAG AA ✗ Fail

Large Text (above 18pt) WCAG AAA ✗ Fail

Any Text WCAG AAA ✗ Fail

Black Background



This preview shows how the XYZ color 31.9127, 28.0347, 24.8483 looks on a black background.

Color Contrast Check

Large Text (above 18pt) WCAG AA ✓ Pass

Any Text WCAG AA ✓ Pass

Large Text (above 18pt) WCAG AAA ✓ Pass

Any Text WCAG AAA × Fail

If you want to check with other color combinations, try the [Color Contrast Checker](#).

XYZ 31.9127, 28.0347, 24.8483

Background



This preview shows how black text looks on a background with the XYZ color 31.9127, 28.0347, 24.8483.



This preview shows how white text looks on a background with the XYZ color 31.9127, 28.0347,

Color Blindness Simulation

Color vision deficiency is a very complex topic, and I could not describe the different causes any better than Wikipedia does, so if you want to learn more, you should check out their [article about color blindness](#).

Dichromacy



Original Color

31.9127, 28.0347, 24.8483

Protanopia

26.8830, 28.1422, 27.6820

Deuteranopia

28.6460, 28.0231, 24.3213



Tritanopia

32.6504, 28.1436, 28.1375

Trichromacy



Original Color

31.9127, 28.0347, 24.8483

Protanomaly

28.4360, 27.8679, 26.4346

Deuteranomaly

29.7799, 27.9640, 24.5969

Tritanomaly

32.4341, 28.0571, 26.9987

Monochromacy



Original Color

31.9127, 28.0347, 24.8483

Achromatopsia

27.7328, 29.1771, 31.7738

Achromatomaly

28.8298, 28.4464, 29.1705

CSS Examples

Text

The CSS property to change the color of the text to XYZ 31.9127, 28.0347, 24.8483 is called "color". The color property can be set on classes, ids or directly on the HTML element.

This example shows how text in the color `rgb(184, 131, 130)` looks like.

```
.text, #text, p{  
    color:rgb(184, 131, 130)  
}
```

If you want to add a text shadow in that color use the text-shadow property, you can generate a text shadow directly with our [CSS Text Shadow Generator](#).

Here you see how black text with a 4 pixel rgb(184, 131, 130) colored shadow looks like.

```
.shadow{ text-shadow: 4px 4px 2px rgb(184, 131, 130) }
```

Border

The CSS property to change the border of an element to XYZ 31.9127, 28.0347, 24.8483 is called "border". The border property can be set on classes, ids or directly on the HTML element.

This example shows the color as border, it can be applied via the CSS property "border" or "border-color".

```
.border, #border, table{ border:4px solid rgb(184, 131, 130) }
```


If only the border color should be changed use the property `border-color`.

```
.border{ border-color:rgb(184, 131, 130) }
```

If you want to add a box shadow in that color use:

Here you see how a box with a 4 pixel `rgb(184, 131, 130)` colored shadow looks like.

```
.boxshadow{ -moz-box-shadow:4px 4px 4px  
4px rgb(184, 131, 130); -webkit-box-  
shadow:4px 4px 4px 4px rgb(184, 131, 130);  
box-shadow:4px 4px 4px 4px rgb(184, 131,  
130) }
```

Background

The CSS property to change the background color of an element to XYZ 31.9127, 28.0347, 24.8483 is called "background". The background property can be set on classes, ids or directly on the HTML element.

```
.background, #background, body{  
background: rgb(184, 131, 130) }
```

If only the background color should be changed can be used:

```
.background{ background-color: rgb(184,  
131, 130) }
```

This example shows the color as background, it is applied via the CSS property "background".

To optimize and compress your CSS code, you can use our [online CSS compressor and optimizer](#) based on csstidy. If you want to create a linear or radial gradient as background or border, check our [CSS Gradient Generator](#).

Hey! You found this booklet interesting? Support Converting Colors with the new Membership Option!

The pro membership hides all ads, plus gives you double the colors in the color bucket, and more awesome pro features!

[Learn more, Memberships starting at \\$2.50/m!](#)

**Follow me
on Twitter!**

@ConvertingColor