

Converting Colors

XYZ(32.0500, 28.6887, 26.0387)

Have a look what the booklet for
XYZ(32.0500, 28.6887, 26.0387)
contains.

XYZ(32.0501, 28.6887, 26.0386)	3
<i>Conversions</i>	4
<i>Details</i>	6
<i>Harmonies</i>	12
<i>Previews</i>	24
<i>Color Blindness Simulation</i>	28
<i>CSS Examples</i>	31

Color

**XYZ(32.0501, 28.6887,
26.0386)**

Conversions

Conversions Part 1

Format	Color
Hex	B68685
RGB	182, 134, 133
RGB Percent	71%, 53%, 52%
CMY	0.2863, 0.4745, 0.4784
CMYK	0.00, 0.26, 0.27, 0.29
HSL	1°, 25%, 62%
HSV	1°, 27%, 71%
XYZ	32.0501, 28.6887, 26.0386
YIQ	148.2380, 28.9290, 9.8650

Conversions

Conversions Part 2

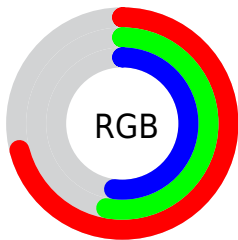
Format	Color
RYB	182, 134, 133
Decimal	11961989
CIELab	60.51, 18.25, 7.77
CIELCh	61, 19.834, 23.050
Yxy	28.6887, 0.3693, 0.3306
Android (android.graphics.Color)	4290152069 (0xFFB68685)
YUV	148.2380, -7.5123, 29.6093
Hunter-Lab	53.5618, 13.0769, 8.6700

Details

The XYZ color **32.0501, 28.6887, 26.0386** is a light color, and the websafe version is hex **CC9999**. A complement of this color would be **34.6398, 41.4104, 50.4233**, and the grayscale version is **28.2702, 29.7425, 32.3895**.

A 20% lighter version of the original color is **62.2299, 57.4365, 54.2609**, and **13.6726, 11.5699, 9.9001** is the 20% darker color. If you saturate the color by 10%, you get **28.6404, 23.7100, 19.2267**, and if you desaturate by 10%, it is **36.0947, 34.5879, 34.1376**.

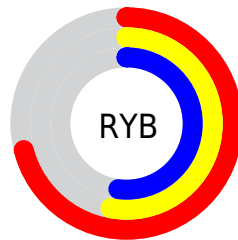
Distribution



Red (71%)

Green (53%)

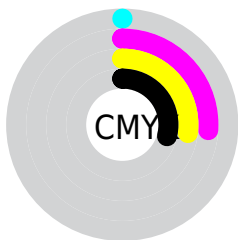
Blue (52%)



Red (71%)

Yellow (53%)

Blue (52%)

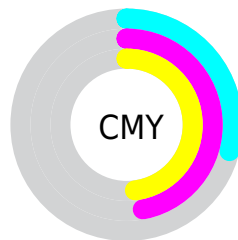


Cyan (0%)

Magenta (26%)

Yellow (27%)

Black (29%)



Cyan (29%)


Magenta (47%)


Yellow (48%)

Brightness & Saturation Gradients


These gradients show how the XYZ color 32.0501, 28.6887, 26.0386 changes by changing the brightness by 10 percent. The first figure shows a shift by +10% for each color and the second figure -10%.


Similar to the brightness gradients but the following saturation gradients show a change of the XYZ color 32.0501, 28.6887, 26.0386 by changing the saturation by 10% instead.


 32.0501, 28.6887,
26.0386


 32.0501, 28.6887,
26.0386


303.0886,
295.7433, 296.5830


 21.5555, 18.8455,
16.6265


 62.2543, 57.5821,
54.3221

 13.6454, 11.5587,
9.8094


 82.6946, 77.4011,
74.0305

 7.9545, 6.4439,
5.1688


 107.1808,
101.3141, 98.0081

 4.1174, 3.1168,
2.2862

136.0784,
129.7055, 126.6735

 1.7688, 1.1930,
0.7235

169.7526,
162.9597, 160.4451

 0.4987, 0.0560,
0.0000

208.5688,

 0.0000, 0.0000,

201.4612, 199.7415

0.0000

252.8923,
245.5943, 244.9813

■ 32.0501, 28.6887,
26.0386

■ 32.0501, 28.6887,
26.0386

■ 28.6404, 23.7100,
19.2267

■ 36.0947, 34.5879,
34.1376

■ 25.8310, 19.6017,
13.6341

■ 40.8015, 41.4466,
43.5834

■ 23.5881, 16.3151,
9.1893

■ 46.1993, 49.3062,
54.4339

■ 21.8730, 13.7948,
5.8127

■ 52.3143, 58.2046,
66.7433

■ 20.6427, 11.9790,
3.4148

■ 59.1715, 68.1778,
80.5628

■ 19.8471, 10.7960,
1.8911

■ 66.7946, 79.2599,
95.9412

■ 19.4221, 10.1574,
1.0978

■ 73.1014, 88.6851,
107.8728

■ 19.3319, 10.0260,
0.9163

Harmonies

Analogous

The Analogous color harmony consists of three colors that are next to each other on the color wheel.



32.4490, 28.6887, 32.9733



32.0501, 28.6887, 26.0386



30.3334, 28.6887, 21.2755

Triad

The Triadic color harmony groups three colors that are evenly spaced from another and form a triangle on the color wheel.



32.0501, 28.6887, 26.0386



23.5218, 28.6887, 23.5096



26.6768, 28.6887, 47.4155

Complementary

The Complementary color scheme is a pair of colors which are on the opposite of each other on the color wheel.



32.0501, 28.6887, 26.0386



34.6398, 41.4104, 50.4233

Split Complementary

Split-complementary colors differ from the complementary color scheme. The scheme consists of three colors, the original color and two neighbors of the complement color.



24.4159, 28.6887, 43.9050



32.0501, 28.6887, 26.0386



22.6697, 28.6887, 29.5630

Square

The Square scheme is like the rectangle color scheme, but the four colors are evenly spaced on the color wheel.



32.0501, 28.6887, 26.0386



25.3864, 28.6887, 19.9827



22.9865, 28.6887, 37.0852



29.2398, 28.6887, 46.0792

Rectangle

The Rectangle color scheme consists of four colors that form a rectangle on the color wheel.



32.0501, 28.6887, 26.0386



28.7274, 28.6887, 19.6044



22.9865, 28.6887, 37.0852



25.8584, 28.6887, 46.7470

Sweetspot

The Sweet Spot groups the original color and five complimentary colors.



32.0509, 28.6900, 26.0392



72.8719, 73.5388, 76.8055



36.0384, 30.0642, 47.7184



15.7987, 15.8106, 16.3688



88.6918, 93.3107, 101.6153



17.8044, 18.7317, 20.3988

Same Dimension

The Same Dimension uses a secret algorithm to generate beautiful new colors.



32.0509, 28.6900, 26.0392



54.4959, 46.7419, 39.9893



35.8062, 36.2007, 27.2910



9.0190, 9.0409, 9.3766



13.6579, 7.0923, 0.6491



0.4865, 0.2601, 0.0246

Inverse Universe

The Inverse Universe completely reimagines the original color for something new.



34.6398, 41.4104, 50.4233



59.9380, 73.4860, 91.2609



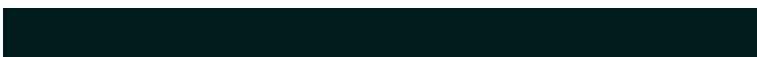
30.1201, 32.3712, 48.9168



9.2505, 10.1782, 11.5565



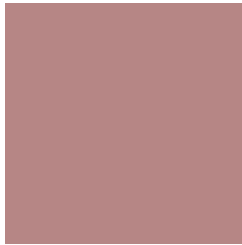
17.2502, 24.9601, 35.1617



0.6131, 0.8899, 1.2412

Previews

White Background



This preview shows how the XYZ color 32.0501, 28.6887, 26.0386 looks on a white background.

Color Contrast Check

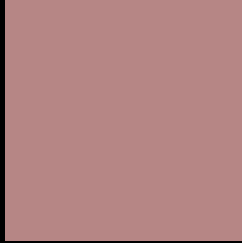
Large Text (above 18pt) WCAG AA ✓ Pass

Any Text WCAG AA × Fail

Large Text (above 18pt) WCAG AAA × Fail

Any Text WCAG AAA × Fail

Black Background



This preview shows how the XYZ color 32.0501, 28.6887, 26.0386 looks on a black background.

Color Contrast Check

Large Text (above 18pt) WCAG AA ✓ Pass

Any Text WCAG AA ✓ Pass

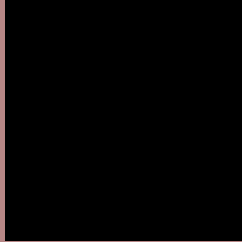
Large Text (above 18pt) WCAG AAA ✓ Pass

Any Text WCAG AAA × Fail

If you want to check with other color combinations, try the [Color Contrast Checker](#).

XYZ 32.0501, 28.6887, 26.0386

Background



This preview shows how black text looks on a background with the XYZ color 32.0501, 28.6887, 26.0386.



This preview shows how white text looks on a background with the XYZ color 32.0501, 28.6887,

Color Blindness Simulation

Color vision deficiency is a very complex topic, and I could not describe the different causes any better than Wikipedia does, so if you want to learn more, you should check out their [article about color blindness](#).

Dichromacy



Original Color

32.0501, 28.6887, 26.0386

Protanopia

27.5168, 28.9059, 28.5552

Deuteranopia

29.4156, 28.8227, 25.8428



Tritanopia

32.8739, 28.8255, 29.8178

Trichromacy



Original Color

32.0501, 28.6887, 26.0386

Protanomaly

29.0886, 28.8335, 27.6992

Deuteranomaly

30.2666, 28.6136, 25.7575

Tritanomaly

32.5762, 28.7064, 28.2500

Monochromacy



Original Color

32.0501, 28.6887, 26.0386

Achromatopsia

28.1479, 29.6138, 32.2495

Achromatomaly

29.2776, 29.1017, 30.0607

CSS Examples

Text

The CSS property to change the color of the text to XYZ 32.0501, 28.6887, 26.0386 is called "color". The color property can be set on classes, ids or directly on the HTML element.

This example shows how text in the color `rgb(182, 134, 133)` looks like.

```
.text, #text, p{  
    color:rgb(182, 134, 133)  
}
```

If you want to add a text shadow in that color use the text-shadow property, you can generate a text shadow directly with our [CSS Text Shadow Generator](#).

Here you see how black text with a 4 pixel rgb(182, 134, 133) colored shadow looks like.

```
.shadow{ text-shadow: 4px 4px 2px rgb(182, 134, 133) }
```

Border

The CSS property to change the border of an element to XYZ 32.0501, 28.6887, 26.0386 is called "border". The border property can be set on classes, ids or directly on the HTML element.

This example shows the color as border, it can be applied via the CSS property "border" or "border-color".

```
.border, #border, table{ border:4px solid rgb(182, 134, 133) }
```


If only the border color should be changed use the property `border-color`.

```
.border{ border-color:rgb(182, 134, 133) }
```

If you want to add a box shadow in that color use:

Here you see how a box with a 4 pixel `rgb(182, 134, 133)` colored shadow looks like.

```
.boxshadow{ -moz-box-shadow:4px 4px 4px  
4px rgb(182, 134, 133); -webkit-box-  
shadow:4px 4px 4px 4px rgb(182, 134, 133);  
box-shadow:4px 4px 4px 4px rgb(182, 134,  
133) }
```

Background

The CSS property to change the background color of an element to XYZ 32.0501, 28.6887, 26.0386 is called "background". The background property can be set on classes, ids or directly on the HTML element.

```
.background, #background, body{  
background: rgb(182, 134, 133) }
```

If only the background color should be changed can be used:

```
.background{ background-color: rgb(182,  
134, 133) }
```

This example shows the color as background, it is applied via the CSS property "background".

To optimize and compress your CSS code, you can use our [online CSS compressor and optimizer](#) based on csstidy. If you want to create a linear or radial gradient as background or border, check our [CSS Gradient Generator](#).

Hey! You found this booklet interesting? Support Converting Colors with the new Membership Option!

The pro membership hides all ads, plus gives you double the colors in the color bucket, and more awesome pro features!

[Learn more, Memberships starting at \\$2.50/m!](#)

**Follow me
on Twitter!**

@ConvertingColor