

Converting Colors

XYZ(32.0701, 32.3347, 27.6893)

Have a look what the booklet for
XYZ(32.0701, 32.3347, 27.6893)
contains.

XYZ(32.0881, 32.4568, 27.8661)	3
<i>Conversions</i>	4
<i>Details</i>	6
<i>Harmonies</i>	12
<i>Previews</i>	24
<i>Color Blindness Simulation</i>	28
<i>CSS Examples</i>	31

Color

**XYZ(32.0881, 32.4568,
27.8661)**

Conversions

Conversions Part 1

Format	Color
Hex	AA9788
RGB	170, 151, 136
RGB Percent	67%, 59%, 53%
CMY	0.3333, 0.4078, 0.4667
CMYK	0.00, 0.11, 0.20, 0.33
HSL	26°, 17%, 60%
HSV	26°, 20%, 67%
XYZ	32.0881, 32.4568, 27.8661
YIQ	154.9710, 16.1390, -0.6370

Conversions

Conversions Part 2

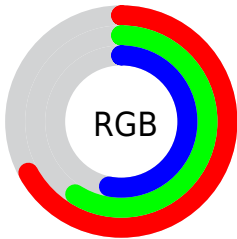
Format	Color
RYB	170, 163, 136
Decimal	11179912
CIELab	63.72, 4.54, 10.47
CIELCh	64, 11.408, 66.551
Yxy	32.4568, 0.3472, 0.3512
Android (android.graphics.Color)	4289369992 (0xFFAA9788)
YUV	154.9710, -9.3527, 13.1804
Hunter-Lab	56.9709, 0.8388, 10.8792

Details

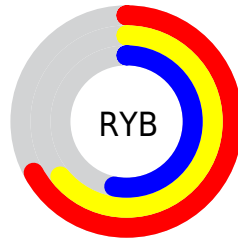
The XYZ color **32.0881, 32.4568, 27.8661** is a light color, and the websafe version is hex **999999**. A complement of this color would be **29.1302, 31.5785, 42.5904**, and the grayscale version is **31.1786, 32.8024, 35.7218**.

A 20% lighter version of the original color is **62.3807, 63.5055, 57.1141**, and **13.5730, 13.5681, 10.7076** is the 20% darker color. If you saturate the color by 10%, you get **29.5071, 29.0773, 21.5104**, and if you desaturate by 10%, it is **34.9857, 36.1623, 35.2736**.

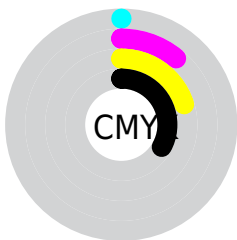
Distribution



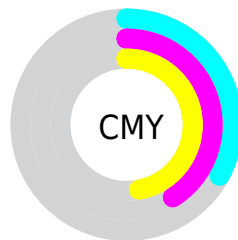
- Red (67%)
- Green (59%)
- Blue (53%)



- Red (67%)
- Yellow (64%)
- Blue (53%)



- Cyan (0%)
- Magenta (11%)
- Yellow (20%)
- Black (33%)



- Cyan (33%)
- Magenta (41%)
- Yellow (47%)

Brightness & Saturation Gradients

These gradients show how the XYZ color 32.0881, 32.4568, 27.8661 changes by changing the brightness by 10 percent. The first figure shows a shift by +10% for each color and the second figure -10%.

Similar to the brightness gradients but the following saturation gradients show a change of the XYZ color 32.0881, 32.4568, 27.8661 by changing the saturation by 10% instead.

■ 32.0881, 32.4568,
27.8661

■ 32.0881, 32.4568,
27.8661

303.2585,
313.1949, 305.7183

■ 21.5847, 21.7106,
17.9866

■ 62.3134, 63.5265,
57.2911

■ 13.6669, 13.6444,
10.7710

■ 82.7661, 84.6189,
77.6737

■ 7.9695, 7.8738,
5.8008

■ 107.2658,
109.9288, 102.3944

■ 4.1271, 4.0143,
2.6575

136.1780,
139.8406, 131.8717

■ 1.7743, 1.6816,
0.9219

169.8680,
174.7387, 166.5242

■ 0.5021, 0.4117,
0.0000

208.7012,

■ 0.0000, 0.0000,

215.0075, 206.7705

0.0000

253.0429,
261.0315, 253.0290

■ 32.0881, 32.4568,
27.8661

■ 32.0881, 32.4568,
27.8661

■ 29.5071, 29.0773,
21.5104

■ 34.9857, 36.1623,
35.2736

■ 27.2283, 26.0099,
16.1560

■ 38.2084, 40.1982,
43.7761

■ 25.2396, 23.2464,
11.7513

■ 41.7678, 44.5748,
53.4168

■ 23.5274, 20.7761,
8.2391

■ 45.6740, 49.3000,
64.2362

■ 22.0766, 18.5878,
5.5563

■ 49.9367, 54.3820,
76.2724

■ 20.8703, 16.6694,
3.6310

■ 54.5651, 59.8284,
89.5622

■ 19.8893, 15.0075,
2.3788

■ 59.5678, 65.6464,
104.1392

■ 19.0949, 13.5805,
1.6149

■ 62.0944, 70.6996,
104.9814

■ 19.0949, 13.5805,
1.6149

■ 64.7644, 76.0395,
105.8714

Harmonies

Analogous

The Analogous color harmony consists of three colors that are next to each other on the color wheel.



33.3839, 32.4568, 30.3541



32.0881, 32.4568, 27.8661



30.5000, 32.4568, 27.2988

Triad

The Triadic color harmony groups three colors that are evenly spaced from another and form a triangle on the color wheel.



32.0881, 32.4568, 27.8661



27.8963, 32.4568, 36.3535



32.7155, 32.4568, 42.8907

Complementary

The Complementary color scheme is a pair of colors which are on the opposite of each other on the color wheel.



32.0881, 32.4568, 27.8661



29.1302, 31.5785, 42.5904

Split Complementary

Split-complementary colors differ from the complementary color scheme. The scheme consists of three colors, the original color and two neighbors of the complement color.



31.2011, 32.4568, 44.8228



32.0881, 32.4568, 27.8661



28.4462, 32.4568, 40.8438

Square

The Square scheme is like the rectangle color scheme, but the four colors are evenly spaced on the color wheel.



32.0881, 32.4568, 27.8661



28.1154, 32.4568, 31.9527



29.6426, 32.4568, 44.0432



33.7548, 32.4568, 38.9585

Rectangle

The Rectangle color scheme consists of four colors that form a rectangle on the color wheel.



32.0881, 32.4568, 27.8661



29.4960, 32.4568, 28.0383



29.6426, 32.4568, 44.0432



32.2431, 32.4568, 43.8104

Sweetspot

The Sweet Spot groups the original color and five complimentary colors.



32.0890, 32.4583, 27.8668



65.6811, 68.3889, 69.7614



31.3209, 28.5303, 34.9844



14.5666, 15.1499, 15.3455



82.5889, 86.8899, 94.6231



15.4596, 16.2647, 17.7123

Same Dimension

The Same Dimension uses a secret algorithm to generate beautiful new colors.



32.0890, 32.4583, 27.8668



56.0746, 56.0994, 45.2153



34.9753, 38.2308, 28.8289



7.7933, 8.0667, 7.9356



14.1002, 10.0976, 1.2059



0.3944, 0.3484, 0.0465

Inverse Universe

The Inverse Universe completely reimagines the original color for something new.



29.1302, 31.5785, 42.5904



49.7178, 54.2080, 76.8447



26.5362, 26.3905, 41.7258



7.4663, 7.9696, 9.5631



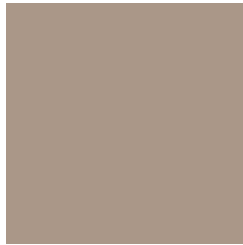
8.4029, 8.2659, 29.1281



0.2542, 0.3005, 0.7253

Previews

White Background



This preview shows how the XYZ color 32.0881, 32.4568, 27.8661 looks on a white background.

Color Contrast Check

Large Text (above 18pt) WCAG AA × Fail

Any Text WCAG AA × Fail

Large Text (above 18pt) WCAG AAA × Fail

Any Text WCAG AAA × Fail

Black Background



This preview shows how the XYZ color 32.0881, 32.4568, 27.8661 looks on a black background.

Color Contrast Check

Large Text (above 18pt) WCAG AA ✓ Pass

Any Text WCAG AA ✓ Pass

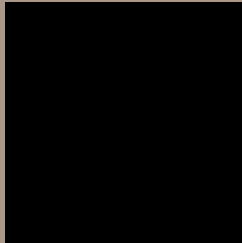
Large Text (above 18pt) WCAG AAA ✓ Pass

Any Text WCAG AAA ✓ Pass

If you want to check with other color combinations, try the [Color Contrast Checker](#).

XYZ 32.0881, 32.4568, 27.8661

Background



This preview shows how black text looks on a background with the XYZ color 32.0881, 32.4568, 27.8661.



This preview shows how white text looks on a background with the XYZ color 32.0881, 32.4568,

Color Blindness Simulation

Color vision deficiency is a very complex topic, and I could not describe the different causes any better than Wikipedia does, so if you want to learn more, you should check out their [article about color blindness](#).

Dichromacy



Original Color

32.0881, 32.4568, 27.8661

Protanopia

30.8410, 32.5232, 28.6969

Deuteranopia

33.0959, 32.5026, 27.8218



Tritanopia

34.0815, 32.5672, 37.2907

Trichromacy



Original Color

32.0881, 32.4568, 27.8661

Protanomaly

31.2164, 32.4811, 28.2911

Deuteranomaly

32.8058, 32.5889, 27.8538

Tritanomaly

33.3466, 32.4999, 33.7937

Monochromacy



Original Color

32.0881, 32.4568, 27.8661

Achromatopsia

31.1553, 32.7778, 35.6950

Achromatomaly

31.3981, 32.7229, 32.6783

CSS Examples

Text

The CSS property to change the color of the text to XYZ 32.0881, 32.4568, 27.8661 is called "color". The color property can be set on classes, ids or directly on the HTML element.

This example shows how text in the color `rgb(170, 151, 136)` looks like.

```
.text, #text, p{  
    color:rgb(170, 151, 136)  
}
```

If you want to add a text shadow in that color use the text-shadow property, you can generate a text shadow directly with our [CSS Text Shadow Generator](#).

Here you see how black text with a 4 pixel rgb(170, 151, 136) colored shadow looks like.

```
.shadow{ text-shadow: 4px 4px 2px rgb(170, 151, 136) }
```

Border

The CSS property to change the border of an element to XYZ 32.0881, 32.4568, 27.8661 is called "border". The border property can be set on classes, ids or directly on the HTML element.

This example shows the color as border, it can be applied via the CSS property "border" or "border-color".

```
.border, #border, table{ border:4px solid rgb(170, 151, 136) }
```


If only the border color should be changed use the property `border-color`.

```
.border{ border-color:rgb(170, 151, 136) }
```

If you want to add a box shadow in that color use:

Here you see how a box with a 4 pixel `rgb(170, 151, 136)` colored shadow looks like.

```
.boxshadow{ -moz-box-shadow:4px 4px 4px  
4px rgb(170, 151, 136); -webkit-box-  
shadow:4px 4px 4px 4px rgb(170, 151, 136);  
box-shadow:4px 4px 4px 4px rgb(170, 151,  
136) }
```

Background

The CSS property to change the background color of an element to XYZ 32.0881, 32.4568, 27.8661 is called "background". The background property can be set on classes, ids or directly on the HTML element.

```
.background, #background, body{  
background: rgb(170, 151, 136) }
```

If only the background color should be changed can be used:

```
.background{ background-color: rgb(170,  
151, 136) }
```

This example shows the color as background, it is applied via the CSS property "background".

To optimize and compress your CSS code, you can use our [online CSS compressor and optimizer](#) based on csstidy. If you want to create a linear or radial gradient as background or border, check our [CSS Gradient Generator](#).

Hey! You found this booklet interesting? Support Converting Colors with the new Membership Option!

The pro membership hides all ads, plus gives you double the colors in the color bucket, and more awesome pro features!

[Learn more, Memberships starting at \\$2.50/m!](#)

**Follow me
on Twitter!**

@ConvertingColor