

Converting Colors

XYZ(32.0706, 31.2574, 18.2529)

Have a look what the booklet for
XYZ(32.0706, 31.2574, 18.2529)
contains.

XYZ(32.0706, 31.2574, 18.2529)	3
<i>Conversions</i>	4
<i>Details</i>	6
<i>Harmonies</i>	12
<i>Previews</i>	24
<i>Color Blindness Simulation</i>	28
<i>CSS Examples</i>	31

Color

**XYZ(32.0706, 31.2574,
18.2529)**

Conversions

Conversions Part 1

Format	Color
Hex	B6916B
RGB	182, 145, 107
RGB Percent	71%, 57%, 42%
CMY	0.2863, 0.4314, 0.5804
CMYK	0.00, 0.20, 0.41, 0.29
HSL	30°, 34%, 57%
HSV	30°, 41%, 71%
XYZ	32.0706, 31.2574, 18.2529
YIQ	151.7310, 34.2500, -3.9740

Conversions

Conversions Part 2

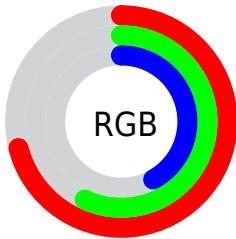
Format	Color
RYB	180, 182, 107
Decimal	11964779
CIELab	62.72, 8.76, 25.45
CIElCh	63, 26.920, 71.005
Yxy	31.2574, 0.3931, 0.3831
Android (android.graphics.Color)	4290154859 (0xFFB6916B)
YUV	151.7310, -22.0524, 26.5459
Hunter-Lab	55.9083, 4.5531, 19.7789

Details

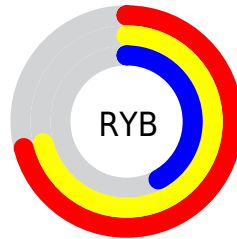
The XYZ color **32.0706, 31.2574, 18.2529** is a dark color, and the websafe version is hex **CC9966**. A complement of this color would be **24.4797, 26.4487, 48.0707**, and the grayscale version is **29.8114, 31.3639, 34.1553**.

A 20% lighter version of the original color is **62.2780, 61.7008, 41.4279**, and **13.6340, 13.0122, 5.9307** is the 20% darker color. If you saturate the color by 10%, you get **29.8942, 28.2790, 13.2903**, and if you desaturate by 10%, it is **34.5586, 34.5363, 24.3143**.

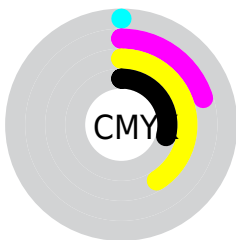
Distribution



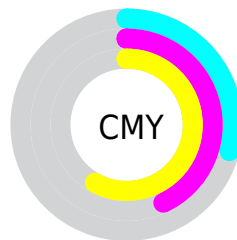
- Red (71%)
- Green (57%)
- Blue (42%)



- Red (71%)
- Yellow (71%)
- Blue (42%)



- Cyan (0%)
- Magenta (20%)
- Yellow (41%)
- Black (29%)



- Cyan (29%)
- Magenta (43%)
- Yellow (58%)

Brightness & Saturation Gradients

These gradients show how the XYZ color 32.0706, 31.2574, 18.2529 changes by changing the brightness by 10 percent. The first figure shows a shift by +10% for each color and the second figure -10%.

Similar to the brightness gradients but the following saturation gradients show a change of the XYZ color 32.0706, 31.2574, 18.2529 by changing the saturation by 10% instead.

■ 32.0706, 31.2574,
18.2529

■ 32.0706, 31.2574,
18.2529

303.1803,
307.7224, 254.5765

■ 21.5712, 20.7949,
10.9604

■ 62.2862, 61.6451,
41.2875

■ 13.6570, 12.9742,
5.9264

■ 82.7331, 82.3391,
57.8667

■ 7.9626, 7.4108,
2.7323

■ 107.2267,
107.2124, 78.3786

■ 4.1226, 3.7203,
0.9596

■ 136.1321,
136.6495, 103.2416

■ 1.7717, 1.5184,
0.0000

169.8148,
171.0346, 132.8744

■ 0.5006, 0.3016,
0.0000

208.6402,

■ 0.0000, 0.0000,

210.7522, 167.6954

0.0000

252.9736,
256.1866, 208.1233

■ 32.0706, 31.2574,
18.2529

■ 32.0706, 31.2574,
18.2529

■ 29.8942, 28.2790,
13.2903

■ 34.5586, 34.5363,
24.3143

■ 28.0117, 25.5864,
9.3567

■ 37.3698, 38.1206,
31.5347

■ 26.4072, 23.1704,
6.3770


■ 40.5182, 42.0208,
39.9722


■ 25.0617, 21.0191,
4.2649


■ 44.0160, 46.2455,
49.6804

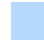
■ 23.9532, 19.1192,
2.9182

■ 47.8748, 50.8029,
60.7095

 23.1379, 17.6381,
2.1850

 52.1057, 55.7006,
73.1073

 56.7192, 60.9464,
86.9189

 61.7254, 66.5474,
102.1874

 64.4843, 71.4509,
105.0005

Harmonies

Analogous

The Analogous color harmony consists of three colors that are next to each other on the color wheel.



35.3710, 31.2574, 22.4014



32.0706, 31.2574, 18.2529



28.3798, 31.2574, 17.7750

Triad

The Triadic color harmony groups three colors that are evenly spaced from another and form a triangle on the color wheel.



32.0706, 31.2574, 18.2529



23.2950, 31.2574, 38.0478



34.5942, 31.2574, 51.7172

Complementary

The Complementary color scheme is a pair of colors which are on the opposite of each other on the color wheel.



32.0706, 31.2574, 18.2529



24.4797, 26.4487, 48.0707

Split Complementary

Split-complementary colors differ from the complementary color scheme. The scheme consists of three colors, the original color and two neighbors of the complement color.



31.0795, 31.2574, 58.0327



32.0706, 31.2574, 18.2529



24.6863, 31.2574, 49.1245

Square

The Square scheme is like the rectangle color scheme, but the four colors are evenly spaced on the color wheel.



32.0706, 31.2574, 18.2529



23.5125, 31.2574, 27.8592



27.4667, 31.2574, 56.9966



36.9090, 31.2574, 41.0598

Rectangle

The Rectangle color scheme consists of four colors that form a rectangle on the color wheel.



32.0706, 31.2574, 18.2529



26.2138, 31.2574, 19.4606



27.4667, 31.2574, 56.9966



33.5023, 31.2574, 54.5086

Sweetspot

The Sweet Spot groups the original color and five complimentary colors.



32.0714, 31.2589, 18.2535



72.8634, 75.4540, 70.8456



29.6216, 22.4897, 29.3663



15.9239, 16.4575, 15.1880



88.6918, 93.3107, 101.6153



17.8044, 18.7317, 20.3988

Same Dimension

The Same Dimension uses a secret algorithm to generate beautiful new colors.



32.0714, 31.2589, 18.2535



54.7099, 51.9832, 25.2222



38.6731, 44.4624, 20.4541



9.3706, 9.7442, 9.4938



16.4064, 12.5893, 1.5653



0.6402, 0.5674, 0.0758

Inverse Universe

The Inverse Universe completely reimagines the original color for something new.



24.4797, 26.4487, 48.0707



39.1592, 42.1314, 86.3040



19.7649, 17.0190, 46.4991



8.8771, 9.4314, 11.4320



8.5977, 7.6550, 32.2775



0.3650, 0.3938, 1.1585

Previews

White Background



This preview shows how the XYZ color 32.0706, 31.2574, 18.2529 looks on a white background.

Color Contrast Check

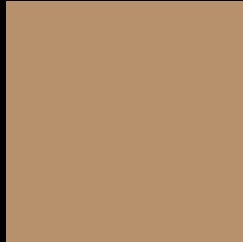
Large Text (above 18pt) WCAG AA × Fail

Any Text WCAG AA × Fail

Large Text (above 18pt) WCAG AAA × Fail

Any Text WCAG AAA × Fail

Black Background



This preview shows how the XYZ color 32.0706, 31.2574, 18.2529 looks on a black background.

Color Contrast Check

Large Text (above 18pt) WCAG AA ✓ Pass

Any Text WCAG AA ✓ Pass

Large Text (above 18pt) WCAG AAA ✓ Pass

Any Text WCAG AAA ✓ Pass

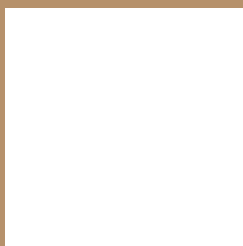
If you want to check with other color combinations, try the [Color Contrast Checker](#).

XYZ 32.0706, 31.2574, 18.2529

Background



This preview shows how black text looks on a background with the XYZ color 32.0706, 31.2574, 18.2529.



This preview shows how white text looks on a background with the XYZ color 32.0706, 31.2574,

Color Blindness Simulation

Color vision deficiency is a very complex topic, and I could not describe the different causes any better than Wikipedia does, so if you want to learn more, you should check out their [article about color blindness](#).

Dichromacy



Original Color

32.0706, 31.2574, 18.2529

Protanopia

29.1470, 31.3688, 19.2704

Deuteranopia

31.8353, 31.1361, 18.2419



Tritanopia

34.9873, 31.1063, 33.0143

Trichromacy



Original Color

32.0706, 31.2574, 18.2529

Protanomaly

30.0853, 31.1451, 18.8939

Deuteranomaly

31.8353, 31.1361, 18.2419

Tritanomaly

33.8355, 31.0853, 26.7710

Monochromacy



Original Color

32.0706, 31.2574, 18.2529

Achromatopsia

29.8446, 31.3989, 34.1934

Achromatomaly

30.2956, 31.0590, 27.6908

CSS Examples

Text

The CSS property to change the color of the text to XYZ 32.0706, 31.2574, 18.2529 is called "color". The color property can be set on classes, ids or directly on the HTML element.

This example shows how text in the color `rgb(182, 145, 107)` looks like.

```
.text, #text, p{  
    color:rgb(182, 145, 107)  
}
```

If you want to add a text shadow in that color use the text-shadow property, you can generate a text shadow directly with our [CSS Text Shadow Generator](#).

Here you see how black text with a 4 pixel rgb(182, 145, 107) colored shadow looks like.

```
.shadow{ text-shadow: 4px 4px 2px rgb(182, 145, 107) }
```

Border

The CSS property to change the border of an element to XYZ 32.0706, 31.2574, 18.2529 is called "border". The border property can be set on classes, ids or directly on the HTML element.

This example shows the color as border, it can be applied via the CSS property "border" or "border-color".

```
.border, #border, table{ border:4px solid rgb(182, 145, 107) }
```


If only the border color should be changed use the property `border-color`.

```
.border{ border-color:rgb(182, 145, 107) }
```

If you want to add a box shadow in that color use:

Here you see how a box with a 4 pixel `rgb(182, 145, 107)` colored shadow looks like.

```
.boxshadow{ -moz-box-shadow:4px 4px 4px  
4px rgb(182, 145, 107); -webkit-box-  
shadow:4px 4px 4px 4px rgb(182, 145, 107);  
box-shadow:4px 4px 4px 4px rgb(182, 145,  
107) }
```

Background

The CSS property to change the background color of an element to XYZ 32.0706, 31.2574, 18.2529 is called "background". The background property can be set on classes, ids or directly on the HTML element.

```
.background, #background, body{  
background: rgb(182, 145, 107) }
```

If only the background color should be changed can be used:

```
.background{ background-color: rgb(182,  
145, 107) }
```

This example shows the color as background, it is applied via the CSS property "background".

To optimize and compress your CSS code, you can use our [online CSS compressor and optimizer](#) based on csstidy. If you want to create a linear or radial gradient as background or border, check our [CSS Gradient Generator](#).

Hey! You found this booklet interesting? Support Converting Colors with the new Membership Option!

The pro membership hides all ads, plus gives you double the colors in the color bucket, and more awesome pro features!

[Learn more, Memberships starting at \\$2.50/m!](#)

**Follow me
on Twitter!**

@ConvertingColor