

Converting Colors

XYZ(32.0897, 31.2993, 37.6091)

Have a look what the booklet for
XYZ(32.0897, 31.2993, 37.6091)
contains.

XYZ(32.0887, 31.2980, 37.6076)	3
<i>Conversions</i>	4
<i>Details</i>	6
<i>Harmonies</i>	12
<i>Previews</i>	24
<i>Color Blindness Simulation</i>	28
<i>CSS Examples</i>	31

Color

**XYZ(32.0887, 31.2980,
37.6076)**

Conversions

Conversions Part 1

Format	Color
Hex	A493A0
RGB	164, 147, 160
RGB Percent	64%, 58%, 63%
CMY	0.3569, 0.4235, 0.3725
CMYK	0.00, 0.10, 0.02, 0.36
HSL	314°, 9%, 61%
HSV	314°, 10%, 64%
XYZ	32.0887, 31.2980, 37.6076
YIQ	153.5650, 5.9590, 7.6470

Conversions

Conversions Part 2

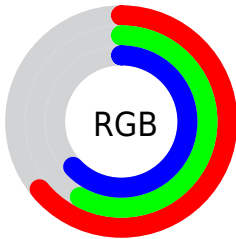
Format	Color
RYB	164, 147, 160
Decimal	10785696
CIELab	62.76, 8.68, -4.53
CIELCh	63, 9.794, 332.418
Yxy	31.2980, 0.3177, 0.3099
Android (android.graphics.Color)	4288975776 (0xFFA493A0)
YUV	153.5650, 3.1725, 9.1515
Hunter-Lab	55.9446, 4.4809, -0.6952

Details

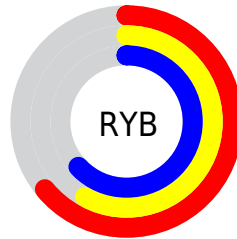
The XYZ color **32.0887, 31.2980, 37.6076** is a light color, and the websafe version is hex **999999**. A complement of this color would be **30.8952, 34.9891, 34.4050**, and the grayscale version is **30.5101, 32.0990, 34.9559**.

A 20% lighter version of the original color is **62.3658, 61.7397, 72.9199**, and **13.6253, 12.9146, 16.2426** is the 20% darker color. If you saturate the color by 10%, you get **29.3860, 26.4241, 35.0670**, and if you desaturate by 10%, it is **35.1673, 36.9060, 40.3260**.

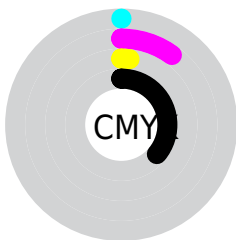
Distribution



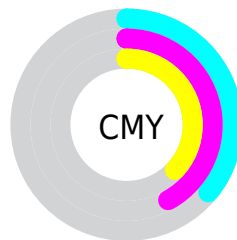
- Red (64%)
- Green (58%)
- Blue (63%)



- Red (64%)
- Yellow (58%)
- Blue (63%)



- Cyan (0%)
- Magenta (10%)
- Yellow (2%)
- Black (36%)



- Cyan (36%)
- Magenta (42%)
- Yellow (37%)

Brightness & Saturation Gradients

These gradients show how the XYZ color 32.0887, 31.2980, 37.6076 changes by changing the brightness by 10 percent. The first figure shows a shift by +10% for each color and the second figure -10%.

Similar to the brightness gradients but the following saturation gradients show a change of the XYZ color 32.0887, 31.2980, 37.6076 by changing the saturation by 10% instead.

■ 32.0887, 31.2980,
37.6076

■ 32.0887, 31.2980,
37.6076

303.2612,
307.9089, 351.1813

■ 21.5851, 20.8259,
25.3788

■ 62.3144, 61.7089,
72.7030

■ 13.6673, 12.9968,
16.1379

■ 82.7672, 82.4165,
96.4068

■ 7.9698, 7.4263,
9.4664

107.2671,
107.3048, 124.7725

■ 4.1272, 3.7301,
4.9457

136.1796,
136.7580, 158.2189

■ 1.7744, 1.5238,
2.1572

169.8698,
171.1606, 197.1644

■ 0.5022, 0.3054,
0.6495

208.7033,

■ 0.0000, 0.0000,

210.8970, 242.0276

0.0000

253.0453,
256.3517, 293.2271

■ 32.0887, 31.2980,
37.6076

■ 32.0887, 31.2980,
37.6076

■ 29.3860, 26.4241,
35.0670

■ 35.1673, 36.9060,
40.3260

■ 27.0410, 22.2495,
32.6965

■ 38.6335, 43.2728,
43.2253

■ 25.0382, 18.7428,
30.4909

■ 42.5021, 50.4270,
46.3114

■ 23.3598, 15.8685,
28.4438

■ 46.7859, 58.3947,
49.5890

■ 21.9863, 13.5879,
26.5481

■ 51.4974, 67.2004,
53.0627

■ 20.8961, 11.8579,
24.7961

■ 56.6485, 76.8678,
56.7368

■ 20.0647, 10.6297,
23.1793

■ 60.0414, 83.0012,
59.8792

■ 19.4633, 9.8457,
21.6875

■ 60.4603, 83.1687,
62.0851

■ 19.0378, 9.3837,
20.3466

■ 60.8904, 83.3408,
64.3500

Harmonies

Analogous

The Analogous color harmony consists of three colors that are next to each other on the color wheel.



31.1495, 31.2980, 40.6894



32.0887, 31.2980, 37.6076



32.3950, 31.2980, 33.7681

Triad

The Triadic color harmony groups three colors that are evenly spaced from another and form a triangle on the color wheel.



32.0887, 31.2980, 37.6076



29.6393, 31.2980, 27.2293



27.6269, 31.2980, 38.1859

Complementary

The Complementary color scheme is a pair of colors which are on the opposite of each other on the color wheel.



32.0887, 31.2980, 37.6076



30.8952, 34.9891, 34.4050

Split Complementary

Split-complementary colors differ from the complementary color scheme. The scheme consists of three colors, the original color and two neighbors of the complement color.



27.2489, 31.2980, 34.3902



32.0887, 31.2980, 37.6076



28.3888, 31.2980, 28.2250

Square

The Square scheme is like the rectangle color scheme, but the four colors are evenly spaced on the color wheel.



32.0887, 31.2980, 37.6076



30.9559, 31.2980, 27.9515



27.5236, 31.2980, 30.7768



28.5716, 31.2980, 41.0405

Rectangle

The Rectangle color scheme consists of four colors that form a rectangle on the color wheel.



32.0887, 31.2980, 37.6076



32.1919, 31.2980, 31.3428



27.5236, 31.2980, 30.7768



27.4306, 31.2980, 36.9683

Sweetspot

The Sweet Spot groups the original color and five complimentary colors.



32.0896, 31.2994, 37.6083



62.2614, 64.1161, 71.8374



29.8922, 30.1254, 39.3617



13.5137, 13.8385, 15.6196



78.6606, 82.7571, 90.1225



14.0027, 14.7319, 16.0430

Same Dimension

The Same Dimension uses a secret algorithm to generate beautiful new colors.



32.0896, 31.2994, 37.6083



57.2831, 55.0665, 67.3819



31.3739, 31.0131, 33.8396



7.2927, 7.1735, 8.5278



14.6161, 7.2025, 15.7009



0.3236, 0.1579, 0.4165

Inverse Universe

The Inverse Universe completely reimagines the original color for something new.



32.0896, 31.2994, 37.6083



57.2831, 55.0665, 67.3819



31.6077, 35.2741, 38.1571



7.2927, 7.1735, 8.5278



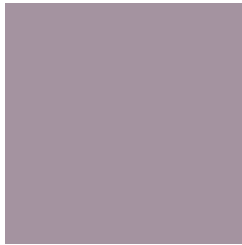
14.6161, 7.2025, 15.7009



0.3236, 0.1579, 0.4165

Previews

White Background



This preview shows how the XYZ color 32.0887, 31.2980, 37.6076 looks on a white background.

Color Contrast Check

Large Text (above 18pt) WCAG AA × Fail

Any Text WCAG AA × Fail

Large Text (above 18pt) WCAG AAA × Fail

Any Text WCAG AAA × Fail

Black Background



This preview shows how the XYZ color 32.0887, 31.2980, 37.6076 looks on a black background.

Color Contrast Check

Large Text (above 18pt) WCAG AA ✓ Pass

Any Text WCAG AA ✓ Pass

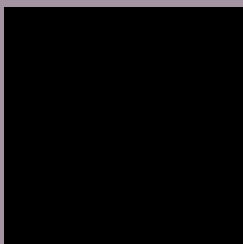
Large Text (above 18pt) WCAG AAA ✓ Pass

Any Text WCAG AAA ✓ Pass

If you want to check with other color combinations, try the [Color Contrast Checker](#).

XYZ 32.0887, 31.2980, 37.6076

Background



This preview shows how black text looks on a background with the XYZ color 32.0887, 31.2980, 37.6076.



This preview shows how white text looks on a background with the XYZ color 32.0887, 31.2980,

Color Blindness Simulation

Color vision deficiency is a very complex topic, and I could not describe the different causes any better than Wikipedia does, so if you want to learn more, you should check out their [article about color blindness](#).

Dichromacy



Original Color

32.0887, 31.2980, 37.6076

Protanopia

30.5371, 31.4173, 38.6371

Deuteranopia

31.8831, 31.1920, 37.5979



Tritanopia

32.0016, 31.2632, 37.1486

Trichromacy



Original Color

32.0887, 31.2980, 37.6076

Protanomaly

31.0497, 31.4538, 38.1529

Deuteranomaly

31.8831, 31.1920, 37.5979

Tritanomaly

32.0016, 31.2632, 37.1486

Monochromacy



Original Color

32.0887, 31.2980, 37.6076

Achromatopsia

30.7148, 32.3143, 35.1903

Achromatomaly

31.1679, 31.8026, 35.9483

CSS Examples

Text

The CSS property to change the color of the text to XYZ 32.0887, 31.2980, 37.6076 is called "color". The color property can be set on classes, ids or directly on the HTML element.

This example shows how text in the color `rgb(164, 147, 160)` looks like.

```
.text, #text, p{  
    color:rgb(164, 147, 160)  
}
```

If you want to add a text shadow in that color use the text-shadow property, you can generate a text shadow directly with our [CSS Text Shadow Generator](#).

Here you see how black text with a 4 pixel rgb(164, 147, 160) colored shadow looks like.

```
.shadow{ text-shadow: 4px 4px 2px rgb(164, 147, 160) }
```

Border

The CSS property to change the border of an element to XYZ 32.0887, 31.2980, 37.6076 is called "border". The border property can be set on classes, ids or directly on the HTML element.

This example shows the color as border, it can be applied via the CSS property "border" or "border-color".

```
.border, #border, table{ border:4px solid rgb(164, 147, 160) }
```


If only the border color should be changed use the property `border-color`.

```
.border{ border-color:rgb(164, 147, 160) }
```

If you want to add a box shadow in that color use:

Here you see how a box with a 4 pixel `rgb(164, 147, 160)` colored shadow looks like.

```
.boxshadow{ -moz-box-shadow:4px 4px 4px  
4px rgb(164, 147, 160); -webkit-box-  
shadow:4px 4px 4px 4px rgb(164, 147, 160);  
box-shadow:4px 4px 4px 4px rgb(164, 147,  
160) }
```

Background

The CSS property to change the background color of an element to XYZ 32.0887, 31.2980, 37.6076 is called "background". The background property can be set on classes, ids or directly on the HTML element.

```
.background, #background, body{  
background: rgb(164, 147, 160) }
```

If only the background color should be changed can be used:

```
.background{ background-color: rgb(164,  
147, 160) }
```

This example shows the color as background, it is applied via the CSS property "background".

To optimize and compress your CSS code, you can use our [online CSS compressor and optimizer](#) based on csstidy. If you want to create a linear or radial gradient as background or border, check our [CSS Gradient Generator](#).

Hey! You found this booklet interesting? Support Converting Colors with the new Membership Option!

The pro membership hides all ads, plus gives you double the colors in the color bucket, and more awesome pro features!

[Learn more, Memberships starting at \\$2.50/m!](#)

**Follow me
on Twitter!**

@ConvertingColor