

Converting Colors

XYZ(32.1438, 31.5422, 27.3161)

Have a look what the booklet for
XYZ(32.1438, 31.5422, 27.3161)
contains.

XYZ(32.2625, 31.6154, 27.3236)	3
<i>Conversions</i>	4
<i>Details</i>	6
<i>Harmonies</i>	12
<i>Previews</i>	24
<i>Color Blindness Simulation</i>	28
<i>CSS Examples</i>	31

Color

**XYZ(32.2625, 31.6154,
27.3236)**

Conversions

Conversions Part 1

Format	Color
Hex	AE9387
RGB	174, 147, 135
RGB Percent	68%, 58%, 53%
CMY	0.3176, 0.4235, 0.4706
CMYK	0.00, 0.16, 0.22, 0.32
HSL	18°, 19%, 61%
HSV	18°, 22%, 68%
XYZ	32.2625, 31.6154, 27.3236
YIQ	153.7050, 19.9440, 1.9920

Conversions

Conversions Part 2

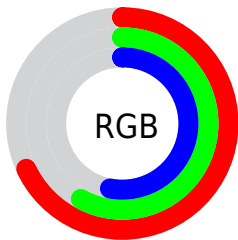
Format	Color
RYB	174, 152, 135
Decimal	11441031
CIELab	63.02, 8.16, 10.10
CIELCh	63, 12.985, 51.042
Yxy	31.6154, 0.3537, 0.3467
Android (android.graphics.Color)	4289631111 (0xFFAE9387)
YUV	153.7050, -9.2216, 17.7987
Hunter-Lab	56.2276, 4.0222, 10.5475

Details

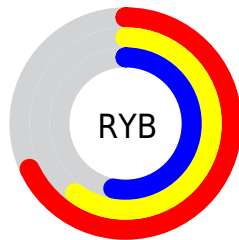
The XYZ color **32.2625, 31.6154, 27.3236** is a light color, and the websafe version is hex **CC9999**. A complement of this color would be **30.5518, 34.0467, 45.0062**, and the grayscale version is **30.6196, 32.2142, 35.0813**.

A 20% lighter version of the original color is **62.5969, 62.2271, 56.2888**, and **13.7077, 13.0866, 10.3978** is the 20% darker color. If you saturate the color by 10%, you get **29.3604, 27.6140, 20.7981**, and if you desaturate by 10%, it is **35.5627, 36.0921, 34.9704**.

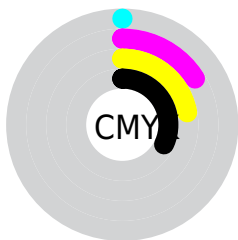
Distribution



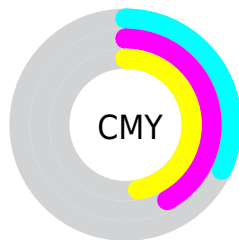
- Red (68%)
- Green (58%)
- Blue (53%)



- Red (68%)
- Yellow (60%)
- Blue (53%)



- Cyan (0%)
- Magenta (16%)
- Yellow (22%)
- Black (32%)



- Cyan (32%)
- Magenta (42%)
- Yellow (47%)

Brightness & Saturation Gradients

These gradients show how the XYZ color 32.2625, 31.6154, 27.3236 changes by changing the brightness by 10 percent. The first figure shows a shift by +10% for each color and the second figure -10%.

Similar to the brightness gradients but the following saturation gradients show a change of the XYZ color 32.2625, 31.6154, 27.3236 by changing the saturation by 10% instead.

■ 32.2625, 31.6154,
27.3236

■ 32.2625, 31.6154,
27.3236

304.0374,
309.3635, 303.0301

■ 21.7186, 21.0679,
17.5818

■ 62.5848, 62.2077,
56.4127

■ 13.7657, 13.1736,
10.4839

■ 83.0939, 83.0212,
76.5972

■ 8.0385, 7.5482,
5.6112

■ 107.6555,
108.0256, 101.0996

■ 4.1716, 3.8073,
2.5452

136.6348,
137.6052, 130.3385

■ 1.7997, 1.5663,
0.8640

170.3973,
172.1444, 164.7325

■ 0.5175, 0.3347,
0.0000

209.3084,

■ 0.0000, 0.0000,

212.0276, 204.7001

0.0000

253.7333,
257.6392, 250.6598

■ 32.2625, 31.6154,
27.3236

■ 32.2625, 31.6154,
27.3236

■ 29.3604, 27.6140,
20.7981

■ 35.5627, 36.0921,
34.9704

■ 26.8381, 24.0676,
15.3386

■ 39.2732, 41.0547,
43.7861

■ 24.6797, 20.9608,
10.8884

■ 43.4090, 46.5193,
53.8180

■ 22.8668, 18.2757,
7.3845

■ 47.9832, 52.4996,
65.1101

■ 21.3797, 15.9931,
4.7565

■ 53.0087, 59.0088,
77.7042

■ 20.1960, 14.0920,
2.9245

■ 58.4977, 66.0598,
91.6403

■ 19.2901, 12.5493,
1.7931

■ 64.1704, 73.5482,
105.4218

■ 18.7542, 11.5957,
1.2497

■ 67.6647, 80.5366,
106.5866

■ 71.2657, 87.7387,
107.7869

Harmonies

Analogous

The Analogous color harmony consists of three colors that are next to each other on the color wheel.



33.3724, 31.6154, 31.0095



32.2625, 31.6154, 27.3236



30.5878, 31.6154, 25.5881

Triad

The Triadic color harmony groups three colors that are evenly spaced from another and form a triangle on the color wheel.



32.2625, 31.6154, 27.3236



26.7810, 31.6154, 32.9138



31.3004, 31.6154, 44.4511

Complementary

The Complementary color scheme is a pair of colors which are on the opposite of each other on the color wheel.



32.2625, 31.6154, 27.3236



30.5518, 34.0467, 45.0062

Split Complementary

Split-complementary colors differ from the complementary color scheme. The scheme consists of three colors, the original color and two neighbors of the complement color.



29.5175, 31.6154, 45.0900



32.2625, 31.6154, 27.3236



26.9548, 31.6154, 38.0799

Square

The Square scheme is like the rectangle color scheme, but the four colors are evenly spaced on the color wheel.



32.2625, 31.6154, 27.3236



27.4556, 31.6154, 28.5988



27.9401, 31.6154, 42.6584



32.8018, 31.6154, 40.9904

Rectangle

The Rectangle color scheme consists of four colors that form a rectangle on the color wheel.



32.2625, 31.6154, 27.3236



29.3961, 31.6154, 25.6392



27.9401, 31.6154, 42.6584



30.7125, 31.6154, 45.0156

Sweetspot

The Sweet Spot groups the original color and five complimentary colors.



32.2633, 31.6168, 27.3243



67.9725, 70.1168, 71.6211



32.6682, 28.9463, 38.1882



15.0210, 15.4683, 15.7127



84.5950, 89.0005, 96.9216



16.2198, 17.0645, 18.5832

Same Dimension

The Same Dimension uses a secret algorithm to generate beautiful new colors.



32.2633, 31.6168, 27.3243



55.7673, 53.5669, 43.3198



35.5017, 38.0935, 28.4037



8.1988, 8.4025, 8.4031



13.6496, 8.5048, 0.9222



0.4289, 0.3349, 0.0420

Inverse Universe

The Inverse Universe completely reimagines the original color for something new.



30.5518, 34.0467, 45.0062



52.0936, 58.7708, 81.2351



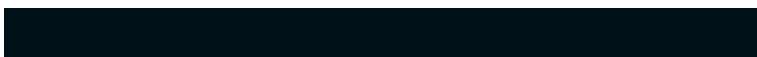
27.4245, 27.7922, 43.9637



8.0252, 8.6497, 10.1993



10.5062, 12.1463, 30.8352



0.3378, 0.4289, 0.8730

Previews

White Background



This preview shows how the XYZ color 32.2625, 31.6154, 27.3236 looks on a white background.

Color Contrast Check

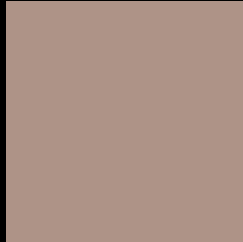
Large Text (above 18pt) WCAG AA × Fail

Any Text WCAG AA × Fail

Large Text (above 18pt) WCAG AAA × Fail

Any Text WCAG AAA × Fail

Black Background



This preview shows how the XYZ color 32.2625, 31.6154, 27.3236 looks on a black background.

Color Contrast Check

Large Text (above 18pt) WCAG AA ✓ Pass

Any Text WCAG AA ✓ Pass

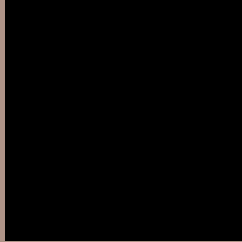
Large Text (above 18pt) WCAG AAA ✓ Pass

Any Text WCAG AAA ✓ Pass

If you want to check with other color combinations, try the [Color Contrast Checker](#).

XYZ 32.2625, 31.6154, 27.3236

Background



This preview shows how black text looks on a background with the XYZ color 32.2625, 31.6154, 27.3236.



This preview shows how white text looks on a background with the XYZ color 32.2625, 31.6154,

Color Blindness Simulation

Color vision deficiency is a very complex topic, and I could not describe the different causes any better than Wikipedia does, so if you want to learn more, you should check out their [article about color blindness](#).

Dichromacy



Original Color

32.2625, 31.6154, 27.3236

Protanopia

30.1138, 31.6624, 28.5690

Deuteranopia

32.2625, 31.6154, 27.3236



Tritanopia

33.7941, 31.5432, 35.3176

Trichromacy



Original Color

32.2625, 31.6154, 27.3236

Protanomaly

30.7315, 31.5113, 28.1295

Deuteranomaly

32.2625, 31.6154, 27.3236

Tritanomaly

33.1499, 31.5029, 32.3504

Monochromacy



Original Color

32.2625, 31.6154, 27.3236

Achromatopsia

30.7148, 32.3143, 35.1903

Achromatomaly

31.0310, 31.8169, 32.1095

CSS Examples

Text

The CSS property to change the color of the text to XYZ 32.2625, 31.6154, 27.3236 is called "color". The color property can be set on classes, ids or directly on the HTML element.

This example shows how text in the color `rgb(174, 147, 135)` looks like.

```
.text, #text, p{  
    color:rgb(174, 147, 135)  
}
```

If you want to add a text shadow in that color use the text-shadow property, you can generate a text shadow directly with our [CSS Text Shadow Generator](#).

Here you see how black text with a 4 pixel rgb(174, 147, 135) colored shadow looks like.

```
.shadow{ text-shadow: 4px 4px 2px rgb(174, 147, 135) }
```

Border

The CSS property to change the border of an element to XYZ 32.2625, 31.6154, 27.3236 is called "border". The border property can be set on classes, ids or directly on the HTML element.

This example shows the color as border, it can be applied via the CSS property "border" or "border-color".

```
.border, #border, table{ border:4px solid rgb(174, 147, 135) }
```


If only the border color should be changed use the property `border-color`.

```
.border{ border-color:rgb(174, 147, 135) }
```

If you want to add a box shadow in that color use:

Here you see how a box with a 4 pixel `rgb(174, 147, 135)` colored shadow looks like.

```
.boxshadow{ -moz-box-shadow:4px 4px 4px  
4px rgb(174, 147, 135); -webkit-box-  
shadow:4px 4px 4px 4px rgb(174, 147, 135);  
box-shadow:4px 4px 4px 4px rgb(174, 147,  
135) }
```

Background

The CSS property to change the background color of an element to XYZ 32.2625, 31.6154, 27.3236 is called "background". The background property can be set on classes, ids or directly on the HTML element.

```
.background, #background, body{  
background: rgb(174, 147, 135) }
```

If only the background color should be changed can be used:

```
.background{ background-color: rgb(174,  
147, 135) }
```

This example shows the color as background, it is applied via the CSS property "background".

To optimize and compress your CSS code, you can use our [online CSS compressor and optimizer](#) based on csstidy. If you want to create a linear or radial gradient as background or border, check our [CSS Gradient Generator](#).

Hey! You found this booklet interesting? Support Converting Colors with the new Membership Option!

The pro membership hides all ads, plus gives you double the colors in the color bucket, and more awesome pro features!

[Learn more, Memberships starting at \\$2.50/m!](#)

**Follow me
on Twitter!**

@ConvertingColor