

Converting Colors

XYZ(32.2023, 19.1014, 19.7590)

Have a look what the booklet for
XYZ(32.2023, 19.1014, 19.7590)
contains.

XYZ(32.2023, 19.1014, 19.7590)	3
<i>Conversions</i>	4
<i>Details</i>	6
<i>Harmonies</i>	12
<i>Previews</i>	24
<i>Color Blindness Simulation</i>	28
<i>CSS Examples</i>	31

Color

**XYZ(32.2023, 19.1014,
19.7590)**

Conversions

Conversions Part 1

Format	Color
Hex	D34278
RGB	211, 66, 120
RGB Percent	83%, 26%, 47%
CMY	0.1726, 0.7411, 0.5294
CMYK	0.00, 0.69, 0.43, 0.17
HSL	338°, 62%, 54%
HSV	338°, 69%, 83%
XYZ	32.2023, 19.1014, 19.7590
YIQ	115.5110, 69.0860, 47.5340

Conversions

Conversions Part 2

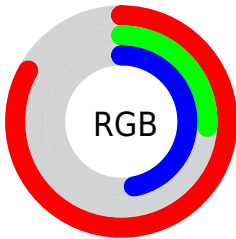
Format	Color
RYB	211, 66, 120
Decimal	13845112
CIELab	50.81, 60.61, 1.95
CIELCh	51, 60.643, 1.844
Yxy	19.1014, 0.4532, 0.2688
Android (android.graphics.Color)	4292035192 (0xFFD34278)
YUV	115.5110, 2.2131, 83.7439
Hunter-Lab	43.7051, 55.0362, 3.7887

Details

The XYZ color **32.2023, 19.1014, 19.7590** is a dark color, and the websafe version is hex **CC3366**. The color can be described as middle muted rose. A complement of this color would be **31.6281, 50.1815, 39.9212**, and the grayscale version is **16.4309, 17.2866, 18.8251**.

A 20% lighter version of the original color is **55.7694, 38.4045, 43.5032**, and **13.9322, 7.0472, 6.7568** is the 20% darker color. If you saturate the color by 10%, you get **30.4399, 16.7751, 15.4767**, and if you desaturate by 10%, it is **34.5314, 22.3832, 24.7789**.

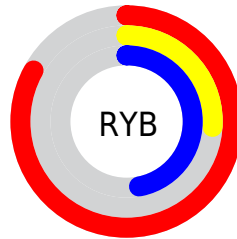
Distribution



Red (83%)

Green (26%)

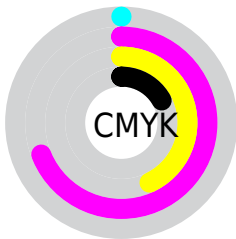
Blue (47%)



Red (83%)

Yellow (26%)

Blue (47%)

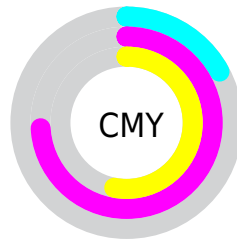


Cyan (0%)

Magenta (69%)

Yellow (43%)

Black (17%)



Cyan (17%)

Magenta (74%)

Yellow (53%)

Brightness & Saturation Gradients

These gradients show how the XYZ color 32.2023, 19.1014, 19.7590 changes by changing the brightness by 10 percent. The first figure shows a shift by +10% for each color and the second figure -10%.

Similar to the brightness gradients but the following saturation gradients show a change of the XYZ color 32.2023, 19.1014, 19.7590 by changing the saturation by 10% instead.

■ 32.2023, 19.1014,
19.7590

■ 32.2023, 19.1014,
19.7590

303.7687,
247.0080, 263.1684

■ 21.6724, 11.7436,
12.0376

■ 62.4912, 41.9054,
43.8664

■ 13.7316, 6.5693,
6.6465

■ 82.9808, 58.1203,
61.0895

■ 8.0147, 3.1942,
3.1669

■ 107.5210, 78.0564,
82.3170

■ 4.1562, 1.2340,
1.1805

■ 136.4772,
102.0980, 107.9674

■ 1.7909, 0.0892,
0.0000

■ 170.2147,
130.6296, 138.4591

■ 0.5122, 0.0000,
0.0000

209.0989,

■ 0.0000, 0.0000,

164.0355, 174.2109

0.0000

253.4951,
202.7002, 215.6411

■ 32.2023, 19.1014,
19.7590

■ 32.2023, 19.1014,
19.7590

■ 30.4399, 16.7751,
15.4767

■ 34.5314, 22.3832,
24.7789

■ 29.1852, 15.2937,
11.8896

■ 37.4747, 26.7087,
30.5730

■ 28.3513, 14.4909,
8.9450

■ 41.0764, 32.1596,
37.1760

■ 28.2596, 14.4071,
8.6070

■ 45.3757, 38.8085,
44.6201

■ 50.4089, 46.7218,
52.9354

■ 56.2096, 55.9611,
62.1507

■ 62.8091, 66.5838,
72.2931

■ 70.2372, 78.6442,
83.3885

■ 78.2313, 91.6118,
95.3650

Harmonies

Analogous

The Analogous color harmony consists of three colors that are next to each other on the color wheel.



30.2624, 19.1014, 40.4697



32.2023, 19.1014, 19.7590



29.7465, 19.1014, 7.8348

Triad

The Triadic color harmony groups three colors that are evenly spaced from another and form a triangle on the color wheel.



32.2023, 19.1014, 19.7590



12.7510, 19.1014, 3.5124



13.2627, 19.1014, 65.2861

Complementary

The Complementary color scheme is a pair of colors which are on the opposite of each other on the color wheel.



32.2023, 19.1014, 19.7590



31.6281, 50.1815, 39.9212

Split Complementary

Split-complementary colors differ from the complementary color scheme. The scheme consists of three colors, the original color and two neighbors of the complement color.



10.0505, 19.1014, 43.3907



32.2023, 19.1014, 19.7590



9.8038, 19.1014, 8.8290

Square

The Square scheme is like the rectangle color scheme, but the four colors are evenly spaced on the color wheel.



32.2023, 19.1014, 19.7590



17.7887, 19.1014, 2.2118



8.9346, 19.1014, 21.8732



18.5269, 19.1014, 73.9401

Rectangle

The Rectangle color scheme consists of four colors that form a rectangle on the color wheel.



32.2023, 19.1014, 19.7590



26.2038, 19.1014, 4.1852



8.9346, 19.1014, 21.8732



11.9508, 19.1014, 58.7995

Sweetspot

The Sweet Spot groups the original color and five complimentary colors.



32.2028, 19.1024, 19.7593



75.3350, 68.4847, 77.9282



27.3049, 15.6109, 63.2018



15.6557, 13.9200, 15.9084



0.0000, 0.0000, 0.0000



20.3446, 21.4041, 23.3091

Same Dimension

The Same Dimension uses a secret algorithm to generate beautiful new colors.



32.2028, 19.1024, 19.7593



45.8363, 24.6555, 21.3338



30.9350, 20.4173, 7.4662



11.9882, 11.8800, 13.2136



17.1004, 8.7130, 5.4351



0.9941, 0.5024, 0.5038

Inverse Universe

The Inverse Universe completely reimagines the original color for something new.



32.2028, 19.1024, 19.7593



45.8363, 24.6555, 21.3338



33.3157, 44.4827, 68.4578



11.9882, 11.8800, 13.2136



17.1004, 8.7130, 5.4351



0.9941, 0.5024, 0.5038

Previews

White Background



This preview shows how the XYZ color 32.2023, 19.1014, 19.7590 looks on a white background.

Color Contrast Check

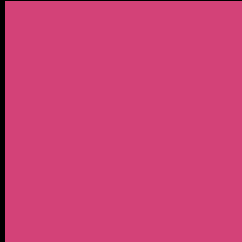
Large Text (above 18pt) WCAG AA ✓ Pass

Any Text WCAG AA × Fail

Large Text (above 18pt) WCAG AAA × Fail

Any Text WCAG AAA × Fail

Black Background



This preview shows how the XYZ color 32.2023, 19.1014, 19.7590 looks on a black background.

Color Contrast Check

Large Text (above 18pt) WCAG AA ✓ Pass

Any Text WCAG AA ✓ Pass

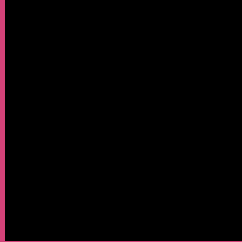
Large Text (above 18pt) WCAG AAA ✓ Pass

Any Text WCAG AAA × Fail

If you want to check with other color combinations, try the [Color Contrast Checker](#).

XYZ 32.2023, 19.1014, 19.7590

Background



This preview shows how black text looks on a background with the XYZ color 32.2023, 19.1014, 19.7590.



This preview shows how white text looks on a background with the XYZ color 32.2023, 19.1014,

Color Blindness Simulation

Color vision deficiency is a very complex topic, and I could not describe the different causes any better than Wikipedia does, so if you want to learn more, you should check out their [article about color blindness](#).

Dichromacy



Original Color

32.2023, 19.1014, 19.7590

Protanopia

19.4057, 19.3103, 32.8415

Deuteranopia

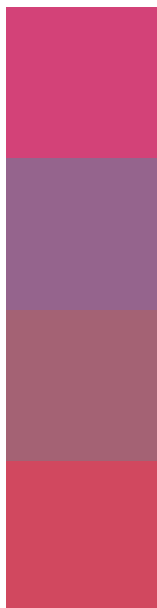
19.6585, 19.2332, 18.2991



Tritanopia

29.9765, 19.0212, 9.6809

Trichromacy



Original Color

32.2023, 19.1014, 19.7590

Protanomaly

21.7593, 17.4270, 27.4162

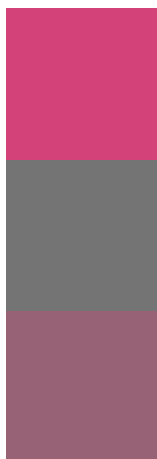
Deuteranomaly

22.8299, 17.8888, 18.7726

Tritanomaly

30.6774, 19.0163, 12.8801

Monochromacy



Original Color

32.2023, 19.1014, 19.7590

Achromatopsia

16.6002, 17.4647, 19.0191

Achromatomaly

20.3411, 16.5990, 18.9615

CSS Examples

Text

The CSS property to change the color of the text to XYZ 32.2023, 19.1014, 19.7590 is called "color". The color property can be set on classes, ids or directly on the HTML element.

This example shows how text in the color `rgb(211, 66, 120)` looks like.

```
.text, #text, p{  
    color:rgb(211, 66, 120)  
}
```

If you want to add a text shadow in that color use the text-shadow property, you can generate a text shadow directly with our [CSS Text Shadow Generator](#).

Here you see how black text with a 4 pixel rgb(211, 66, 120) colored shadow looks like.

```
.shadow{ text-shadow: 4px 4px 2px rgb(211, 66, 120) }
```

Border

The CSS property to change the border of an element to XYZ 32.2023, 19.1014, 19.7590 is called "border". The border property can be set on classes, ids or directly on the HTML element.

This example shows the color as border, it can be applied via the CSS property "border" or "border-color".

```
.border, #border, table{ border:4px solid rgb(211, 66, 120) }
```


If only the border color should be changed use the property `border-color`.

```
.border{ border-color:rgb(211, 66, 120) }
```

If you want to add a box shadow in that color use:

Here you see how a box with a 4 pixel `rgb(211, 66, 120)` colored shadow looks like.

```
.boxshadow{ -moz-box-shadow:4px 4px 4px  
4px rgb(211, 66, 120); -webkit-box-  
shadow:4px 4px 4px 4px rgb(211, 66, 120);  
box-shadow:4px 4px 4px 4px rgb(211, 66,  
120) }
```

Background

The CSS property to change the background color of an element to XYZ 32.2023, 19.1014, 19.7590 is called "background". The background property can be set on classes, ids or directly on the HTML element.

```
.background, #background, body{  
background: rgb(211, 66, 120) }
```

If only the background color should be changed can be used:

```
.background{ background-color: rgb(211, 66,  
120) }
```

This example shows the color as background, it is applied via the CSS property "background".

To optimize and compress your CSS code, you can use our [online CSS compressor and optimizer](#) based on csstidy. If you want to create a linear or radial gradient as background or border, check our [CSS Gradient Generator](#).

Hey! You found this booklet interesting? Support Converting Colors with the new Membership Option!

The pro membership hides all ads, plus gives you double the colors in the color bucket, and more awesome pro features!

[Learn more, Memberships starting at \\$2.50/m!](#)

**Follow me
on Twitter!**

@ConvertingColor