

Converting Colors

XYZ(32.2041, 32.0295, 15.7698)

Have a look what the booklet for
XYZ(32.2041, 32.0295, 15.7698)
contains.

XYZ(32.2760, 32.1102, 15.8060)	3
<i>Conversions</i>	4
<i>Details</i>	6
<i>Harmonies</i>	12
<i>Previews</i>	24
<i>Color Blindness Simulation</i>	28
<i>CSS Examples</i>	31

Color

**XYZ(32.2760, 32.1102,
15.8060)**

Conversions

Conversions Part 1

Format	Color
Hex	B79461
RGB	183, 148, 97
RGB Percent	72%, 58%, 38%
CMY	0.2824, 0.4196, 0.6196
CMYK	0.00, 0.19, 0.47, 0.28
HSL	36°, 37%, 55%
HSV	36°, 47%, 72%
XYZ	32.2760, 32.1102, 15.8060
YIQ	152.6510, 37.2310, -8.4410

Conversions

Conversions Part 2

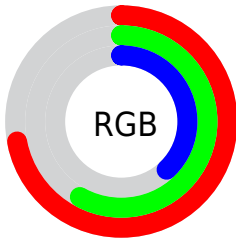
Format	Color
RYB	156, 183, 97
Decimal	12031073
CIELab	63.43, 6.45, 31.84
CIELCh	63, 32.489, 78.558
Yxy	32.1102, 0.4025, 0.4004
Android (android.graphics.Color)	4290221153 (0xFFB79461)
YUV	152.6510, -27.4359, 26.6161
Hunter-Lab	56.6659, 2.5056, 23.1281

Details

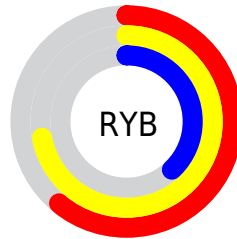
The XYZ color **32.2760, 32.1102, 15.8060** is a dark color, and the websafe version is hex **CC9966**. A complement of this color would be **21.7279, 22.4618, 47.9899**, and the grayscale version is **30.2314, 31.8057, 34.6365**.

A 20% lighter version of the original color is **62.7415, 63.0799, 36.8858**, and **13.8241, 13.5463, 4.7918** is the 20% darker color. If you saturate the color by 10%, you get **30.3887, 29.5472, 11.4418**, and if you desaturate by 10%, it is **34.4369, 34.9053, 21.2331**.

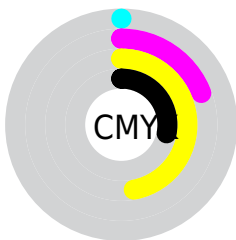
Distribution



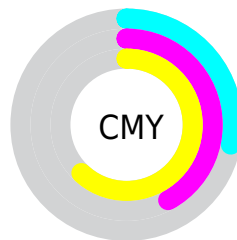
- Red (72%)
- Green (58%)
- Blue (38%)



- Red (61%)
- Yellow (72%)
- Blue (38%)



- Cyan (0%)
- Magenta (19%)
- Yellow (47%)
- Black (28%)



- Cyan (28%)
- Magenta (42%)
- Yellow (62%)

Brightness & Saturation Gradients

These gradients show how the XYZ color 32.2760, 32.1102, 15.8060 changes by changing the brightness by 10 percent. The first figure shows a shift by +10% for each color and the second figure -10%.

Similar to the brightness gradients but the following saturation gradients show a change of the XYZ color 32.2760, 32.1102, 15.8060 by changing the saturation by 10% instead.

■ 32.2760, 32.1102,
15.8060

■ 32.2760, 32.1102,
15.8060

304.0976,
311.6209, 240.0007

■ 21.7290, 21.4457,
9.2341

■ 62.6058, 62.9838,
37.0232

■ 13.7734, 13.4502,
4.7953

■ 83.1193, 83.9617,
52.5055

■ 8.0439, 7.7393,
2.0710

■ 107.6856,
109.1462, 71.7952

■ 4.1751, 3.9286,
0.5984

■ 136.6702,
138.9216, 95.3105

■ 1.8016, 1.6337,
0.0000

170.4383,
173.6724, 123.4703

■ 0.5187, 0.3801,
0.0000

209.3553,

■ 0.0000, 0.0000,

213.7829, 156.6928

0.0000

253.7866,
259.6377, 195.3968

■ 32.2760, 32.1102,
15.8060

■ 32.2760, 32.1102,
15.8060

■ 30.3887, 29.5472,
11.4418

■ 34.4369, 34.9053,
21.2331

■ 28.7575, 27.2034,
8.0659

■ 36.8828, 37.9357,
27.7872

■ 27.3662, 25.0713,
5.5969

■ 39.6273, 41.2100,
35.5292

■ 26.1953, 23.1407,
3.9393

■ 42.6821, 44.7351,
44.5153

■ 25.2181, 21.3984,
2.9592

■ 46.0585, 48.5175,
54.7981

■ 24.9473, 20.9051,
2.7202

■ 49.7670, 52.5633,
66.4269

■ 53.8176, 56.8786,
79.4488

■ 58.2199, 61.4690,
93.9082

■ 61.8852, 65.9009,
104.0662

Harmonies

Analogous

The Analogous color harmony consists of three colors that are next to each other on the color wheel.



36.6388, 32.1102, 19.4308



32.2760, 32.1102, 15.8060



27.8374, 32.1102, 16.2815

Triad

The Triadic color harmony groups three colors that are evenly spaced from another and form a triangle on the color wheel.



32.2760, 32.1102, 15.8060



23.0022, 32.1102, 43.4943



37.5068, 32.1102, 54.1522

Complementary

The Complementary color scheme is a pair of colors which are on the opposite of each other on the color wheel.



32.2760, 32.1102, 15.8060



21.7279, 22.4618, 47.9899

Split Complementary

Split-complementary colors differ from the complementary color scheme. The scheme consists of three colors, the original color and two neighbors of the complement color.



33.3692, 32.1102, 64.2531



32.2760, 32.1102, 15.8060



25.1230, 32.1102, 57.1280

Square

The Square scheme is like the rectangle color scheme, but the four colors are evenly spaced on the color wheel.



32.2760, 32.1102, 15.8060



22.7718, 32.1102, 30.2550



28.8285, 32.1102, 65.4597



39.8517, 32.1102, 40.1347

Rectangle

The Rectangle color scheme consists of four colors that form a rectangle on the color wheel.



32.2760, 32.1102, 15.8060



25.4185, 32.1102, 18.8915



28.8285, 32.1102, 65.4597



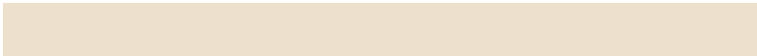
36.2616, 32.1102, 58.2524

Sweetspot

The Sweet Spot groups the original color and five complimentary colors.



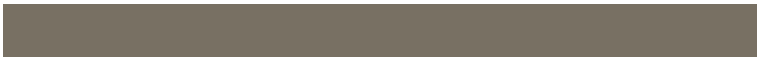
32.2768, 32.1117, 15.8066



72.4271, 75.5054, 67.8514



28.0254, 20.3058, 24.5725



15.7455, 16.3836, 14.2564



88.6918, 93.3107, 101.6153



17.8044, 18.7317, 20.3988

Same Dimension

The Same Dimension uses a secret algorithm to generate beautiful new colors.



32.2768, 32.1117, 15.8066



54.4475, 52.9489, 20.5395



36.9579, 43.9406, 17.8431



9.4354, 9.8737, 9.5154



17.4725, 14.7213, 1.9206



0.6751, 0.6373, 0.0874

Inverse Universe

The Inverse Universe completely reimagines the original color for something new.



21.7279, 22.4618, 47.9899



33.3501, 33.6729, 84.9775



18.5505, 14.9217, 46.7020



8.8131, 9.3035, 11.4107



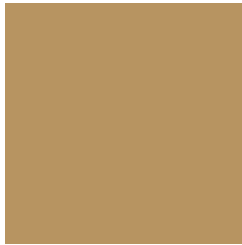
7.7567, 5.9731, 31.9972



0.3347, 0.3330, 1.1484

Previews

White Background



This preview shows how the XYZ color 32.2760, 32.1102, 15.8060 looks on a white background.

Color Contrast Check

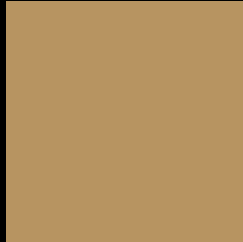
Large Text (above 18pt) WCAG AA × Fail

Any Text WCAG AA × Fail

Large Text (above 18pt) WCAG AAA × Fail

Any Text WCAG AAA × Fail

Black Background



This preview shows how the XYZ color 32.2760, 32.1102, 15.8060 looks on a black background.

Color Contrast Check

Large Text (above 18pt) WCAG AA ✓ Pass

Any Text WCAG AA ✓ Pass

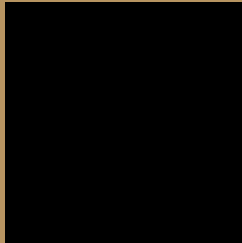
Large Text (above 18pt) WCAG AAA ✓ Pass

Any Text WCAG AAA ✓ Pass

If you want to check with other color combinations, try the [Color Contrast Checker](#).

XYZ 32.2760, 32.1102, 15.8060

Background



This preview shows how black text looks on a background with the XYZ color 32.2760, 32.1102, 15.8060.



This preview shows how white text looks on a background with the XYZ color 32.2760, 32.1102,

Color Blindness Simulation

Color vision deficiency is a very complex topic, and I could not describe the different causes any better than Wikipedia does, so if you want to learn more, you should check out their [article about color blindness](#).

Dichromacy



Original Color

32.2760, 32.1102, 15.8060

Protanopia

29.7441, 32.2275, 16.4572

Deuteranopia

32.8411, 32.1696, 15.7877



Tritanopia

35.9314, 32.0081, 33.9902

Trichromacy



Original Color

32.2760, 32.1102, 15.8060

Protanomaly

30.6664, 32.2226, 16.1586

Deuteranomaly

32.5990, 32.0448, 15.7764

Tritanomaly

34.3878, 32.0516, 26.2039

Monochromacy



Original Color

32.2760, 32.1102, 15.8060

Achromatopsia

30.2779, 31.8547, 34.6897

Achromatomaly

30.6101, 31.7192, 26.6994

CSS Examples

Text

The CSS property to change the color of the text to XYZ 32.2760, 32.1102, 15.8060 is called "color". The color property can be set on classes, ids or directly on the HTML element.

This example shows how text in the color `rgb(183, 148, 97)` looks like.

```
.text, #text, p{  
    color:rgb(183, 148, 97)  
}
```

If you want to add a text shadow in that color use the text-shadow property, you can generate a text shadow directly with our [CSS Text Shadow Generator](#).

Here you see how black text with a 4 pixel rgb(183, 148, 97) colored shadow looks like.

```
.shadow{ text-shadow: 4px 4px 2px rgb(183, 148, 97) }
```

Border

The CSS property to change the border of an element to XYZ 32.2760, 32.1102, 15.8060 is called "border". The border property can be set on classes, ids or directly on the HTML element.

This example shows the color as border, it can be applied via the CSS property "border" or "border-color".

```
.border, #border, table{ border:4px solid rgb(183, 148, 97) }
```


If only the border color should be changed use the property `border-color`.

```
.border{ border-color:rgb(183, 148, 97) }
```

If you want to add a box shadow in that color use:

Here you see how a box with a 4 pixel `rgb(183, 148, 97)` colored shadow looks like.

```
.boxshadow{ -moz-box-shadow:4px 4px 4px  
4px rgb(183, 148, 97); -webkit-box-  
shadow:4px 4px 4px 4px rgb(183, 148, 97);  
box-shadow:4px 4px 4px 4px rgb(183, 148,  
97) }
```

Background

The CSS property to change the background color of an element to XYZ 32.2760, 32.1102, 15.8060 is called "background". The background property can be set on classes, ids or directly on the HTML element.

```
.background, #background, body{  
background: rgb(183, 148, 97) }
```

If only the background color should be changed can be used:

```
.background{ background-color: rgb(183,  
148, 97) }
```

This example shows the color as background, it is applied via the CSS property "background".

To optimize and compress your CSS code, you can use our [online CSS compressor and optimizer](#) based on csstidy. If you want to create a linear or radial gradient as background or border, check our [CSS Gradient Generator](#).

Hey! You found this booklet interesting? Support Converting Colors with the new Membership Option!

The pro membership hides all ads, plus gives you double the colors in the color bucket, and more awesome pro features!

[Learn more, Memberships starting at \\$2.50/m!](#)

**Follow me
on Twitter!**

@ConvertingColor