

Converting Colors

XYZ(32.2682, 28.9540, 28.6591)

Have a look what the booklet for
XYZ(32.2682, 28.9540, 28.6591)
contains.

XYZ(32.2200, 28.9247, 28.6958)	3
<i>Conversions</i>	4
<i>Details</i>	6
<i>Harmonies</i>	12
<i>Previews</i>	24
<i>Color Blindness Simulation</i>	28
<i>CSS Examples</i>	31

Color

**XYZ(32.2200, 28.9247,
28.6958)**

Conversions

Conversions Part 1

Format	Color
Hex	B4878C
RGB	180, 135, 140
RGB Percent	71%, 53%, 55%
CMY	0.2941, 0.4706, 0.4510
CMYK	0.00, 0.25, 0.22, 0.29
HSL	353°, 23%, 62%
HSV	353°, 25%, 71%
XYZ	32.2200, 28.9247, 28.6958
YIQ	149.0250, 25.2150, 11.0950

Conversions

Conversions Part 2

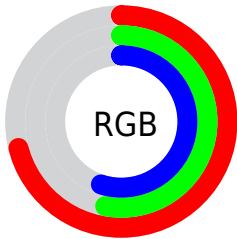
Format	Color
RYB	180, 135, 140
Decimal	11831180
CIELab	60.72, 17.96, 4.04
CIELCh	61, 18.411, 12.674
Yxy	28.9247, 0.3586, 0.3220
Android (android.graphics.Color)	4290021260 (0xFFB4878C)
YUV	149.0250, -4.4493, 27.1651
Hunter-Lab	53.7817, 12.8194, 6.0124

Details

The XYZ color **32.2200, 28.9247, 28.6958** is a light color, and the websafe version is hex **CC9999**. A complement of this color would be **34.0520, 40.8893, 46.6572**, and the grayscale version is **28.5889, 30.0778, 32.7547**.

A 20% lighter version of the original color is **62.2009, 57.6496, 58.3012**, and **13.6981, 11.6708, 11.2036** is the 20% darker color. If you saturate the color by 10%, you get **28.8224, 23.8822, 22.1593**, and if you desaturate by 10%, it is **36.2154, 34.8877, 36.2787**.

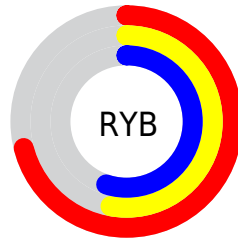
Distribution



Red (71%)

Green (53%)

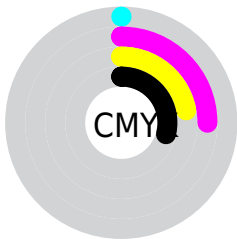
Blue (55%)



Red (71%)

Yellow (53%)

Blue (55%)

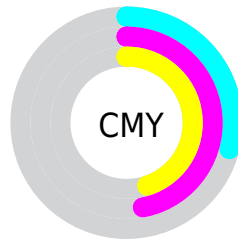


Cyan (0%)

Magenta (25%)

Yellow (22%)

Black (29%)



Cyan (29%)

Magenta (47%)


Yellow (45%)

Brightness & Saturation Gradients


These gradients show how the XYZ color 32.2200, 28.9247, 28.6958 changes by changing the brightness by 10 percent. The first figure shows a shift by +10% for each color and the second figure -10%.

Similar to the brightness gradients but the following saturation gradients show a change of the XYZ color 32.2200, 28.9247, 28.6958 by changing the saturation by 10% instead.


 32.2200, 28.9247,
28.6958


 32.2200, 28.9247,
28.6958


303.8477,
296.8595, 309.7928


 21.6860, 19.0239,
18.6072


 62.5187, 57.9574,
58.6298

 13.7416, 11.6875,
11.2129


 83.0140, 77.8581,
79.3124

 8.0217, 6.5313,
6.0942


 107.5605,
101.8609, 104.3633

 4.1607, 3.1707,
2.8328

136.5236,
130.3501, 134.2012

 1.7935, 1.2215,
1.0099

170.2684,
163.7102, 169.2445

 0.5137, 0.0792,
0.0000

209.1605,

 0.0000, 0.0000,

202.3255, 209.9119

0.0000

253.5651,
246.5805, 256.6218

■ 32.2200, 28.9247,
28.6958

■ 32.2200, 28.9247,
28.6958

■ 28.8224, 23.8822,
22.1593

■ 36.2154, 34.8877,
36.2787

■ 25.9914, 19.7105,
16.6216

■ 40.8330, 41.8096,
44.9494

■ 23.6969, 16.3615,
12.0337


■ 46.0987, 49.7316,
54.7492


■ 21.9046, 13.7806,
8.3422

■ 52.0363, 58.6912,
65.7165


■ 20.5765, 11.9066,
5.4879


■ 58.6682, 68.7240,
77.8881


 19.6690, 10.6692,
3.4049

 66.0161, 79.8640,
91.2993

 19.1297, 9.9826,
2.0167

 72.1547, 88.2523,
105.3351

 18.9487, 9.7538,
1.5452

 72.6325, 88.4434,
107.8509

Harmonies

Analogous

The Analogous color harmony consists of three colors that are next to each other on the color wheel.



32.1129, 28.9247, 35.5752



32.2200, 28.9247, 28.6958



31.0083, 28.9247, 23.3943

Triad

The Triadic color harmony groups three colors that are evenly spaced from another and form a triangle on the color wheel.



32.2200, 28.9247, 28.6958



24.4954, 28.9247, 22.7807



26.1471, 28.9247, 45.7908

Complementary

The Complementary color scheme is a pair of colors which are on the opposite of each other on the color wheel.



32.2200, 28.9247, 28.6958



34.0520, 40.8893, 46.6572

Split Complementary

Split-complementary colors differ from the complementary color scheme. The scheme consists of three colors, the original color and two neighbors of the complement color.



24.2522, 28.9247, 41.2760



32.2200, 28.9247, 28.6958



23.3372, 28.9247, 27.7377

Square

The Square scheme is like the rectangle color scheme, but the four colors are evenly spaced on the color wheel.



32.2200, 28.9247, 28.6958



26.4968, 28.9247, 20.3268



23.2509, 28.9247, 34.4686



28.5120, 28.9247, 46.1463

Rectangle

The Rectangle color scheme consists of four colors that form a rectangle on the color wheel.



32.2200, 28.9247, 28.6958



29.6544, 28.9247, 21.1956



23.2509, 28.9247, 34.4686



25.4375, 28.9247, 44.6822

Sweetspot

The Sweet Spot groups the original color and five complimentary colors.



32.2208, 28.9260, 28.6964



72.1651, 72.9967, 77.9975



34.5262, 29.7097, 47.0951



15.4883, 15.6134, 16.6535



86.6293, 91.1408, 99.2523



17.0014, 17.8868, 19.4787

Same Dimension

The Same Dimension uses a secret algorithm to generate beautiful new colors.



32.2208, 28.9260, 28.6964



54.8937, 47.2038, 45.2655



34.4653, 33.9914, 27.6678



8.5335, 8.5201, 9.0416



13.2380, 6.8127, 1.1472



0.4289, 0.2193, 0.1010

Inverse Universe

The Inverse Universe completely reimagines the original color for something new.



32.2208, 28.9260, 28.6964



54.8937, 47.2038, 45.2655



31.2839, 34.5530, 48.2008



8.5335, 8.5201, 9.0416



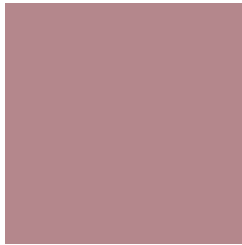
13.2380, 6.8127, 1.1472



0.4289, 0.2193, 0.1010

Previews

White Background



This preview shows how the XYZ color 32.2200, 28.9247, 28.6958 looks on a white background.

Color Contrast Check

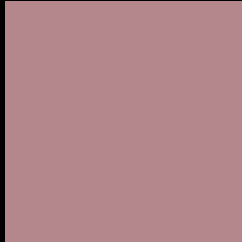
Large Text (above 18pt) WCAG AA ✓ Pass

Any Text WCAG AA ✗ Fail

Large Text (above 18pt) WCAG AAA ✗ Fail

Any Text WCAG AAA ✗ Fail

Black Background



This preview shows how the XYZ color 32.2200, 28.9247, 28.6958 looks on a black background.

Color Contrast Check

Large Text (above 18pt) WCAG AA ✓ Pass

Any Text WCAG AA ✓ Pass

Large Text (above 18pt) WCAG AAA ✓ Pass

Any Text WCAG AAA × Fail

If you want to check with other color combinations, try the [Color Contrast Checker](#).

XYZ 32.2200, 28.9247, 28.6958

Background



This preview shows how black text looks on a background with the XYZ color 32.2200, 28.9247, 28.6958.



This preview shows how white text looks on a background with the XYZ color 32.2200, 28.9247,

Color Blindness Simulation

Color vision deficiency is a very complex topic, and I could not describe the different causes any better than Wikipedia does, so if you want to learn more, you should check out their [article about color blindness](#).

Dichromacy



Original Color

32.2200, 28.9247, 28.6958

Protanopia

27.8616, 29.0227, 31.3276

Deuteranopia

29.6430, 29.1026, 28.4811



Tritanopia

32.6920, 28.9183, 30.6468

Trichromacy



Original Color

32.2200, 28.9247, 28.6958

Protanomaly

29.2042, 28.8332, 30.4117

Deuteranomaly

30.4704, 28.8754, 28.3936

Tritanomaly

32.5391, 28.8571, 29.8416

Monochromacy



Original Color

32.2200, 28.9247, 28.6958

Achromatopsia

28.5667, 30.0544, 32.7292

Achromatomaly

29.6588, 29.4954, 31.3241

CSS Examples

Text

The CSS property to change the color of the text to XYZ 32.2200, 28.9247, 28.6958 is called "color". The color property can be set on classes, ids or directly on the HTML element.

This example shows how text in the color `rgb(180, 135, 140)` looks like.

```
.text, #text, p{  
    color:rgb(180, 135, 140)  
}
```

If you want to add a text shadow in that color use the text-shadow property, you can generate a text shadow directly with our [CSS Text Shadow Generator](#).

Here you see how black text with a 4 pixel rgb(180, 135, 140) colored shadow looks like.

```
.shadow{ text-shadow: 4px 4px 2px rgb(180, 135, 140) }
```

Border

The CSS property to change the border of an element to XYZ 32.2200, 28.9247, 28.6958 is called "border". The border property can be set on classes, ids or directly on the HTML element.

This example shows the color as border, it can be applied via the CSS property "border" or "border-color".

```
.border, #border, table{ border:4px solid rgb(180, 135, 140) }
```


If only the border color should be changed use the property `border-color`.

```
.border{ border-color:rgb(180, 135, 140) }
```

If you want to add a box shadow in that color use:

Here you see how a box with a 4 pixel `rgb(180, 135, 140)` colored shadow looks like.

```
.boxshadow{ -moz-box-shadow:4px 4px 4px  
4px rgb(180, 135, 140); -webkit-box-  
shadow:4px 4px 4px 4px rgb(180, 135, 140);  
box-shadow:4px 4px 4px 4px rgb(180, 135,  
140) }
```

Background

The CSS property to change the background color of an element to XYZ 32.2200, 28.9247, 28.6958 is called "background". The background property can be set on classes, ids or directly on the HTML element.

```
.background, #background, body{  
background: rgb(180, 135, 140) }
```

If only the background color should be changed can be used:

```
.background{ background-color: rgb(180,  
135, 140) }
```

This example shows the color as background, it is applied via the CSS property "background".

To optimize and compress your CSS code, you can use our [online CSS compressor and optimizer](#) based on csstidy. If you want to create a linear or radial gradient as background or border, check our [CSS Gradient Generator](#).

Hey! You found this booklet interesting? Support Converting Colors with the new Membership Option!

The pro membership hides all ads, plus gives you double the colors in the color bucket, and more awesome pro features!

[Learn more, Memberships starting at \\$2.50/m!](#)

**Follow me
on Twitter!**

@ConvertingColor