

Converting Colors

XYZ(32.3096, 32.3475, 23.9515)

Have a look what the booklet for
XYZ(32.3096, 32.3475, 23.9515)
contains.

XYZ(32.2872, 32.4073, 23.9556)	3
<i>Conversions</i>	4
<i>Details</i>	6
<i>Harmonies</i>	12
<i>Previews</i>	24
<i>Color Blindness Simulation</i>	28
<i>CSS Examples</i>	31

Color

**XYZ(32.2872, 32.4073,
23.9556)**

Conversions

Conversions Part 1

Format	Color
Hex	AF967D
RGB	175, 150, 125
RGB Percent	69%, 59%, 49%
CMY	0.3137, 0.4117, 0.5098
CMYK	0.00, 0.14, 0.29, 0.31
HSL	30°, 24%, 59%
HSV	30°, 29%, 69%
XYZ	32.2872, 32.4073, 23.9556
YIQ	154.6250, 22.9250, -2.4750

Conversions

Conversions Part 2

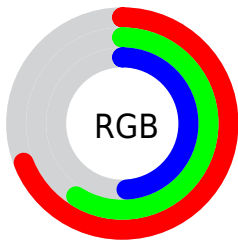
Format	Color
RYB	175, 175, 125
Decimal	11507325
CIELab	63.68, 5.43, 16.64
CIElCh	64, 17.502, 71.916
Yxy	32.4073, 0.3642, 0.3656
Android (android.graphics.Color)	4289697405 (0xFFAF967D)
YUV	154.6250, -14.6051, 17.8689
Hunter-Lab	56.9274, 1.6159, 14.8994

Details

The XYZ color **32.2872, 32.4073, 23.9556** is a dark color, and the websafe version is hex **CC9999**. A complement of this color would be **27.1014, 29.2670, 44.7782**, and the grayscale version is **31.0461, 32.6629, 35.5699**.

A 20% lighter version of the original color is **62.5837, 63.3890, 51.0563**, and **13.7924, 13.5831, 8.7323** is the 20% darker color. If you saturate the color by 10%, you get **29.9222, 29.3113, 18.1292**, and if you desaturate by 10%, it is **34.9552, 35.7935, 30.8555**.

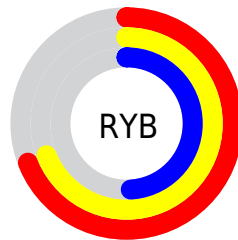
Distribution



Red (69%)

Green (59%)

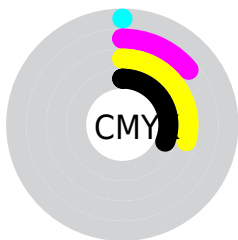
Blue (49%)



Red (69%)

Yellow (69%)

Blue (49%)

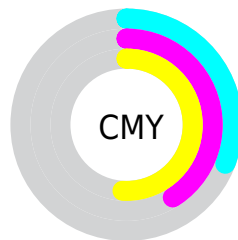


Cyan (0%)

Magenta (14%)

Yellow (29%)

Black (31%)



Cyan (31%)

Magenta (41%)

Yellow (51%)

Brightness & Saturation Gradients

These gradients show how the XYZ color 32.2872, 32.4073, 23.9556 changes by changing the brightness by 10 percent. The first figure shows a shift by +10% for each color and the second figure -10%.

Similar to the brightness gradients but the following saturation gradients show a change of the XYZ color 32.2872, 32.4073, 23.9556 by changing the saturation by 10% instead.

■ 32.2872, 32.4073,
23.9556

■ 32.2872, 32.4073,
23.9556

304.1476,
312.9705, 285.8753

■ 21.7376, 21.6728,
15.0888

■ 62.6232, 63.4491,
50.9007

■ 13.7797, 13.6167,
8.7344

■ 83.1403, 84.5251,
69.8160

■ 8.0483, 7.8545,
4.4739

■ 107.7106,
109.8171, 92.9179

■ 4.1779, 4.0020,
1.8888

136.6995,
139.7095, 120.6250

■ 1.8033, 1.6747,
0.4856

170.4722,
174.5866, 153.3557

■ 0.5196, 0.4072,
0.0000

209.3943,

■ 0.0000, 0.0000,

214.8329, 191.5286

0.0000

253.8309,
260.8327, 235.5623

■ 32.2872, 32.4073,
23.9556

■ 32.2872, 32.4073,
23.9556

■ 29.9222, 29.3113,
18.1292

■ 34.9552, 35.7935,
30.8555

■ 27.8449, 26.4925,
13.3192

■ 37.9354, 39.4738,
38.8782

■ 26.0427, 23.9432,
9.4659

■ 41.2397, 43.4574,
48.0721

■ 24.5007, 21.6535,
6.5028

■ 44.8786, 47.7518,
58.4823

■ 23.2020, 19.6126,
4.3546

■ 48.8620, 52.3643,
70.1516

■ 22.1277, 17.8088,
2.9331

■ 53.1997, 57.3018,
83.1205

■ 21.2456, 16.2249,
2.0838

■ 57.9006, 62.5710,
97.4277

■ 21.1291, 16.0137,
1.9773

■ 61.3209, 67.5174,
104.4079

■ 63.6775, 72.2305,
105.1935

Harmonies

Analogous

The Analogous color harmony consists of three colors that are next to each other on the color wheel.



34.4409, 32.4073, 27.0215



32.2872, 32.4073, 23.9556



29.8400, 32.4073, 23.6666

Triad

The Triadic color harmony groups three colors that are evenly spaced from another and form a triangle on the color wheel.



32.2872, 32.4073, 23.9556



26.4204, 32.4073, 38.1446



34.0564, 32.4073, 46.3033

Complementary

The Complementary color scheme is a pair of colors which are on the opposite of each other on the color wheel.



32.2872, 32.4073, 23.9556



27.1014, 29.2670, 44.7782

Split Complementary

Split-complementary colors differ from the complementary color scheme. The scheme consists of three colors, the original color and two neighbors of the complement color.



31.7848, 32.4073, 50.1954



32.2872, 32.4073, 23.9556



27.4292, 32.4073, 45.0842

Square

The Square scheme is like the rectangle color scheme, but the four colors are evenly spaced on the color wheel.



32.2872, 32.4073, 23.9556



26.5390, 32.4073, 31.2630



29.3634, 32.4073, 49.7218



35.4991, 32.4073, 39.6402

Rectangle

The Rectangle color scheme consists of four colors that form a rectangle on the color wheel.



32.2872, 32.4073, 23.9556



28.3790, 32.4073, 25.0316



29.3634, 32.4073, 49.7218



33.3594, 32.4073, 48.0165

Sweetspot

The Sweet Spot groups the original color and five complimentary colors.



32.2880, 32.4088, 23.9563



67.6128, 70.2957, 68.7320



30.5181, 25.9836, 32.2614



14.8511, 15.4079, 14.7948



84.5950, 89.0005, 96.9216



16.2198, 17.0645, 18.5832

Same Dimension

The Same Dimension uses a secret algorithm to generate beautiful new colors.



32.2880, 32.4088, 23.9563



55.2139, 54.6444, 36.4017



36.7110, 41.2547, 25.4306



8.3237, 8.6522, 8.4447



15.1928, 11.5910, 1.4365



0.4774, 0.4320, 0.0582

Inverse Universe

The Inverse Universe completely reimagines the original color for something new.



27.1014, 29.2670, 44.7782



44.4576, 48.1288, 79.5835



23.5293, 22.1228, 43.5875



7.8973, 8.3939, 10.1566



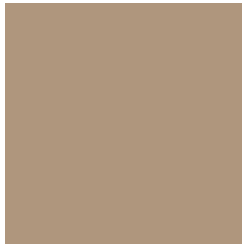
8.0720, 7.2778, 30.0238



0.2793, 0.3120, 0.8535

Previews

White Background



This preview shows how the XYZ color 32.2872, 32.4073, 23.9556 looks on a white background.

Color Contrast Check

Large Text (above 18pt) WCAG AA × Fail

Any Text WCAG AA × Fail

Large Text (above 18pt) WCAG AAA × Fail

Any Text WCAG AAA × Fail

Black Background



This preview shows how the XYZ color 32.2872, 32.4073, 23.9556 looks on a black background.

Color Contrast Check

Large Text (above 18pt) WCAG AA ✓ Pass

Any Text WCAG AA ✓ Pass

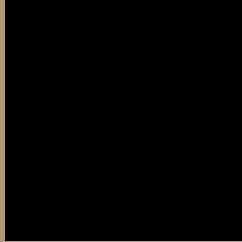
Large Text (above 18pt) WCAG AAA ✓ Pass

Any Text WCAG AAA ✓ Pass

If you want to check with other color combinations, try the [Color Contrast Checker](#).

XYZ 32.2872, 32.4073, 23.9556

Background



This preview shows how black text looks on a background with the XYZ color 32.2872, 32.4073, 23.9556.



This preview shows how white text looks on a background with the XYZ color 32.2872, 32.4073,

23.9556.

Color Blindness Simulation

Color vision deficiency is a very complex topic, and I could not describe the different causes any better than Wikipedia does, so if you want to learn more, you should check out their [article about color blindness](#).

Dichromacy



Original Color

32.2872, 32.4073, 23.9556

Protanopia

30.4906, 32.4300, 24.7313

Deuteranopia

32.8820, 32.2442, 23.8927



Tritanopia

34.9551, 32.5758, 36.3437

Trichromacy



Original Color

32.2872, 32.4073, 23.9556

Protanomaly

31.0935, 32.5043, 24.3738

Deuteranomaly

32.8092, 32.4405, 23.9345

Tritanomaly

33.9047, 32.3767, 31.2504

Monochromacy



Original Color

32.2872, 32.4073, 23.9556

Achromatopsia

31.1553, 32.7778, 35.6950

Achromatomaly

31.3256, 32.4775, 31.0033

CSS Examples

Text

The CSS property to change the color of the text to XYZ 32.2872, 32.4073, 23.9556 is called "color". The color property can be set on classes, ids or directly on the HTML element.

This example shows how text in the color `rgb(175, 150, 125)` looks like.

```
.text, #text, p{  
    color:rgb(175, 150, 125)  
}
```

If you want to add a text shadow in that color use the text-shadow property, you can generate a text shadow directly with our [CSS Text Shadow Generator](#).

Here you see how black text with a 4 pixel rgb(175, 150, 125) colored shadow looks like.

```
.shadow{ text-shadow: 4px 4px 2px rgb(175, 150, 125) }
```

Border

The CSS property to change the border of an element to XYZ 32.2872, 32.4073, 23.9556 is called "border". The border property can be set on classes, ids or directly on the HTML element.

This example shows the color as border, it can be applied via the CSS property "border" or "border-color".

```
.border, #border, table{ border:4px solid rgb(175, 150, 125) }
```


If only the border color should be changed use the property `border-color`.

```
.border{ border-color:rgb(175, 150, 125) }
```

If you want to add a box shadow in that color use:

Here you see how a box with a 4 pixel `rgb(175, 150, 125)` colored shadow looks like.

```
.boxshadow{ -moz-box-shadow:4px 4px 4px  
4px rgb(175, 150, 125); -webkit-box-  
shadow:4px 4px 4px 4px rgb(175, 150, 125);  
box-shadow:4px 4px 4px 4px rgb(175, 150,  
125) }
```

Background

The CSS property to change the background color of an element to XYZ 32.2872, 32.4073, 23.9556 is called "background". The background property can be set on classes, ids or directly on the HTML element.

```
.background, #background, body{  
background: rgb(175, 150, 125) }
```

If only the background color should be changed can be used:

```
.background{ background-color: rgb(175,  
150, 125) }
```

This example shows the color as background, it is applied via the CSS property "background".

To optimize and compress your CSS code, you can use our [online CSS compressor and optimizer](#) based on csstidy. If you want to create a linear or radial gradient as background or border, check our [CSS Gradient Generator](#).

Hey! You found this booklet interesting? Support Converting Colors with the new Membership Option!

The pro membership hides all ads, plus gives you double the colors in the color bucket, and more awesome pro features!

[Learn more, Memberships starting at \\$2.50/m!](#)

**Follow me
on Twitter!**

@ConvertingColor