

Converting Colors

XYZ(32.3399, 31.4413, 25.1590)

Have a look what the booklet for
XYZ(32.3399, 31.4413, 25.1590)
contains.

XYZ(32.3728, 31.4899, 25.1408)	3
<i>Conversions</i>	4
<i>Details</i>	6
<i>Harmonies</i>	12
<i>Previews</i>	24
<i>Color Blindness Simulation</i>	28
<i>CSS Examples</i>	31

Color

**XYZ(32.3728, 31.4899,
25.1408)**

Conversions

Conversions Part 1

Format	Color
Hex	B19281
RGB	177, 146, 129
RGB Percent	69%, 57%, 51%
CMY	0.3059, 0.4274, 0.4941
CMYK	0.00, 0.18, 0.27, 0.31
HSL	21°, 24%, 60%
HSV	21°, 27%, 69%
XYZ	32.3728, 31.4899, 25.1408
YIQ	153.3310, 23.9330, 1.2850

Conversions

Conversions Part 2

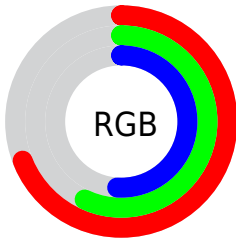
Format	Color
RYB	177, 155, 129
Decimal	11637377
CIELab	62.92, 9.01, 13.37
CIElCh	63, 16.124, 56.015
Yxy	31.4899, 0.3637, 0.3538
Android (android.graphics.Color)	4289827457 (0xFFB19281)
YUV	153.3310, -11.9952, 20.7577
Hunter-Lab	56.1159, 4.7725, 12.7182

Details

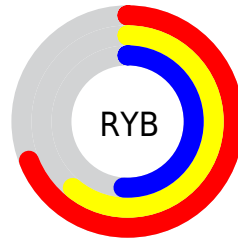
The XYZ color **32.3728, 31.4899, 25.1408** is a light color, and the websafe version is hex **CC9999**. A complement of this color would be **29.5595, 32.9820, 46.4033**, and the grayscale version is **30.4666, 32.0532, 34.9059**.

A 20% lighter version of the original color is **62.7020, 62.0096, 52.9203**, and **13.8524, 13.0487, 9.3780** is the 20% darker color. If you saturate the color by 10%, you get **29.6221, 27.7110, 18.9135**, and if you desaturate by 10%, it is **35.5052, 35.7056, 32.5015**.

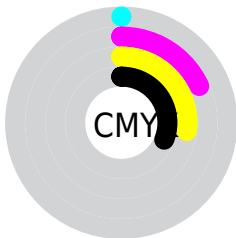
Distribution



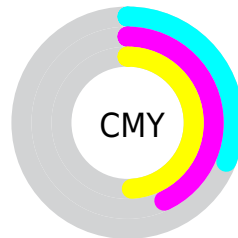
- Red (69%)
- Green (57%)
- Blue (51%)



- Red (69%)
- Yellow (61%)
- Blue (51%)



- Cyan (0%)
- Magenta (18%)
- Yellow (27%)
- Black (31%)



- Cyan (31%)
- Magenta (43%)
- Yellow (49%)

Brightness & Saturation Gradients

These gradients show how the XYZ color 32.3728, 31.4899, 25.1408 changes by changing the brightness by 10 percent. The first figure shows a shift by +10% for each color and the second figure -10%.

Similar to the brightness gradients but the following saturation gradients show a change of the XYZ color 32.3728, 31.4899, 25.1408 by changing the saturation by 10% instead.

■ 32.3728, 31.4899,
25.1408

■ 32.3728, 31.4899,
25.1408

304.5292,
308.7890, 292.0085

■ 21.8033, 20.9722,
15.9620

■ 62.7563, 62.0106,
52.8525

■ 13.8283, 13.1037,
9.3432

■ 83.3011, 82.7823,
72.2225

■ 8.0822, 7.5000,
4.8659

■ 107.9017,
107.7408, 95.8266

■ 4.1998, 3.7767,
2.1114

136.9234,
137.2705, 124.0835

■ 1.8158, 1.5494,
0.6225

170.7317,
171.7557, 157.4115

■ 0.5272, 0.3232,
0.0000

209.6918,

■ 0.0000, 0.0000,

211.5810, 196.2294

0.0000

254.1692,
257.1306, 240.9555

■ 32.3728, 31.4899,
25.1408

■ 32.3728, 31.4899,
25.1408

■ 29.6221, 27.7110,
18.9135

■ 35.5052, 35.7056,
32.5015

■ 27.2350, 24.3501,
13.7607

■ 39.0314, 40.3675,
41.0468

■ 25.1954, 21.3931,
9.6208

■ 42.9662, 45.4902,
50.8268

■ 23.4849, 18.8238,
6.4254

■ 47.3227, 51.0862,
61.8883

■ 22.0834, 16.6245,
4.0974

■ 52.1135, 57.1676,
74.2758

■ 20.9679, 14.7757,
2.5471

■ 57.3506, 63.7461,
88.0313

■ 20.1074, 13.2542,
1.6450

■ 63.0455, 70.8328,
103.1953

■ 19.8925, 12.8692,
1.4356

■ 66.5942, 77.3926,
106.0361

■ 70.0180, 84.2402,
107.1774

Harmonies

Analogous

The Analogous color harmony consists of three colors that are next to each other on the color wheel.



33.9202, 31.4899, 29.2140



32.3728, 31.4899, 25.1408



30.2269, 31.4899, 23.5084

Triad

The Triadic color harmony groups three colors that are evenly spaced from another and form a triangle on the color wheel.



32.3728, 31.4899, 25.1408



25.8821, 31.4899, 33.4471



31.8360, 31.4899, 46.4490

Complementary

The Complementary color scheme is a pair of colors which are on the opposite of each other on the color wheel.



32.3728, 31.4899, 25.1408



29.5595, 32.9820, 46.4033

Split Complementary

Split-complementary colors differ from the complementary color scheme. The scheme consists of three colors, the original color and two neighbors of the complement color.



29.6354, 31.4899, 47.9407



32.3728, 31.4899, 25.1408



26.2660, 31.4899, 39.9160

Square

The Square scheme is like the rectangle color scheme, but the four colors are evenly spaced on the color wheel.



32.3728, 31.4899, 25.1408



26.5381, 31.4899, 27.9152



27.6137, 31.4899, 45.4197



33.5998, 31.4899, 41.5617

Rectangle

The Rectangle color scheme consists of four colors that form a rectangle on the color wheel.



32.3728, 31.4899, 25.1408



28.7713, 31.4899, 23.8550



27.6137, 31.4899, 45.4197



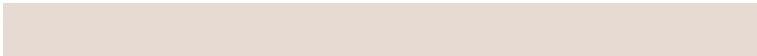
31.1198, 31.4899, 47.3881

Sweetspot

The Sweet Spot groups the original color and five complimentary colors.



32.3736, 31.4913, 25.1414



69.2275, 71.4089, 71.8547



32.3446, 27.5930, 36.9710



14.7926, 15.1991, 15.0585



84.5950, 89.0005, 96.9216



16.2198, 17.0645, 18.5832

Same Dimension

The Same Dimension uses a secret algorithm to generate beautiful new colors.



32.3736, 31.4913, 25.1414



54.7275, 51.9485, 37.6119



36.4314, 39.6068, 26.4940



8.7345, 8.9815, 8.9258



14.4654, 9.4293, 1.0576



0.5114, 0.4092, 0.0520

Inverse Universe

The Inverse Universe completely reimagines the original color for something new.



29.5595, 32.9820, 46.4033



48.7729, 55.0888, 82.5579



25.8218, 25.5065, 45.1574



8.4843, 9.1148, 10.8185



10.1927, 11.1858, 31.7589



0.3732, 0.4569, 1.0168

Previews

White Background



This preview shows how the XYZ color 32.3728, 31.4899, 25.1408 looks on a white background.

Color Contrast Check

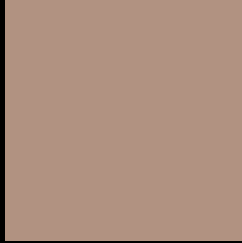
Large Text (above 18pt) WCAG AA × Fail

Any Text WCAG AA × Fail

Large Text (above 18pt) WCAG AAA × Fail

Any Text WCAG AAA × Fail

Black Background



This preview shows how the XYZ color 32.3728, 31.4899, 25.1408 looks on a black background.

Color Contrast Check

Large Text (above 18pt) WCAG AA ✓ Pass

Any Text WCAG AA ✓ Pass

Large Text (above 18pt) WCAG AAA ✓ Pass

Any Text WCAG AAA ✓ Pass

If you want to check with other color combinations, try the [Color Contrast Checker](#).

XYZ 32.3728, 31.4899, 25.1408

Background



This preview shows how black text looks on a background with the XYZ color 32.3728, 31.4899, 25.1408.



This preview shows how white text looks on a background with the XYZ color 32.3728, 31.4899,

25.1408.

Color Blindness Simulation

Color vision deficiency is a very complex topic, and I could not describe the different causes any better than Wikipedia does, so if you want to learn more, you should check out their [article about color blindness](#).

Dichromacy



Original Color

32.3728, 31.4899, 25.1408

Protanopia

29.8903, 31.5960, 26.3530

Deuteranopia

32.0754, 31.5664, 25.1712



Tritanopia

34.3281, 31.3824, 34.8200

Trichromacy



Original Color

32.3728, 31.4899, 25.1408

Protanomaly

30.7290, 31.5584, 25.9445

Deuteranomaly

32.3007, 31.6825, 25.1818

Tritanomaly

33.5237, 31.2730, 31.0575

Monochromacy



Original Color

32.3728, 31.4899, 25.1408

Achromatopsia

30.2779, 31.8547, 34.6897

Achromatomaly

30.8407, 31.5077, 30.8417

CSS Examples

Text

The CSS property to change the color of the text to XYZ 32.3728, 31.4899, 25.1408 is called "color". The color property can be set on classes, ids or directly on the HTML element.

This example shows how text in the color `rgb(177, 146, 129)` looks like.

```
.text, #text, p{  
    color:rgb(177, 146, 129)  
}
```

If you want to add a text shadow in that color use the text-shadow property, you can generate a text shadow directly with our [CSS Text Shadow Generator](#).

Here you see how black text with a 4 pixel rgb(177, 146, 129) colored shadow looks like.

```
.shadow{ text-shadow: 4px 4px 2px rgb(177, 146, 129) }
```

Border

The CSS property to change the border of an element to XYZ 32.3728, 31.4899, 25.1408 is called "border". The border property can be set on classes, ids or directly on the HTML element.

This example shows the color as border, it can be applied via the CSS property "border" or "border-color".

```
.border, #border, table{ border:4px solid rgb(177, 146, 129) }
```


If only the border color should be changed use the property `border-color`.

```
.border{ border-color:rgb(177, 146, 129) }
```

If you want to add a box shadow in that color use:

Here you see how a box with a 4 pixel `rgb(177, 146, 129)` colored shadow looks like.

```
.boxshadow{ -moz-box-shadow:4px 4px 4px  
4px rgb(177, 146, 129); -webkit-box-  
shadow:4px 4px 4px 4px rgb(177, 146, 129);  
box-shadow:4px 4px 4px 4px rgb(177, 146,  
129) }
```

Background

The CSS property to change the background color of an element to XYZ 32.3728, 31.4899, 25.1408 is called "background". The background property can be set on classes, ids or directly on the HTML element.

```
.background, #background, body{  
background: rgb(177, 146, 129) }
```

If only the background color should be changed can be used:

```
.background{ background-color: rgb(177,  
146, 129) }
```

This example shows the color as background, it is applied via the CSS property "background".

To optimize and compress your CSS code, you can use our [online CSS compressor and optimizer](#) based on csstidy. If you want to create a linear or radial gradient as background or border, check our [CSS Gradient Generator](#).

Hey! You found this booklet interesting? Support Converting Colors with the new Membership Option!

The pro membership hides all ads, plus gives you double the colors in the color bucket, and more awesome pro features!

[Learn more, Memberships starting at \\$2.50/m!](#)

**Follow me
on Twitter!**

@ConvertingColor